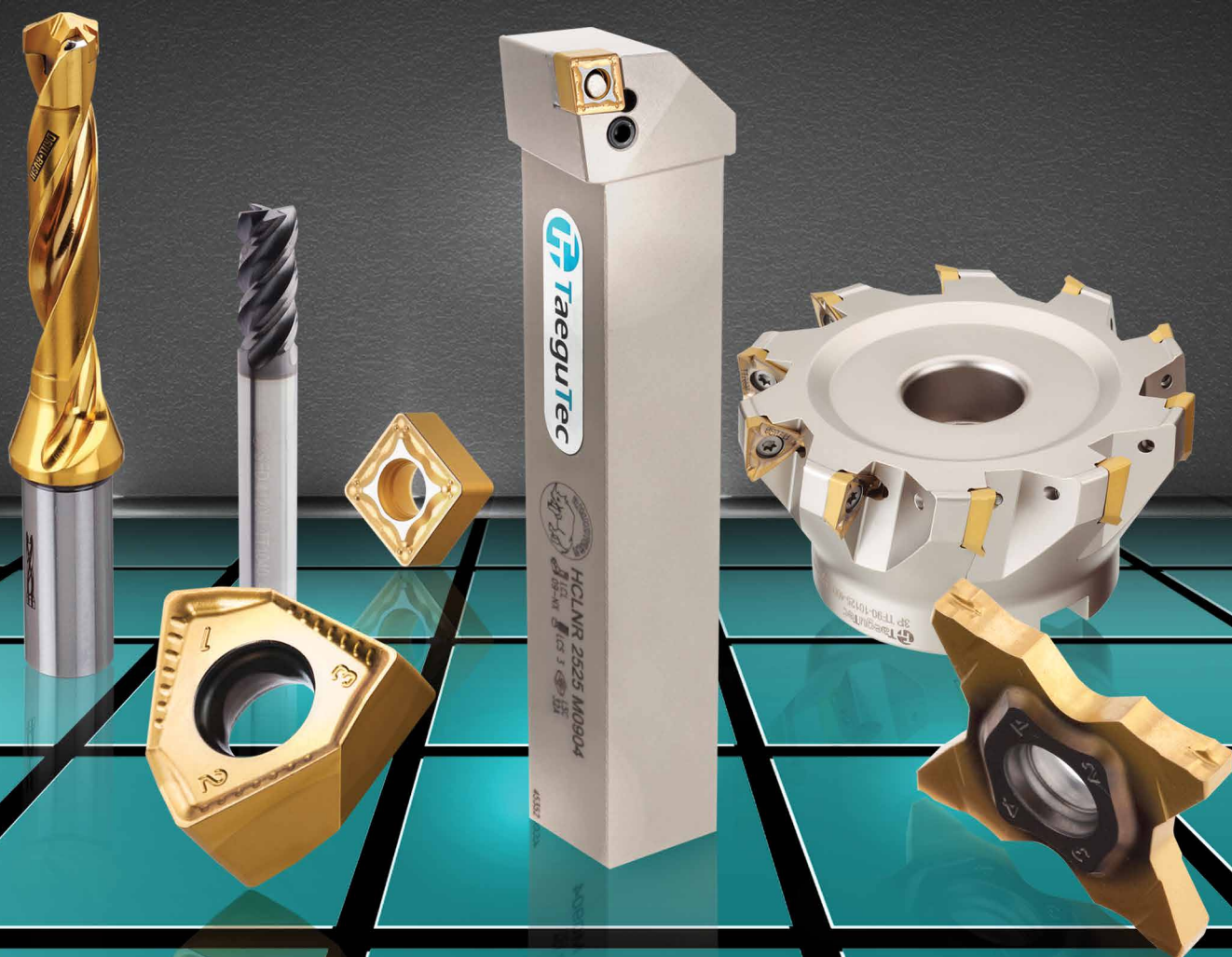


# FOCUS

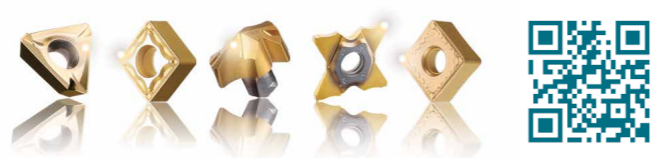
## PRODUCTS



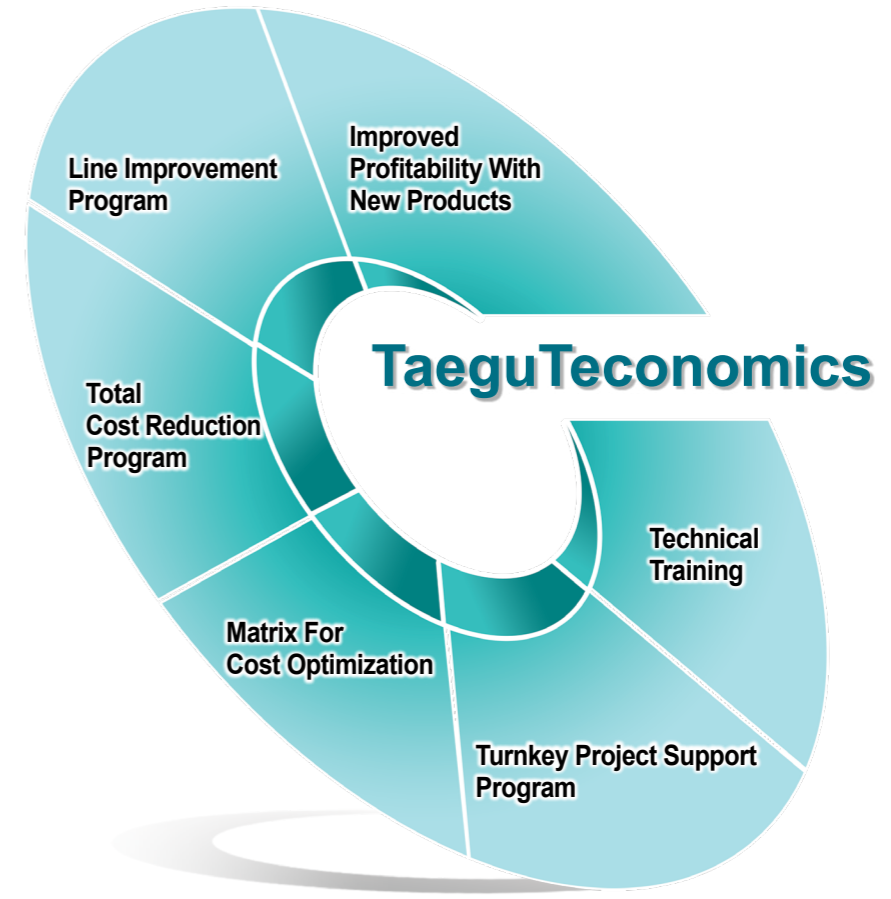


You don't need a strategic guru to win the game.  
We do the winning moves for you.

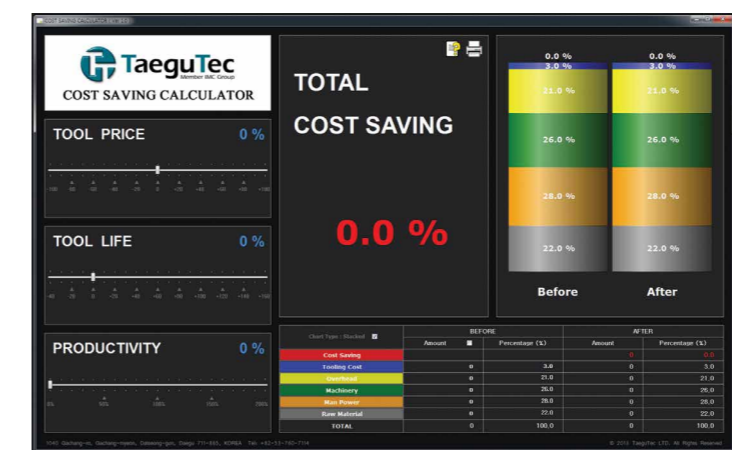
# TaeguTeconomics, by all means!



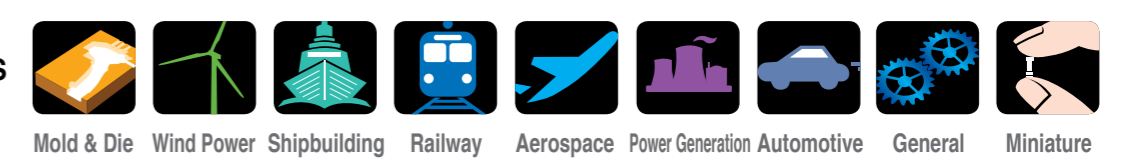
# TaeguTeconomics



TaeguTeconomics is a fully integrated philosophy that incorporates profitability, increased productivity and expert knowhow in order for TaeguTec customers to stay ahead of the competition.



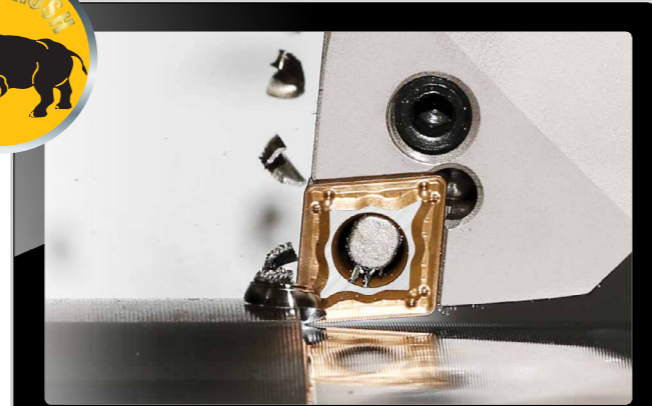
INDUSTRIAL APPLICATIONS



# RHINO•RUSH

## Smaller and stronger

- New small & strong mini size insert for general applications
- Optimal performance in interrupted cutting on weak or old machine set-ups



INDUSTRIAL APPLICATIONS

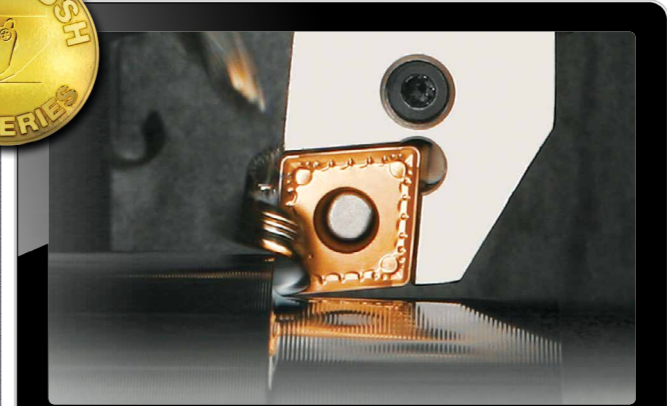


# TURN•RUSH

## HB chip breaker

### For semi heavy machining

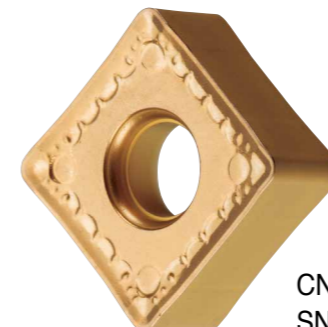
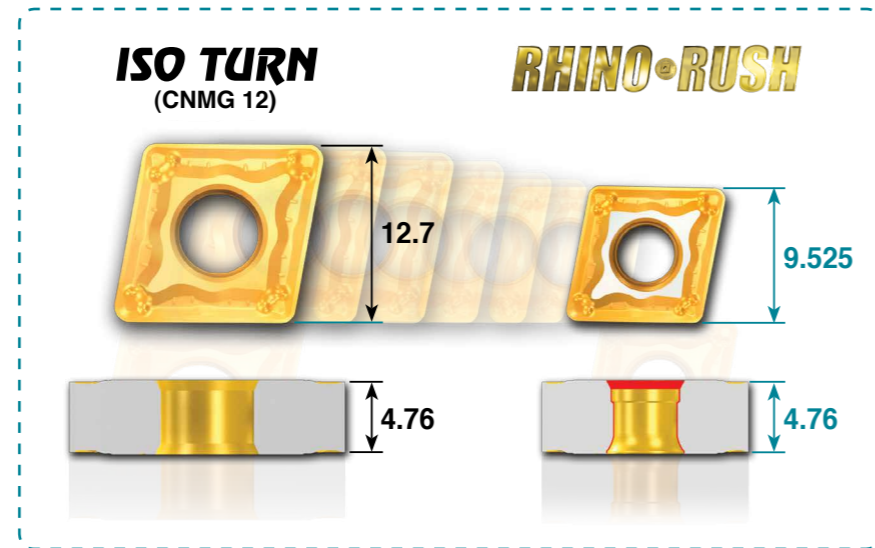
- 3 dimensional geometry that is exchangeable with the ISO standard holder
- New hooked lever design increases clamping forces and enhances insert seating stability to improve tool life
- Double sided insert



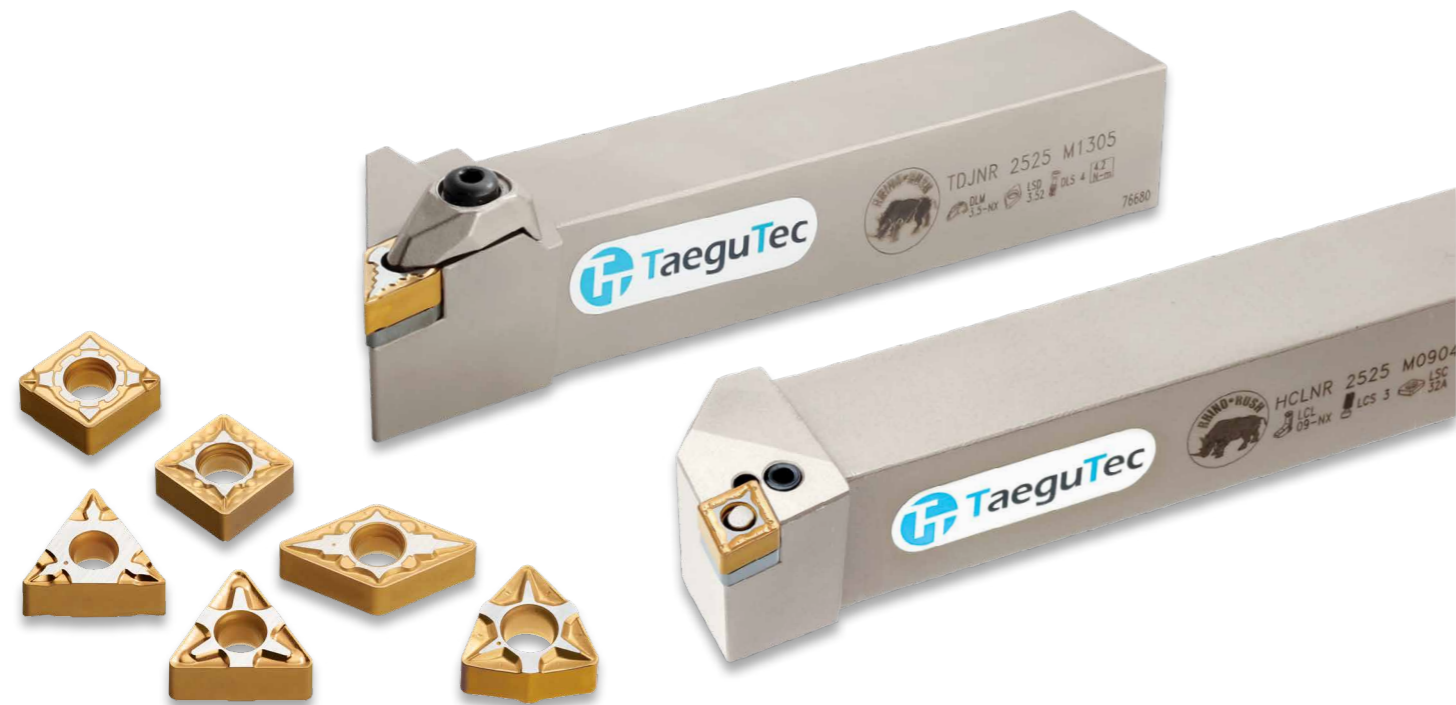
INDUSTRIAL APPLICATIONS



SIZE TECHNOLOGY



CNMX 16, 12  
SNMX 15



# T-BURST

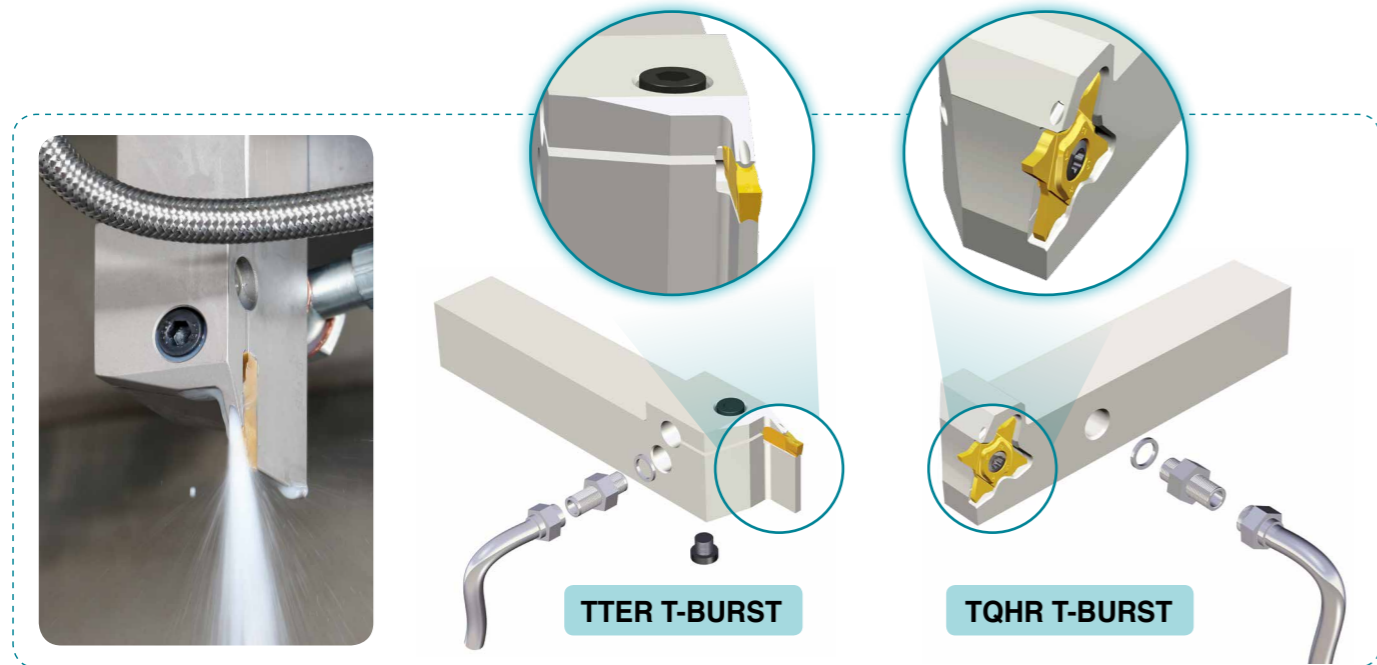
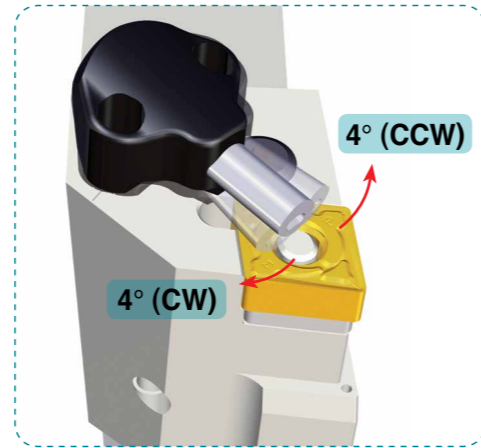
HIGH PRESSURE

## High pressure coolant tool for difficult-to-cut materials

- Excellent chip control on problematic materials
- Increased tool life when machining titanium, other heat resistant alloys
- Very effective cooling down of the cutting edge



INDUSTRIAL APPLICATIONS



# COMBICLAMP

## Multi clamp ISO turning holder

- Applicable to the existing T-Holders when the clamp is changed
- Versatility: 3 different types of insert available for one T-Holder



INDUSTRIAL APPLICATIONS



Carbide pressing plate



# TOPDUTY

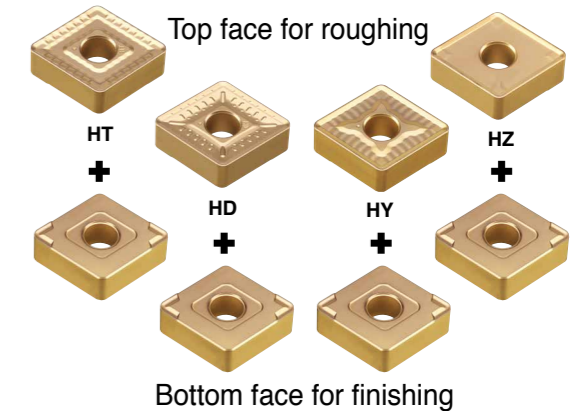
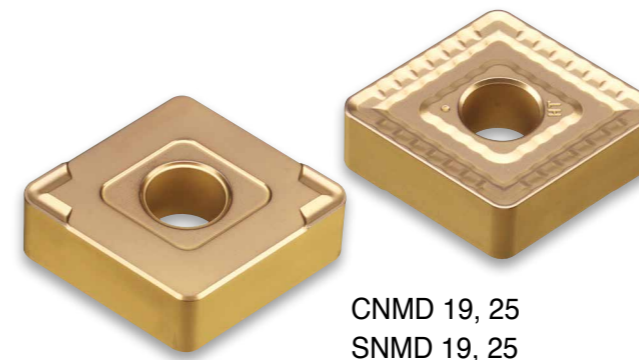
## New double-sided chip breaker insert for rough and finish machining

### Double sided H series chip breaker

- Both sides of insert can be used to improve cost reductions and reduce inventory
- Economy is further improved by using one tool holder for rough to finish machining



INDUSTRIAL APPLICATIONS

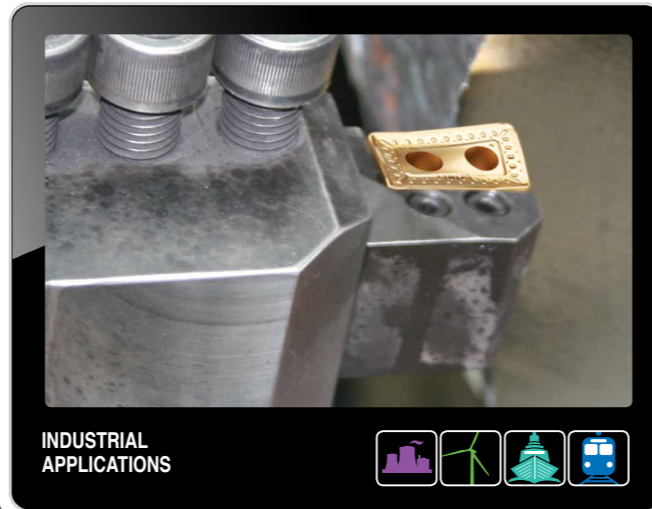


# TOPDUTY

For large part machining in the wind power, shipbuilding and power plant industries

## 40mm helix cutting edge

- Double lever clamping for maximum clamping stability
- Unique geometry generates low cutting forces
- Facing and external turning possible with right & left hand insert types

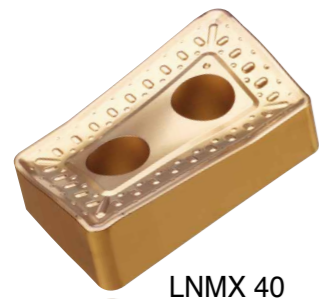
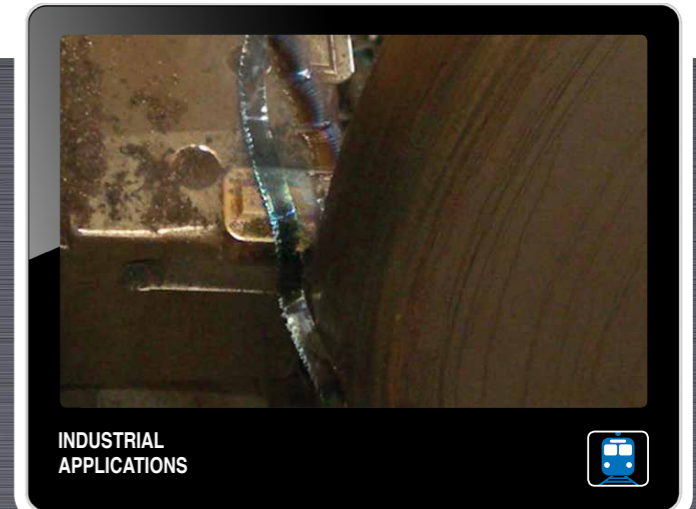


# TOPRAIL

For turning rail wheels

## Best solution for rail wheel profiling

- Economical and productive performance is based on individual insert cutting conditions (roughing, semi-finishing and finishing)



# TOPDUTY

For large part machining in the wind power, shipbuilding and power plant industries

## 50mm cutting edge

- 50mm cutting edge enables cutting up to 45mm depth of cut
- The HD insert is suitable for continuous machining and the HY insert is for interrupted operations
- With two blind holes and two clamp lever system

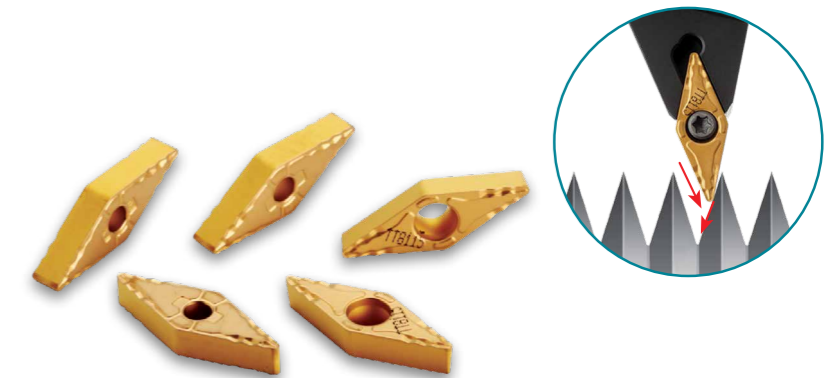
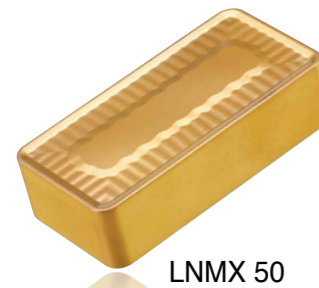
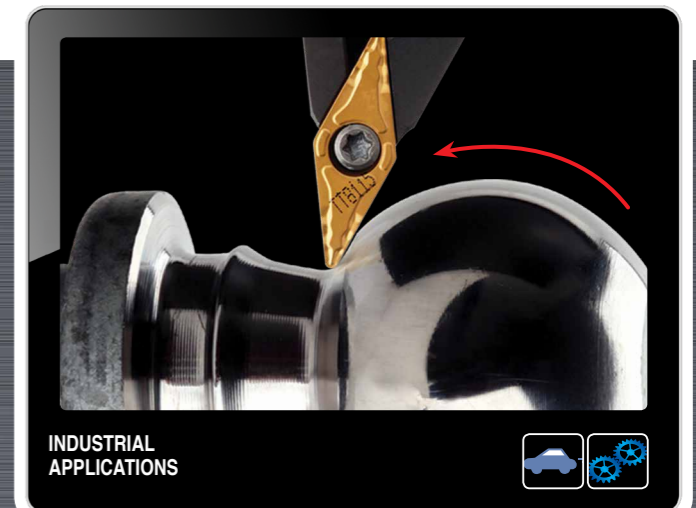


# T-TURN

## FX chip breaker

Good chip control on mild steels

- Narrow chip breaker design for optimal chip control
- Helix geometry design and high positive cutting edge for low cutting force
- Wave cutting edge design ensures chip control on pulley and ball stud machining

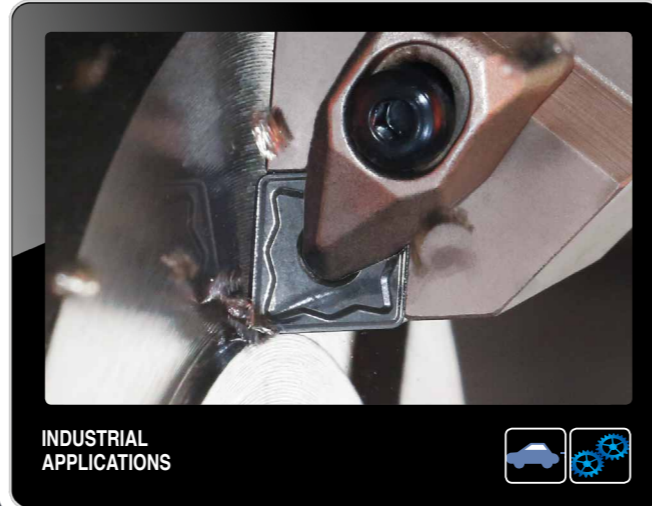


# T-TURN

## KT chip breaker

For machining of cast iron in roughing

- General machining for cast iron
- Stable broad supporting area
- Excellent tool-life for roughing and interrupted cutting conditions

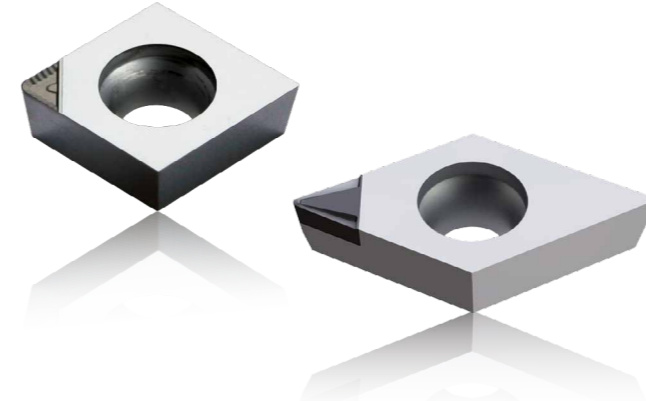
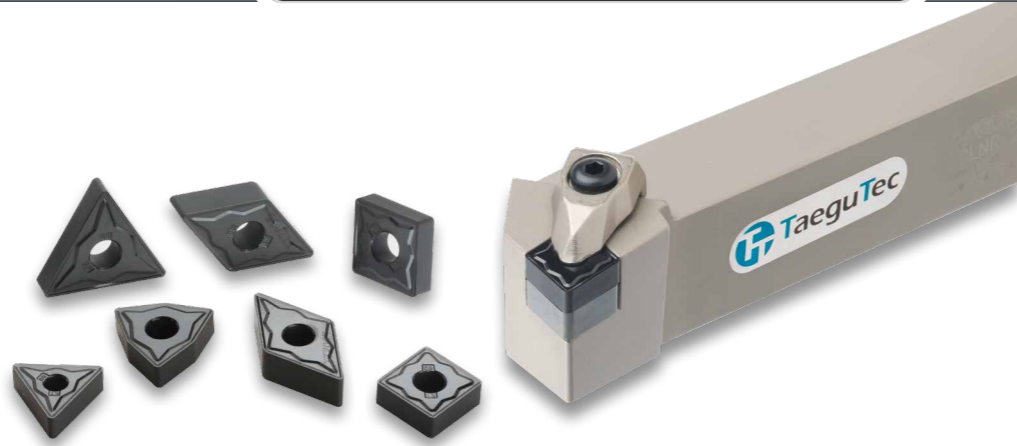
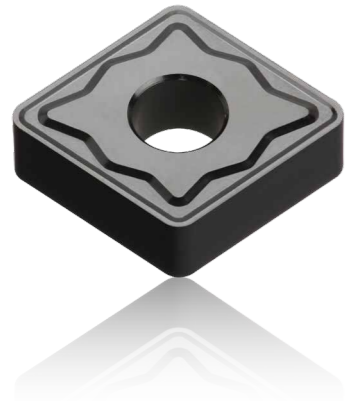


# T-TURN

## CB - PCD chip breaker insert

CB - geometricized PCD insert

- Serrated cutting edge ensures maximum chip control and low cutting resistance that performs remarkably well even at low depths of cut and low feed rates

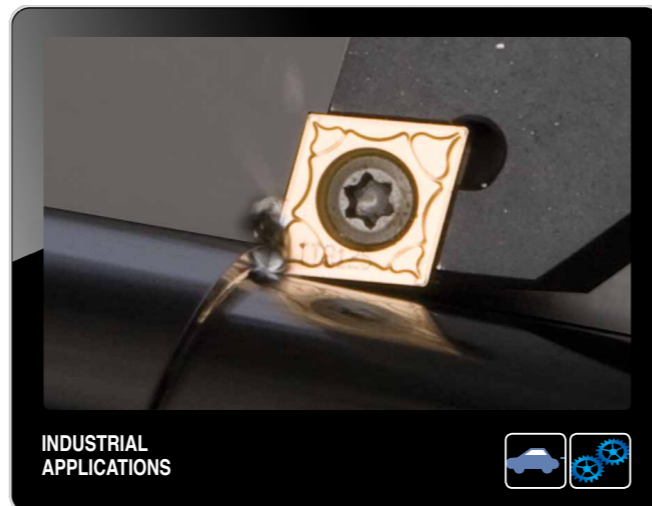


# T-TURN

## PC positive chip breaker

New single sided 'PC' chip breaker issued to semi-finish and medium machining

- Low cutting forces credit to its positive rake angle
- Wide application range
- Suitable for a wide variety of materials
- For semi-finish to medium machining applications

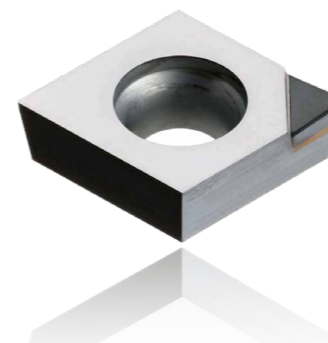
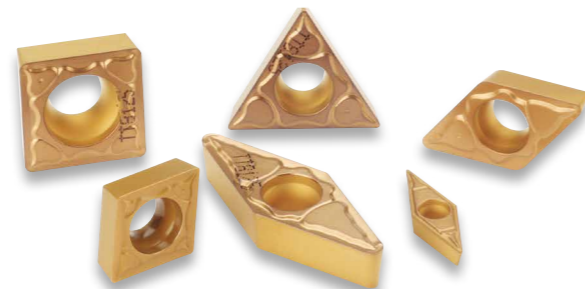


# T-TURN

## TD810 PCD grade

A new high productivity PCD grade for aluminum & non-ferrous materials machining

- The PCD grade's complex structure provides the optimal combination of strong wear resistance and superior toughness
- Achieves excellent surface finish

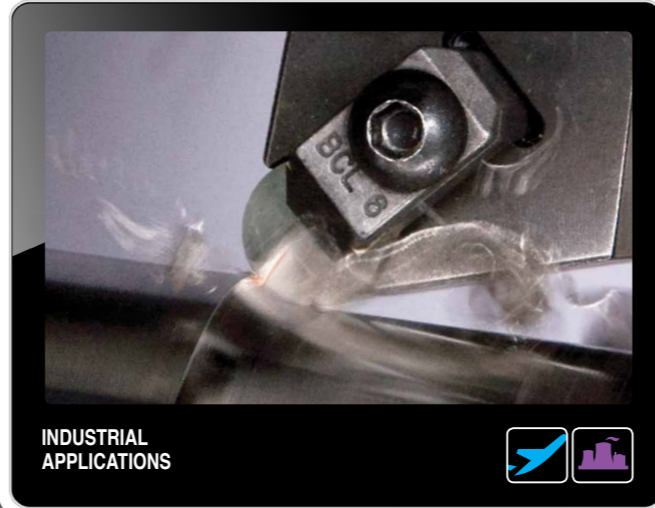


# T-TURN

## TC430 - whisker reinforced ceramic grade

For machining high strength and high temperature alloy materials

- Suitable for general turning and milling applications
- Possible to conduct high speed cutting on Ni-base superalloys (Inconel, Waspaloy, Rene, etc.)

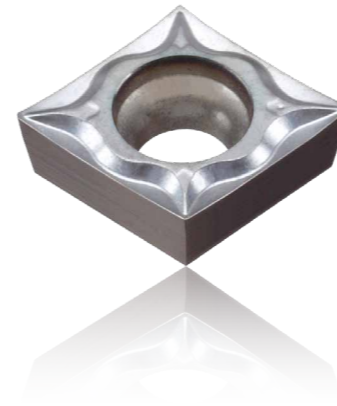
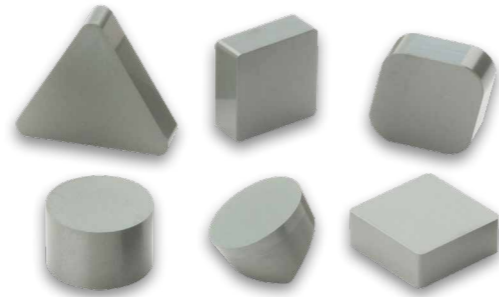
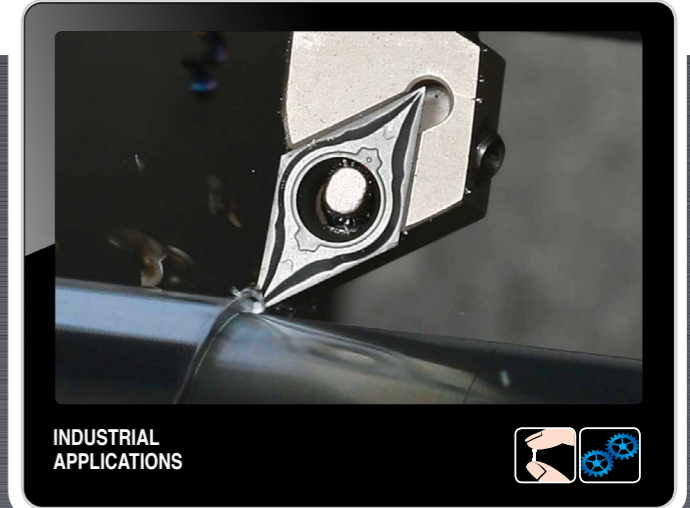


# TOPMINI

## SA chip breaker

Ground positive ISO inserts for high precision turning

- Low cutting forces due to the dynamically inclined sharp cutting edge with a wide groove geometry
- Excellent chip control at low feed rates and depths of cut, credit to an optimised corner chip breaker design
- Small corner radius size: R0.1, 0.2 and 0.4mm



# T-TURN

## TB610, TB670, TB730 CBN grade

Excellent cutting performance for hardened steel and cast iron



## Back clamping holder

Quick change holders for swiss type inserts

- Quick insert changeover with simple lever clamp design
- Both front and side clamping is available

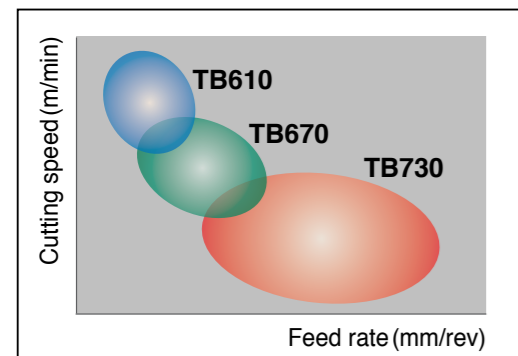
## Boring bars and inserts for small component machining

New range of inserts and boring bars suitable for the turning of small workpieces

- Micro size inserts (IC=3.97, 4.76mm)



### Application Range

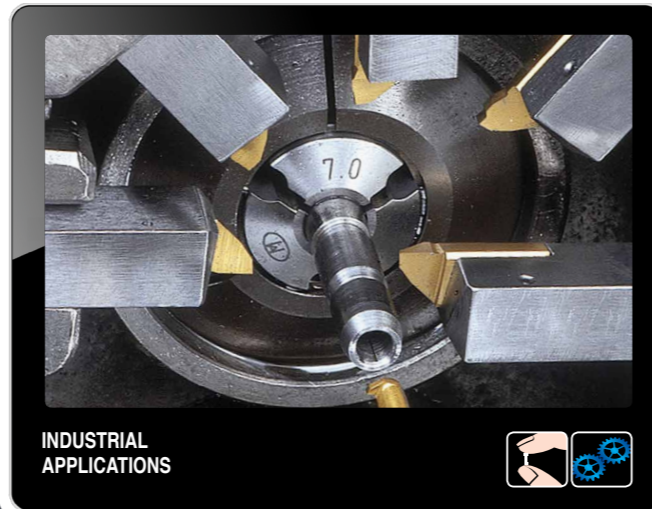


# TOPCUT

Compact turning tools for swiss-type CNC lathes

Turning, back turning, reverse turning, threading, parting & grooving

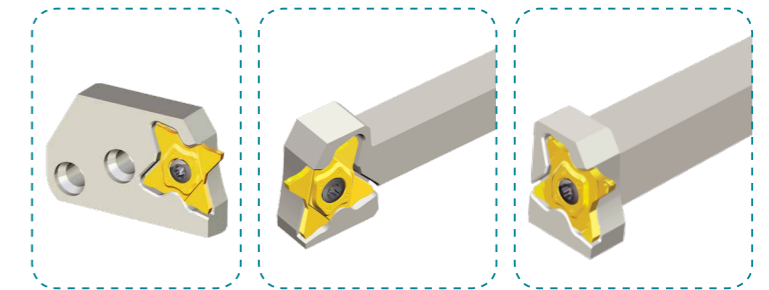
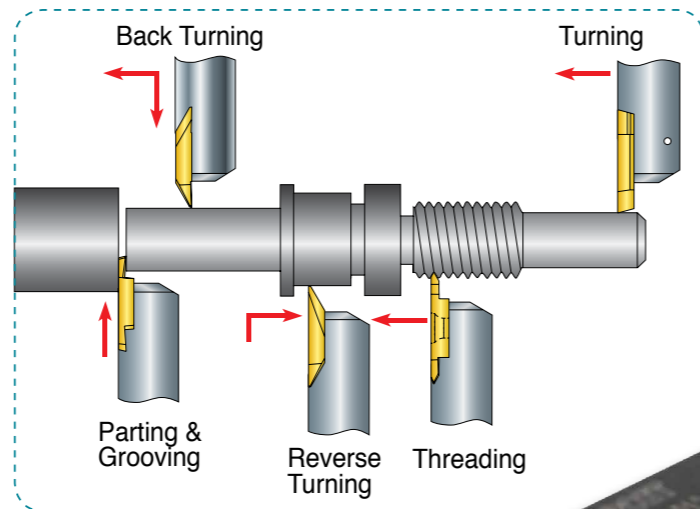
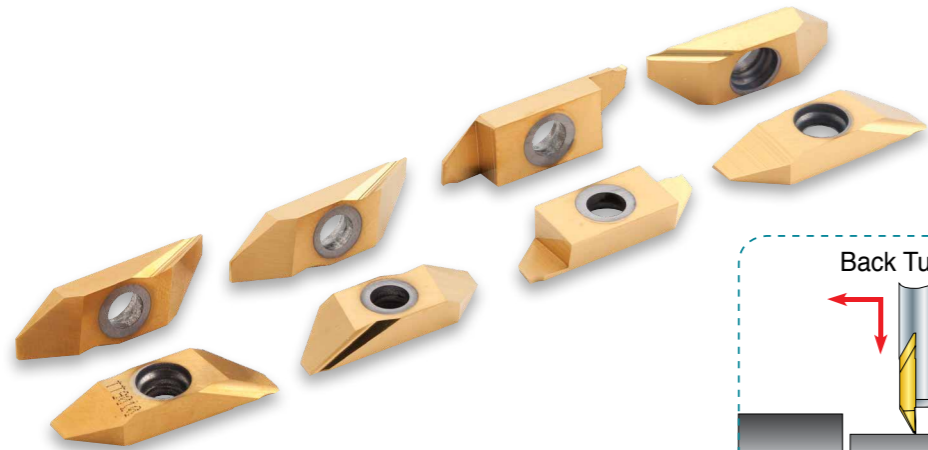
- Excellent surface finish and repeatability credit to high precision ground inserts
- Ultra fine, ground cutting edge prevents micro-chipping and promotes longer tool life



# QUAD-RUSH

4 cutting edges with chip breaker for grooving, parting and recessing

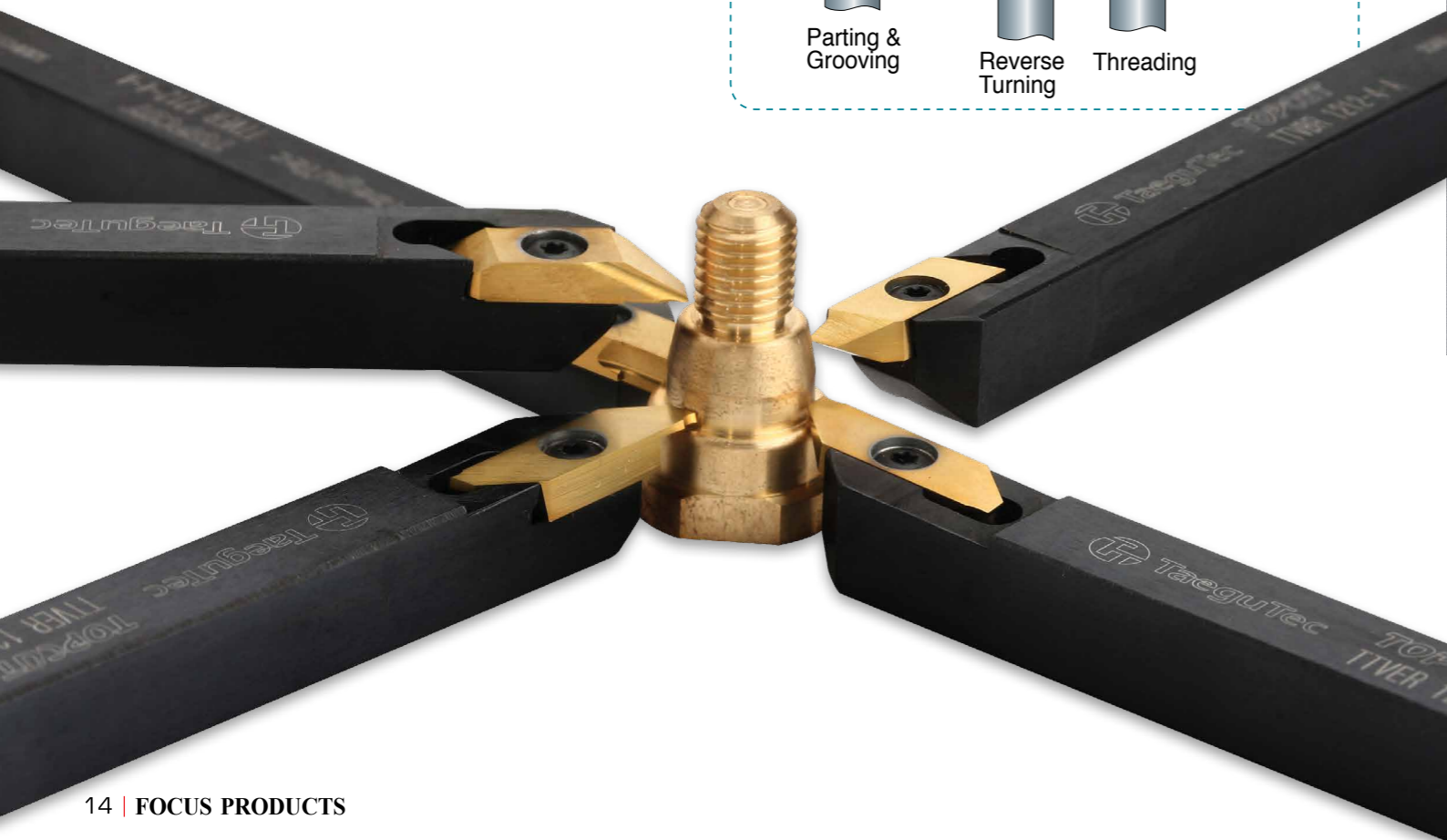
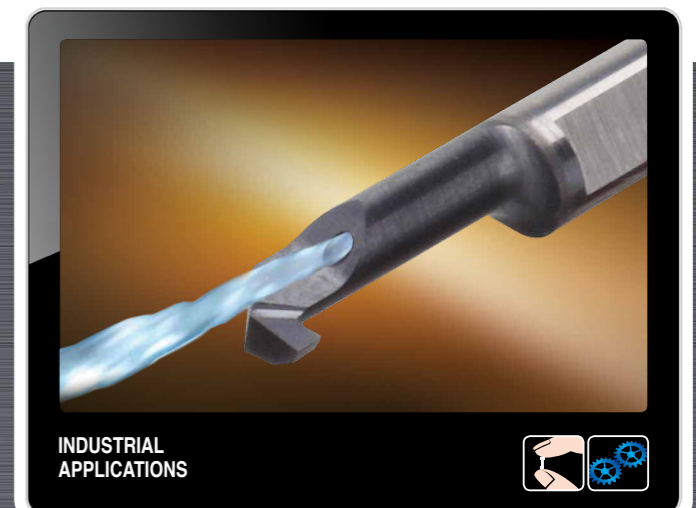
- 4 cutting edges with J, C, and S type chip breaker
- TQJ and TQC are for excellent chip control and high quality surface finish grooving
- TQS is for various widths and special insert geometries



# TOPMICRO

Internal turning, back turning, profiling, grooving, chamfering and face machining of small diameters

- Internal coolant through the body
- Best solution for internal turning, back turning, profiling, grooving, chamfering and face machining especially on small diameters





# DRILL•RUSH

## New head-changeable drill

- Quick change system - Head indexing on the machine
- Flexibility - One drill body for a series of different sized head
- Twisted coolant channel & polished chip gullet
  - Smooth & excellent chip evacuation
- Rigid connection - Remarkable performance and maximum number of head indexing
- New multi-layered coating grade(TT9080) - Prolong tool life



INDUSTRIAL APPLICATIONS



**Range**

- Diameter : Ø6.0mm - Ø25.9mm
- Holder : 1.5xD, 3xD, 5xD, 8xD, 12xD

# DRILL•RUSH

## DRILLRUSH for pre - thread drilling

- Cost effective solution
  - Replacing the high cost solid carbide drills
- Optimal performance via balanced cutting
  - Double effective design
- Available for both chamfering and counter boring
  - Both blind & through-hole applications



INDUSTRIAL APPLICATIONS



**Range**

- Pre-thread hole: M8 - M24

# DRILL•RUSH

## DRILLRUSH for adjustable chamfering

- Drill & chamfer in a single operation
  - Minimized machining time & improved economy
- Adjustable step length
- High cutting condition in productivity
  - Two standard chamfering inserts



INDUSTRIAL APPLICATIONS



**Range**

- Diameter: Ø10mm - Ø25mm

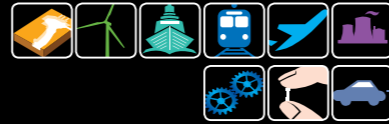
# TOPDRILL

## New generation of indexable drill

- Remarkable machinability with high stability
- Twisted coolant channels
  - Improved chip evacuation and hole quality
- Applicable to a variety of materials
- Enhanced insert durability with new grade (TT9080)
- One insert for both internal and external pockets



INDUSTRIAL APPLICATIONS



### Range

- Diameter : Ø14.0mm - Ø50.0mm
- Holder : 2xD, 3xD, 4xD, 5xD



# TOPCAP

## Multi-functional new TOPCAP

- Drilling, turning and grooving
- Unique design of new grooving insert
  - Two cutting edges
- Same holder for both grooving & turning inserts
- New pocket design - Protect the opposite cutting edge
- Internal coolant system



INDUSTRIAL APPLICATIONS



### Range

- Diameter : Ø8.0mm - Ø32.0mm
- Holder : 2.25xD, 3xD



# T-DEEP

## Deep hole drilling for conventional horizontal machining centres or lathes

- New optimum solution for drilling over 5xD
  - From diameter 30mm to 69mm
- Direct mounting system
- Cost saving with indexable inserts
- Good quality of holes with smooth chip evacuation
  - Wide chip gullet design



INDUSTRIAL APPLICATIONS



# TM-REAM

## Head changeable reamer for high speed reaming

- Quick change system - No set up time
- High speed & feed rate for maximum productivity
- High accuracy - Maximum run-out 3µm
- Highly economy - One shank for a wide range of diameters & types of cutting edge
- Internal coolant directed to the cutting edges
- Prolonged tool life



INDUSTRIAL APPLICATIONS



### Range

- Diameter : Ø11.5mm - Ø32.0mm
- Holder : 3xD, 5xD, 8xD
- Head type : Straight & Left-handed flute

# TB-REAM

## Single edged reamer for high speed reaming

- Two cutting edges for improved economy
- Optimal internal coolant supply system according to hole type
- Available for interrupted applications
- Extreme surface finishing and cylindricity for IT6 hole tolerance



INDUSTRIAL APPLICATIONS



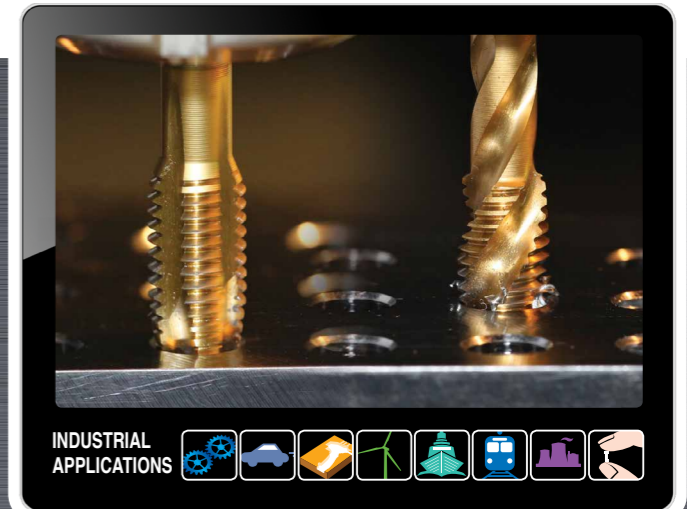
### Range

- Diameter : Ø8.0mm - Ø32.0mm
- Holder : Blind hole & Through hole

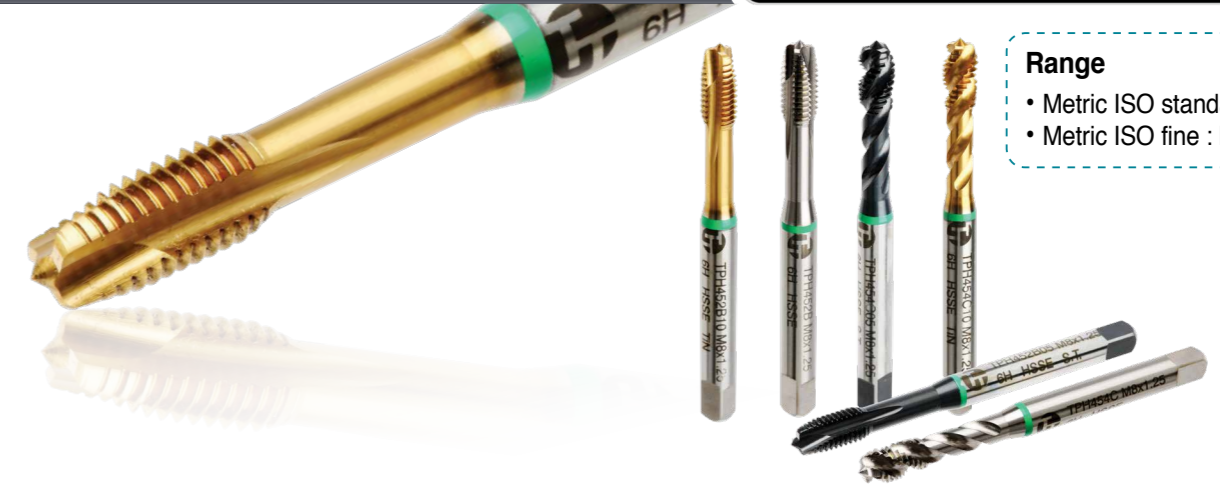
# T-TAP

## TaeguTec multi purpose taps

- Premium high speed steel with cobalt for increased wear and heat resistance
- Universal application for a wide range of materials
- 2 different flute geometries for through and blind-hole applications



INDUSTRIAL APPLICATIONS



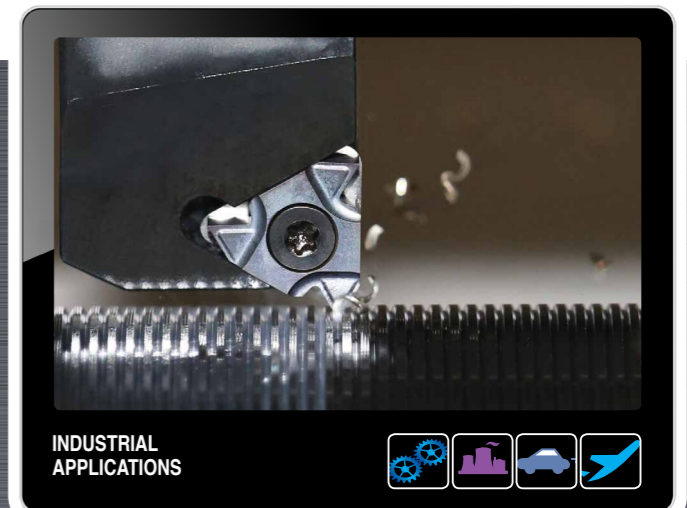
### Range

- Metric ISO standard : M2 - M20
- Metric ISO fine : M8 - M16

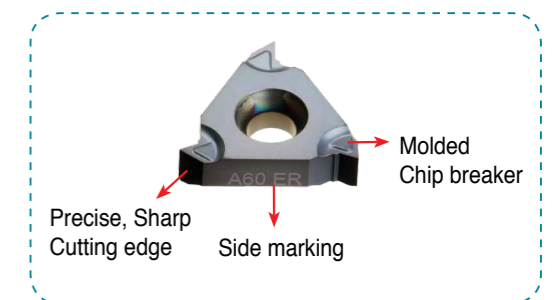
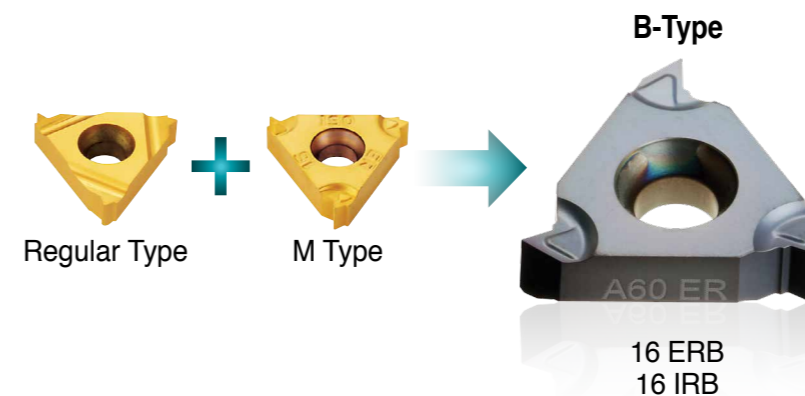
# T-THREAD

## New B-Type threading inserts

- Molded chip breaker with sharp cutting edges lower cutting force
- Solution for stainless steels, high temperature alloys and mild steel
- Improved chip breaking and better chip evacuation



INDUSTRIAL APPLICATIONS



# MILL RUSH

## Super high positive insert with 3 cutting edges

- Thick & unique geometry for high strength cutting
- Super high positive axial rake that generates low cutting forces
- Innovative cutting edge for effective chip evacuation



INDUSTRIAL APPLICATIONS



# MILL RUSH

## Double sided positive insert with 6 cutting edges

- Thick & unique geometry for high strength cutting
- Wide wiper flat gives exceptional surface finishes
- Positive axial rake angle that generates low cutting forces and delivers smooth cutting
- Ground periphery inserts for high precision machining

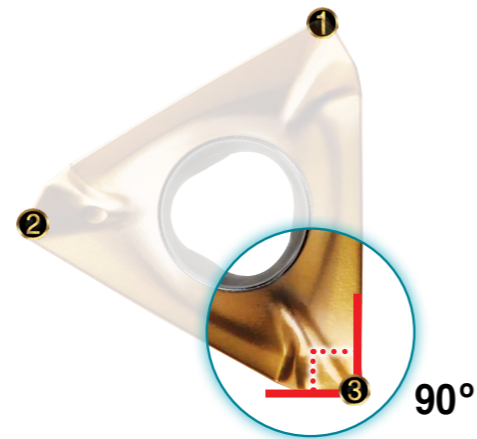


INDUSTRIAL APPLICATIONS



### Cutter Range

- Face mill : Ø32mm - Ø250mm
- End mill : Ø12mm - Ø40mm
- Modular type : Ø16mm - Ø40mm

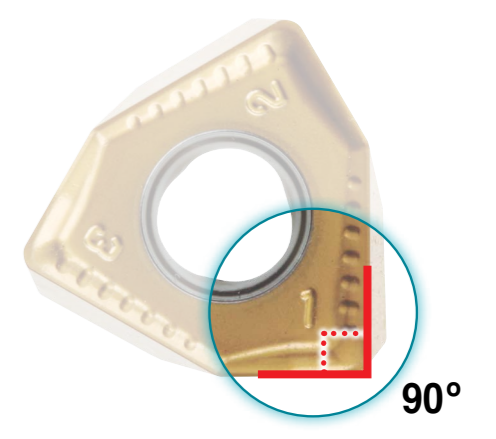


Total solution for shoulder milling with 90 degree, 3 corner high positive rake angle inserts

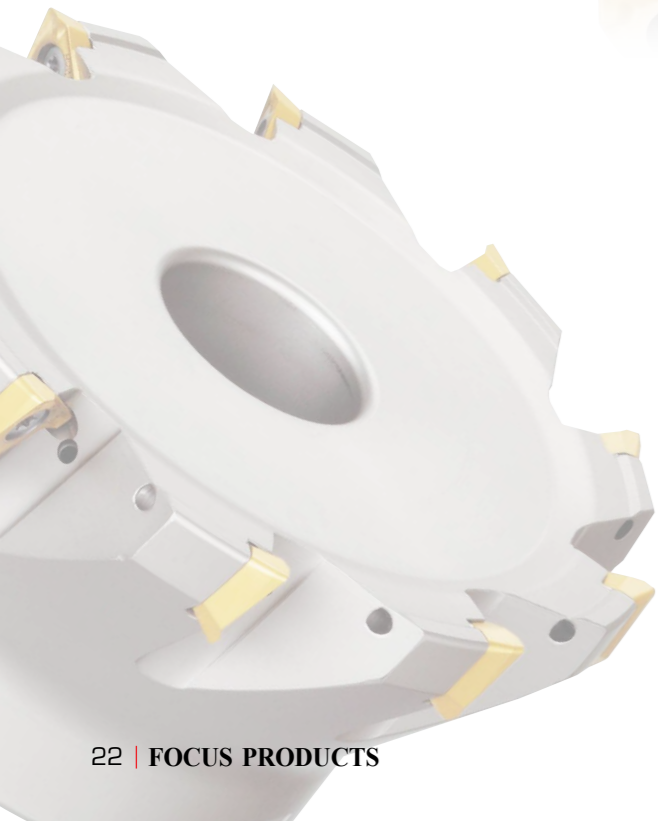


### Cutter Range

- Face mill : Ø40mm - Ø250mm
- End mill : Ø25mm - Ø40mm
- Modular type : Ø25mm - Ø40mm



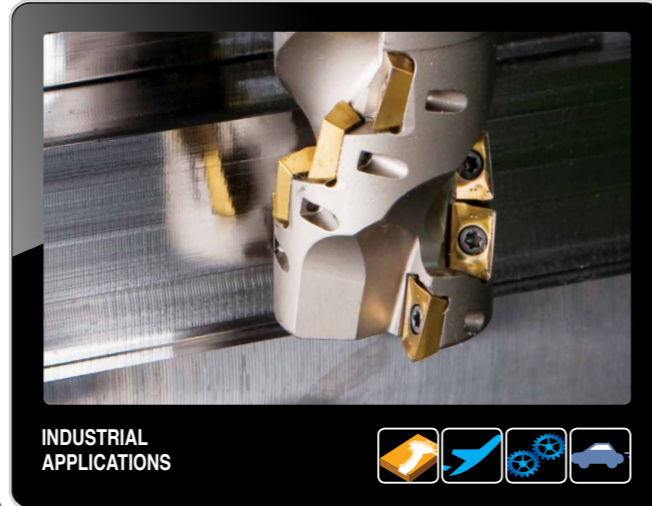
Total solution for shoulder milling with 90 degree, 6 corner double-sided positive inserts



# CHASEMILL

## CHASEMILL 90° line - New improved APKT 09T3

- High helix angle decreases the cutting load to achieve a stable and smooth cutting performance
- The new face milling cutter has internal coolant whilst the new end mill has coolant as an option



INDUSTRIAL APPLICATIONS



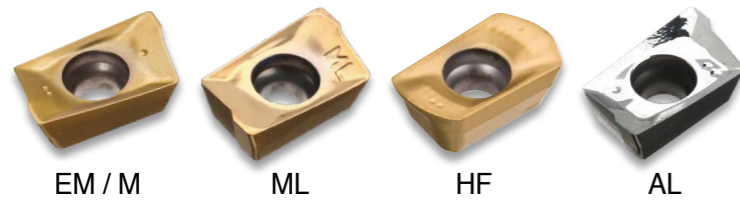
# CHASE2MILL

## 90 degree line with 4 cutting edges -CHASE2MILL AN11 & AN16 series

- High density cutter maximises productivity
- High positive cutting edges for smooth cutting action
- 2 insert options  
ANHX : Full ground edge - high precision type  
ANMX : High edge security - economical choice
- Ground edge & top polished insert available for aluminum machining



INDUSTRIAL APPLICATIONS



### Cutter Range

- Face mill : Ø40mm - Ø80mm
- End mill : Ø10mm - Ø40mm
- Modular type : Ø10mm - Ø40mm
- Extended flute : Ø20mm - Ø32mm



# CHASEALU

## High speed aluminum machining - CHASEALU XECT 1605

- Exceptional productivity for aluminum and non-ferrous material machining
- Can be applied to rough and finish machining
- Various corner radii from R0.4mm to R5.0mm available
- Secure, stable and unique "V" bottomed insert design

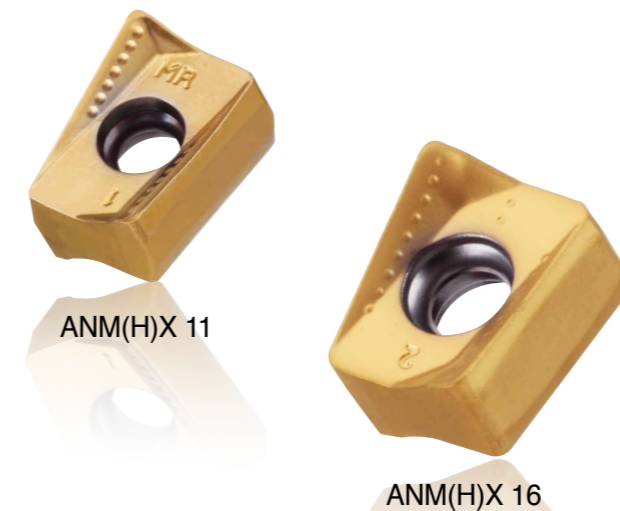


INDUSTRIAL APPLICATIONS



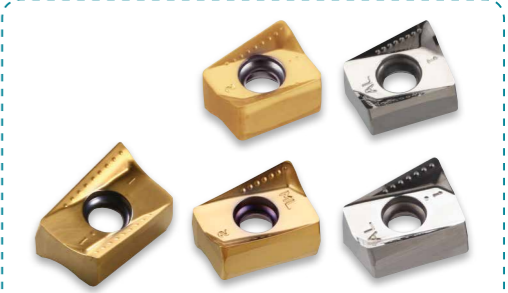
### Cutter Range

- Face mill : Ø40mm - Ø125mm
- End mill : Ø25mm - Ø40mm
- Modular type : Ø25mm - Ø40mm



### Cutter Range

- Face mill : Ø40mm - Ø200mm
- End mill : Ø25mm - Ø50mm
- Modular type : Ø25mm - Ø50mm
- Extended flute(AN11) : Ø32mm - Ø80mm
- Extended flute(AN16) : Ø40mm - Ø100mm



Various insert types enable a wide range of applications

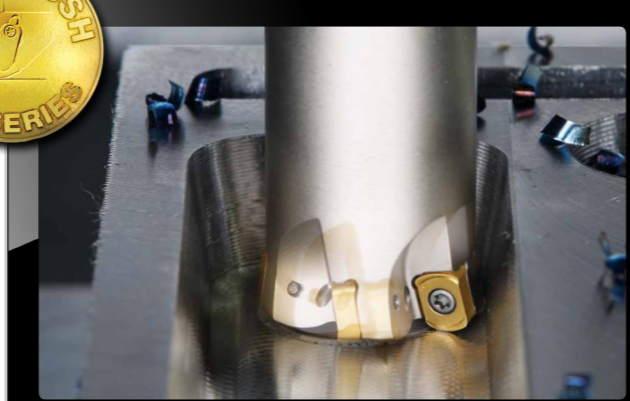
- AN11 : M / ML / AL
- AN16 : M / ML / MR / AL



# CHASE<sup>2</sup>FEED

## High feed cutters with BLMP 06 & BLMP 09 inserts

- Particularly suitable for high feed machining
- Low cutting forces
- 4 corner inserts for cost effective machining
- Low chipping tendency



INDUSTRIAL APPLICATIONS



### Cutter Range

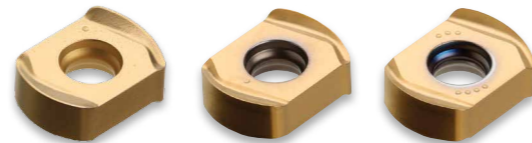
- Face mill : Ø32mm - Ø100mm
- End mill : Ø25mm - Ø42mm
- Modular type : Ø25mm - Ø42mm



BLMP 06



BLMP 09



M

MM

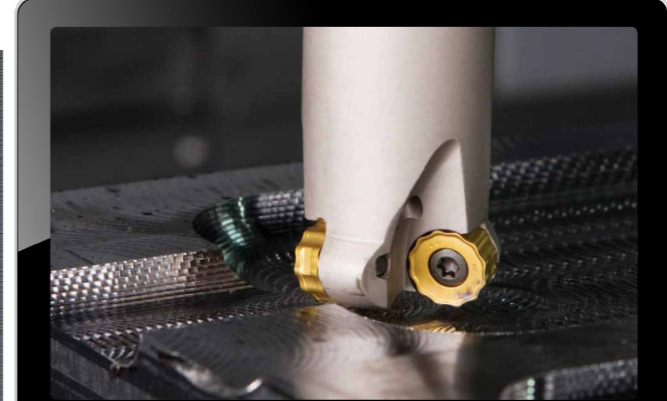
ML



# CHASE<sup>2</sup>MOLD

## Economical double sided round inserts

- Unique double-sided round inserts available in shred & conventional type
- New insert and cutter pocket structure for strong & robust clamping (Anti-rotating system)
- When machining with a long overhang cutter, it is recommended that the shred type insert is used to reduce the cutting load



INDUSTRIAL APPLICATIONS



### Cutter Range

- Face mill : Ø32mm - Ø200mm
- End mill : Ø25mm - Ø50mm
- Modular type : Ø25mm - Ø40mm



RNMU 10/12/16



ML

M



# CHASEMOLD

## New improved CHASEMOLD -RYMX series

- The thick insert and extremely strong screw system on the new CHASEMOLD line make it suitable for heavy or demanding applications
- Reliable machining even under difficult conditions
- Inserts designed with new geometry for optimal tool life



INDUSTRIAL APPLICATIONS



### Cutter Range

- Face mill : Ø32mm - Ø250mm
- End mill : Ø16mm - Ø50mm
- Modular type : Ø16mm - Ø42mm



RYM(H)X



# FINEBALL

## Accurate profile machining

- High helix cutting edges guarantee smooth and stable cutting
- The FINEBALL demonstrates excellent run-out and precision due to its optimised design
- Internal coolant system promotes excellent chip evacuation and prolongs tool life



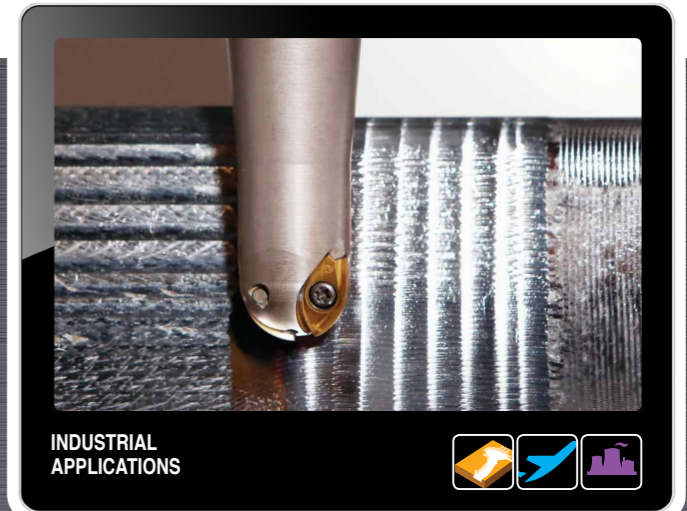
INDUSTRIAL APPLICATIONS



# DUETBALL

## An excellent choice for rough & semi-finish profile milling

- Dovetail mechanism clamping provides increased security and insert clamping
- High helix cutting edge for smooth milling
- Economical double sided insert
- Inserts are applicable for both internal and external pockets making it easier to control inventory



INDUSTRIAL APPLICATIONS

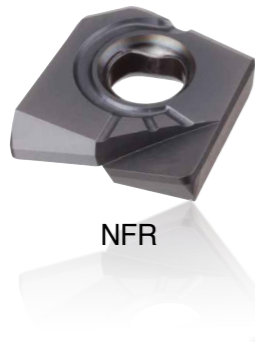


### Cutter Range

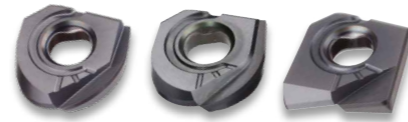
- End mill : Ø08mm - Ø32mm



NFB



NFR



2FB



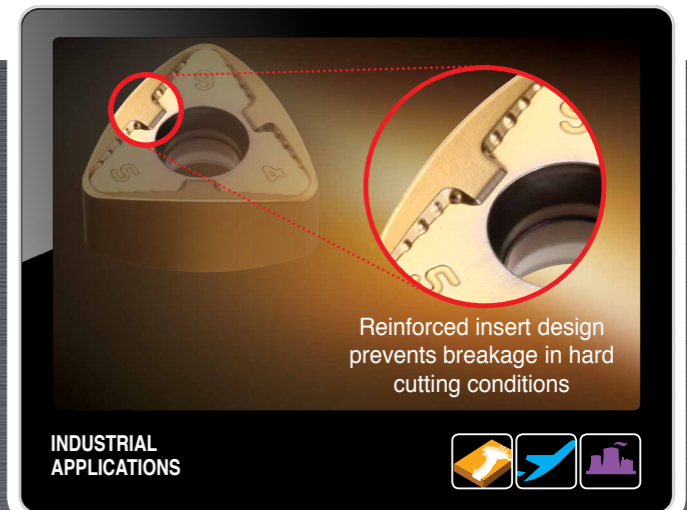
### Cutter Range

- End mill : Ø16mm - Ø32mm

# CHASE<sup>2</sup>BALL

## Optimized double sided inserts for rough milling

- 6 cutting edges promote economy and productivity in cast iron and tool steel
- Low cutting resistance credit to half effective flute design
- Thick inserts (8mm) enable stable machining
- Insert design with high positive cutting edges
- Excellent performance in heat treated steel and welded components



Reinforced insert design prevents breakage in hard cutting conditions

INDUSTRIAL APPLICATIONS



6RBE



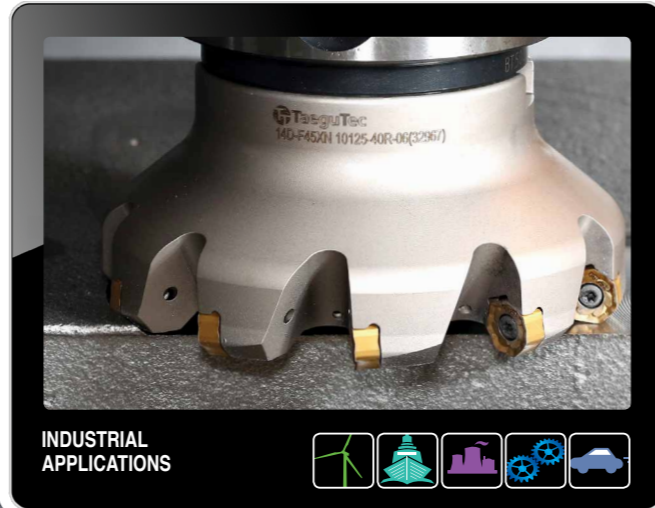
### Cutter Range

- End mill : Ø50mm

# CHASE<sup>2</sup> HEPTA

## New milling solution for general machining of cast iron and steel

- 45° entry angle face mill available with 14 corner economical double sided inserts
- Ideal solution for rough machining on cast iron and steel
- Efficient and smooth machining credit to its positive cutting edge geometry that lowers cutting loads during rough machining

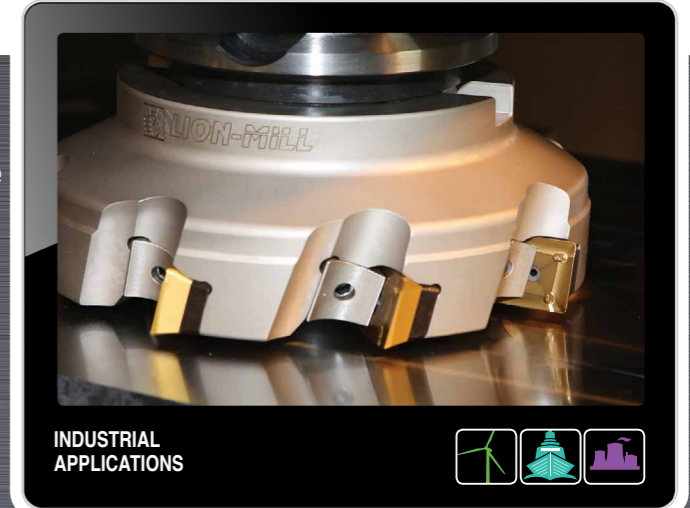


# LIONMILL

## For heavy machining

4 cutting edges with 60° & 90° entering angle line

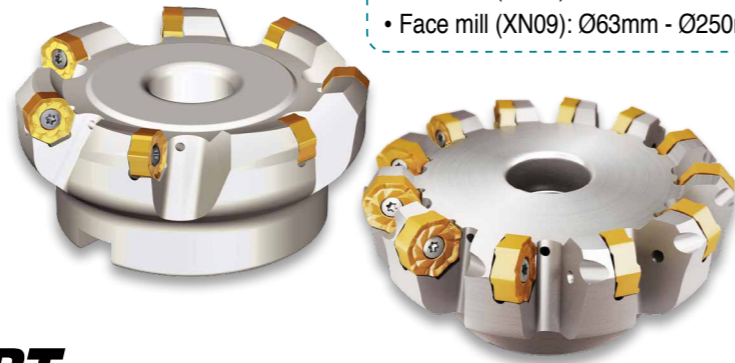
- New dovetail wedge design ensures stable and strong clamping
- Excellent chip control due to wide chip evacuation system
- Reinforced durability credit to thick shim



XNM(H)U 09



XNM(H)U 06



**Cutter Range**

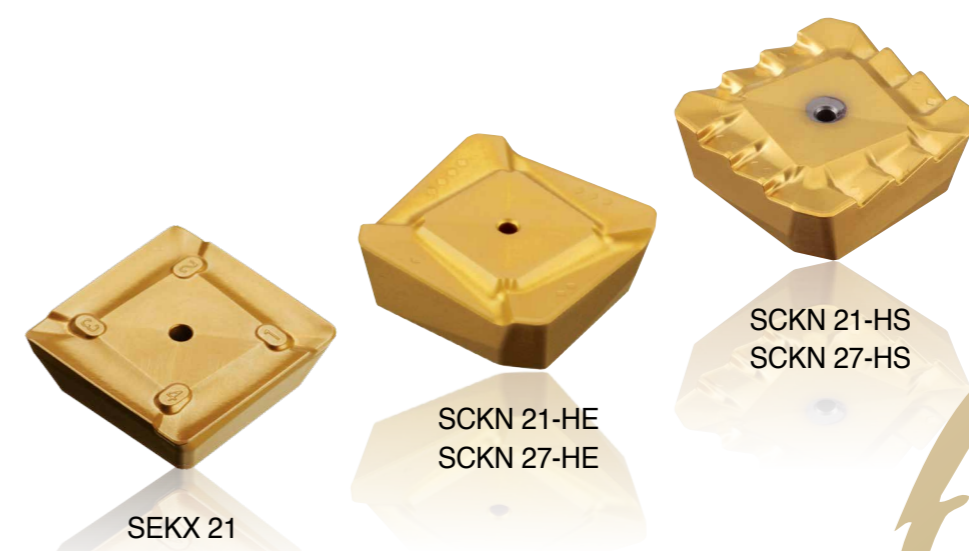
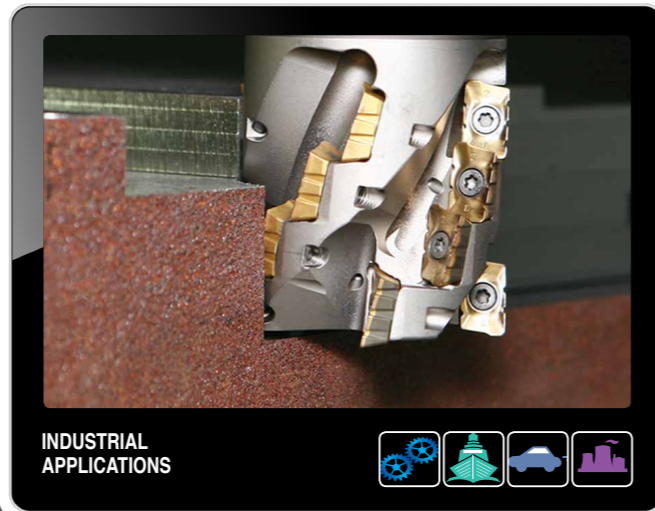
- Face mill (XN06): Ø50mm - Ø160mm
- Face mill (XN09): Ø63mm - Ø250mm

## CHIP SPLITTER INSERT

for CHASEMILL & CHASE<sup>2</sup>MILL Line

### New chip splitter insert for top productivity with reduced cutting force

- Reduces cutting load – High table feed can be achieved
- Reduces vibration (chatter free) and noise
- Improves chip evacuation (chip split into small pieces)
- Suitable for long overhang machining (weak machining and fixture applications)



**Cutter Range**

- Face mill : Ø125mm - Ø500mm



APKT 12-SM

ANHX 16-SM

APKT 17-SM

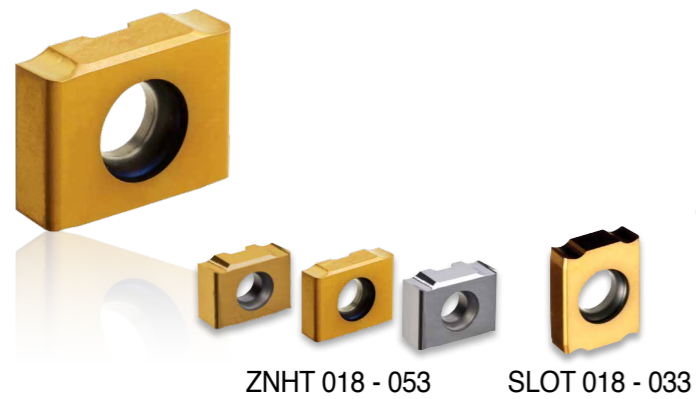




# TOPSLOT

## Slot mill line with ZNHT & SLOT insert

- Smooth and light cutting from positive chip former
- Robust insert design with 4-corner cutting edges (2 right / 2 left corners)
- Precision ground inserts for high accuracy



**Cutter Range**  
 • Diameter : Ø25mm - Ø250mm  
 • Width : 3mm - 10mm

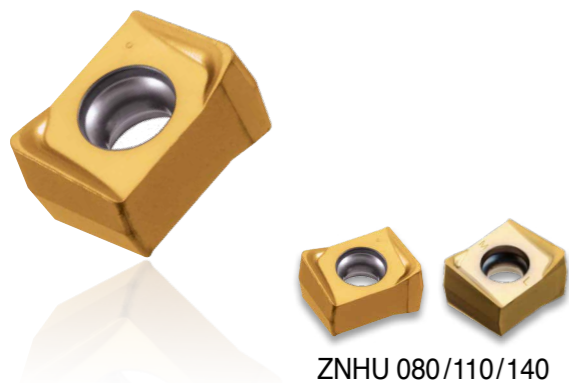


# TOPSLOT

## Slot mill line with ZNHU insert

### Economical double sided insert

- Standard slot width 10-26mm (fixed and adjustable type)
- Double sided durable insert with high positive rake angle for smooth cutting action
- Economical 4-corner cutting edges (2 right / 2 left corners)
- Simple, strong & stable adjustment mechanism with innovative design with fewer components



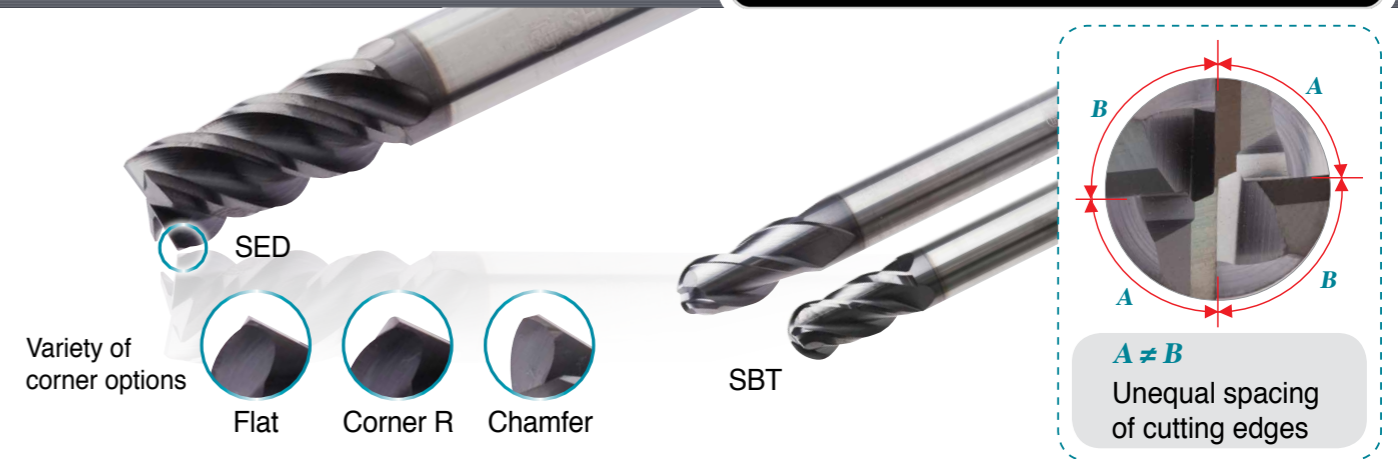
**Cutter Range**  
 • Diameter : Ø100mm - Ø250mm  
 • Width : 10mm - 26mm



# STARMILL

## Difficult-to-cut material machining

- Unequal spaced cutting edges with a high helix angle means decreased vibration and increased feed rate
- Excellent solution for difficult-to-cut materials such as stainless steel, titanium and inconel
- Variety of corner options (Flat, Chamfer, corner R and Ball type) deliver the opportunity to cover most machining applications with outstanding performance



# SOLIDFEED

## New high feed solid carbide end mill

- Efficient and reduces cycle time with extremely high feed machining capability
- Lowers cutting forces with unique corner geometry
- Designed for rough machining applications including slotting, shouldering, pocketing and helical ramping
- Maximum feed per tooth 1.0 mm/tooth



# ALUMILL

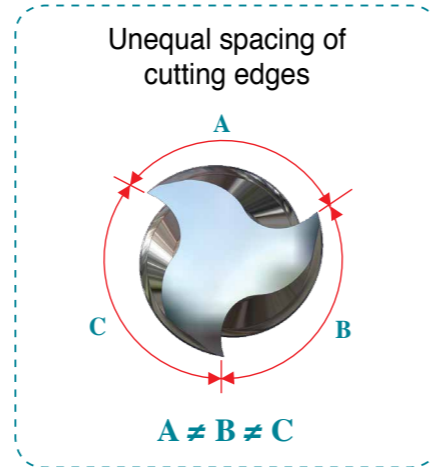
## New concept S/C end mill for highly effective aluminium machining

- Chatter free and lower cutting load credit to unique cutting edge wave, variable helix angle and unequal spacing of cutting edges
- Enables high productivity in high speed end milling of aluminum and non-ferrous materials
- Optimally designed for both rough milling and finish milling

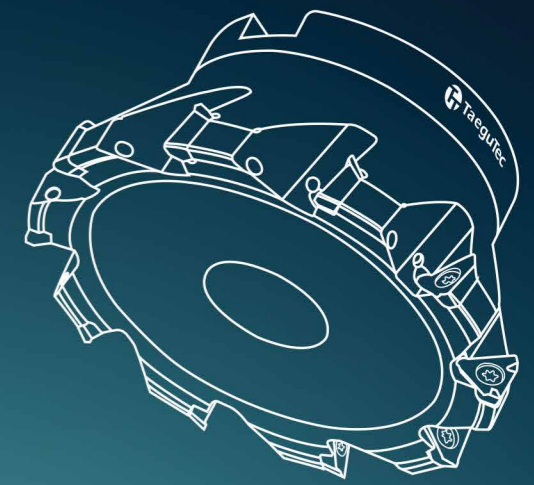


Wave cutting edge

AWE



# GOLD RUSH



# TaeguTec Global Supply Network

## World Headquarters

**TaeguTec Ltd.**  
1040 Gachang-ro, Gachang-myeon,  
Dalseong-gun, Daegu 711-865, KOREA  
Tel: +82-53-760-7640  
Web: <http://www.taegutec.com>

## Argentina

**TaeguTec Argentina SA**  
11 de septiembre 4237- Piso 7  
(C1429BJC) Ciudad Autónoma  
Buenos Aires, Argentina  
Tel: +54-11-4702-6222  
E-mail: [ventas@taegutec.com.ar](mailto:ventas@taegutec.com.ar)

## Australia

**TaeguTec Australia Pty Ltd.**  
Unit 37, Five Ways Business  
Park Keysborough Close  
Keysborough, Vic 3173 Australia  
Tel: +61-3-9798-1900  
E-mail: [sales@taegutec.com.au](mailto:sales@taegutec.com.au)

## Belarus Rep.

**Twing-M**  
3/2 Klumova Str, Minsk, 220009,  
Republic of Belarus  
Tel: +375-17-506-3238  
E-mail: [info@twing.by](mailto:info@twing.by)

## Belgium

**Usi-Tools S.P.R.L.**  
Parc Industriel Des Hauts  
Sarts 1 Avenue, 145  
4040 Herstal, Belgium  
Tel: +32-42-480-481  
+32-475-783-204  
E-mail: [usitools@skynet.be](mailto:usitools@skynet.be)

## Brazil

**TaeguTec Brasil Ltda.**  
Rua Tito, 104-Lapa-Cep 05051-000  
São Paulo, Brasil  
Tel: +55-11-3868-6032  
E-mail: [vendas@taegubrasil.com.br](mailto:vendas@taegubrasil.com.br)

## Chile

**Cutting Tools Chile E.I.R.L.**  
Alcalde Pedro Alarcón N° 765,  
San Miguel, Santiago - Chile  
Tel: +56-2-553 6944  
+56-2-552 1181  
E-mail: [ventas@cuttingtools.cl](mailto:ventas@cuttingtools.cl)

## China

**TaeguTec China**  
RM 1205, Huishang Office Building,  
No. 1286 of Minsheng RD,  
Pudong New District, Shanghai, China  
PC: 200135  
Tel: +86-21-5106-1260  
E-mail: [mail@taegutec.com.cn](mailto:mail@taegutec.com.cn)

## Croatia

**Intehna Zagreb d.o.o.**  
Susedsko polje bb, HR-10090  
Zagreb-Susedgrad, Croatia  
Tel: +385-1-3436-919  
E-mail: [intehna-zagreb@zg.t-com.hr](mailto:intehna-zagreb@zg.t-com.hr)

## Czech Rep.

**TaeguTec ČR s.r.o.**  
Domažlická 180a, CZ-31800 Plzeň,  
Czech Rep.  
Tel: +420 373 720 999  
E-mail: [top@taegutec.cz](mailto:top@taegutec.cz)

## Denmark

**TaeguTec Scandinavia A/S.**  
Omogade 8, DK-2100 Copenhagen,  
Denmark  
Tel: +45-7022-0103  
E-mail: [tts@taegutec.dk](mailto:tts@taegutec.dk)

## Finland

**Knorring OY AB**  
Mestarintie 4 FI-01730 Vantaa, Finland  
Tel: +358 956 041  
E-mail: [christian.borenus@knorring.fi](mailto:christian.borenus@knorring.fi)

## France

**Ingersoll TaeguTec France S.A.R.L.**  
21, rue Gallée F-77420  
CHAMPS-sur-MARNE, France  
Tel: +33 (0)1 64 68 45 36  
E-mail: [info@ingersoll-imc.fr](mailto:info@ingersoll-imc.fr)

## Germany

**Ingersoll Werkzeuge GmbH**  
Kalteiche Ring 21-25, D-35708, Haiger,  
Germany  
Tel: +49 2773-742 0  
E-mail: [info@Ingersoll-IMC.de](mailto:info@Ingersoll-IMC.de)

## Greece

**FG Technotools-G & K.Fakitsas Co.**  
25th Martiou & Thrakis 15, 15235 Vrilissia,  
Athens, Greece  
Tel: +30-2-10-832-0752  
E-mail: [Giorgos@technotools.gr](mailto:Giorgos@technotools.gr)

## Hungary

**TaeguTec Hungary Kft.**  
1142 Budapest, Kassai u.151.  
Tel: +36-1-273-29-52  
E-mail: [info@taegutec.hu](mailto:info@taegutec.hu)  
Web: <http://www.taegutec.hu>

## India

**TaeguTec India P Ltd.**  
Plot Nos.119 & 120, Bommasandra  
Industrial Area, Phase 4, Bangalore  
560 099, India  
Tel: +91-80-2783-9111  
E-mail: [shankar@taegutec-india.com](mailto:shankar@taegutec-india.com)

## Indonesia

**PT. TaeguTec Indonesia**  
Easton Commercial Center  
Jl. Gunung Panderman Blok B no. 12  
Cikarang Selatan-Bekasi 17550, Indonesia  
Tel: +62-21-29093176/78/79  
E-mail: [taegutec.co.id](mailto:taegutec.co.id)

## Ireland

**Hardmetal Machine Tools Ireland Ltd.**  
Dargan House, Duncairn Terrace,  
Bray Co. Wicklow, Ireland  
Tel: +353-1-286-2466  
E-mail: [sales@hardmetal.ie](mailto:sales@hardmetal.ie)

## Italy

**Ingersoll TaeguTec Italia S.R.L.**  
Via Montegrappa 78, 20020 Arese (MI), Italy  
Tel: +39 02.99.76.67.00  
E-mail: [taegutec@taegutec.it](mailto:taegutec@taegutec.it)

## Japan

**TaeguTec Japan Ltd.**  
- Osaka / Head office  
Senri Asahi Hankyu Bldg. 15F  
1-5-3 Shinsenri-Higashimachi  
Toyonaka-shi Osaka 560-0082, Japan  
Tel: +81-6-6835-7731  
E-mail: [taegutec@taegutec.co.jp](mailto:taegutec@taegutec.co.jp)  
Website: <http://www.taegutec.co.jp>

- Nagoya / Branch office  
Tel: +81-52-745-2451

- Tokyo / Branch office  
Tel: +81-3-5753-6281

## Lithuania

**UAB Robur Lt**  
R.Kalantos str. 161  
LT-52315 Kaunas, Lithuania  
Tel: +370-37-328487  
E-mail: [sigitas@robur.lt](mailto:sigitas@robur.lt)

## Malaysia

**TaeguTec Tooling Systems Malaysia Sdn. Bhd**  
No.23-1&2, Jalan Anggerik Vanilla  
BF 31/BF Kota Kemuning, Seksyen 31  
40460 Shah Alam Selangor Darul, Malaysia  
Tel: +60-16624 9432  
E-mail: [info@taegutec.com.my](mailto:info@taegutec.com.my)

## The Netherlands

**T.C.E.**  
Kennedylaan 14, 5466 AA, Veghel,  
The Netherlands  
Tel: +31 (413) 38 83 10  
E-mail: [info@taegutec.nl](mailto:info@taegutec.nl)  
Website: <http://www.taegutec.nl>

## New Zealand

**TT Pacific**  
1/501 Mt. Wellington Highway  
Sylvia Park, Auckland, New Zealand 1060  
Tel: +64-9-573-1280  
E-mail: [sales@iscar.co.nz](mailto:sales@iscar.co.nz)

## Pakistan

**Dynamic Tooling Services**  
Office No.301, 3rd Floor,  
Royal Center, Blue Are, Fazal-E-  
Haque Road, Islamabad, Pakistan  
Tel: +92-51-2806197  
E-mail: [info@dts.com.pk](mailto:info@dts.com.pk)

## Philippines

**Colt Commercial Inc.**  
Suite 508 Padilla delos Reyes Bldg.  
232 Juan Luna St., Binondo, Manila  
Philippines  
Tel: +63-2-244-9756  
E-mail: [cyrus@colt.com.ph](mailto:cyrus@colt.com.ph)

## Poland

**TaeguTec Poland Sp. z o.o.**  
Ul. Koscielna 8  
52-314 Wroclaw, Poland  
Tel: +48 71 785 40 85  
E-mail: [sales@taegutec.pl](mailto:sales@taegutec.pl)

## Portugal

**Hexatool, S.A.**  
Rua Casal Galego, No. 40.44  
2430 Marinha Grande, Portugal  
Tel: +351-244-550424/5  
E-mail: [hexatool@hexatool.com](mailto:hexatool@hexatool.com)

## Romania

**SC TaeguTec Tools SRL**  
Splaiul Unirii, nr. 4, Bl. B3, 5th Floor,  
Office 5.1, District 4., Bucharest,  
Romania, 040031  
Tel: +4021 210 3108  
E-mail: [marian.luca@taegutec.ro](mailto:marian.luca@taegutec.ro)

## Russia

**TaeguTec Russia**  
123290, Russia, Moscow,  
2nd Magistralnaya str. 8A, building 5  
Tel: +7-495-627-79-17  
E-mail: [sales@taegutec.ru](mailto:sales@taegutec.ru)

## Serbia

**Intehna Beo d.o.o.**  
Autoput 22, 11080 Zemun, Serbia  
Tel: +381-11-3149-092  
E-mail: [info@intehnabeo.rs](mailto:info@intehnabeo.rs)

## Singapore

**TT Tooling Systems**  
BK502, #03-823, Jurong West Avenue 1,  
Singapore 640502  
Tel: +65-6-4254918  
E-mail: [kltan@sinotool.com.sg](mailto:kltan@sinotool.com.sg)

## Slovakia

**TaeguTec Slovakia, s.r.o.**  
Bytčická 2/44 010 01 Zilina  
Slovak Republic  
Tel: +421 41 7000056  
E-mail: [matus@taegutec.sk](mailto:matus@taegutec.sk)

## Slovenia

**Intehna d.o.o.**  
Špruha 40, Si-1236, Trzin, Slovenia  
Tel: +386-1-580-9260  
E-mail: [info@intehna.si](mailto:info@intehna.si)

## South Africa

**TaeguTec South Africa (Pty) Ltd.**  
P.O. Box 3121, Springs, 1560  
43 South Main Reef Road,  
New Era Springs Gauteng, South Africa  
Tel: +2711-362-1500  
E-mail: [info@taegutec.co.za](mailto:info@taegutec.co.za)

## Spain

**TaeguTec Spain S.L**  
Miquel Servet, 35 P.I.Bufoalvent  
08243 Manresa (Barcelona), Spain  
Tel: +34-93-878-7309-10  
E-mail: [info@taegutec.es](mailto:info@taegutec.es)

## Sweden

**SMV Verktyg AB**  
Parkgatan 6  
SE-333 31 Smalandsstenar, Sweden  
Tel: +46-371-343-48  
E-mail: [verktyg@smv.se](mailto:verktyg@smv.se)

## Taiwan

**TaeguTec Taiwan**  
3F, No 56, Min Tai St., Ku-Shan Dist.,  
Kaohsiung City 804, Taiwan (R.O.C.)  
Tel: +886-7-5505996  
E-mail: [info@tw.taegutec.com](mailto:info@tw.taegutec.com)

## Thailand

**TaeguTec(Thailand) Co.,Ltd.**  
6/177 M.7 Srinakarn Rd.,  
T.Bangmuang, A.Muangsamutprakarn,  
Samutprakarn 10270, Thailand  
Tel: +662-759-9300, 662-759-9172  
E-mail: [info@taegutechthai.co.th](mailto:info@taegutechthai.co.th)

## Turkey

**TaeguTec Turkey**  
TOSB Otomotiv Yan Sanayi Ihtisas  
Organize Sanayi Bolgesi  
1.Cad. 15.Sokak No:9 41420 Şekerpınar  
Çayirova/KOCAELI, Türkiye  
Tel: +90-850-201-69-00  
E-mail: [info@taegutec.com.tr](mailto:info@taegutec.com.tr)

## Ukraine

**TaeguTec Ukraine**  
40-b Pushkin prospect Dnepropetrovsk  
Ukraine, 49006  
Tel: +38-056-790-70-99  
E-mail: [td@taegutec.com.ua](mailto:td@taegutec.com.ua)

## United Arab Emirates

**A.F.Husain**  
Al Ghurair W/H Shed No. 60  
Al Quoz Industrial Area  
P.O. Box: 4007 Dubai, UAE  
Tel: +971-4-3400034  
E-mail: [info@afh-tools.com](mailto:info@afh-tools.com)

## United Kingdom

**TaeguTec UK Ltd.**  
Waterside, Grange Park, Wetherby,  
Leeds, LS22 5NB, United Kingdom  
Tel: +44-1937-589-828  
E-mail: [info@taegutec.co.uk](mailto:info@taegutec.co.uk)

## U.S.A.

**Ingersoll Cutting Tools**  
845 S Lyford Road Rockford,  
IL 61108-2749, U.S.A.  
Tel: +1-815-387-6600  
E-mail: [info@ingersoll-imc.com](mailto:info@ingersoll-imc.com)

## Vietnam

**DMC Technology Co., Ltd.**  
No. 109, Cong Hoa Street, Ward 12,  
Tan Binh District, Ho Chi Minh City,  
Vietnam.  
Tel: +84-8-62925556  
E-mail: [info@dmctech.com.vn](mailto:info@dmctech.com.vn)



- Cat.No: 6137844
- English Version: CT 03/2014
- ©TaeguTec LTD.