

# NEW PRODUCT NEWS

## T-CLAMP ULTRA PLUS



## New Reinforced Type Blades with Screw Clamping



# T-CLAMP

ULTRA PLUS

## New Reinforced Type Blades with Screw Clamping

TaeguTec has launched a new reinforced type blade with screw clamping for additional strength in parting and grooving applications.

The new TGBR/L type blades are thicker than the current line making it perfectly suited for machines equipped with main and sub-spindles as well as in long overhang machining using multiple spindles.

The blade also includes a screw clamp for additional rigidity that enhances the existing blade's performance between main and sub-spindles of turn-mill machines. The reinforced blade is an excellent tool for parting and grooving applications.

### FEATURES

- Reinforced blade optimally designed for parting and grooving

- Thicker blade enables better rigidity and stiffness

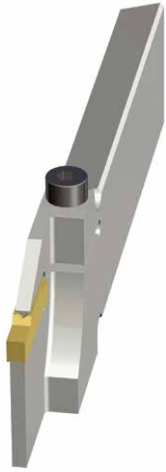


- Screw clamping design also improves rigidity for overall better machining performance

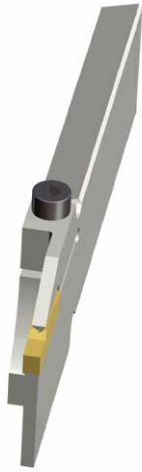


Notice

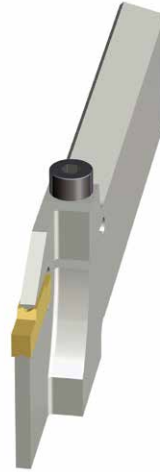
- When selecting a blade, please note there are four different blade types each with a different blade shape (see the illustrations below).



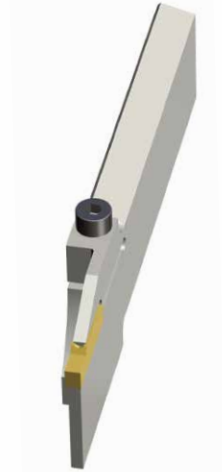
TGBL..D□□R



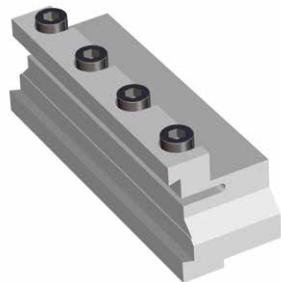
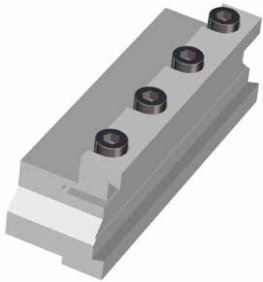
TGBL..D□□L



TGBR..D□□R



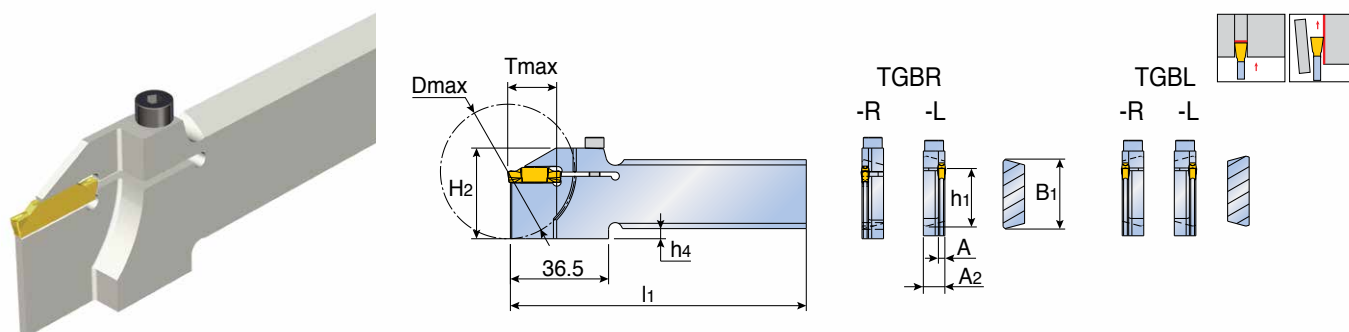
TGBR..D□□L



Standard TTBN & TTBU block can be used for both right and left-handed tool.

# TGBR/L -D..R/L

## Reinforced type blades with screw clamping





Designation	Insert seat size	Dimension (mm)									Block	Insert
		B1	A	A2	l1	h1	H2	h4	Tmax	Dmax		
<b>TGBR 26-2-D50R</b> <sup>(1)</sup>	2	26	1.8	8	110	21.4	33.7	3.6	18	50	TTBN/U..-26	TDC / J / T TDXU / XT TSC / J
<b>26-2-D50L</b> <sup>(2)</sup>	2	26	1.8	8	110	21.4	33.7	3.6	18	50		
<b>TGBL 26-2-D50R</b> <sup>(2)</sup>	2	26	1.8	8	110	21.4	33.7	3.6	18	50	TTBN/U..-26	
<b>26-2-D50L</b> <sup>(1)</sup>	2	26	1.8	8	110	21.4	33.7	3.6	18	50		
<b>TGBR 26-3-D50R</b> <sup>(1)</sup>	3	26	2.4	8	110	21.4	33.7	3.6	18	50	TTBN/U..-26	
<b>26-3-D50L</b> <sup>(2)</sup>	3	26	2.4	8	110	21.4	33.7	3.6	18	50		
<b>TGBL 26-3-D50R</b> <sup>(2)</sup>	3	26	2.4	8	110	21.4	33.7	3.6	18	50	TTBN/U..-26	
<b>26-3-D50L</b> <sup>(1)</sup>	3	26	2.4	8	110	21.4	33.7	3.6	18	50		
<b>TGBR 32-2-D50R</b> <sup>(3)</sup>	2	32	1.8	8	120	24.9	33.7	-	18	50	TTBN/U..-32	
<b>32-2-D50L</b> <sup>(2)</sup>	2	32	1.8	8	120	24.9	33.7	-	18	50		
<b>TGBL 32-2-D50R</b> <sup>(2)</sup>	2	32	1.8	8	120	24.9	33.7	-	18	50	TTBN/U..-32	
<b>32-2-D50L</b> <sup>(3)</sup>	2	32	1.8	8	120	24.9	33.7	-	18	50		
<b>TGBR 32-3-D50R</b> <sup>(3)</sup>	3	32	2.4	8	120	24.9	33.7	-	18	50	TTBN/U..-32	
<b>32-3-D50L</b> <sup>(2)</sup>	3	32	2.4	8	120	24.9	33.7	-	18	50		
<b>TGBL 32-3-D50R</b> <sup>(2)</sup>	3	32	2.4	8	120	24.9	33.7	-	18	50	TTBN/U..-32	
<b>32-3-D50L</b> <sup>(3)</sup>	3	32	2.4	8	120	24.9	33.7	-	18	50		

• (1) for Traub machines, model TNC 30, TNM 28, TNS 26/30/42/112, TNA 300, TNK 260

• (2) for Tornos Bechler, model Emco 2000/20, 2000/26

• (3) for Traub machines, model TNC 42/65, TNM 42/65, TNS 42/60/65, TNA 300/400

### Spare parts

Designation	Screw	Wrench		
<b>TGBR/L -D..R/L</b>	 SH M4x0.7x16	 L-W3		

