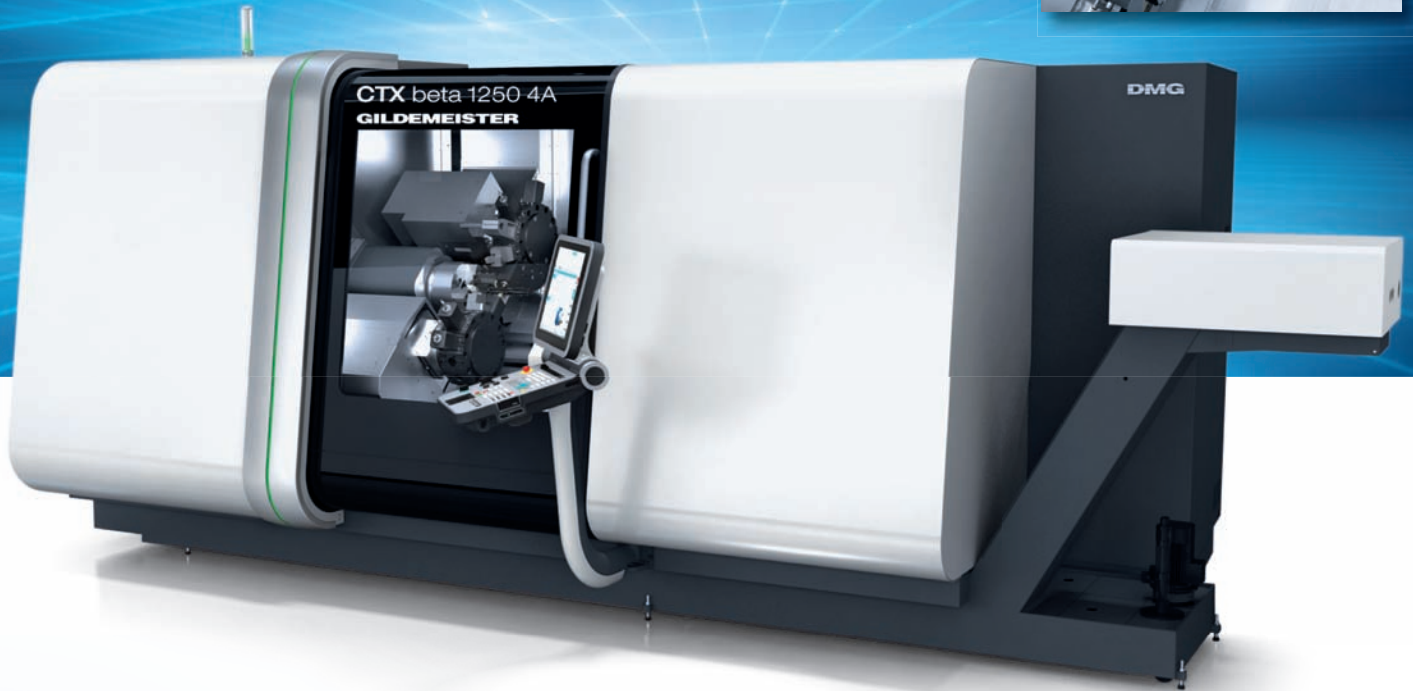


Precision meets Motion



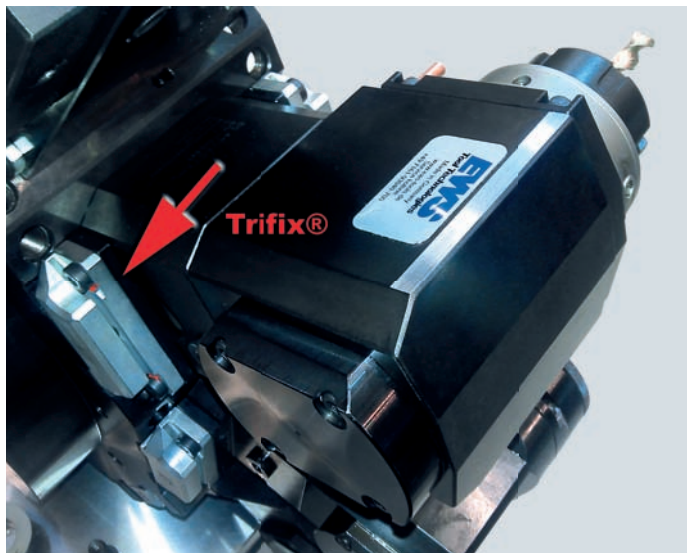
Werkzeugsysteme VDI40 für
Trifix® Revolver und **EWS . ProLine**

Tool systems VDI40 for **Trifix®** turrets and **EWS . ProLine**

Systempartnerschaft



Trifix®



Trifix® ist das neue Ausrichtsystem für Gildemeister Dreh-Fräszentren. Die beidseitig angebrachten Richtleisten greifen über je eine Schräge in hochpräzise gefertigte Aussparungen in der Revolveroberfläche.

Die Leisten sind mit Vorspannung voreingestellt. Die Federwirkung des Ausrichtsystems eliminiert die statische Überbestimmung. Dadurch ist die Verdrehlage der Werkzeugaufnahme ohne zusätzlichen Justieraufwand sichergestellt und reduziert somit die Rüstzeiten der Maschinen signifikant.

Durch den hohen Präzisionsanspruch ist eine Anwendung für doppelverzahnte Werkzeuge nicht möglich. Die Werkzeuge werden vorjustiert angeliefert und können direkt eingesetzt werden.

EWS ist für diese Werkzeuggeneration Systempartner von DMG / MORI SEIKI.

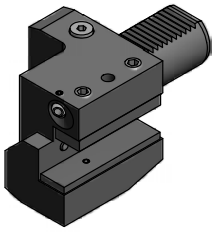
Trifix® is the new adjusting system for Gildemeister multi tasking machines. The double sided adjusting system is guided by a very precise key way at the surface of the turret. The plates are preloaded, and their resiliency eliminates static redundancy to allow the exact position of the tool to be secured. This significantly reduces the setting time of the machine, however because this is a highly sophisticated precision instrument it is not possible to use double serrated tool shafts.

Trifix® is supplied fully adjusted and can be used right away.

For this tool generation, EWS is appointed as qualified partner of DMG / MORI SEIKI.

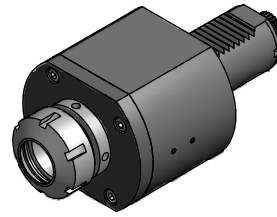


Inhaltsverzeichnis / Contents : Trifix®



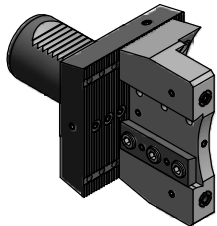
**Drehhalter /
Turning tool holder**

5.80 - 5.83



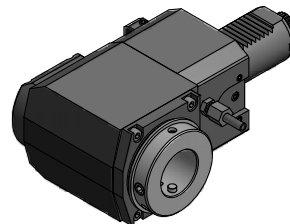
**Axial Bohr- und
Fräskopf /
Axial drilling and
milling head**

5.90 - 5.91



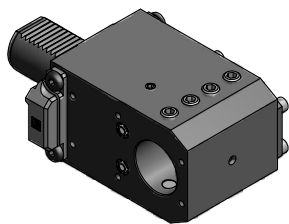
**Abstechhalter /
Infeed holder**

5.84



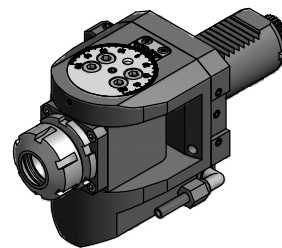
**Radial Bohr- und
Fräskopf /
Radial drilling and
milling head**

5.92 - 5.96



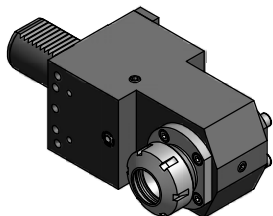
**Kombihalter /
Combi holder**

5.85 - 5.86



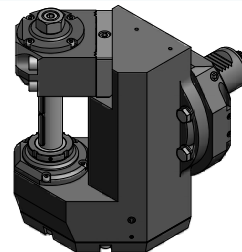
**Schwenkkopf /
Swivel head**

5.97



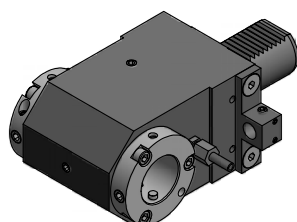
**Spannzangen-
aufnahme /
Collet chuck**

5.87



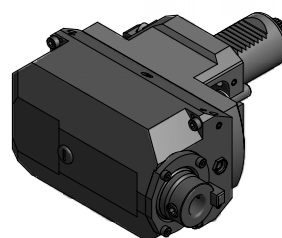
**Scheibenfräskopf /
Saw milling head**

5.97



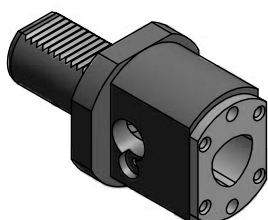
**Varia-Adapter /
Varia-adaptor**

5.88



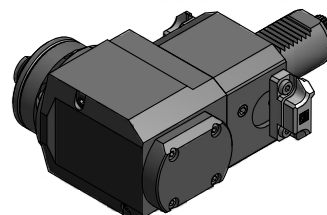
**Nutstoßwerkzeug /
Push slotter**

5.98



**Capto Adapter C4 /
Capto adaptor C4**

5.88

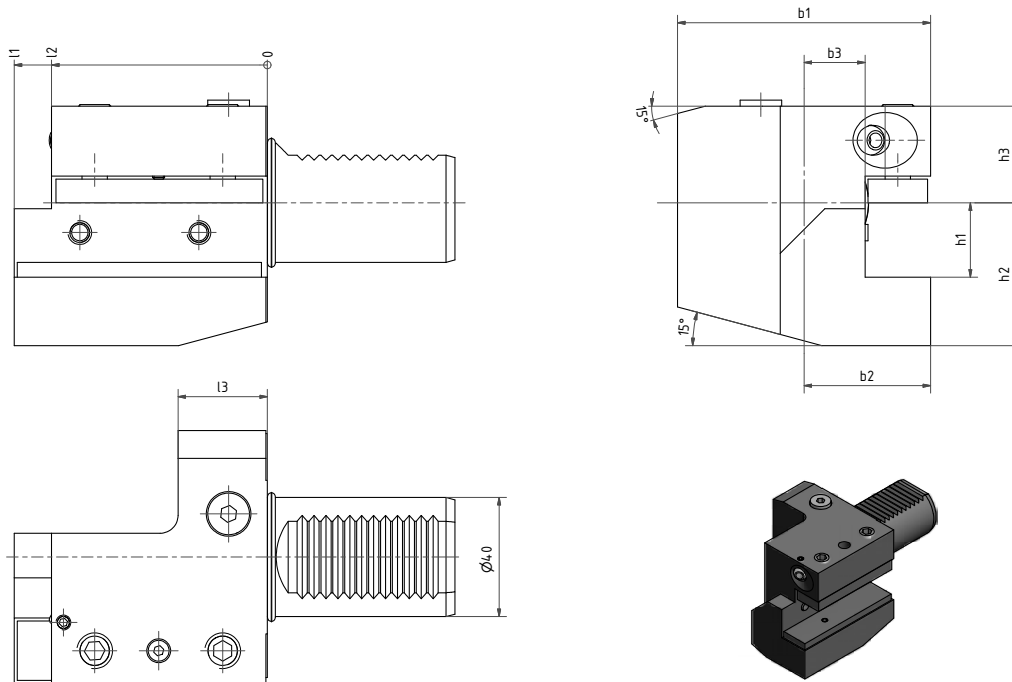


**Multiform /
Multiform**

5.98

Außendrehhalter rechts

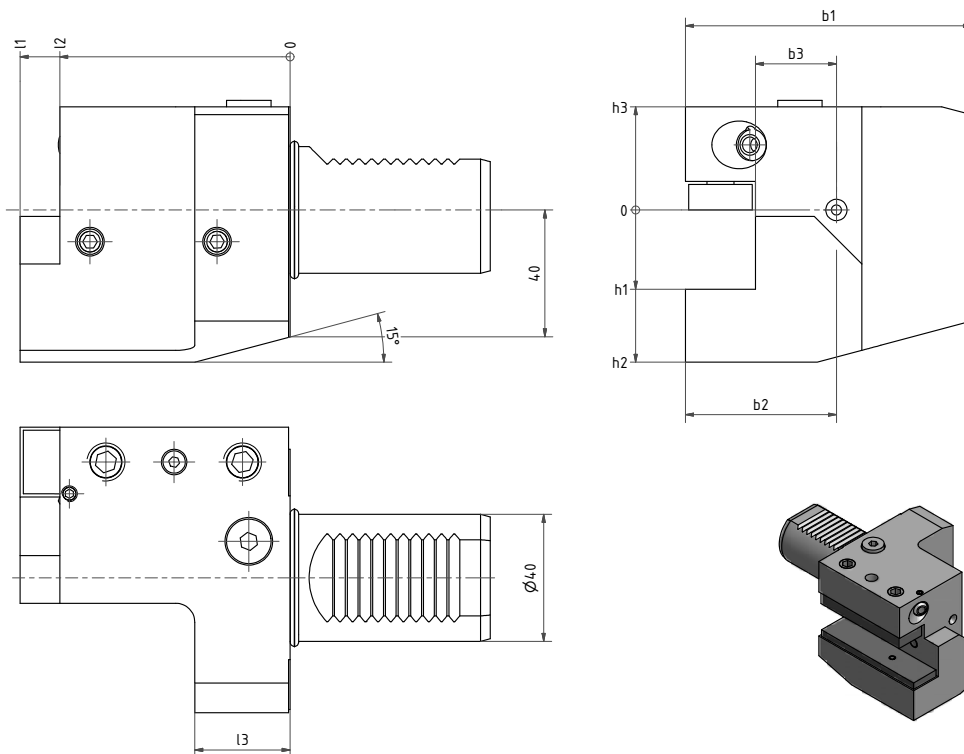
OD-holder right hand



Nr. / No.	h1	h2	h3	b1	b2	b3	l1	l2	l3
1.4025/20	25	48	32,5	85	42,5	20,5	85	72,5	30
1.4025B2=96L1=116	25	48	32,5	138,5	96	70	116	103,5	35

Außendrehhalter links

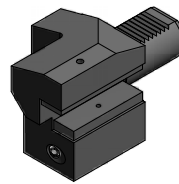
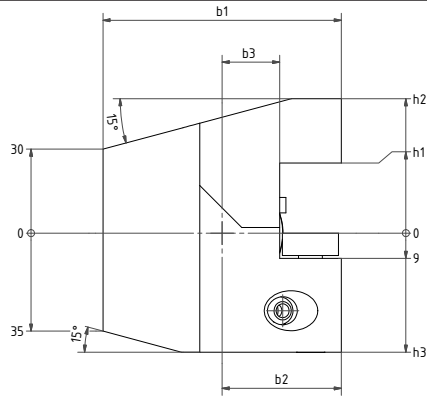
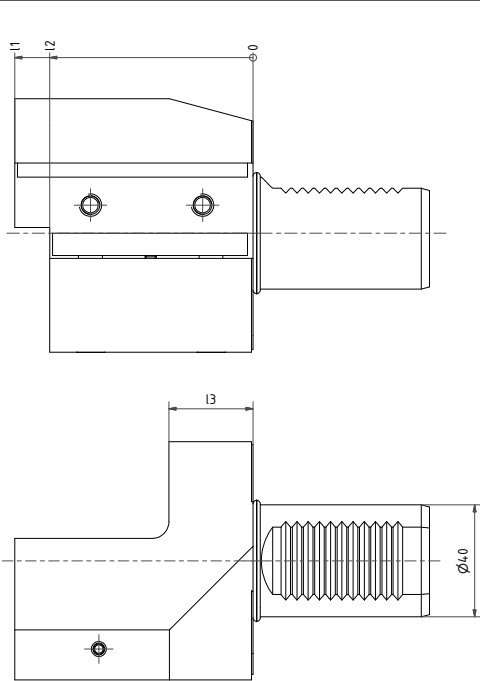
OD-holder left hand



Nr. / No.	h1	h2	h3	b1	b2	b3	l1	l2	l3
4.4025/20	25	48	32,5	90	47,5	25,5	85	72,5	30
4.4025B5=96L1=116	25	48	32,5	138,5	96	70	116	103,5	35

Außendrehhalter rechts

OD-holder right hand

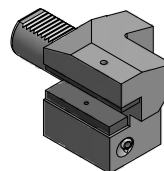
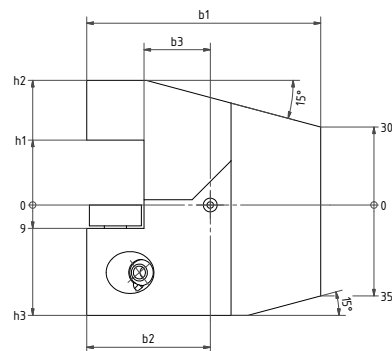
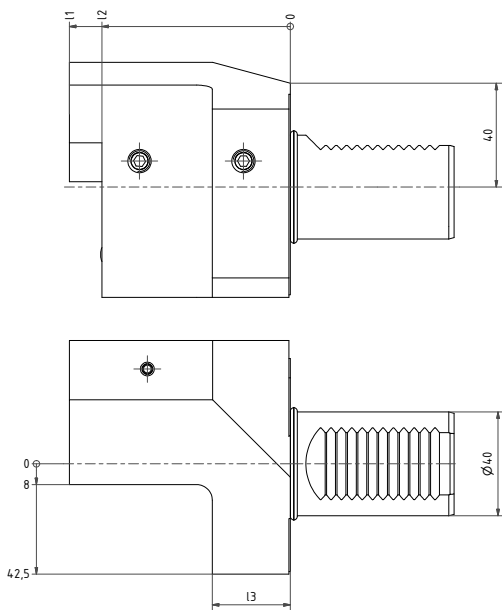


überkopf / over head

Nr. / No.	h1	h2	h3	b1	b2	b3	l1	l2	l3
2.4025/20	25	48	32,5	85	42,5	20,5	85	72,5	30

Außendrehhalter links

OD-holder left hand

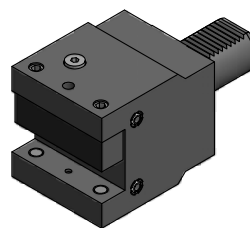
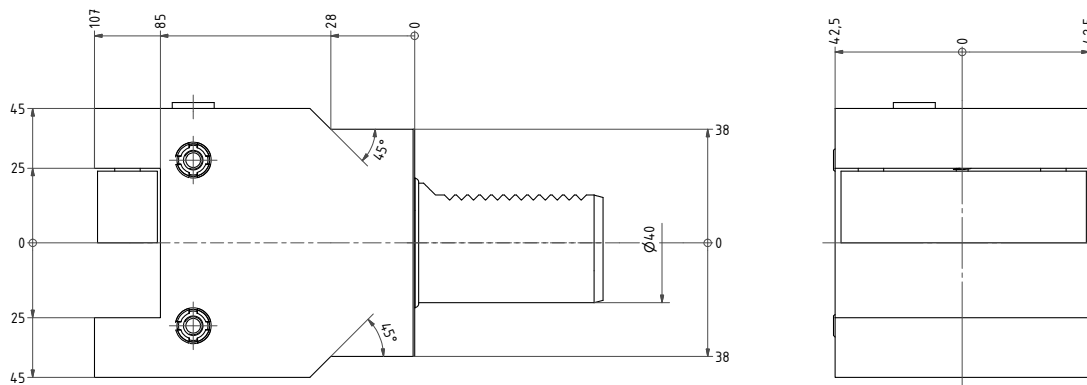


überkopf / over head

Nr. / No.	h1	h2	h3	b1	b2	b3	l1	l2	l3
3.4025/20	25	48	32,5	90	47,5	25,5	85	72,5	30

Plandrehhalter

Facing holder

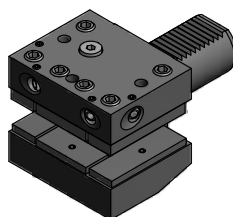
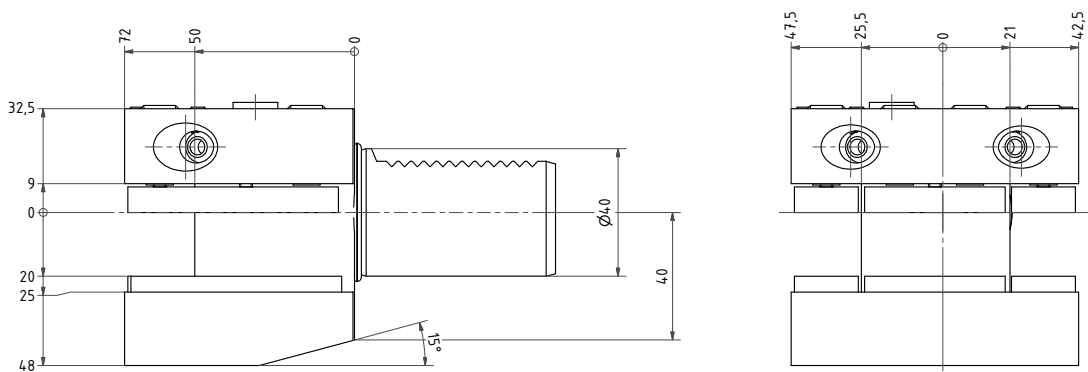


Nr./No.

5.4025NG200L2=107

Mehrfachhalter

Multi purpose holder

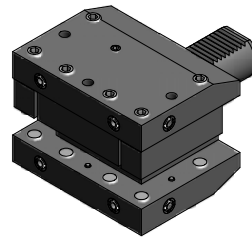
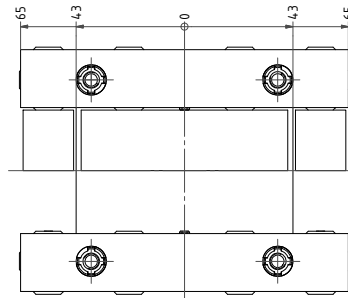
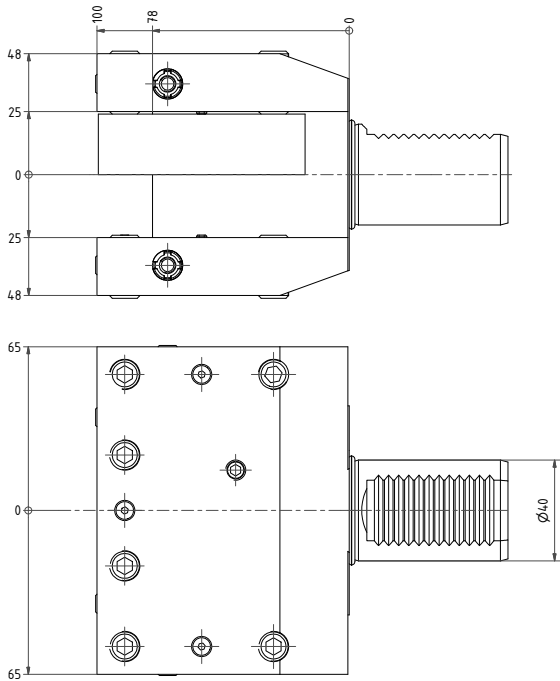


Nr./No.

15.4025/20

Mehrfach Drehhalter

Multi purpose holder



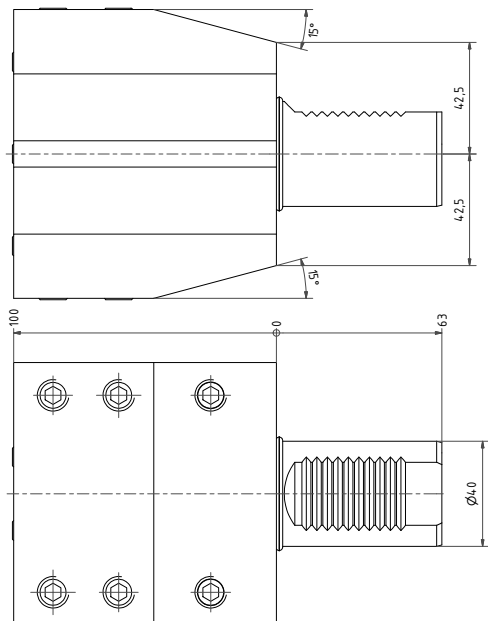
Nr./No.
15.4025CTX

**Rechts- / Linkslauf /
cw and ccw**

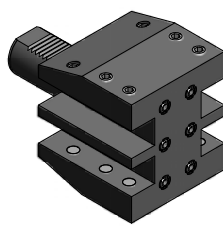
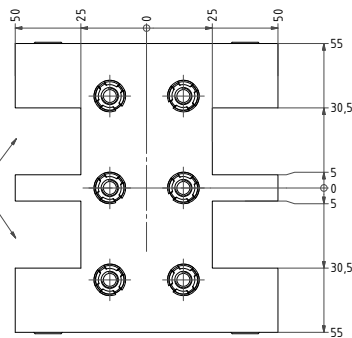
Mehrfach Drehhalter

Multi purpose holder

5



Nur mit 2-Dreh-
stahlhalter pro
Seite verwenden!

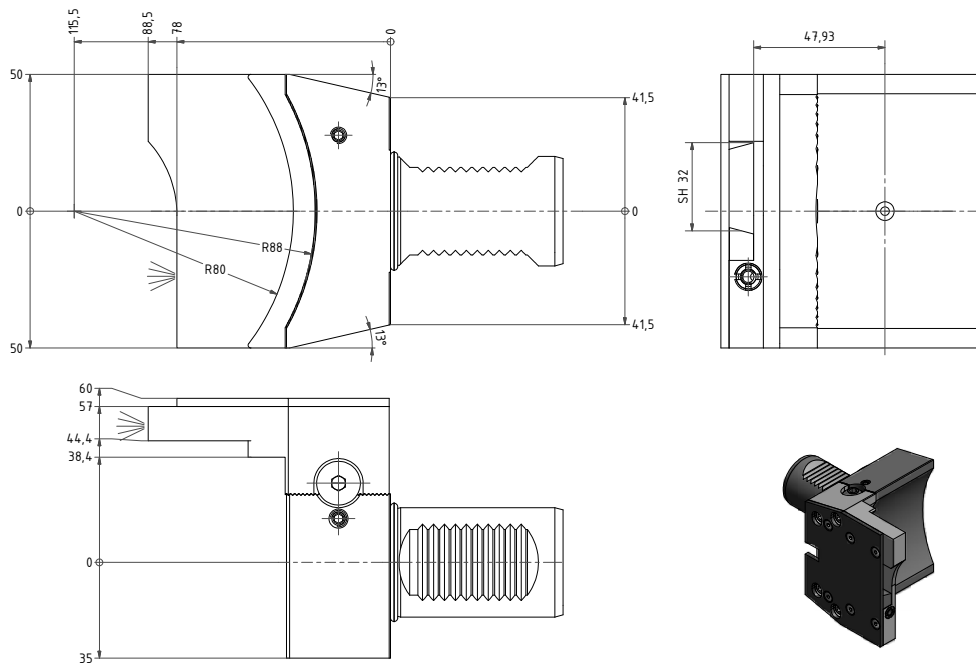


Nr./No.
15.4025QY

**Rechts- und Linkslauf / cw and ccw
Y-versetzt / Y-axis offset**

Abstechhalter

Infeed holder



Nr./No.

32.4032WT250RLÜK

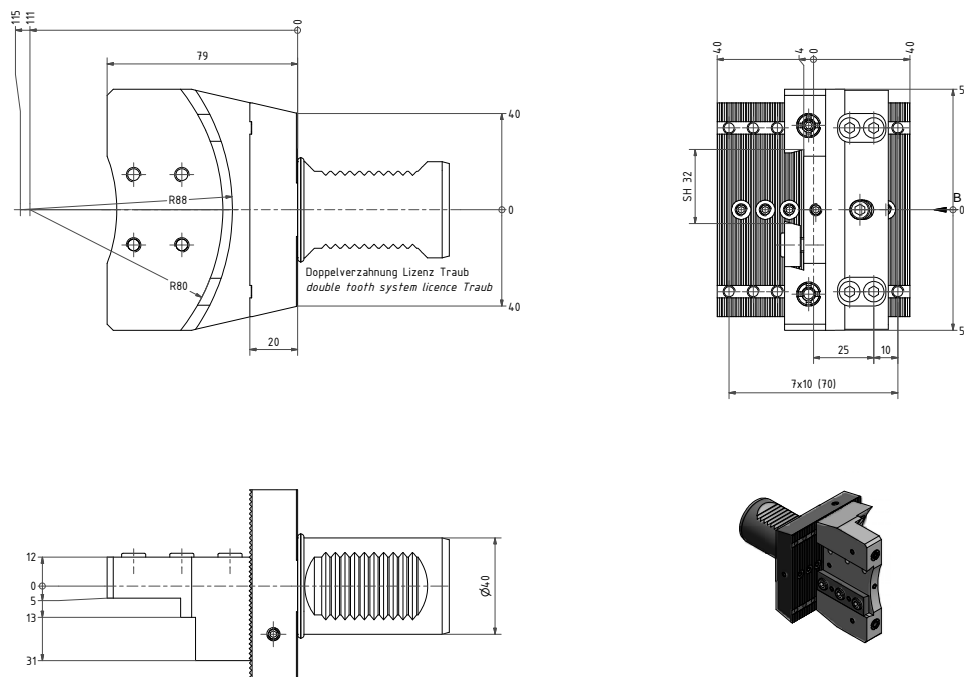
32.4032WT250RL

RLÜK wie gezeichnet / as shown

RL Schneide spiegelbildlich / cutting edge reversed

Abstechhalter

Infeed holder



Nr./No.

32.4032FLEXRLÜK

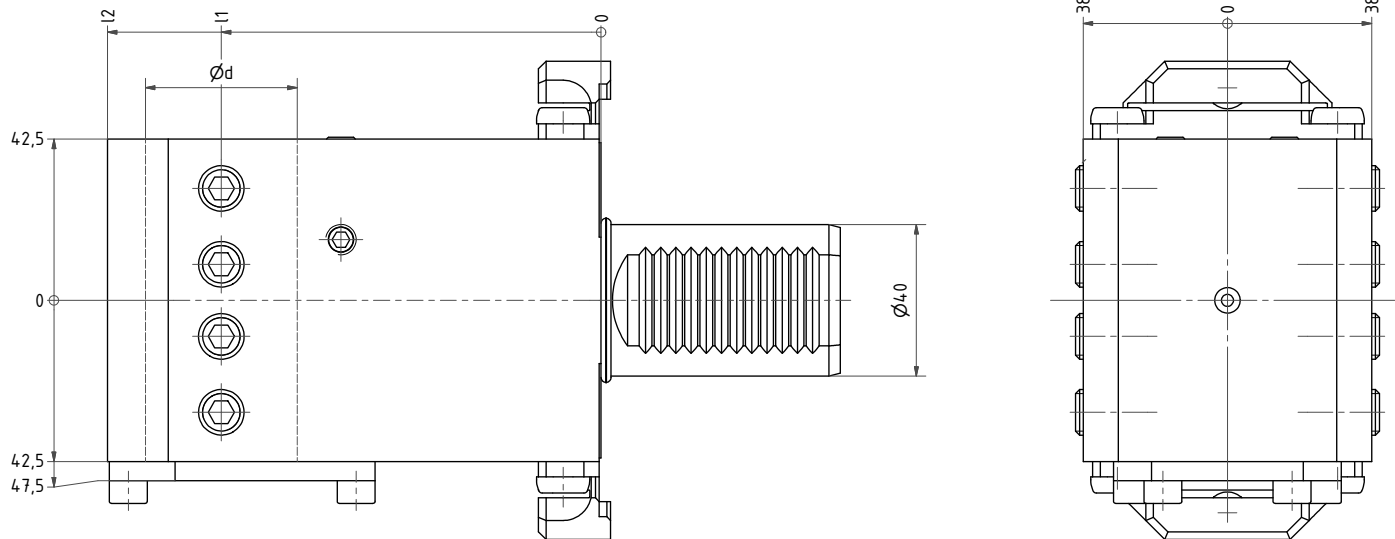
32.4032FLEXRL

RLÜK wie gezeichnet / as shown

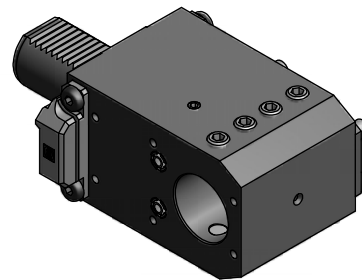
RL Schneide spiegelbildlich / cutting edge reversed

*Kombihalter
Für Bohrstangen und Vollbohrer*

*Combi holder
For boring bars and U-drills*



Dargestellt / Shown: Trifix®



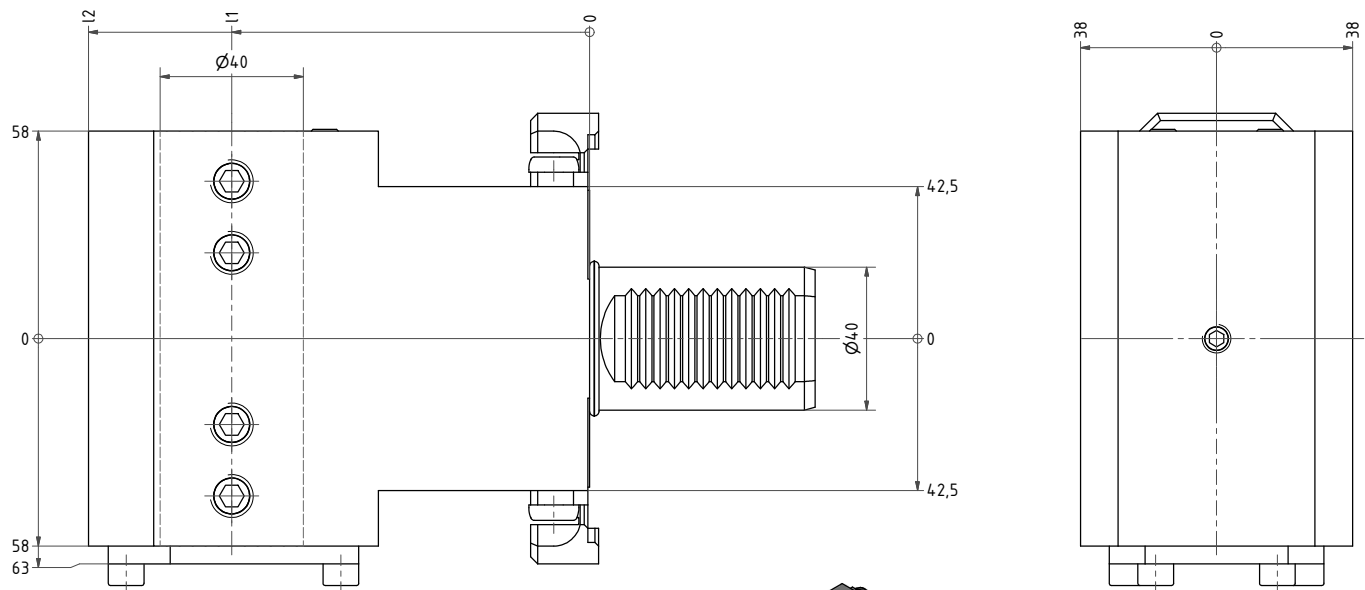
5

Nr. / No.	Ød	l1	l2	Kühlung / coolant	Ausrichtungssystem / Adjusting system
17.4025CTX	25	100	130	Int / Ext	Pin
17.4025CTXTF	25	100	130	Int / Ext	Trifix®
17.4032CTX	32	100	130	Int / Ext	Pin
17.4032CTXTF	32	100	130	Int / Ext	Trifix®
17.4040CTX	40	100	130	Int / Ext	Pin
17.4040CTXTF	40	100	130	Int / Ext	Trifix®
17.4025LCTX	25	120	150	Int / Ext	Pin
17.4025LCTXTF	25	120	150	Int / Ext	Trifix®
17.4032LCTX	32	120	150	Int / Ext	Pin
17.4032LCTXTF	32	120	150	Int / Ext	Trifix®
17.4040LCTX	40	120	150	Int / Ext	Pin
17.4040LCTXTF	40	120	150	Int / Ext	Trifix®

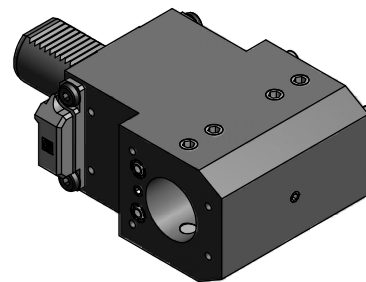
Andere Ø auf Anfrage verfügbar / additional Ø available on request

*Kombihalter
Für Bohrstangen und Vollbohrer*

*Combi holder
For boring bars and U-drills*



Dargestellt / Shown: Trifix®



Nr. / No.	Ød	I1	I2	Kühlung / coolant	Ausrichtungssystem / Adjusting system
17.4032DCTX	32	100	125	Int / Ext	Pin
17.4032DCTXTF	32	100	125	Int / Ext	Trifix®
17.4040DCTX	40	100	140	Int / Ext	Pin
17.4040DCTXTF	40	100	140	Int / Ext	Trifix®
17.4032LDCTX	32	120	145	Int / Ext	Pin
17.4032LDCTXTF	32	120	145	Int / Ext	Trifix®
17.4040LDCTX	40	120	152	Int / Ext	Pin
17.4040LDCTXTF	40	120	152	Int / Ext	Trifix®

Andere Ø auf Anfrage verfügbar / additional Ø available on request

Reduzierhülsen / Reducing sleeves Ø 40

28.4032S	Ø32	28.4012S	Ø12
28.4025S	Ø25	28.4010S	Ø10
28.4020S	Ø20	28.4008S	Ø 8
28.4016S	Ø16		

andere Ø auf Anfrage / other Ø on request

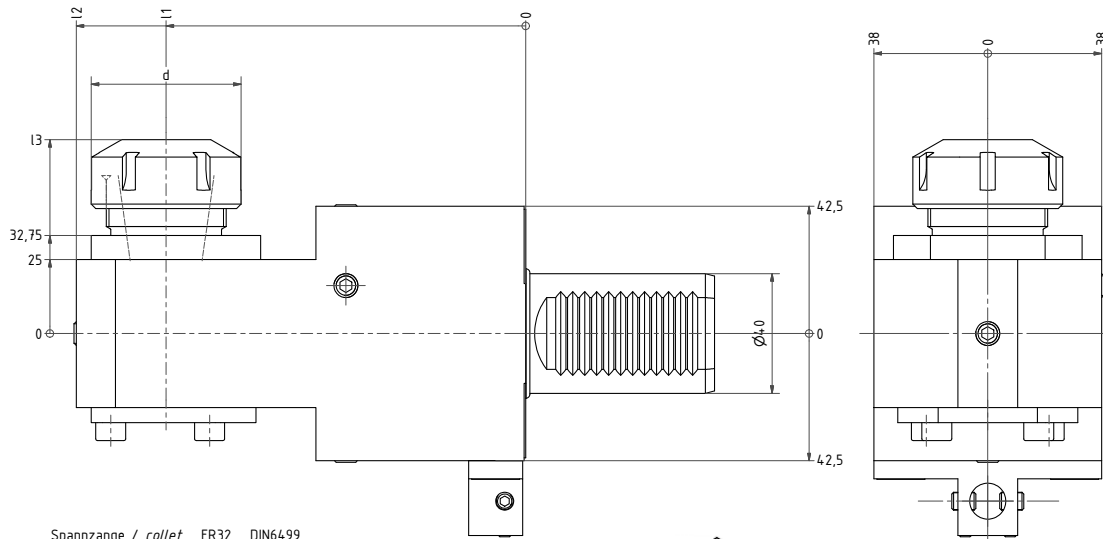
Reduzierhülsen / Reducing sleeves Ø 32

28.3225G200	Ø25	28.3210G200	Ø10
28.3220G200	Ø20	28.5008G200	Ø 8
28.3216G200	Ø16	28.5006G200	Ø 6
28.3212G200	Ø12		

andere Ø auf Anfrage / other Ø on request

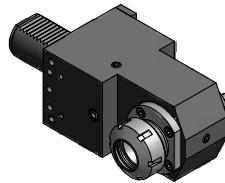
Spannzangenaufnahme

Collet chuck



Spannzange / collet ER32 DIN6499
Spannbereich / clamping range: 2,0 - 20,0

Gewindebohrzange / tapping collet
ET-1-32 M5-M12



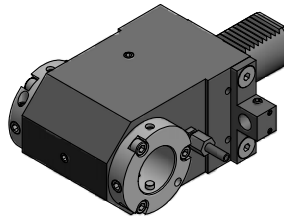
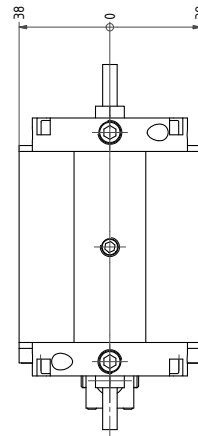
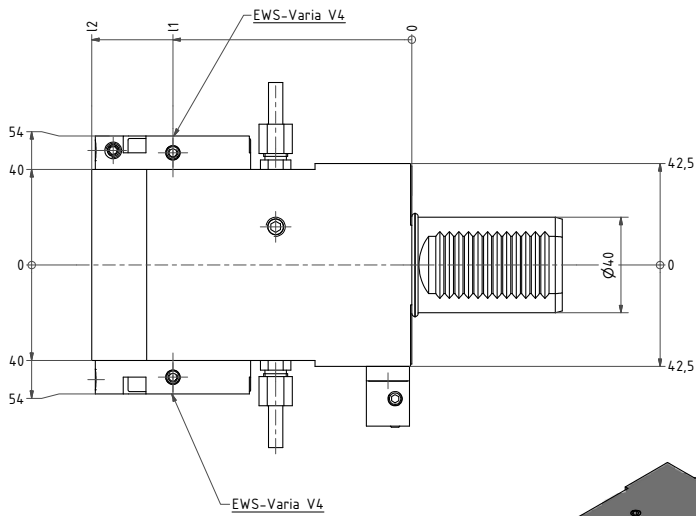
Ausführung L=links / design L =left hand
Ausführung R=rechts spiegelbildlich / design R=right hand reversed
Ausführung DCTX= doppelseitig / design DCTX=double sided

Dargestellt / Shown:
Pin

Nr. / No.	Spannzange / Collet	Ød	I1	I2	I3	Richtung/ Direction	Ausrichtungssystem / Adjusting system
31.4025CTXL	ER25	42	100	130	62	L	Pin
31.4025CTXLTF	ER25	42	100	130	62	L	Trifix®
31.4025CTXR	ER25	42	100	130	62	R	Pin
31.4025CTXRTF	ER25	42	100	130	62	R	Trifix®
31.4025DCTX	ER25	42	100	130	62	D	Pin
31.4025DCTXTF	ER25	42	100	130	62	D	Trifix®
31.4032CTXL	ER32	50	100	130	66	L	Pin
31.4032CTXLTF	ER32	50	100	130	66	L	Trifix®
31.4032CTXR	ER32	50	100	130	66	R	Pin
31.4032CTXRTF	ER32	50	100	130	66	R	Trifix®
31.4032DCTX	ER32	50	100	130	66	D	Pin
31.4032DCTXTF	ER32	50	100	130	66	D	Trifix®
31.4025LCTXL	ER25	42	120	150	62	L	Pin
31.4025LCTXLTF	ER25	42	120	150	62	L	Trifix®
31.4025LCTXR	ER25	42	120	150	62	R	Pin
31.4025LCTXRTF	ER25	42	120	150	62	R	Trifix®
31.4025LDCTX	ER25	42	120	150	62	D	Pin
31.4025LDCTXTF	ER25	42	120	150	62	D	Trifix®
31.4032LCTXL	ER32	50	120	150	66	L	Pin
31.4032LCTXLTF	ER32	50	120	150	66	L	Trifix®
31.4032LCTXR	ER32	50	120	150	66	R	Pin
31.4032LCTXRTF	ER32	50	120	150	66	R	Trifix®
31.4032LDCTX	ER32	50	120	150	66	D	Pin
31.4032LDCTXTF	ER32	50	120	150	66	D	Trifix®

Varia-Adapter

Varia-adaptor



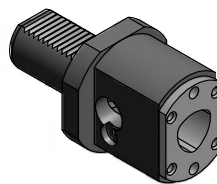
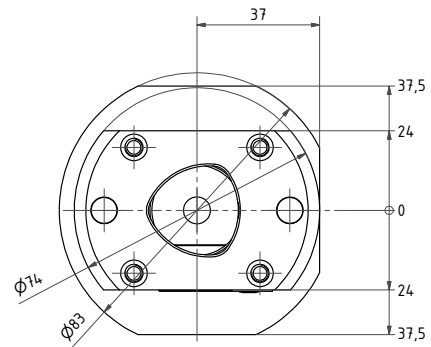
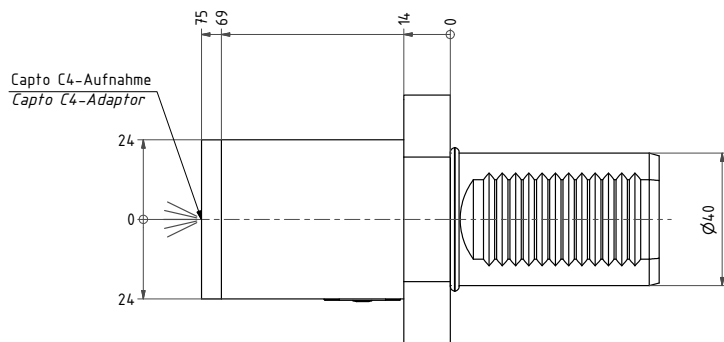
Dargestellt / Shown: Pin

Doppelseitig / double sided

Nr. / No.	EWS Varia	I1	I2	Ausrichtungssystem / Adjusting system
17.40V4DCTX	V4	100	134	Pin
17.40V4DCTXTF	V4	100	134	Trifix®
17.40V4LDCTX	V4	120	154	Pin
17.40V4LDCTXTF	V4	120	154	Trifix®

Capto Adapter C4

Capto Adaptor C4



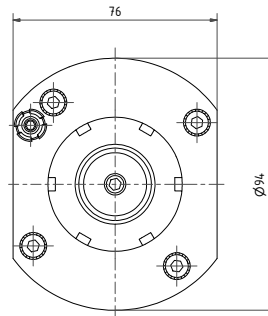
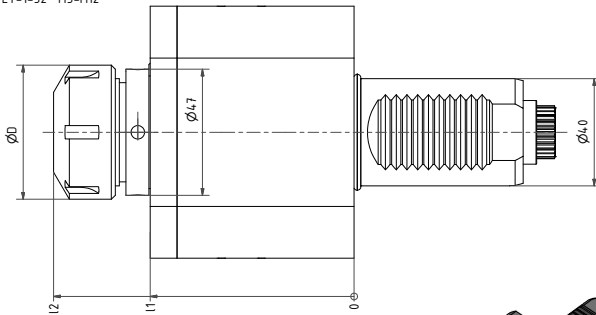
Nr./No.
19.40C4L75L

Axial Bohr- und Fräskopf

Axial drilling and milling head

Spannzange / collet ER32 DIN6499
Spannbereich / clamping range: 2,0 - 20,0

Gewindebohrzange / tapping collet
ET-1-32 M5-M12



High speed = HSD



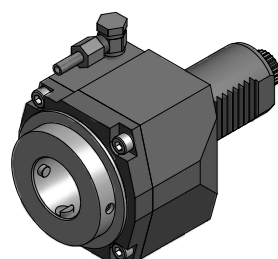
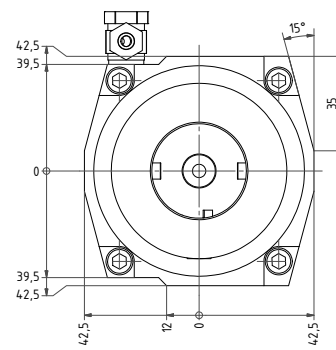
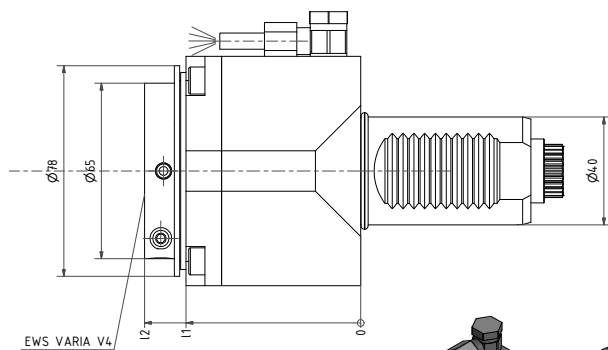
**Spannzangenaufnahme /
Collet chuck**

Nr. / No.	Spannzange / Collet	ØD	I1	I2	n _{max} 1/min	i	T _{max} Nm	Kühlung / coolant
40.4025CTX	ER25 (2-16)	42	76	110	6000	1:1	50	Ext
40.4025KCTX	ER25 (2-16)	42	60	94	6000	1:1	50	Ext
40.4025CTXIK	ER25 (2-16)	42	76	110	6000	1:1	50	Int / Ext
40.4032CTX	ER32 (3-20)	50	76	111	6000	1:1	50	Ext
40.4032KCTX	ER32 (3-20)	50	60	95	6000	1:1	50	Ext
40.4032CTXIK	ER32 (3-20)	50	76	111	6000	1:1	50	Int / Ext
40.4032CTXIKHSD	ER32 (3-20)	50	76	105	10000	1:1	50	Int / Ext

Axial Bohr- und Fräskopf

Axial drilling and milling head

5

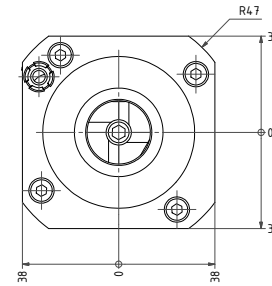
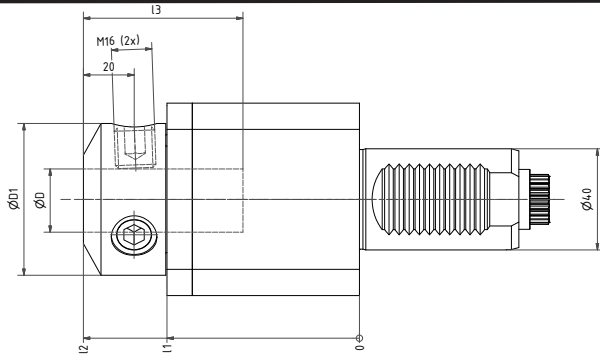


Varia 4

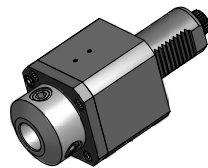
Nr. / No.	Varia	I1	I2	n _{max} 1/min	i	T _{max} Nm	Kühlung / coolant
40.40V4CTX	V4	64,7	80	6000	1:1	50	Ext
40.40V4CTXIK	V4	64,7	80	6000	1:1	50	Int / Ext

Axial Bohr- und Fräskopf

Axial drilling and milling head



**Highspeed auf Anfrage /
High speed on request**



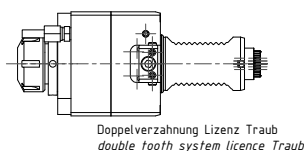
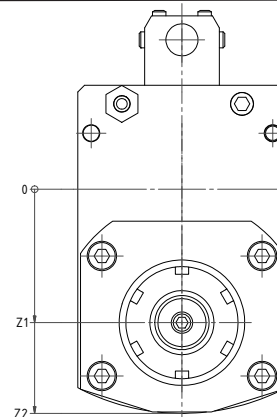
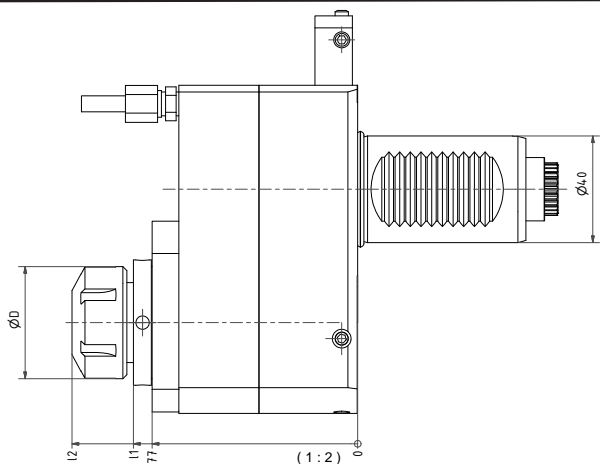
**Weldon /
Whistle notch**

Nr. / No.	ØD	ØD1	I1	I2	I3	n _{max} 1/min	i	T _{max} Nm	Kühlung / coolant
40.4025WNCTX	25	60	76	109	63	6000	1:1	50	Ext
40.4025WNCTXIK	25	60	76	109	63	6000	1:1	50	Int / Ext
40.4020WNCTX	20	52	66	101	59	6000	1:1	50	Ext
40.4020WNCTXIK	20	52	66	101	59	6000	1:1	50	Int / Ext
40.4016WNCTX	16	48	66	101	59	6000	1:1	50	Ext
40.4016WNCTXIK	16	48	66	101	59	6000	1:1	50	Int / Ext

Weitere Ø verfügbar /
additional Ø available

Axial Bohr- und Fräskopf

Axial drilling and milling head



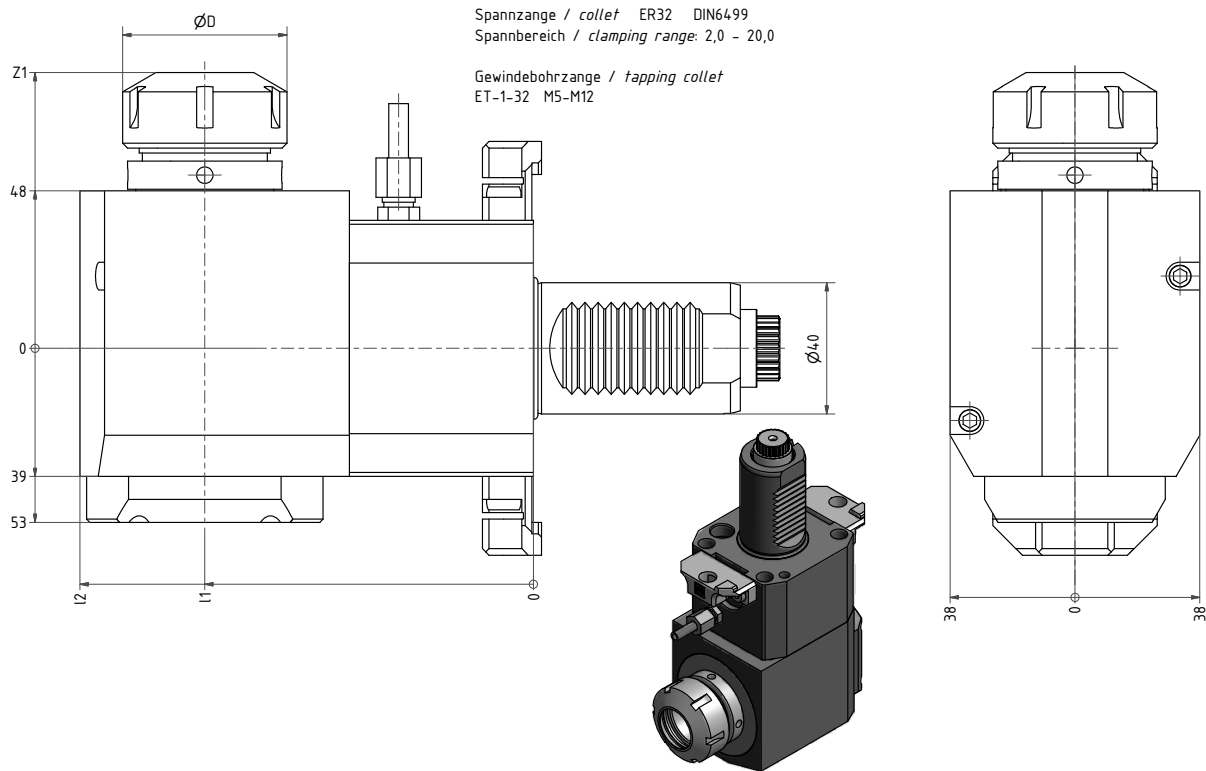
Dargestellt / shown: Pin

achsenversetzt / offset

Nr. / No.	Spannzange / Collet	ØD	I1	I2	Z1	n _{max} 1/min	i	T _{max} Nm	Kühlung / coolant	Ausrichtsystem / adjusting system
50.4025CTXRLI1	ER25 (2-16)	42	77	105,5	50	10000	1:2	25	Ext	Pin
50.4025CTXRLIK1	ER25 (2-16)	42	77	105,5	50	10000	1:2	25	Int / Ext	Pin
50.4025CTXRLI13	ER25 (2-16)	42	70	82	50	15000	1:3	15	Ext	Pin
50.4032CTXRLI2	ER32 (3-20)	50	96,5	124	60	3000	2:1	80	Ext	Pin
50.4032CTXRLI3	ER32 (3-20)	50	98	138	55,5	2000	3:1	120	Ext	Pin

Radial Bohr- und Fräskopf

Radial drilling and milling head



Dargestellt / Shown: Trifix® links / left hand

Spannzangenaufnahme / Collet chuck

CTX L= links / left hand
 CTX R= rechts / right hand
 CTX RL= doppelverzahnt / double seration
 Auch mit l1= 120 verfügbar / Also with l1= 120 available

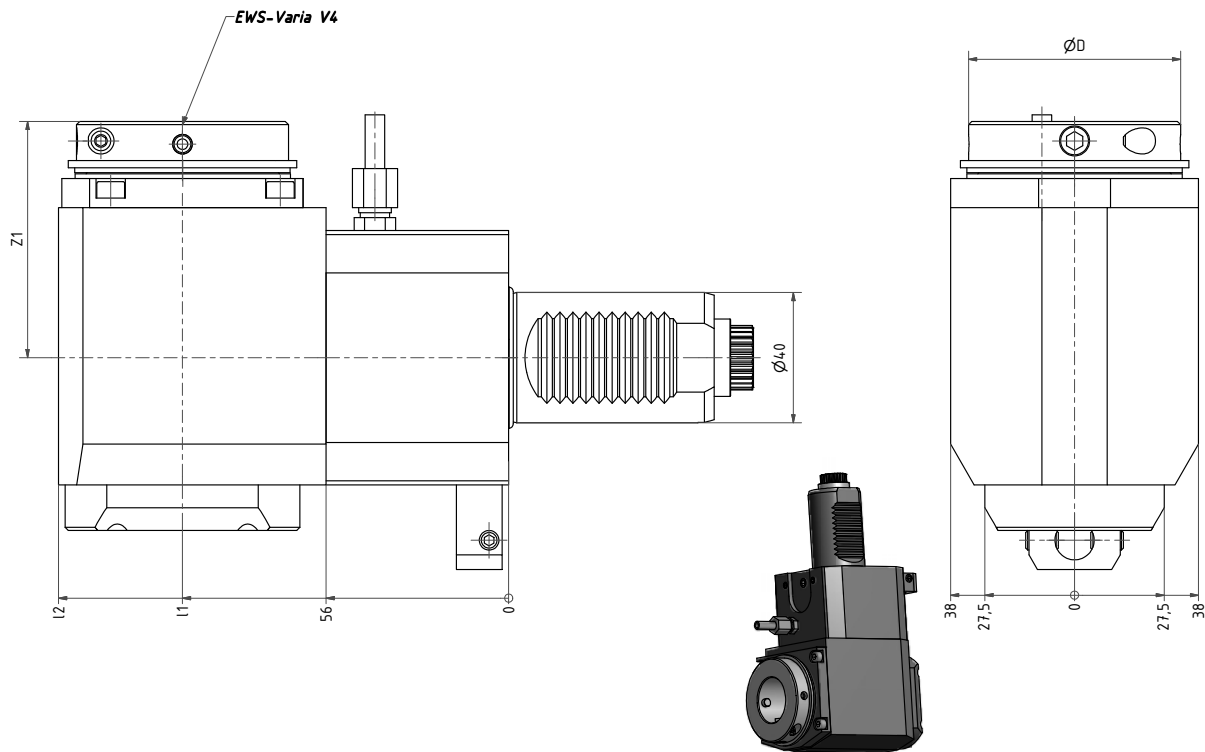
High speed = HSD

Nr. / No.	Spannzange/ Collet	ØD	l1	l2	Z1	N _{max} 1/min	i	T _{max} Nm	Kühlung/ coolant	Ausrichtungssys./ Adjusting system
60.4032CTXL	ER32 (3-20)	50	100	138	85	6000	1:1	50	Ext	Pin
60.4032CTXLTF	ER32 (3-20)	50	100	138	85	6000	1:1	50	Ext	Trifix®
60.4032CTXLTFHSD	ER32 (3-20)	50	100	138	85	10000	1:1	50	Ext	Trifix®
60.4032CTXR	ER32 (3-20)	50	100	138	85	6000	1:1	50	Ext	Pin
60.4032CTXRTF	ER32 (3-20)	50	100	138	85	6000	1:1	50	Ext	Trifix®
60.4032CTXRTFHSD	ER32 (3-20)	50	100	138	85	10000	1:1	50	Ext	Trifix®
60.4032CTXRL	ER32 (3-20)	50	100	138	85	6000	1:1	50	Ext	Pin
60.4025CTXLI1	ER25 (2-16)	42	100	138	84	12000	1:2	50	Ext	Pin
60.4025CTXLI1TF	ER25 (2-16)	42	100	138	84	12000	1:2	50	Ext	Trifix®
60.4025CTXRI1	ER25 (2-16)	42	100	138	84	12000	1:2	50	Ext	Pin
60.4025CTXRI1TF	ER25 (2-16)	42	100	138	84	12000	1:2	50	Ext	Trifix®
60.4025CTXRLI1	ER25 (2-16)	42	100	138	84	12000	1:2	50	Ext	Pin
60.4032CTXLI2	ER32 (3-20)	50	100	138	93	3000	2:1	50	Ext	Pin
60.4032CTXLI2TF	ER32 (3-20)	50	100	138	93	3000	2:1	50	Ext	Trifix®
60.4032CTXRI2	ER32 (3-20)	50	100	138	93	3000	2:1	50	Ext	Pin
60.4032CTXRI2TF	ER32 (3-20)	50	100	138	93	3000	2:1	50	Ext	Trifix®
60.4032CTXRLI2	ER32 (3-20)	50	100	138	93	3000	2:1	50	Ext	Pin

Auch mit Innenkühlung verfügbar / also available with internal coolant

Radial Bohr- und Fräskopf

Radial drilling and milling head



Dargestellt / Shown:
Trifix® links / left hand

EWS-Varia

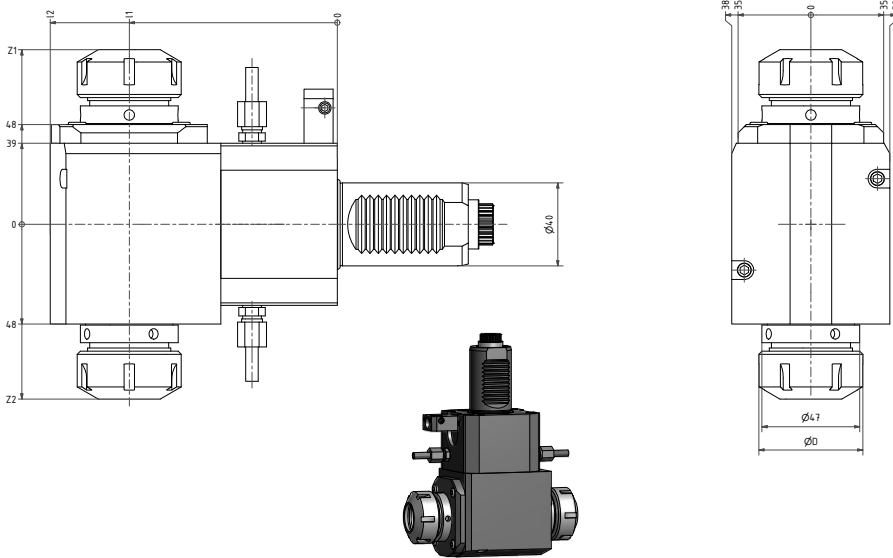
CTX L= links / left hand
CTX R= rechts / right hand
CTX RL= doppelverzahnt / double seration
Auch mit l1= 120 verfügbar / Also with l1= 120 available

Nr. / No.	EWS-Varia	ØD	l1	l2	Z1	N _{max} 1/min	i	T _{max} Nm	Kühlung/ coolant	Ausrichtungssys./ Adjusting system
60.40V4CTXL	V4	65	100	138	72,5	6000	1:1	50	Ext	Pin
60.40V4CTXLTF	V4	65	100	138	72,5	6000	1:1	50	Ext	Trifix®
60.40V4CTXR	V4	65	100	138	72,5	6000	1:1	50	Ext	Pin
60.40V4CTXRTF	V4	65	100	138	72,5	6000	1:1	50	Ext	Trifix®
60.40V4CTXRL	V4	65	100	138	72,5	6000	1:1	50	Ext	Pin
60.40V4CTXLI1	V4	65	100	138	78	12000	1:2	25	Ext	Pin
60.40V4CTXLI1TF	V4	65	100	138	78	12000	1:2	25	Ext	Trifix®
60.40V4CTXRI1	V4	65	100	138	78	12000	1:2	25	Ext	Pin
60.40V4CTXRI1TF	V4	65	100	138	78	12000	1:2	25	Ext	Trifix®
60.40V4CTXRLI1	V4	65	100	138	78	12000	1:2	25	Ext	Pin
60.40V4CTXLI2	V4	65	100	138	72,5	3000	2:1	80	Ext	Pin
60.40V4CTXLI2TF	V4	65	100	138	72,5	3000	2:1	80	Ext	Trifix®
60.40V4CTXRI2	V4	65	100	138	72,5	3000	2:1	80	Ext	Pin
60.40V4CTXRI2TF	V4	65	100	138	72,5	3000	2:1	80	Ext	Trifix®
60.40V4CTXRLI2	V4	65	100	138	72,5	3000	2:1	80	Ext	Pin

Auch mit Innenkühlung verfügbar / also available with internal coolant

Radial Bohr- und Fräskopf

Radial drilling and milling head



Dargestellt / Shown: Trifix®

**doppelseitig /
double sided**

Auch mit I1= 120 verfügbar / Also with I1= 120 available

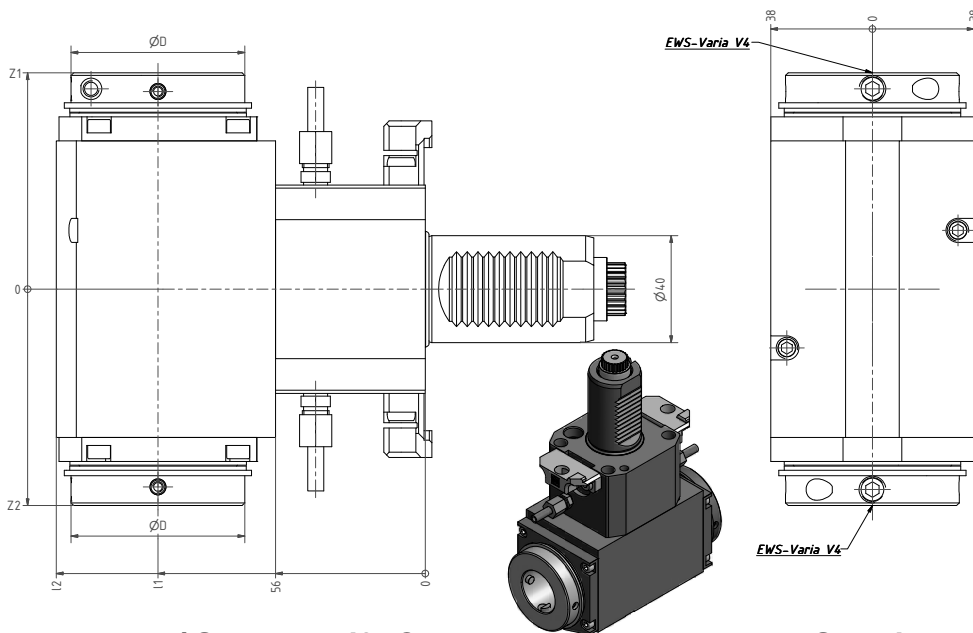
Nr. / No.	Spannzange / Collet ØD I1 I2 Z1/Z2	n_{max} 1/min	i	T_{max} Nm	Kühlung / coolant	Ausrichtsystem / adjusting system
60.4032DCTX	ER32 (3-20) 50 100 138 85/85	6000	1:1	50	Ext	Pin
60.4032DCTXTF	ER32 (3-20) 50 100 138 85/85	6000	1:1	50	Ext	Trifix®

Auch mit Innenkühlung verfügbar / also available with internal coolant

Radial Bohr- und Fräskopf

Radial drilling and milling head

5



Dargestellt / Shown: Trifix®

**EWS-Varia doppelseitig /
EWS-Varia double sided**

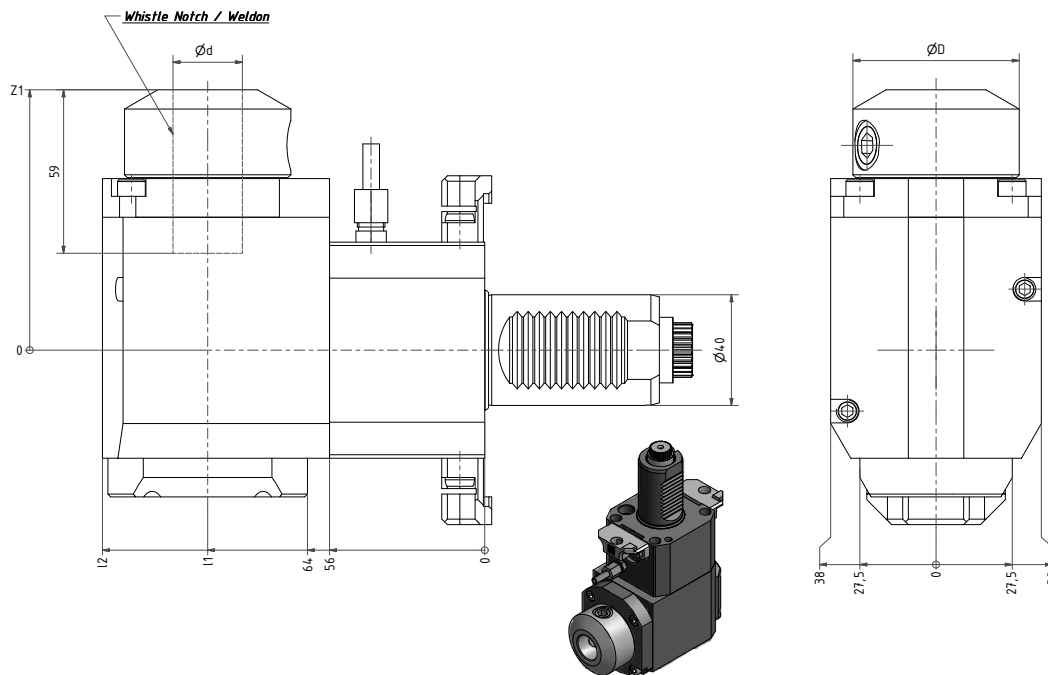
Auch mit I1= 120 verfügbar / Also with I1= 120 available

Nr. / No.	EWS-Varia ØD I1 I2 Z1/Z2	n_{max} 1/min	i	T_{max} Nm	Kühlung / coolant	Ausrichtsystem / adjusting system
60.40V4DCTX	V4 65 100 138 81/81	6000	1:1	50	Ext	Pin
60.40V4DCTXTF	V4 65 100 138 81/81	6000	1:1	50	Ext	Trifix®

Auch mit Innenkühlung verfügbar / also available with internal coolant

Radial Bohr- und Fräskopf

Radial drilling and milling head



Dargestellt / Shown:
Trifix® links / left hand

Weldon /
Whistle notch

CTX L= links / left hand
CTX R= rechts / right hand
CTX RL= doppelverzahnt / double seration
Auch mit I1= 120 verfügbar / Also with I1= 120 available

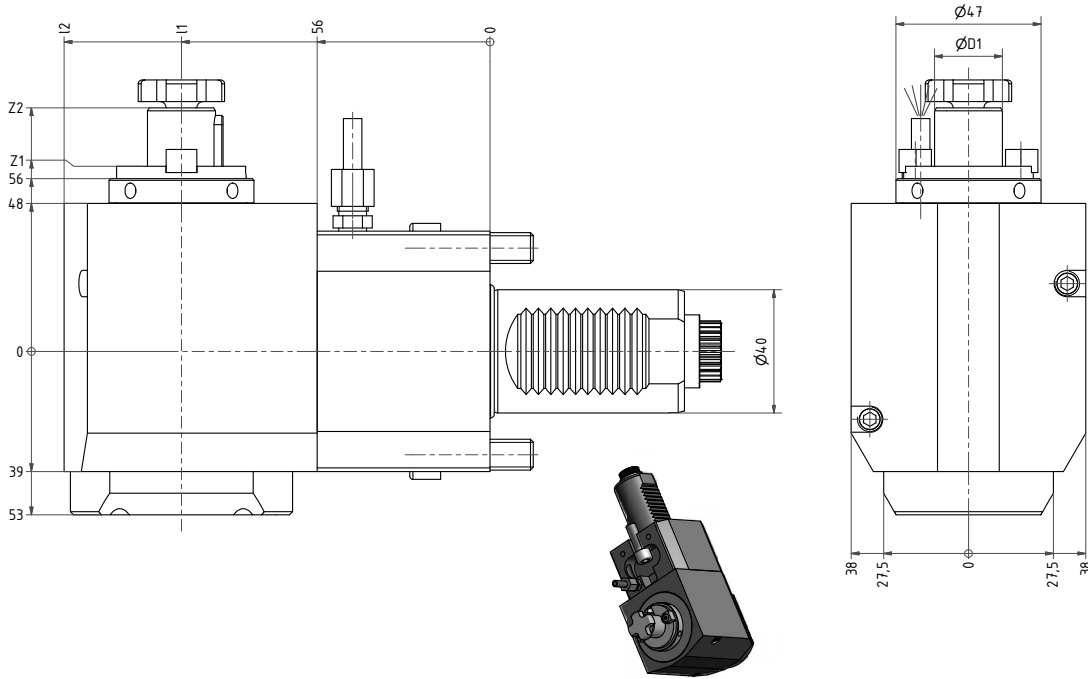
Highspeed auf Anfrage /
High speed on request

Nr. / No.	Ød	ØD	I1	I2	Z1	n _{max} 1/min	i	T _{max} Nm	Kühlung / coolant	Ausrichtsystem / adjusting system
60.4025WNCTXL	25	60	100	138	94	6000	1:1	50	Ext	Pin
60.4025WNCTXLTF	25	60	100	138	94	6000	1:1	50	Ext	Trifix®
60.4025WNCTXR	25	60	100	138	94	6000	1:1	50	Ext	Pin
60.4025WNCTXRTF	25	60	100	138	94	6000	1:1	50	Ext	Trifix®
60.4025WNCTXRL	25	60	100	138	94	6000	1:1	50	Ext	Pin
60.4020WNCTXL	20	52	100	138	87	6000	1:1	50	Ext	Pin
60.4020WNCTXLTF	20	52	100	138	87	6000	1:1	50	Ext	Trifix®
60.4020WNCTXR	20	52	100	138	87	6000	1:1	50	Ext	Pin
60.4020WNCTXRTF	20	52	100	138	87	6000	1:1	50	Ext	Trifix®
60.4020WNCTXRL	20	52	100	138	87	6000	1:1	50	Ext	Pin

Auch mit Innenkühlung verfügbar / also available with internal coolant

Radial Fräskopf

Radial milling head



Dargestellt / Shown:
Trifix® links / left hand

CTX L= links / left hand
CTX R= rechts / right hand
CTX RL= doppelverzahnt / double seration

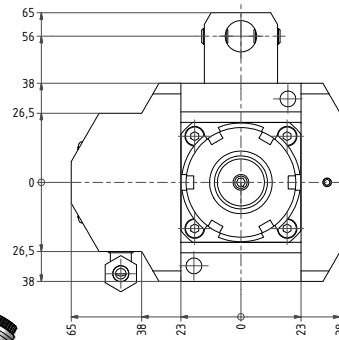
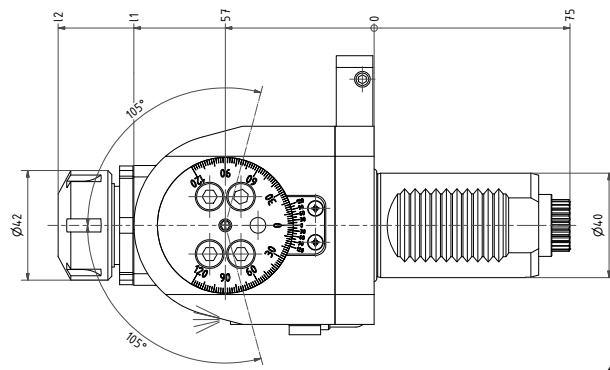
5

Nr. / No.	ØD1	I1	I2	Z1	Z2	n _{max} 1/min	i	T _{max} Nm	Kühlung / coolant	Ausrichtsystem / adjusting system
62.4022CTXL	22	100	138	67	86	5000	1:1	50	Ext	Pin
62.4022CTXLTF	22	100	138	67	86	5000	1:1	50	Ext	Trifix®
62.4022CTXR	22	100	138	67	86	5000	1:1	50	Ext	Pin
62.4022CTXRTF	22	100	138	67	86	5000	1:1	50	Ext	Trifix®
62.4022CTXRL	22	100	138	67	86	5000	1:1	50	Ext	Pin
62.4022CTXLI2	22	100	138	68	87	3000	2:1	80	Ext	Pin
62.4022CTXLI2TF	22	100	138	68	87	3000	2:1	80	Ext	Trifix®
62.4022CTXRI2	22	100	138	68	87	3000	2:1	80	Ext	Pin
62.4022CTXRI2TF	22	100	138	68	87	3000	2:1	80	Ext	Trifix®
62.4022CTXRLI2	22	100	138	68	87	3000	2:1	80	Ext	Pin

Andere Fräsdorn Ø verfügbar/ other arbor Ø available

Schwenkkopf

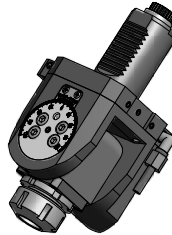
Swivel head



Schwenkbereich $\pm 105^\circ$
Swivel area $\pm 105^\circ$

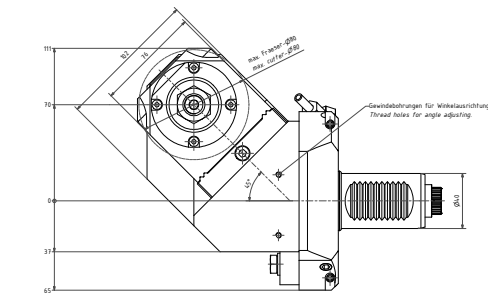
Spannzange / collet ER25 DIN6499
Spannbereich / clamping range: 1,0 - 16,0

Gewindebohrzange / tapping collet
ET-1-25 M3-M10

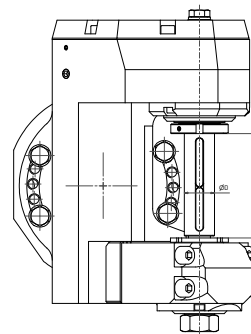
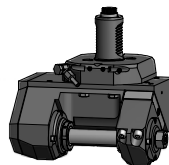
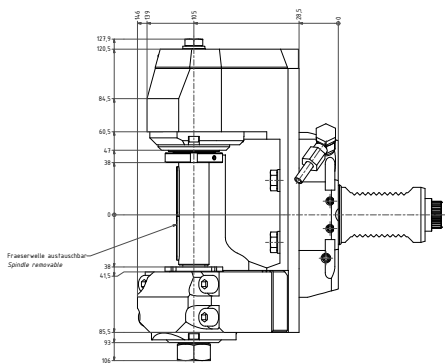


Nr. / No.	Spannzange / Collet	I1	I2	n_{max} 1/min	i	T_{max} Nm	Kühlung / coolant	Ausrichtungssystem / adjusting system
63.4025CTX	ER25 (2-16)	57	123	6000	1:1	20	Ext	Pin
63.4025CTXIK	ER25 (2-16)	69	136	6000	1:1	20	Int / Ext	Pin
63.4025LCTX	ER25 (2-16)	87	153	6000	1:1	20	Ext	Pin
63.4025LCTXIKX90	ER25 (2-16)	90	157	6000	1:1	20	Int / Ext	Pin

Scheibenfräskopf / Modulfräser Saw milling head / gear hobber



**Winkeleinstellbar /
angle adjustable**

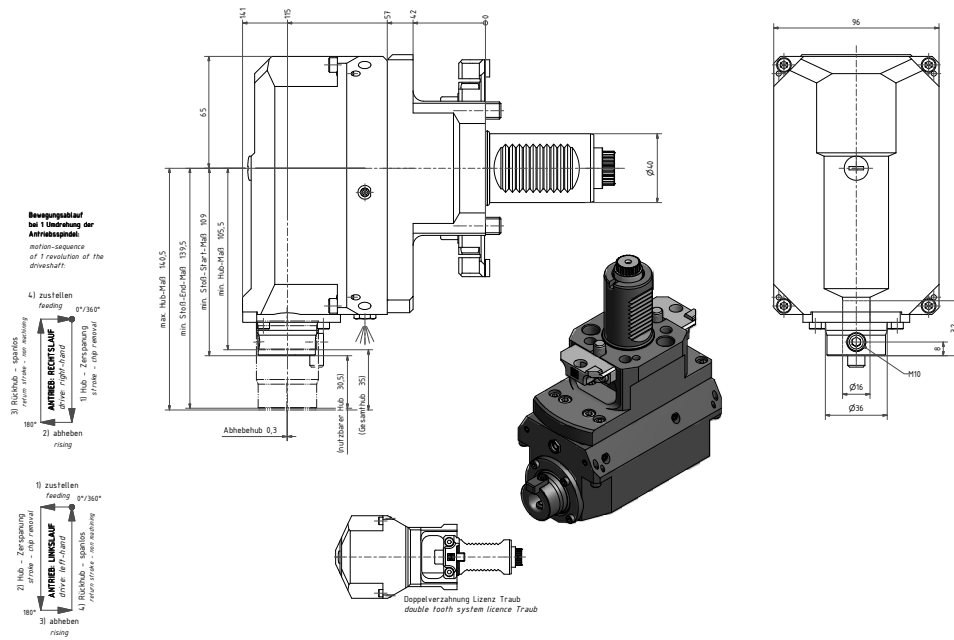


Nr. / No.	$\varnothing D$	n_{max} 1/min	i	T_{max} Nm	Kühlung / coolant	Ausrichtungssystem / adjusting system
64.4016CTXRLI2TKWZ70MB75	16	3000	2:1	100	Ext	Pin
64.4022CTXRLI2TKWZ70MB75	22	3000	2:1	100	Ext	Pin
64.4027CTXRLI2TKWZ70MB75	27	3000	2:1	100	Ext	Pin

Auch ohne Winkeleinstellbarkeit lieferbar / also without angle adjustment available

Nutstoßwerkzeug

Push slotter

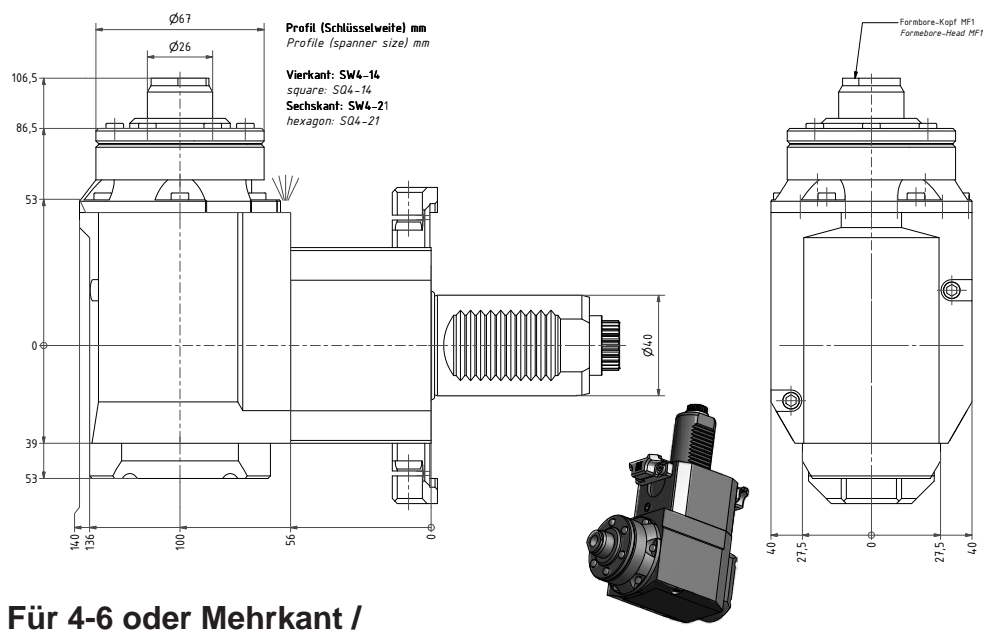


Nr. / No.	Ausrichtsystem / adjusting system
69.4016WNCTXRLX115	Pin
69.4016WNCTXRLTFX115	Trifix®

Dargestellt / shown:
Trifix®

Multiform

Multiform



Für 4-6 oder Mehrkant /
For 4-6 or multi sided

Nr. / No.	Ausrichtsystem / adjusting system
60.40MF1CTXL	Pin
60.40MF1CTXLTF	Trifix®

Dargestellt / shown:
Trifix®



EWS . ProLine

Um die Produktivitätspotentiale der neuen Maschinengeneration nutzen zu können bedarf es innovativer Werkzeugaufnahmesysteme. Hierbei geht es nicht nur um angetriebene Werkzeuge, auch im statischen Sektor gibt es signifikante Verbesserungsmöglichkeiten. Mit dem Innovationspaket ProLine setzt EWS neue Maßstäbe in punkto Stabilität und Prozessoptimierung. Durch die Quatro-Verschraubungen am Revolver werden Schwingungsamplituden geglättet und ermöglichen somit deutlich höhere Schnittwerte. Der Grenzbereich der Maschine wird nach oben verschoben und das Werkzeugsystem folgt dem Leistungspotenzial der Produktionszelle. Es können Oberflächengüten und Zustelltiefen erreicht werden, die bisher als unmöglich galten.

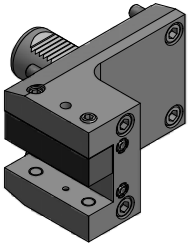
EWS ProLine – Precision meets Motion.

In order to tap into the efficiency potential of the next generation of machines, a new line of tool holders is required. With significant opportunities for improvement emerging for driven and static tooling, EWS has the solution. With the innovative package ProLine EWS is setting new standards for stability and process optimization. Through quad-screws on the turret the oscillation amplitude is smoothed out allowing for considerably higher cutting data. The limits of the machine will be increased enabling the tool system to reach its full potential on the production line. Surface finish and feed rates, once considered impossible, can now be reached.

EWS ProLine – Precision meets Motion.

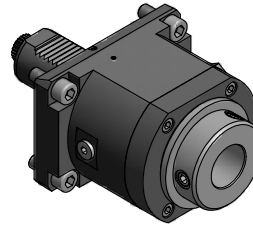


Inhaltsverzeichnis / Contents : **ProLine**



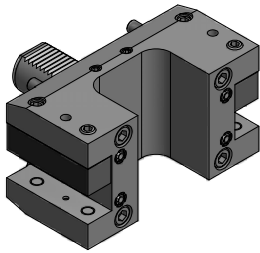
**Außendrehhalter /
OD-holder**

5.100



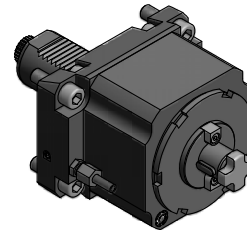
**Axial Bohr- und
Fräskopf /
Axial drilling and
milling head**

5.102 - 5.103



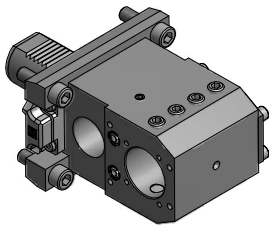
**Doppel-
Außendrehhalter /
Double OD-holder**

5.100



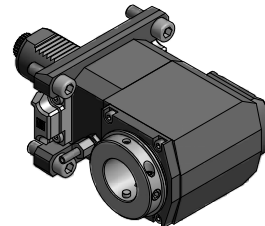
**Axial Fräskopf /
Axial milling head**

5.104



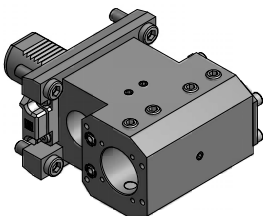
**Kombihalter /
Combi holder**

5.101



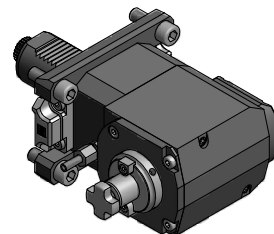
**Radial Bohr- und
Fräskopf /
Radial drilling and
milling head**

5.104 - 5.107



**Kombihalter
doppelseitig /
Combi holder
double sided**

5.101



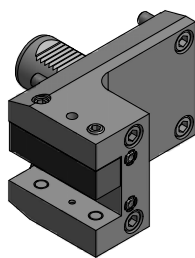
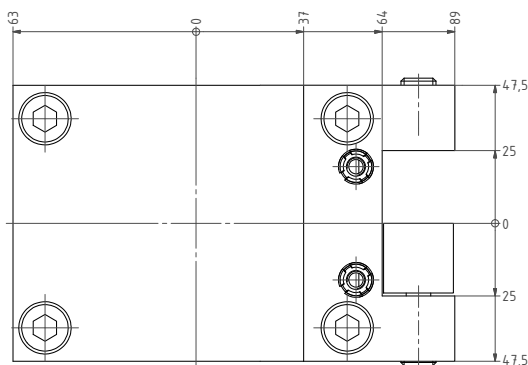
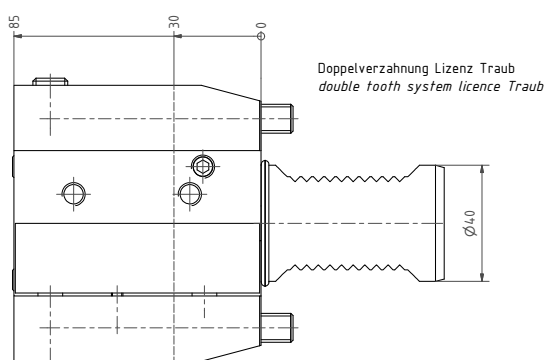
**Radial Fräskopf /
Radial milling head**

5.108



Außendrehhalter
ProLine

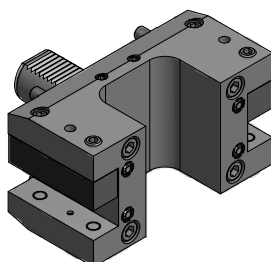
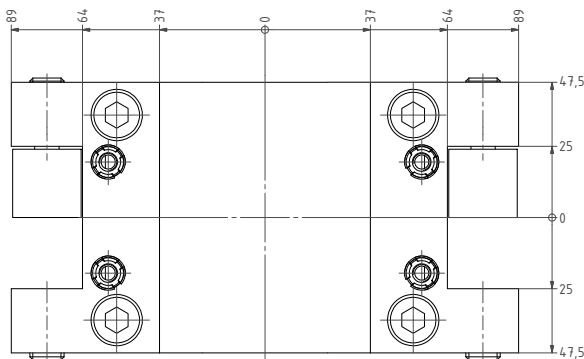
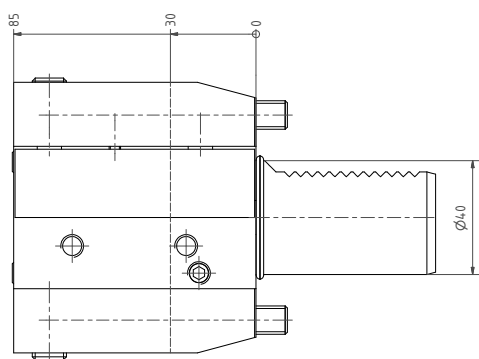
OD-holder
ProLine



Nr./No.
4.4025RL-PL

Doppel-Außendrehhalter
ProLine

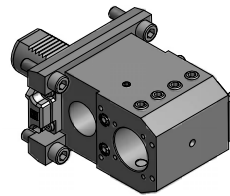
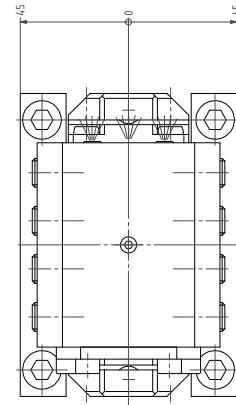
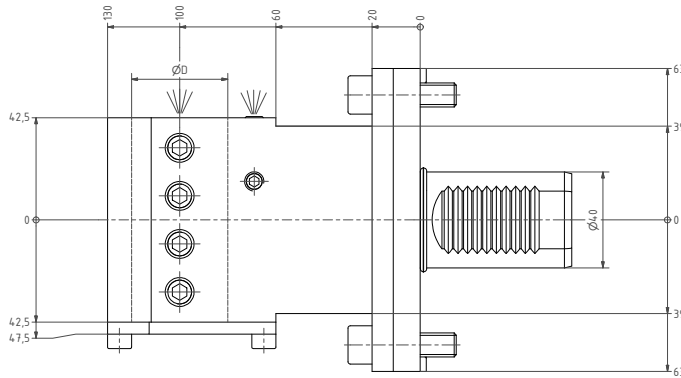
Double OD-holder
ProLine



Nr./No.
15.4025-PL

*Kombihalter
Für Bohrstangen und Vollbohrer*
ProLine

*Combi holder
For boring bars and U-drills*
ProLine

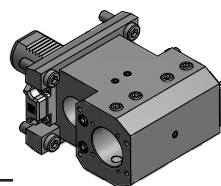
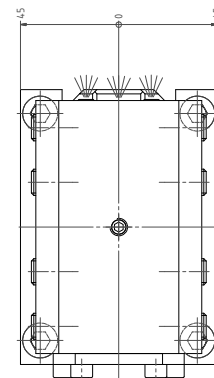
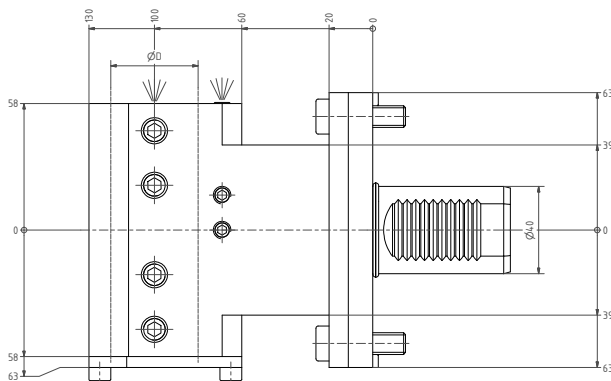


Nr. / No.	ØD	Ausrichtsystem / adjusting system
17.4032CTXTF-PL	32	Trifix®
17.4040CTXTF-PL	40	Trifix®

Weitere Ø auf Anfrage / Further Ø on request

*Kombihalter doppelseitig
Für Bohrstangen und Vollbohrer*
ProLine

*Combi holder double sided
For boring bars and U-drills*
ProLine

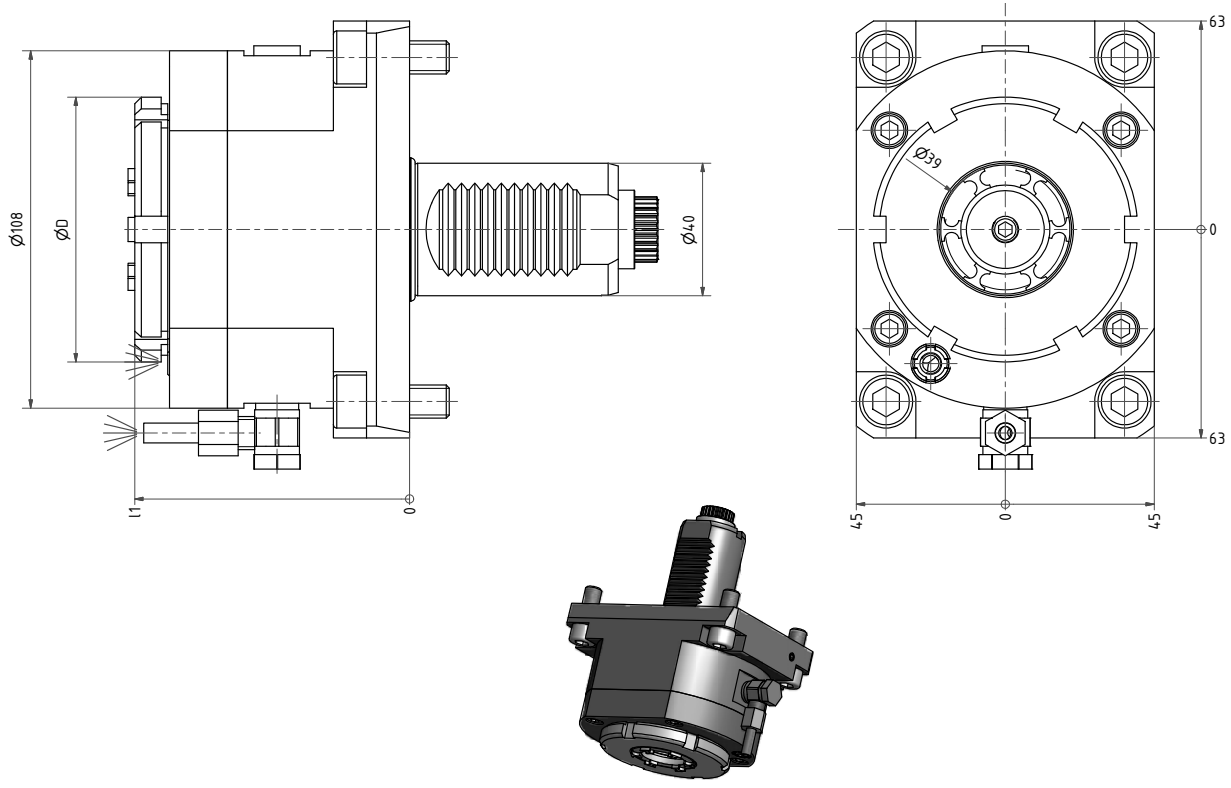


Nr. / No.	ØD	Ausrichtsystem / adjusting system
17.4032DCTXTF-PL	32	Trifix®
17.4040DCTXTF-PL	40	Trifix®

Weitere Ø auf Anfrage / Further Ø on request

Axial Bohr- und Fräskopf
ProLine

Axial drilling and milling head
ProLine



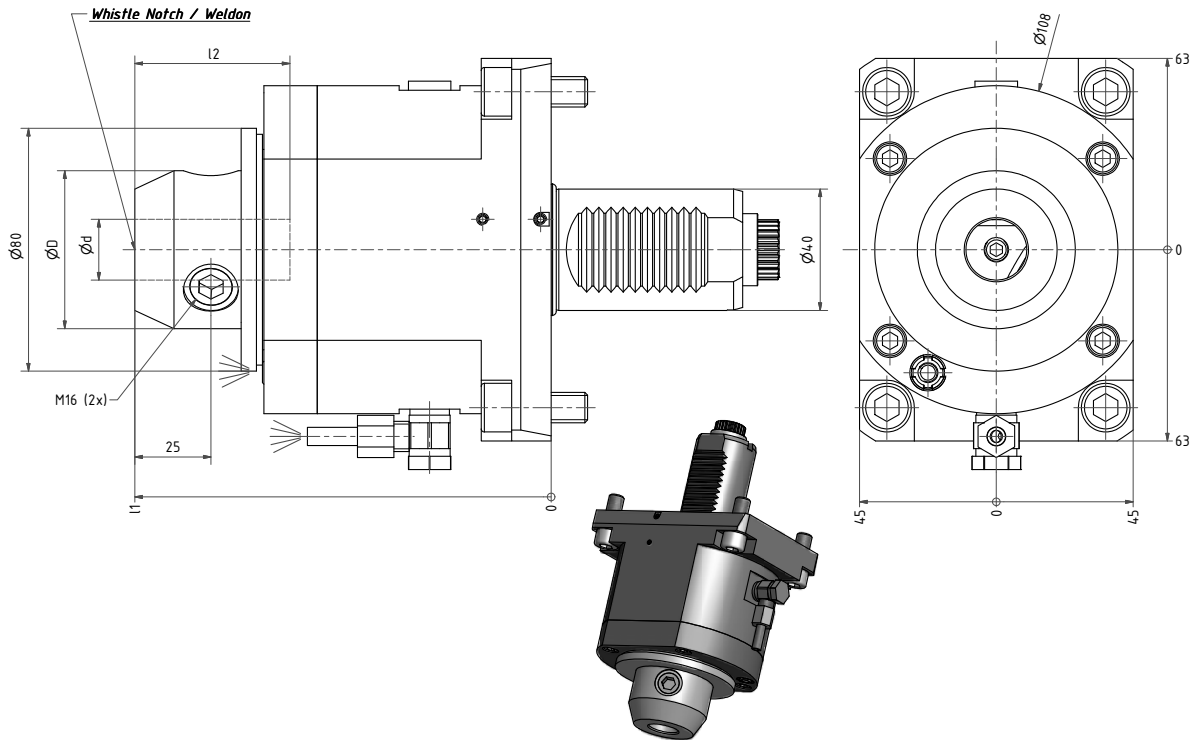
KR = Kegelrollenlager
KR = Taper roller bearing

Spannzangenaufnahme /
Collet chuck

Nr. / No.	Spannzange / Collet	l1	n _{max} 1/min	i	T _{max} Nm	Kühlung / coolant
40.4032KRCTX-PLX83	ER32 (3-20)	83	5000	1:1	50	Ext
40.4032CTX-PLX105	ER32 (3-20)	105	6000	1:1	50	Ext
40.4032KRCTX-PLX105	ER32 (3-20)	105	5000	1:1	50	Ext
40.4032KRCTXIK-PLX105	ER32 (3-20)	105	5000	1:1	50	Int / Ext
40.4032CTXIK-PLX105	ER32 (3-20)	105	6000	1:1	50	Int / Ext

Axial Bohr- und Fräbkopf
ProLine

Axial drilling and milling head
ProLine



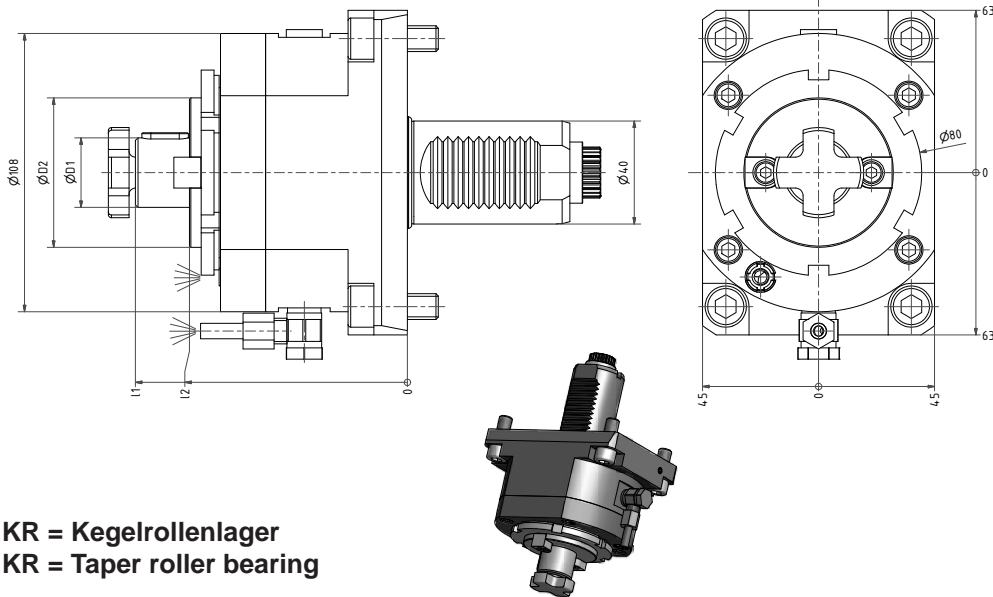
KR = Kegelrollenlager
KR = Taper roller bearing

Weldon / Whistle Notch

Nr. / No.	Ød	ØD	l1	l2	n _{max} 1/min	i	T _{max} Nm	Kühlung / coolant
40.4020WNRCTX-PL137	20	52	137	51	5000	1:1	50	Ext
40.4020WNRCTXIK-PL137	20	52	137	51	5000	1:1	50	Int / Ext
40.4032WNRCTX-PL100	32	66	100	64	5000	1:1	50	Ext
40.4032WNCTX-PL122	32	66	122	64	6000	1:1	50	Ext
40.4032WNCTXIK-PL122	32	66	122	64	6000	1:1	50	Int / Ext
40.4032WNRCTX-PL122	32	66	122	64	5000	1:1	50	Ext
40.4032WNRCTXIK-PL122	32	66	122	64	5000	1:1	50	Int / Ext

Axial Fräskopf
ProLine

Axial milling head
ProLine



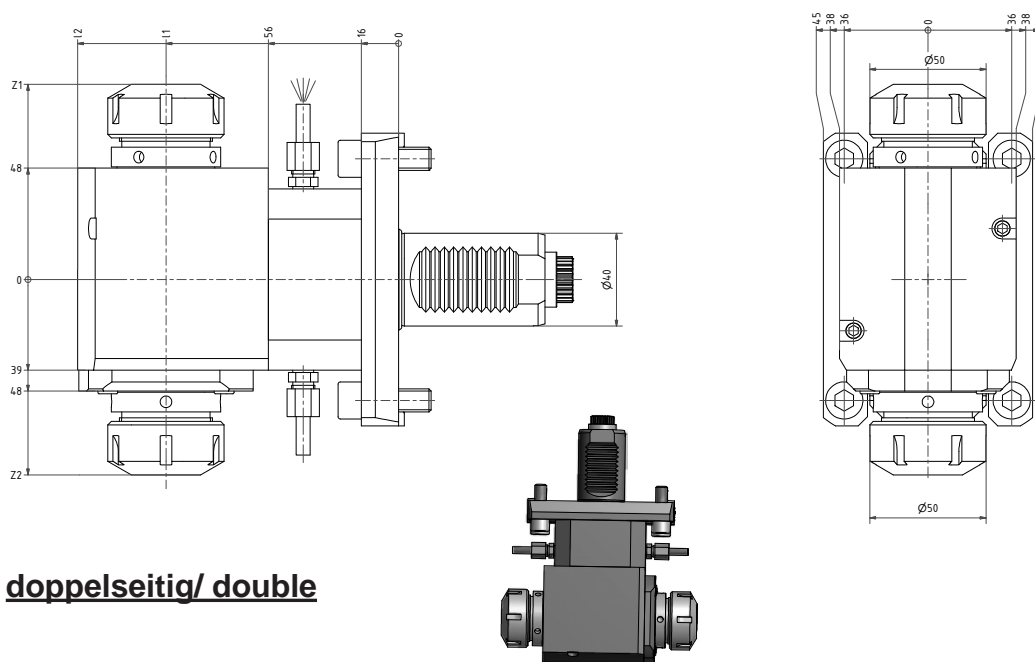
KR = Kegelrollenlager
KR = Taper roller bearing

Nr. / No.	ØD1	ØD2	I1	I2	n _{max} 1/min	i	T _{max} Nm	Kühlung / coolant
42.4027KRCTX-PLX106-5	27	58	127,5	106,5	5000	1:1	50	Ext
42.4022KRCTXI4-PLX100	22	48	119	100	1500	4:1	160	Ext
42.4027KRCTXI4-PLX100	27	58	121	100	1500	4:1	160	Ext

Weitere ØD1 verfügbar / additional ØD1 available

Radial Bohr- und Fräskopf
ProLine

Radial drilling and milling head
ProLine



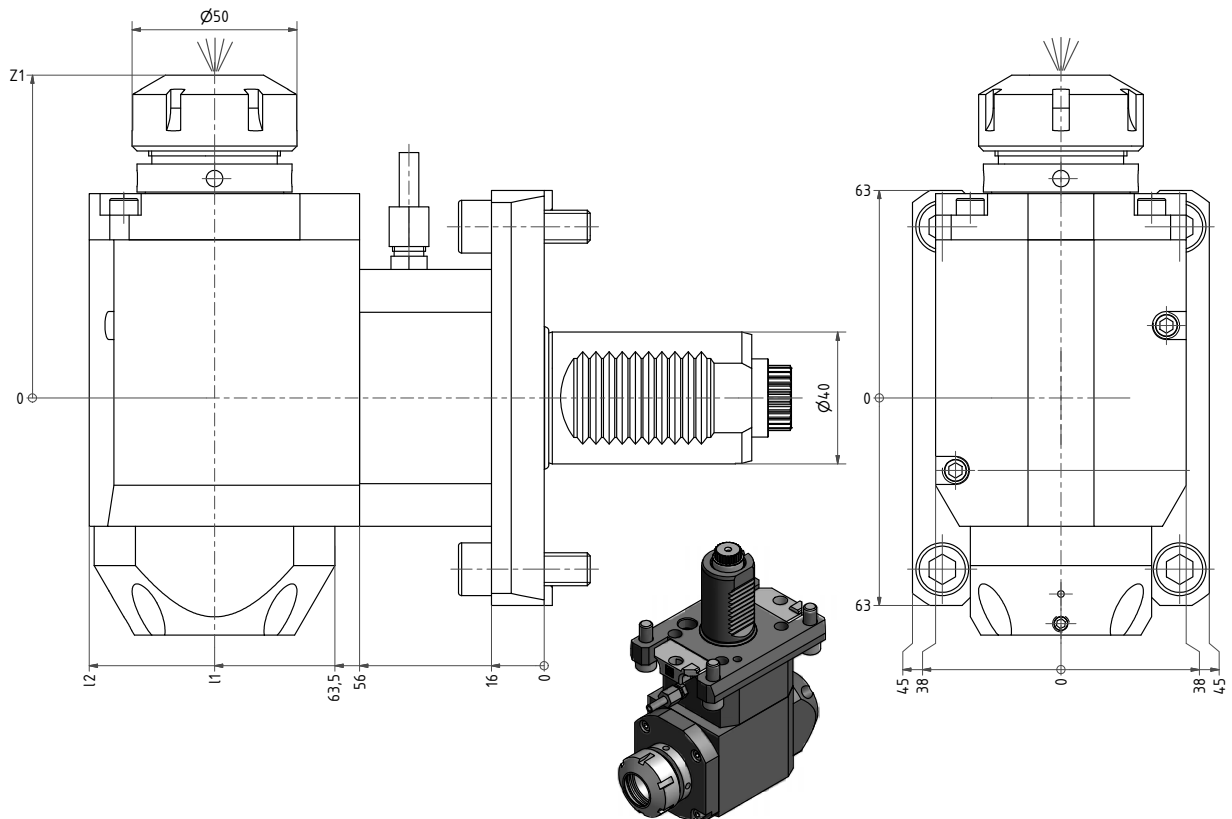
doppelseitig/ double

Auch mit I1= 120 verfügbar / Also with I1= 120 available

Nr. / No.	Spannzange/ Collet	I1	I2	Z1/ Z2	n _{max} 1/min	i	T _{max} Nm	Kühlung / coolant	Ausrichtungssys./ adjusting system
60.4032DCTXTF-PL	ER32 (3-20)	100	138	85	6000	1:1	50	Ext	Trifix®

Radial Bohr- und Fräskopf
ProLine

Radial drilling and milling head
ProLine



Dargestellt / Shown:
links / left hand

Spannzangenaufnahme/
Collet chuck

CTX L= links / left hand
CTX R= rechts / right hand

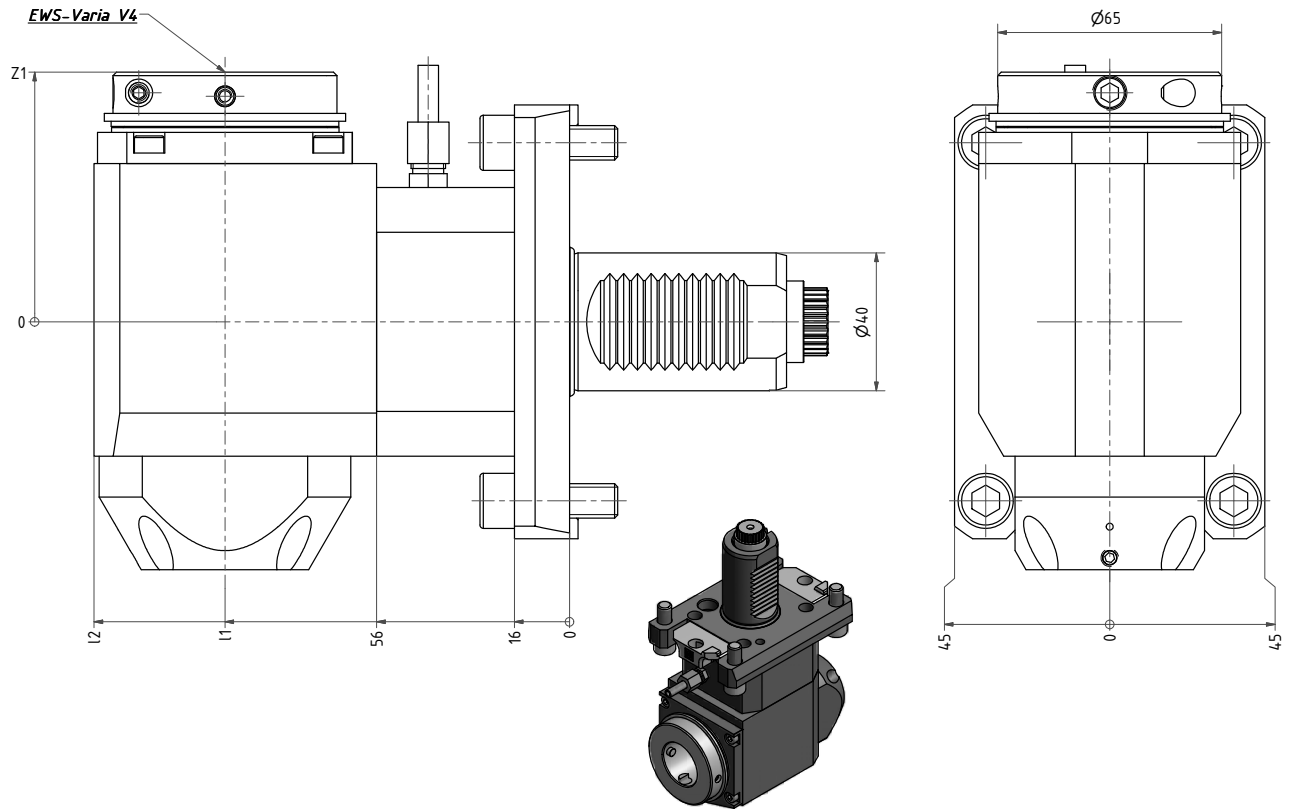
Auch mit l1= 120 verfügbar / Also with l1= 120 available

Nr. / No.	Spannzange/ Collet	l1	l2	Z1	n _{max} 1/min	i	T _{max} Nm	Kühlung / coolant	Ausrichtungssys./ adjusting system
60.4032CTXLTF-PL	ER32 (3-20)	100	138	99	6000	1:1	50	Ext	Trifix®
60.4032CTXRTF-PL	ER32 (3-20)	100	138	99	6000	1:1	50	Ext	Trifix®
60.4032KRCTXLTF-PL	ER32 (3-20)	100	138	99	5000	1:1	50	Ext	Trifix®
60.4032KRCTXRTF-PL	ER32 (3-20)	100	138	99	5000	1:1	50	Ext	Trifix®
60.4032CTXLI2TF-PL	ER32 (3-20)	100	138	93	3000	2:1	80	Ext	Trifix®
60.4032CTXRI2TF-PL	ER32 (3-20)	100	138	93	3000	2:1	80	Ext	Trifix®

Auch mit Innenkühlung verfügbar / also available with internal coolant

Radial Bohr- und Fräskopf
ProLine

Radial drilling and milling head
ProLine



Dargestellt / Shown:
links / left hand

EWS-Varia

CTX L= links / left hand
CTX R= rechts / right hand

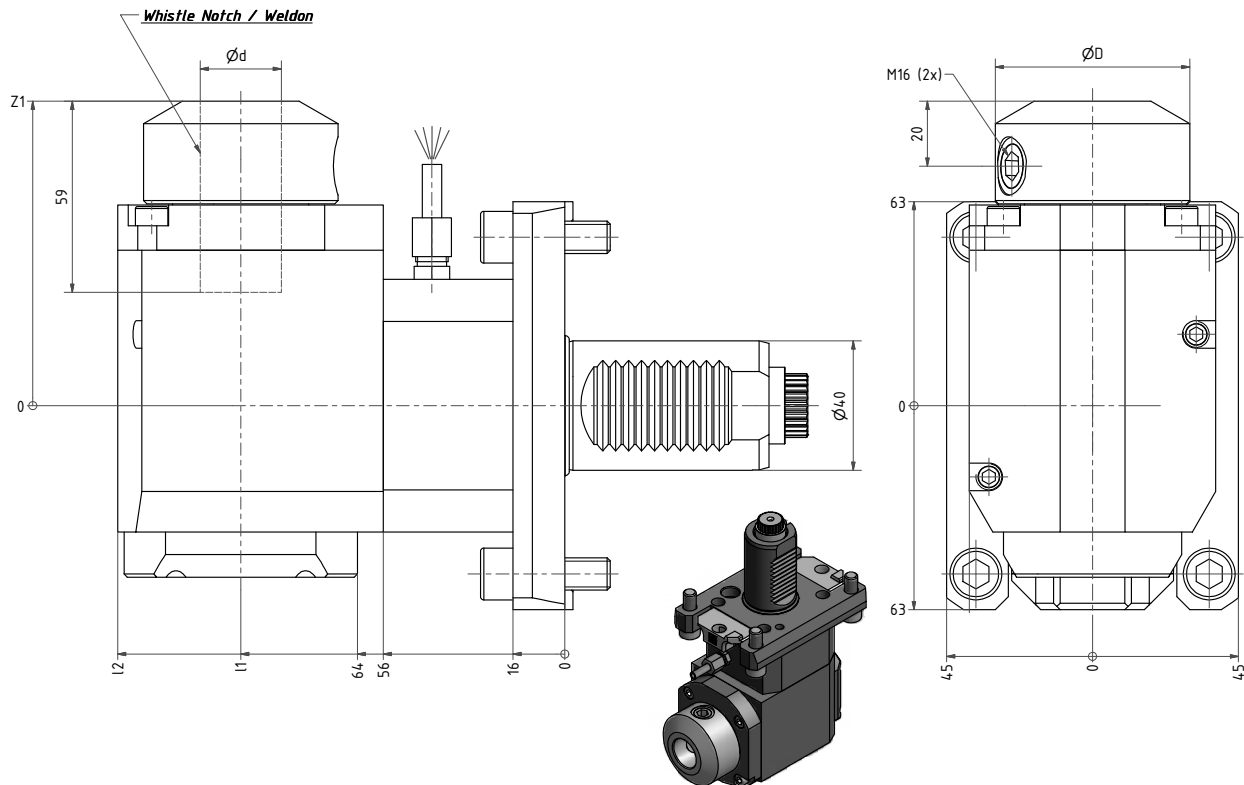
Auch mit I1= 120 verfügbar / Also with I1= 120 available

Nr. / No.	EWS-Varia	ØD	I1	I2	Z1	n _{max} 1/min	i	T _{max} Nm	Kühlung / coolant	Ausrichtungssys./ adjusting system
60.40V4CTXLTF-PL	V4	65	100	138	72,5	6000	1:1	50	Ext	Trifix®
60.40V4CTXRTF-PL	V4	65	100	138	72,5	6000	1:1	50	Ext	Trifix®

Auch mit Innenkühlung verfügbar / also available with internal coolant

Radial Bohr- und Fräskopf
ProLine

Radial drilling and milling head
ProLine



Dargestellt / Shown:
links / left hand

Weldon / Whistle notch

CTX L= links / left hand
CTX R= rechts / right hand

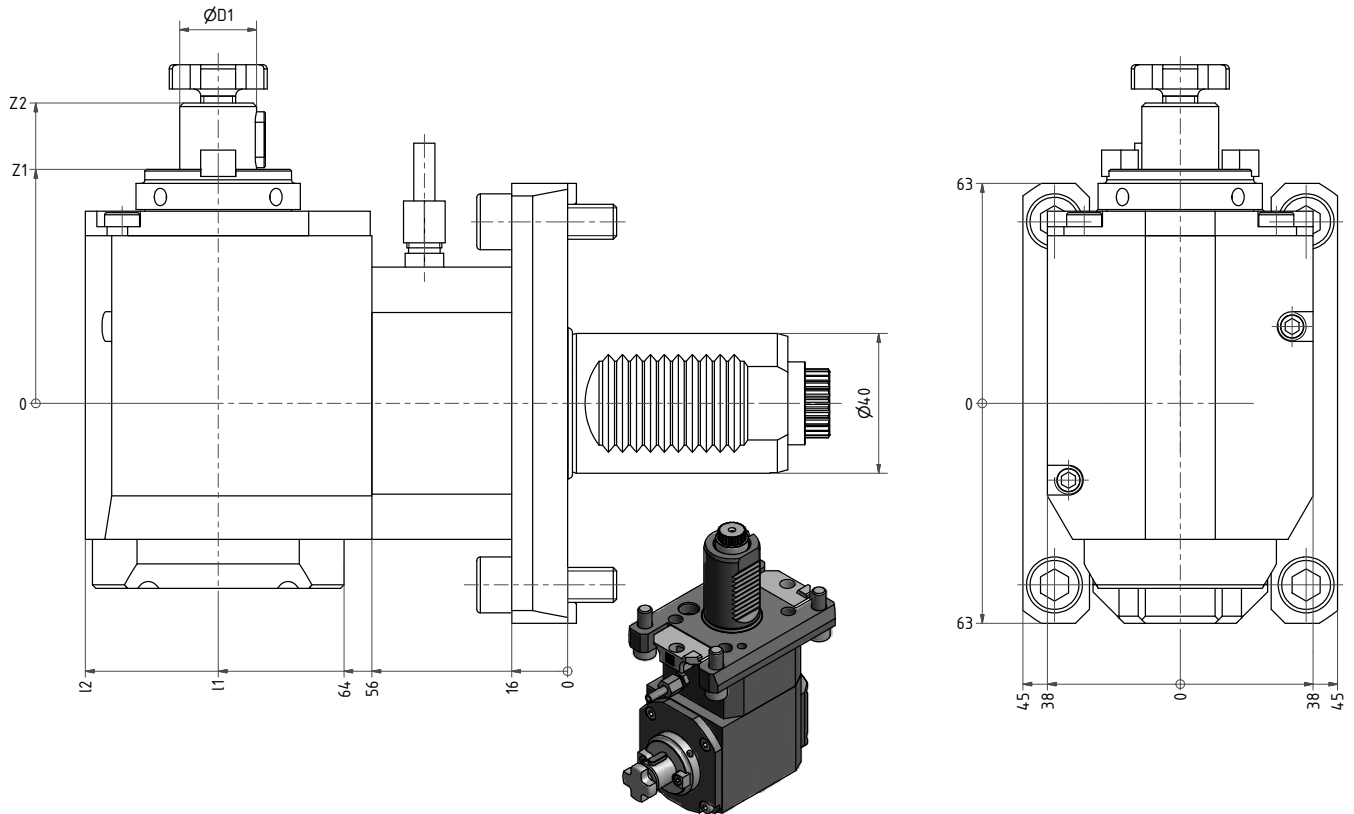
Auch mit l1= 120 verfügbar / Also with l1= 120 available

Nr. / No.	Ød	ØD	l1	l2	Z1	n _{max} 1/min	i	T _{max} Nm	Kühlung / coolant	Ausrichtungssys./ adjusting system
60.4025WNCTXLTF-PL	25	60	100	138	94	6000	1:1	50	Ext	Trifix®
60.4025WNCTXRTF-PL	25	60	100	138	94	6000	1:1	50	Ext	Trifix®
60.4025WNRCTXLI2TF-PL	25	60	100	138	87	3000	2:1	80	Ext	Trifix®
60.4025WNRCTXRI2TF-PL	25	60	100	138	87	3000	2:1	80	Ext	Trifix®
60.4032WNRCTXLTF-PL	32	66	100	138	94,5	5000	1:1	50	Ext	Trifix®
60.4032WNRCTXRTF-PL	32	66	100	138	94,5	5000	1:1	50	Ext	Trifix®
60.4032WNRCTXLI2TF-PL	32	66	100	138	94,5	3000	2:1	80	Ext	Trifix®
60.4032WNRCTXRI2TF-PL	32	66	100	138	94,5	3000	2:1	80	Ext	Trifix®

Auch mit Innenkühlung verfügbar / also available with internal coolant

Radial Fräskopf
ProLine

Radial milling head
ProLine



Dargestellt / Shown:
links / left hand

CTX L= links / left hand
CTX R= rechts / right hand

Nr. / No.	ØD1	I1	I2	Z1	Z2	n _{max} 1/min	i	T _{max} Nm	Kühlung / coolant	Ausrichtungssys./ adjusting system
62.4022KRCTXLTF-PL	22	100	138	67	86	5000	1:1	50	Ext	Trifix®
62.4022KRCTXRTF-PL	22	100	138	67	86	5000	1:1	50	Ext	Trifix®
62.4022KRCTXLI2TF-PL	22	100	138	68	87	3000	2:1	80	Ext	Trifix®
62.4022KRCTXRI2TF-PL	22	100	138	68	87	3000	2:1	80	Ext	Trifix®
62.4027KRCTXLTF-PL	27	100	138	72,5	93,5	5000	1:1	50	Ext	Trifix®
62.4027KRCTXRTF-PL	27	100	138	72,5	93,5	5000	1:1	50	Ext	Trifix®
62.4027KRCTXLI2TF-PL	27	100	138	66,5	87,5	3000	2:1	80	Ext	Trifix®
62.4027KRCTXRI2TF-PL	27	100	138	66,5	87,5	3000	2:1	80	Ext	Trifix®



EWS Weigele GmbH & Co. KG

Maybachstraße 1 · D-73066 Uhingen
Telefon +49(0)7161-93040-100
Telefax +49(0)7161-93040-30
E-Mail: info@ews-tools.de
www.ews-tools.de

WSW Spannwerkzeuge-Vertriebs GmbH

Maybachstr. 1 · D-73066 Uhingen
Telefon +49(0)7161-93040-100
Telefax +49(0)7161-93040-30
E-Mail: info@wsw-collets.de
www.wsw-collets.de

Command Tooling Systems

13931 Sunfish Lake Blvd NW
Ramsey · MN 55303 USA
Telefon +1-763-576-6910
Telefax +1-763-576-6911
support@commandtool.com
www.commandtool.com

EWS Korea Co. Ltd.

60-11 · Woongnam-Dong
Changwon
Kyoung-Nam Korea
Telefon +82 55-267-8085
Telefax +82 55-262-3118
E-Mail: info@ewskorea.co.kr
www.ewskorea.co.kr

EWS Ltd.

B. Nizhegorodskaya str., 81
office 806
600000 Vladimir Russland
Telefon: +7-4922-490420
Fax: +7-4922-451828
info@ews-rusland.ru
www.ews-rusland.ru

