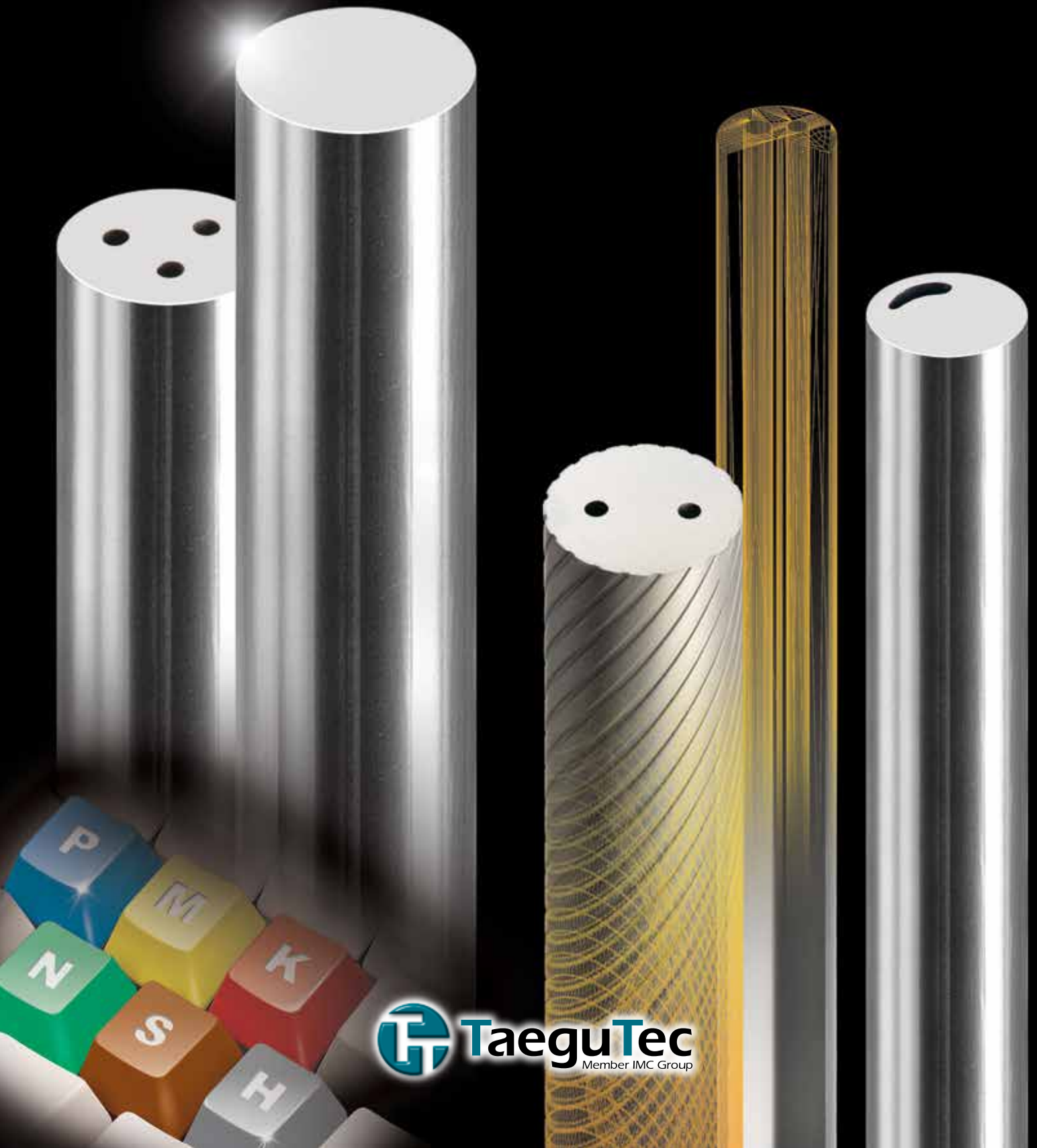


# 2014 METALWORKING CARBIDE RODS



 **TaeguTec**  
Member IMC Group

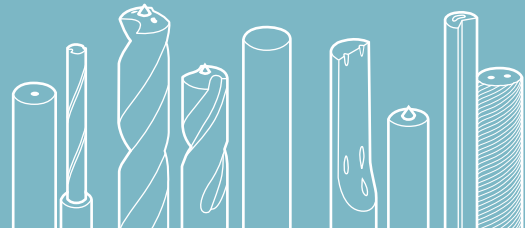
# Contents

**4** PAGE

## Grades

**5** PAGE

## Identification System



**TaeguTec Ltd. acquired the standard for manufacturing and servicing of aerospace components.**

TaeguTec has achieved the Quality Management System standard AS 9100 - the standard for manufacturing and servicing of aerospace components from DNV (DET NORSKE VERITAS).

AS 9100 is the only globally recognized standard for the aerospace industry and it has become the worldwide standard for the sector.

The quality management system requires a high degree of stability and reliability and TaeguTec meets the requirements of the standard with its high quality advanced technology production methods & systems.

**6** PAGE

**35** PAGE

### Without Coolant Hole Rods

- ▶ Unground Long
- ▶ Unground Cut-to-length
- ▶ Ground Rod - h6
  - Long
  - Cut-to-length
  - Step-formed & Chamfered
- ▶ **New!** Ground Rod - h5
  - Long
  - Cut-to-length

### With Coolant Hole Rods

- ▶ 1 Straight Coolant Hole
- ▶ 2 Straight Coolant Holes
- ▶ 2 Sprial Coolant Holes 30°
- ▶ 2 Sprial Coolant Holes 40°
- ▶ 3 Sprial Coolant Holes 30°
- ▶ Gun Drill Blank with 1 Kidney Hole
- ▶ Gun Drill Blank with 2 Round Holes



# Grades

**New!**

Grade		UF09	UF10N	UF12	UF10	UF1	K20
ISO range		K01-K10	K05-K10	K10-K30	K20-K50	K05-K10	K20
WC + other carbides	%	91	90	88	90	94	94
Co	%	9	10	12	10	6	6
WC grain size		Ultrafine	Ultrafine	Ultrafine	Submicron	Submicron	Fine
Density	g/cm <sup>3</sup>	14.40	14.40	14.10	14.45	14.90	14.95
Hardness	Hv30	1910	1800	1760	1600	1800	1630
	HRA	93.9	93.0	92.7	92.0	93.0	92.0
Transverse rupture strength	N/mm <sup>2</sup>	3807.3	3944.5	4047.4	4253.2	3704.4	3704.0
	kpsi	555	575	590	620	540	540
Fracture toughness	Mpa.m <sup>1/2</sup>	11.0	12.8	13.8	14.7	12.7	14.0
Young's modulus	kpsi	86,780	85,360	82,860	80,000	91,000	87,000
Compressive strength	kpsi	1,145	1,015	900	870	1,000	870

## Properties & Application of Main Grades

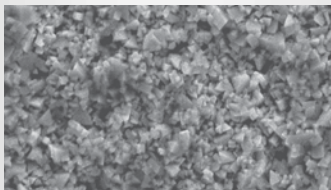
### UF09

#### Properties

- Ultra fine grain WC with 9% Co
- Very high wear resistance and excellent deformation resistance

#### Application

- High cutting speed milling
- For use on hardened steel, plastics, fibre reinforced materials, aluminum alloys, graphite



### UF10N

#### Properties

- Ultra fine grain WC with 10% Co
- Very high wear resistance and excellent deformation resistance

#### Application

- High cutting speed milling & drilling
- For use on wood and paper, titanium alloys, fibre reinforced materials, aluminum alloys



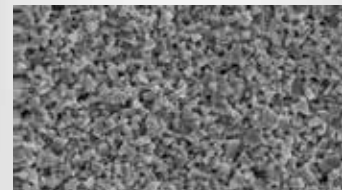
### UF10

#### Properties

- Submicron grain WC with 10% Co
- High toughness and wear resistance

#### Application

- Medium cutting speed and feed
- For use on unalloyed engineering steel, stainless steel, nickel based alloys, titanium alloy, cast iron



### UF12

#### Properties

- Ultra-fine grain WC with 12% Co
- Very high toughness and high wear resistance

#### Application

- High cutting speed and medium feed
- For use on unalloyed engineering steel, stainless steel, Nickel based alloy, titanium alloy



### UF1

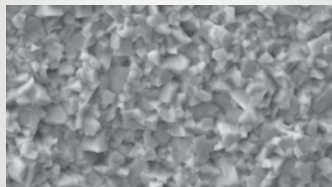
**New!**

#### Properties

- Submicron grain WC with 6% Co
- Very high wear resistance

#### Application

- High cutting speed milling
- For use on hardened steel, plastics, fibre reinforced materials, aluminum alloys



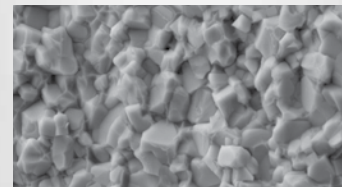
### K20

#### Properties

- Fine grain WC with 6%Co
- High wear resistance

#### Application

- High cutting speed drilling & reaming
- For use on grey cast iron, chilled cast iron, unalloyed steel



# IDENTIFICATION SYSTEM

## Without Coolant Hole Long Rods

<b>R</b>	<b>S</b>	<b>0820</b>	<b>3200</b>
<b>Shape</b> R: round	<b>Surface condition</b> S: sintered G: ground to h6 F: semi-finished or ground (not to h6) P: polished & ground to h5	<b>Diameter</b> Ø8.2mm	<b>Length</b> 320mm

## Cut-to-length Rods without Coolant Hole

<b>R</b>	<b>G</b>	<b>S</b>	<b>I</b>	<b>C</b>	<b>0820</b>	<b>0640</b>
<b>Shape</b> R: round	<b>Surface condition</b> S: sintered G: ground to h6 F: semi-finished or ground (not to h6) P: polished & ground to h5	<b>Shape of rods</b> S: for step E/M B: for ball E/M No designation : normal rods	<b>Unit</b> M: metric I: inch	<b>End</b> C: chamfered N: no chamfer	<b>Diameter</b> Ø8.2mm	<b>Length</b> 64mm

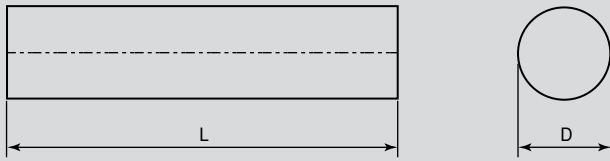
## Coolant Hole Rods

<b>R</b>	<b>S</b>	<b>2</b>	<b>S</b>	<b>0820</b>	<b>0640</b>	<b>38</b> / <b>14</b>
<b>Shape</b> R: round	<b>Surface condition</b> S: sintered G: ground to h6 F: semi-finished or ground (not to h6) P: polished & ground to h5	<b>Coolant hole</b> 1: one hole 2: two holes 3: three holes	<b>Coolant hole type</b> S: straight hole H: helical hole(30°) J: helical hole(40°) G: gun drill	<b>Diameter</b> Ø8.2mm	<b>Length</b> 64mm	<b>Distance between coolant holes</b> 3.8mm <b>Coolant hole size</b> 1.4mm

# WITHOUT COOLANT HOLE RODS



# Unground Long - 320mm



D(mm)	Tolerance(mm)	L(mm)	Tolerance(mm)
D ≤ 5	+0.3	310 < L	+6.0
5 < D ≤ 20	+0.4		
20 < D	+0.6		

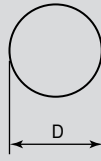


## RS Metric Type

Ordering Code	Dimension		Grade					
	D(mm)	L(mm)	UF10	UF12	UF10N	UF09	UF1	K20
RS 0120 3200	1.2	320	△	△	△	△	◆	
RS 0170 3200	1.7	320	△	△	△	△	◆	
RS 0220 3200	2.2	320	△	△	△	△	◆	△
RS 0270 3200	2.7	320	△	△	△	△	◆	
RS 0320 3200	3.2	320	△	△	△	△	◆	△
RS 0370 3200	3.7	320	△	△	△	△	◆	
RS 0420 3200	4.2	320	△	△	△	△	◆	△
RS 0470 3200	4.7	320	△	△	△	△	◆	
RS 0520 3200	5.2	320	△	△	△	△	◆	△
RS 0570 3200	5.7	320	△	△	△	△	◆	
RS 0620 3200	6.2	320	△	△	△	△	◆	△
RS 0670 3200	6.7	320	△	△	△	△	◆	
RS 0720 3200	7.2	320	△	△	△	△	◆	△
RS 0770 3200	7.7	320	△	△	△	△	◆	
RS 0820 3200	8.2	320	△	△	△	△	◆	△
RS 0870 3200	8.7	320	△	△	△	△	◆	
RS 0920 3200	9.2	320	△	△	△	△	◆	△
RS 0970 3200	9.7	320	△	△	△	△	◆	
RS 1020 3200	10.2	320	△	△	△	△	◆	△
RS 1070 3200	10.7	320	△	△	△	△	◆	
RS 1120 3200	11.2	320	△	△	△	△	◆	△
RS 1170 3200	11.7	320	△	△	△	△	◆	
RS 1220 3200	12.2	320	△	△	△	△	◆	△
RS 1270 3200	12.7	320	△	△	△	△	◆	
RS 1320 3200	13.2	320	△	△	△	△	◆	△
RS 1370 3200	13.7	320	△	△	△	△	◆	
RS 1420 3200	14.2	320	△	△	△	△	◆	△
RS 1470 3200	14.7	320	△	△	△	△	◆	

- : Stock item
- △ : Limited stock or on request
- ◆ : New products

# Unground Long - 320mm



D(mm)	Tolerance(mm)	L(mm)	Tolerance(mm)
$D \leq 5$	+0.3	310 < L	+6.0
$5 < D \leq 20$	+0.4		
$20 < D$	+0.6		



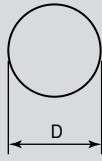
## RS Metric Type

Ordering Code	Dimension		Grade					
	D(mm)	L(mm)	UF10	UF12	UF10N	UF09	UF1	K20
RS 1520 3200	15.2	320	△	△	△	△	◆	△
RS 1570 3200	15.7	320	△	△	△	△	◆	
RS 1620 3200	16.2	320	△	△	△	△	◆	△
RS 1670 3200	16.7	320	△	△	△	△	◆	
RS 1720 3200	17.2	320	△	△	△	△	◆	△
RS 1770 3200	17.7	320	△	△	△	△	◆	
RS 1820 3200	18.2	320	△	△	△	△	◆	△
RS 1870 3200	18.7	320	△	△	△	△	◆	
RS 1920 3200	19.2	320	△	△	△	△	◆	△
RS 2020 3200	20.2	320	△	△	△	△	◆	△
RS 2120 3200	21.2	320	△	△				
RS 2220 3200	22.2	320	△	△				
RS 2320 3200	23.2	320	△	△				
RS 2420 3200	24.2	320	△	△				
RS 2520 3200	25.2	320	△	△				
RS 2620 3200	26.2	320	△	△				
RS 2820 3200	28.2	320	△	△				
RS 3020 3200	30.2	320	△	△				
RS 3220 3200	32.2	320	△	△				
RS 3420 3200	34.2	320	△	△				
RS 3520 3200	35.2	320	△	△				
RS 3620 3200	36.2	320	△	△				
RS 3820 3200	38.2	320	△	△				
RS 4020 3200	40.2	320	△	△				

- : Stock item
- △ : Limited stock or on request
- ◆ : New products



# Unground Long - 320mm



D(inch)	Tolerance(inch)	L(inch)	Tolerance(inch)
$D \leq 0.197$	+0.012		
$0.197 < D \leq 0.787$	+0.016	$12 \frac{1}{2} \leq L$	+0.236
$0.787 < D$	+0.024		

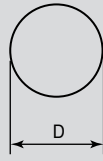


## RS Inch Type

Ordering Code	Dimension		Grade					
	D(inch)	L(inch)	UF10	UF12	UF10N	UF09	UF1	K20
RS 1/8x12 1/2	1/8	12 1/2	△	△	△	△	◆	
RS 9/64x12 1/2	9/64	12 1/2	△	△	△	△	◆	
RS 5/32x12 1/2	5/32	12 1/2	△	△	△	△	◆	
RS 3/16x12 1/2	3/16	12 1/2	△	△	△	△	◆	
RS 13/64x12 1/2	13/64	12 1/2	△	△	△	△	◆	
RS 1/4x12 1/2	1/4	12 1/2	△	△	△	△	◆	
RS 17/64x12 1/2	17/64	12 1/2	△	△	△	△	◆	
RS 9/32x12 1/2	9/32	12 1/2	△	△	△	△	◆	
RS 5/16x12 1/2	5/16	12 1/2	△	△	△	△	◆	
RS 21/64x12 1/2	21/64	12 1/2	△	△	△	△	◆	
RS 11/32x12 1/2	11/32	12 1/2	△	△	△	△	◆	
RS 23/64x12 1/2	23/64	12 1/2	△	△	△	△	◆	
RS 3/8x12 1/2	3/8	12 1/2	△	△	△	△	◆	
RS 25/64x12 1/2	25/64	12 1/2	△	△	△	△	◆	
RS 13/32x12 1/2	13/32	12 1/2	△	△	△	△	◆	
RS 27/64x12 1/2	27/64	12 1/2	△	△	△	△	◆	
RS 7/16x12 1/2	7/16	12 1/2	△	△	△	△	◆	
RS 29/64x12 1/2	29/64	12 1/2	△	△	△	△	◆	
RS 15/32x12 1/2	15/32	12 1/2	△	△	△	△	◆	
RS 31/64x12 1/2	31/64	12 1/2	△	△	△	△	◆	
RS 1/2x12 1/2	1/2	12 1/2	△	△	△	△	◆	
RS 9/16x12 1/2	9/16	12 1/2	△	△	△	△	◆	
RS 5/8x12 1/2	5/8	12 1/2	△	△	△	△	◆	
RS 11/16x12 1/2	11/16	12 1/2	△	△	△	△	◆	
RS 3/4x12 1/2	3/4	12 1/2	△	△	△	△	◆	
RS 13/16x12 1/2	13/16	12 1/2	△	△	△	△	◆	
RS 7/8x12 1/2	7/8	12 1/2						
RS 15/16x12 1/2	15/16	12 1/2						
RS 1x12 1/2	1	12 1/2						
RS 1 1/4x12 1/2	1 1/4	12 1/2						
RS 1 1/2x12 1/2	1 1/2	12 1/2						

- : Stock item
- △ : Limited stock or on request
- ◆ : New products

# Unground Long - 330mm



D(mm)	Tolerance(mm)	L(mm)	Tolerance(mm)
$D \leq 5$	+0.3	310 < L	+6.0
$5 < D \leq 20$	+0.4		
$20 < D$	+0.6		

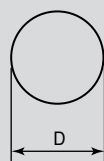
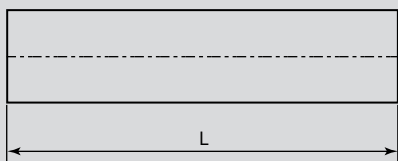


## RS Metric Type

Ordering Code	Dimension		Grade					
	D(mm)	L(mm)	UF10	UF12	UF10N	UF09	UF1	K20
RS 0120 3300	1.2	330	●	●	△	△	◆	
RS 0170 3300	1.7	330	●	●	△	△	◆	
RS 0220 3300	2.2	330	●	●	△	△	◆	△
RS 0270 3300	2.7	330	●	●	△	△	◆	
RS 0320 3300	3.2	330	●	●	△	△	◆	△
RS 0370 3300	3.7	330	●	●	△	△	◆	
RS 0420 3300	4.2	330	●	●	△	△	◆	△
RS 0470 3300	4.7	330	●	●	△	△	◆	
RS 0520 3300	5.2	330	●	●	△	△	◆	△
RS 0570 3300	5.7	330	●	●	△	△	◆	
RS 0620 3300	6.2	330	●	●	△	△	◆	△
RS 0670 3300	6.7	330	●	●	△	△	◆	
RS 0720 3300	7.2	330	●	●	△	△	◆	△
RS 0770 3300	7.7	330	●	●	△	△	◆	
RS 0820 3300	8.2	330	●	●	△	△	◆	△
RS 0870 3300	8.7	330	●	●	△	△	◆	
RS 0920 3300	9.2	330	●	●	△	△	◆	△
RS 0970 3300	9.7	330	●	●	△	△	◆	
RS 1020 3300	10.2	330	●	●	△	△	◆	△
RS 1070 3300	10.7	330	●	●	△	△	◆	
RS 1120 3300	11.2	330	●	●	△	△	◆	△
RS 1170 3300	11.7	330	●	●	△	△	◆	
RS 1220 3300	12.2	330	●	●	△	△	◆	△
RS 1270 3300	12.7	330	●	●	△	△	◆	
RS 1320 3300	13.2	330	●	●	△	△	◆	△
RS 1370 3300	13.7	330	●	●	△	△	◆	
RS 1420 3300	14.2	330	●	●	△	△	◆	△
RS 1470 3300	14.7	330	●	●	△	△	◆	

- : Stock item
- △ : Limited stock or on request
- ◆ : New products

# Unground Long - 330mm



D(mm)	Tolerance(mm)	L(mm)	Tolerance(mm)
D ≤ 5	+0.3	310 < L	+6.0
5 < D ≤ 20	+0.4		
20 < D	+0.6		

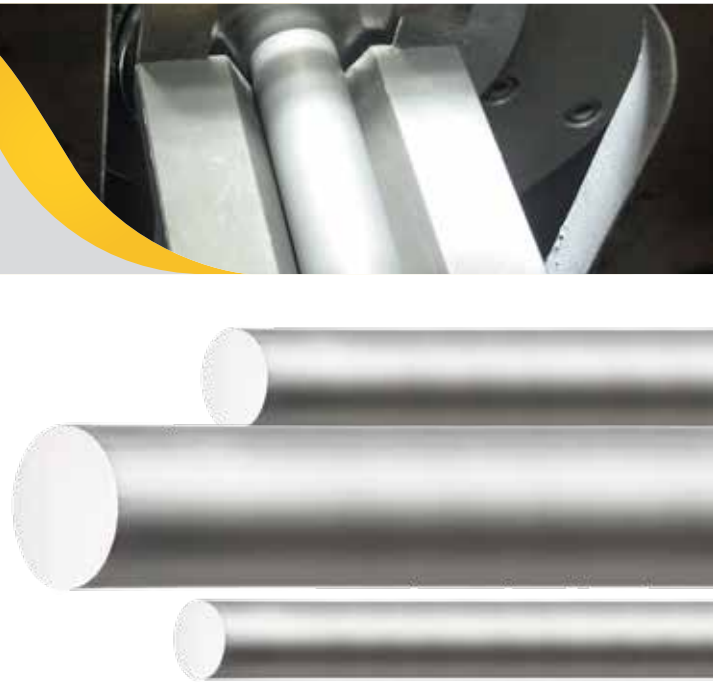
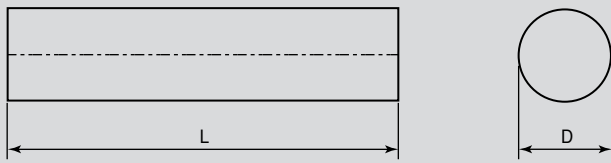


## RS Metric Type

Ordering Code	Dimension		Grade					
	D(mm)	L(mm)	UF10	UF12	UF10N	UF09	UF1	K20
RS 1520 3300	15.2	330	●	●	△	△	◆	△
RS 1570 3300	15.7	330	●	●	△	△	◆	△
RS 1620 3300	16.2	330	●	●	△	△	◆	△
RS 1670 3300	16.7	330	●	●	△	△	◆	△
RS 1720 3300	17.2	330	●	●	△	△	◆	△
RS 1770 3300	17.7	330	●	●	△	△	◆	△
RS 1820 3300	18.2	330	●	●	△	△	◆	△
RS 1870 3300	18.7	330	●	●	△	△	◆	△
RS 1920 3300	19.2	330	●	●	△	△	◆	△
RS 2020 3300	20.2	330	●	●	△	△	◆	△
RS 2120 3300	21.2	330	●	●	△	△	◆	△
RS 2220 3300	22.2	330	●	●	△	△	◆	△
RS 2320 3300	23.2	330	●	●	△	△	◆	△
RS 2420 3300	24.2	330	●	●	△	△	◆	△
RS 2520 3300	25.2	330	●	●	△	△	◆	△
RS 2620 3300	26.2	330	●	●	△	△	◆	△
RS 2820 3300	28.2	330	●	●	△	△	◆	△
RS 3020 3300	30.2	330	●	●	△	△	◆	△
RS 3220 3300	32.2	330	△	△	△	△	◆	△
RS 3420 3300	34.2	330	△	△	△	△	◆	△
RS 3520 3300	35.2	330	△	△	△	△	◆	△
RS 3620 3300	36.2	330	△	△	△	△	◆	△
RS 3820 3300	38.2	330	△	△	△	△	◆	△
RS 4020 3300	40.2	330	△	△	△	△	◆	△

- : Stock item
- △ : Limited stock or on request
- ◆ : New products

# Unground Long - 330mm



D(inch)	Tolerance(inch)	L(inch)	Tolerance(inch)
$D \leq 0.197$	+0.012	$12 \frac{1}{2} \leq L$	+0.236
$0.197 < D \leq 0.787$	+0.016		
$0.787 < D$	+0.024		

## RS Inch Type

Ordering Code	Dimension		Grade					
	D(inch)	L(inch)	UF10	UF12	UF10N	UF09	UF1	K20
RS 1/8x13	1/8	13	●	●	△	△	◆	
RS 9/64x13	9/64	13	●	●	△	△	◆	
RS 5/32x13	5/32	13	●	●	△	△	◆	
RS 3/16x13	3/16	13	●	●	△	△	◆	
RS 13/64x13	13/64	13	●	●	△	△	◆	
RS 1/4x13	1/4	13	●	●	△	△	◆	
RS 17/64x13	17/64	13	●	●	△	△	◆	
RS 9/32x13	9/32	13	●	●	△	△	◆	
RS 5/16x13	5/16	13	●	●	△	△	◆	
RS 21/64x13	21/64	13	●	●	△	△	◆	
RS 11/32x13	11/32	13	●	●	△	△	◆	
RS 23/64x13	23/64	13	●	●	△	△	◆	
RS 3/8x13	3/8	13	●	●	△	△	◆	
RS 25/64x13	25/64	13	●	●	△	△	◆	
RS 13/32x13	13/32	13	●	●	△	△	◆	
RS 27/64x13	27/64	13	●	●	△	△	◆	
RS 7/16x13	7/16	13	●	●	△	△	◆	
RS 29/64x13	29/64	13	●	●	△	△	◆	
RS 15/32x13	15/32	13	●	●	△	△	◆	
RS 31/64x13	31/64	13	●	●	△	△	◆	
RS 1/2x13	1/2	13	●	●	△	△	◆	
RS 9/16x13	9/16	13	●	●	△	△	◆	
RS 5/8x13	5/8	13	●	●	△	△	◆	
RS 11/16x13	11/16	13	●	●	△	△	◆	
RS 3/4x13	3/4	13	●	●	△	△	◆	
RS 13/16x13	13/16	13	●	●	△	△	◆	
RS 7/8x13	7/8	13	△	△	△	△	◆	
RS 15/16x13	15/16	13	△	△	△	△	◆	
RS 1x13	1	13	△	△	△	△	◆	
RS 1 1/4x13	1 1/4	13	△	△	△	△	◆	
RS 1 1/2x13	1 1/2	13	△	△	△	△	◆	

- : Stock item
- △ : Limited stock or on request
- ◆ : New products

# Unground Cut-to-length



D(mm)	Tolerance(mm)	L(mm)	Tolerance(mm)
D ≤ 5	+0.3	L ≤ 50	+0.8
5 < D ≤ 20	+0.4	50 < L ≤ 100	+1.5
20 < D	+0.6	100 < L ≤ 160	+2.0
		160 < L ≤ 250	+3.0

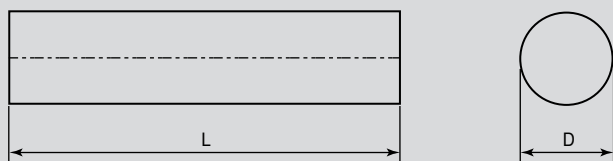


## RSMN Metric Type

Ordering Code	Dimension		Grade					
	D(mm)	L(mm)	UF10	UF12	UF10N	UF09	UF1	K20
RSMN 0320 0390	3.2	39.0	●	●	△	△	◆	
RSMN 0320 0610	3.2	61.0	●	●	△	△	◆	
RSMN 0320 0650	3.2	65.0	●	●	△	△	◆	
RSMN 0420 0400	4.2	40.0	●	●	△	△	◆	
RSMN 0420 0450	4.2	45.0	●	●	△	△	◆	
RSMN 0420 0510	4.2	51.0	●	●	△	△	◆	
RSMN 0420 0600	4.2	60.0	●	●	△	△	◆	
RSMN 0520 0380	5.2	38.0	●	●	△	△	◆	
RSMN 0520 0510	5.2	51.0	●	●	△	△	◆	
RSMN 0520 0580	5.2	58.0	●	●	△	△	◆	
RSMN 0520 0630	5.2	63.0	●	●	△	△	◆	
RSMN 0520 0762	5.2	76.2	●	●	△	△	◆	
RSMN 0620 0460	6.2	46.0	●	●	△	△	◆	
RSMN 0620 0500	6.2	50.0	●	●	△	△	◆	
RSMN 0620 0530	6.2	53.0	●	●	△	△	◆	
RSMN 0620 0550	6.2	55.0	●	●	△	△	◆	
RSMN 0620 0580	6.2	58.0	●	●	△	△	◆	
RSMN 0620 0600	6.2	60.0	●	●	△	△	◆	
RSMN 0620 0630	6.2	63.0	●	●	△	△	◆	
RSMN 0620 0660	6.2	66.0	●	●	△	△	◆	
RSMN 0620 0680	6.2	68.0	●	●	△	△	◆	
RSMN 0620 0700	6.2	70.0	●	●	△	△	◆	
RSMN 0620 0750	6.2	75.0	●	●	△	△	◆	
RSMN 0620 0800	6.2	80.0	●	●	△	△	◆	
RSMN 0620 1010	6.2	101.0	●	●	△	△	◆	
RSMN 0720 0610	7.2	61.0	●	●	△	△	◆	
RSMN 0820 0500	8.2	50.0	●	●	△	△	◆	
RSMN 0820 0610	8.2	61.0	●	●	△	△	◆	
RSMN 0820 0650	8.2	65.0	●	●	△	△	◆	
RSMN 0820 0700	8.2	70.0	●	●	△	△	◆	
RSMN 0820 0750	8.2	75.0	●	●	△	△	◆	
RSMN 0820 0790	8.2	79.0	●	●	△	△	◆	
RSMN 0820 0900	8.2	90.0	●	●	△	△	◆	
RSMN 0820 1010	8.2	101.0	●	●	△	△	◆	

- : Stock item
- △ : Limited stock or on request
- ◆ : New products

# Unground Cut-to-length



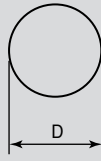
D(mm)	Tolerance(mm)	L(mm)	Tolerance(mm)
D ≤ 5	+0.3	L ≤ 50	+0.8
5 < D ≤ 20	+0.4	50 < L ≤ 100	+1.5
20 < D	+0.6	100 < L ≤ 160	+2.0
		160 < L ≤ 250	+3.0

## RSMN Metric Type

Ordering Code	Dimension		Grade					
	D(mm)	L(mm)	UF10	UF12	UF10N	UF09	UF1	K20
RSMN 0920 0680	9.2	68.0	●	●	△	△	◆	
RSMN 1020 0650	10.2	65.0	●	●	△	△	◆	
RSMN 1020 0680	10.2	68.0	●	●	△	△	◆	
RSMN 1020 0710	10.2	71.0	●	●	△	△	◆	
RSMN 1020 0730	10.2	73.0	●	●	△	△	◆	
RSMN 1020 0750	10.2	75.0	●	●	△	△	◆	
RSMN 1020 0810	10.2	81.0	●	●	△	△	◆	
RSMN 1020 0890	10.2	89.0	●	●	△	△	◆	
RSMN 1020 1010	10.2	101.0	●	●	△	△	◆	
RSMN 1020 1120	10.2	112.0	●	●	△	△	◆	
RSMN 1220 0650	12.2	65.0	●	●	△	△	◆	
RSMN 1220 0760	12.2	76.0	●	●	△	△	◆	
RSMN 1220 0840	12.2	84.0	●	●	△	△	◆	
RSMN 1220 1010	12.2	101.0	●	●	△	△	◆	
RSMN 1220 1120	12.2	112.0	●	●	△	△	◆	
RSMN 1420 0840	14.2	84.0	●	●	△	△	◆	
RSMN 1420 1080	14.2	108.0	●	●	△	△	◆	
RSMN 1420 1245	14.2	124.5	●	●	△	△	◆	
RSMN 1420 1650	14.2	165.0	●	●	△	△	◆	
RSMN 1620 0930	16.2	93.0	●	●	△	△	◆	
RSMN 1620 1010	16.2	101.0	●	●	△	△	◆	
RSMN 1620 1160	16.2	116.0	●	●	△	△	◆	
RSMN 1620 1200	16.2	120.0	●	●	△	△	◆	
RSMN 1620 1340	16.2	134.0	●	●	△	△	◆	
RSMN 2020 1050	20.2	105.0	●	●	△	△	◆	
RSMN 2020 1110	20.2	111.0	●	●	△	△	◆	
RSMN 2020 1200	20.2	120.0	●	●	△	△	◆	
RSMN 2020 1260	20.2	126.0	●	●	△	△	◆	
RSMN 2020 1310	20.2	131.0	●	●	△	△	◆	
RSMN 2020 1510	20.2	151.0	●	●	△	△	◆	
RSMN 2520 1200	25.2	120.0	●	●	△	△	◆	
RSMN 2520 1810	25.2	181.0	●	●	△	△	◆	

- : Stock item
- △ : Limited stock or on request
- ◆ : New products

# Unground Cut-to-length



D(inch)	Tolerance(inch)	L(inch)	Tolerance(inch)
$D \leq 0.197$	+0.012	$L \leq 2.0$	+0.032
$0.197 < D \leq 0.787$	+0.016	$2.0 < L \leq 4.0$	+0.059
$0.787 < D$	+0.024	$4.0 < L \leq 6.3$	+0.079
		$6.3 < L \leq 9.84$	+0.118

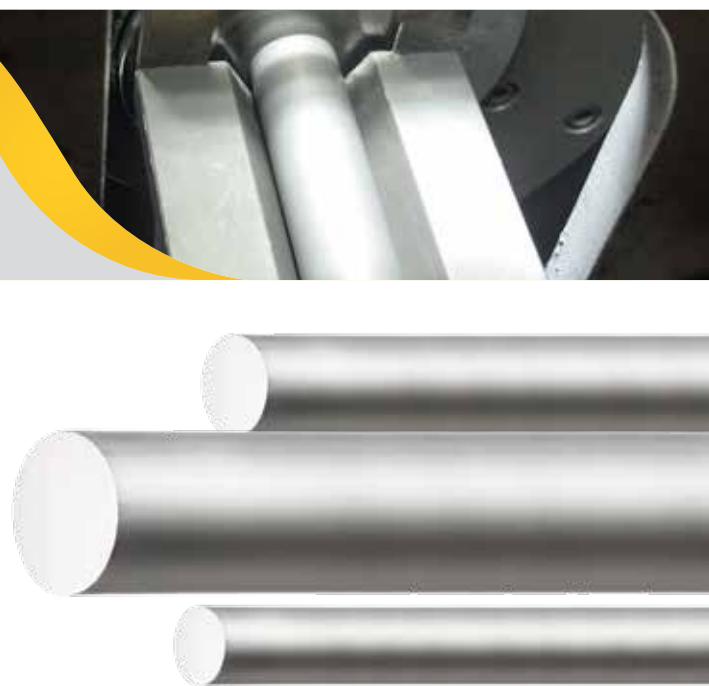
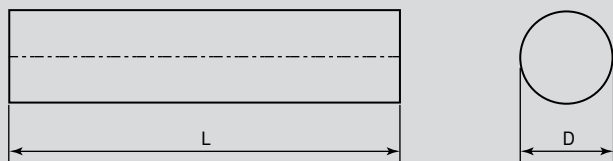


## RSIN Inch Type

Ordering Code	Dimension		Grade					
	D(inch)	L(inch)	UF10	UF12	UF10N	UF09	UF1	K20
RSIN 7/64x2 1/4	7/64	2 1/4	●	●	△	△	◆	
RSIN 1/8x1 1/2	1/8	1 1/2	●	●	△	△	◆	
RSIN 1/8x2	1/8	2	●	●	△	△	◆	
RSIN 1/8x2 1/2	1/8	2 1/2	●	●	△	△	◆	
RSIN 1/8x3	1/8	3	●	●	△	△	◆	
RSIN 1/8x4	1/8	4	●	●	△	△	◆	
RSIN 3/16x1 1/2	3/16	1 1/2	●	●	△	△	◆	
RSIN 3/16x2	3/16	2	●	●	△	△	◆	
RSIN 3/16x2 1/2	3/16	2 1/2	●	●	△	△	◆	
RSIN 3/16x3	3/16	3	●	●	△	△	◆	
RSIN 3/16x4	3/16	4	●	●	△	△	◆	
RSIN 3/16x6	3/16	6	●	●	△	△	◆	
RSIN 1/4x2	1/4	2	●	●	△	△	◆	
RSIN 1/4x2 1/2	1/4	2 1/2	●	●	△	△	◆	
RSIN 1/4x3	1/4	3	●	●	△	△	◆	
RSIN 1/4x3 1/4	1/4	3 1/4	●	●	△	△	◆	
RSIN 1/4x4	1/4	4	●	●	△	△	◆	
RSIN 1/4x6	1/4	6	●	●	△	△	◆	
RSIN 5/16x2	5/16	2	●	●	△	△	◆	
RSIN 5/16x2 1/2	5/16	2 1/2	●	●	△	△	◆	
RSIN 5/16x3	5/16	3	●	●	△	△	◆	
RSIN 5/16x3 1/2	5/16	3 1/2	●	●	△	△	◆	
RSIN 5/16x4	5/16	4	●	●	△	△	◆	
RSIN 5/16x6	5/16	6	●	●	△	△	◆	
RSIN 3/8x2	3/8	2	●	●	△	△	◆	
RSIN 3/8x2 1/2	3/8	2 1/2	●	●	△	△	◆	
RSIN 3/8x3	3/8	3	●	●	△	△	◆	
RSIN 3/8x3 1/2	3/8	3 1/2	●	●	△	△	◆	
RSIN 3/8x4	3/8	4	●	●	△	△	◆	
RSIN 3/8x5	3/8	5	●	●	△	△	◆	
RSIN 3/8x6	3/8	6	●	●	△	△	◆	
RSIN 7/16x2 1/2	7/16	2 1/2	●	●	△	△	◆	
RSIN 7/16x2 3/4	7/16	2 3/4	●	●	△	△	◆	
RSIN 7/16x3	7/16	3	●	●	△	△	◆	
RSIN 7/16x4	7/16	4	●	●	△	△	◆	
RSIN 7/16x6	7/16	6	●	●	△	△	◆	

- : Stock item
- △ : Limited stock or on request
- ◆ : New products

# Unground Cut-to-length



D(inch)	Tolerance(inch)	L(inch)	Tolerance(inch)
$D \leq 0.197$	+0.012	$L \leq 2.0$	+0.032
$0.197 < D \leq 0.787$	+0.016	$2.0 < L \leq 4.0$	+0.059
$0.787 < D$	+0.024	$4.0 < L \leq 6.3$	+0.079
		$6.3 < L \leq 9.8$	+0.118

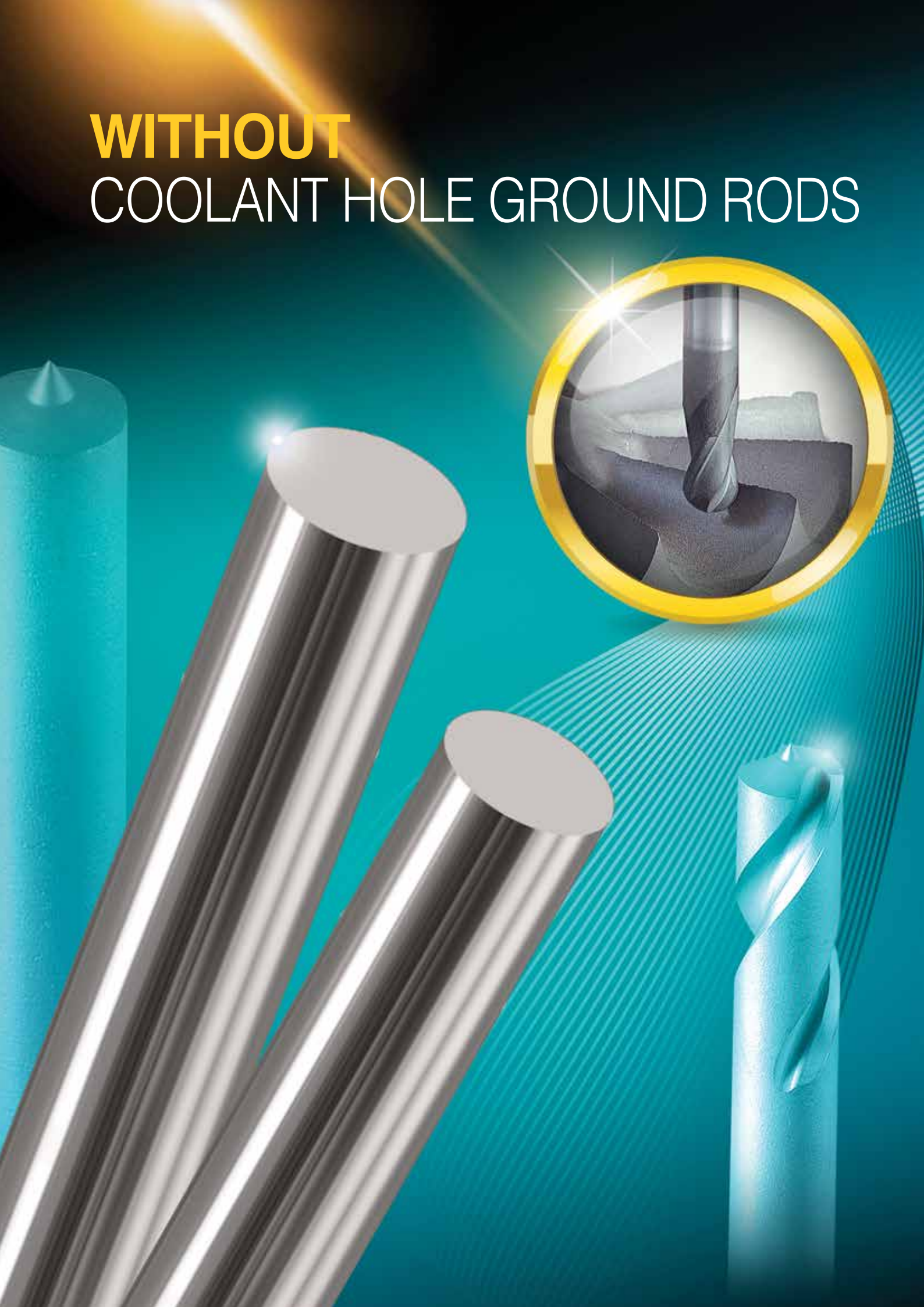
## RSIN Inch Type

Ordering Code	Dimension		Grade					
	D(inch)	L(inch)	UF10	UF12	UF10N	UF09	UF1	K20
RSIN 1/2x2 1/2	1/2	2 1/2	●	●	△	△	◆	
RSIN 1/2x3	1/2	3	●	●	△	△	◆	
RSIN 1/2x3 1/2	1/2	3 1/2	●	●	△	△	◆	
RSIN 1/2x4	1/2	4	●	●	△	△	◆	
RSIN 1/2x4 1/2	1/2	4 1/2	●	●	△	△	◆	
RSIN 1/2x5	1/2	5	●	●	△	△	◆	
RSIN 1/2x6	1/2	6	●	●	△	△	◆	
RSIN 1/2x8	1/2	8	●	●	△	△	◆	
RSIN 9/16x3	9/16	3	●	●	△	△	◆	
RSIN 9/16x3 1/2	9/16	3 1/2	●	●	△	△	◆	
RSIN 9/16x4	9/16	4	●	●	△	△	◆	
RSIN 9/16x6	9/16	6	●	●	△	△	◆	
RSIN 5/8x3	5/8	3	●	●	△	△	◆	
RSIN 5/8x3 1/2	5/8	3 1/2	●	●	△	△	◆	
RSIN 5/8x4	5/8	4	●	●	△	△	◆	
RSIN 5/8x5	5/8	5	●	●	△	△	◆	
RSIN 5/8x6	5/8	6	●	●	△	△	◆	
RSIN 5/8x8	5/8	8	●	●	△	△	◆	
RSIN 3/4x4	3/4	4	●	●	△	△	◆	
RSIN 3/4x5	3/4	5	●	●	△	△	◆	
RSIN 3/4x6	3/4	6	●	●	△	△	◆	
RSIN 3/4x8	3/4	8	●	●	△	△	◆	
RSIN 7/8x4	7/8	4	●	●	△	△	◆	
RSIN 7/8x6	7/8	6	●	●	△	△	◆	
RSIN 1x3	1	3	●	●	△	△	◆	
RSIN 1x4	1	4	●	●	△	△	◆	
RSIN 1x5	1	5	●	●	△	△	◆	
RSIN 1x6	1	6	●	●	△	△	◆	
RSIN 1 1/4x4	1 1/4	4						
RSIN 1 1/4x6	1 1/4	6						
RSIN 1 1/2x6	1 1/2	6						

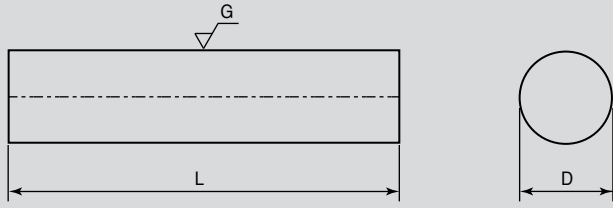
- : Stock item
- △ : Limited stock or on request
- ◆ : New products



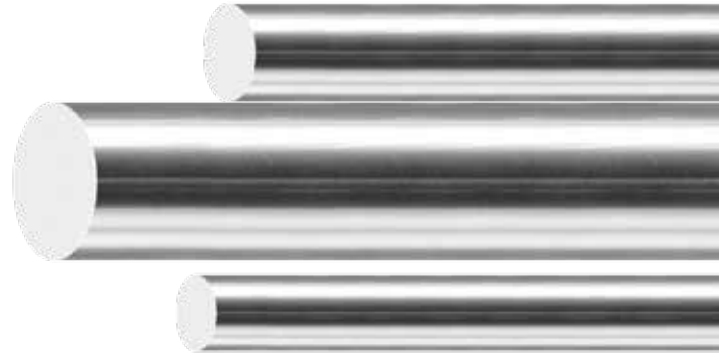
# WITHOUT COOLANT HOLE GROUND RODS



# Ground Long - 320mm ISO h6



D(mm)	Tolerance(mm)	L(mm)	Tolerance(mm)
All Types	h6	310 < L	+6.0

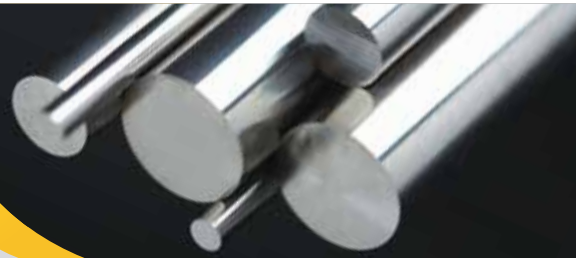
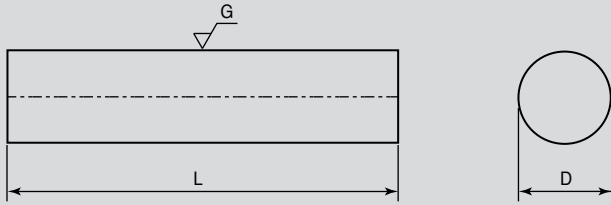


## RG Metric Type

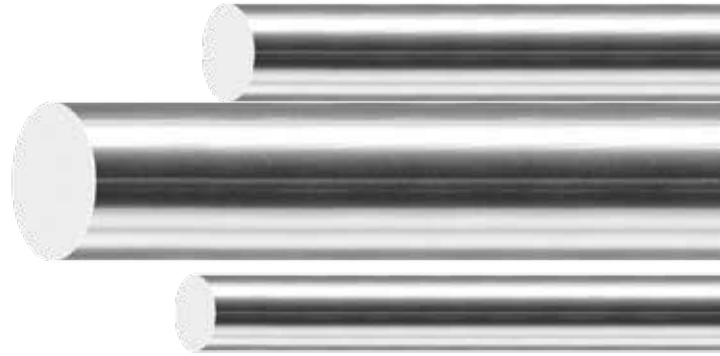
Ordering Code	Dimension		Grade					
	D(mm)	L(mm)	UF10	UF12	UF10N	UF09	UF1	K20
RG 020000 3200	2.0	320	△	△	△	△	◆	△
RG 030000 3200	3.0	320	△	△	△	△	◆	△
RG 040000 3200	4.0	320	△	△	△	△	◆	△
RG 050000 3200	5.0	320	△	△	△	△	◆	△
RG 060000 3200	6.0	320	△	△	△	△	◆	△
RG 070000 3200	7.0	320	△	△	△	△	◆	△
RG 080000 3200	8.0	320	△	△	△	△	◆	△
RG 090000 3200	9.0	320	△	△	△	△	◆	△
RG 100000 3200	10.0	320	△	△	△	△	◆	△
RG 110000 3200	11.0	320	△	△	△	△	◆	△
RG 120000 3200	12.0	320	△	△	△	△	◆	△
RG 130000 3200	13.0	320	△	△	△	△	◆	△
RG 140000 3200	14.0	320	△	△	△	△	◆	△
RG 150000 3200	15.0	320	△	△	△	△	◆	△
RG 160000 3200	16.0	320	△	△	△	△	◆	△
RG 170000 3200	17.0	320	△	△	△	△	◆	△
RG 180000 3200	18.0	320	△	△	△	△	◆	△
RG 190000 3200	19.0	320	△	△	△	△	◆	△
RG 200000 3200	20.0	320	△	△	△	△	◆	△
RG 210000 3200	21.0	320	△	△	△	△	◆	△
RG 220000 3200	22.0	320	△	△	△	△	◆	△
RG 230000 3200	23.0	320	△	△	△	△	◆	△
RG 240000 3200	24.0	320	△	△	△	△	◆	△
RG 250000 3200	25.0	320	△	△	△	△	◆	△
RG 260000 3200	26.0	320						
RG 280000 3200	28.0	320						
RG 300000 3200	30.0	320						
RG 320000 3200	32.0	320						

- : Stock item
- △ : Limited stock or on request
- ◆ : New products

# Ground Long - 320mm ISO h6



D (inch)	Tolerance (inch)	L (inch)	Tolerance (inch)
All Types	h6	12 1/2 ≤ L	+0.236

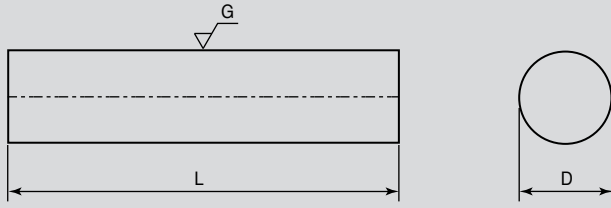


## RG Inch Type

Ordering Code	Dimension		Grade					
	D(inch)	L(inch)	UF10	UF12	UF10N	UF09	UF1	K20
RG 1/8x12 1/2	1/8	12 1/2	△	△	△	△	◆	△
RG 3/16x12 1/2	3/16	12 1/2	△	△	△	△	◆	△
RG 1/4x12 1/2	1/4	12 1/2	△	△	△	△	◆	△
RG 5/16x12 1/2	5/16	12 1/2	△	△	△	△	◆	△
RG 11/32x12 1/2	11/32	12 1/2	△	△	△	△	◆	△
RG 3/8x12 1/2	3/8	12 1/2	△	△	△	△	◆	△
RG 13/32x12 1/2	13/32	12 1/2	△	△	△	△	◆	△
RG 7/16x12 1/2	7/16	12 1/2	△	△	△	△	◆	△
RG 1/2x12 1/2	1/2	12 1/2	△	△	△	△	◆	△
RG 9/16x12 1/2	9/16	12 1/2	△	△	△	△	◆	△
RG 5/8x12 1/2	5/8	12 1/2	△	△	△	△	◆	△
RG 11/16x12 1/2	11/16	12 1/2	△	△	△	△	◆	△
RG 3/4x12 1/2	3/4	12 1/2	△	△	△	△	◆	△
RG 7/8x12 1/2	7/8	12 1/2	△	△	△	△	◆	△
RG 1x12 1/2	1	12 1/2	△	△	△	△	◆	△
RG 1 1/4x12 1/2	1 1/4	12 1/2						
RG 1 1/2x12 1/2	1 1/2	12 1/2						

- : Stock item
- △ : Limited stock or on request
- ◆ : New products

# Ground Long - 330mm ISO h6



D(mm)	Tolerance(mm)	L(mm)	Tolerance(mm)
All Types	h6	310 < L	+6.0

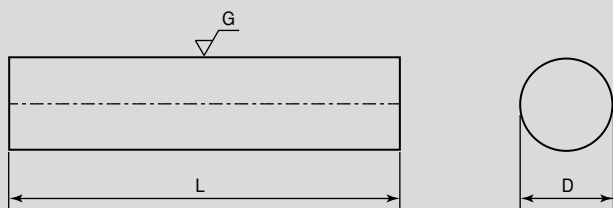


## RG Metric Type

Ordering Code	Dimension		Grade					
	D(mm)	L(mm)	UF10	UF12	UF10N	UF09	UF1	K20
RG 020000 3300	2.0	330	●	●	△	△	◆	△
RG 030000 3300	3.0	330	●	●	△	△	◆	△
RG 040000 3300	4.0	330	●	●	△	△	◆	△
RG 050000 3300	5.0	330	●	●	△	△	◆	△
RG 060000 3300	6.0	330	●	●	△	△	◆	△
RG 070000 3300	7.0	330	●	●	△	△	◆	△
RG 080000 3300	8.0	330	●	●	△	△	◆	△
RG 090000 3300	9.0	330	●	●	△	△	◆	△
RG 100000 3300	10.0	330	●	●	△	△	◆	△
RG 110000 3300	11.0	330	●	●	△	△	◆	△
RG 120000 3300	12.0	330	●	●	△	△	◆	△
RG 130000 3300	13.0	330	●	●	△	△	◆	△
RG 140000 3300	14.0	330	●	●	△	△	◆	△
RG 150000 3300	15.0	330	●	●	△	△	◆	△
RG 160000 3300	16.0	330	●	●	△	△	◆	△
RG 170000 3300	17.0	330	●	●	△	△	◆	△
RG 180000 3300	18.0	330	●	●	△	△	◆	△
RG 190000 3300	19.0	330	●	●	△	△	◆	△
RG 200000 3300	20.0	330	●	●	△	△	◆	△
RG 210000 3300	21.0	330	●	●	△	△	◆	△
RG 220000 3300	22.0	330	●	●	△	△	◆	△
RG 230000 3300	23.0	330	●	●	△	△	◆	△
RG 240000 3300	24.0	330	●	●	△	△	◆	△
RG 250000 3300	25.0	330	●	●	△	△	◆	△
RG 260000 3300	26.0	330						
RG 280000 3300	28.0	330						
RG 300000 3300	30.0	330						
RG 320000 3300	32.0	330						

- : Stock item
- △ : Limited stock or on request
- ◆ : New products

# Ground Long - 330mm ISO h6



D (inch)	Tolerance (inch)	L (inch)	Tolerance (inch)
All Types	h6	12 1/2 ≤ L	+0.236

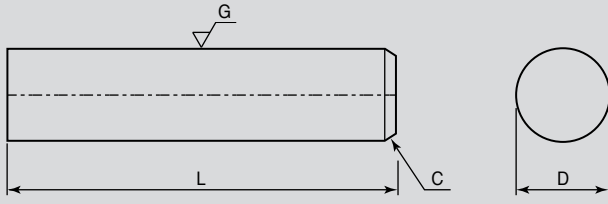


## RG Inch Type

Ordering Code	Dimension		Grade					
	D(inch)	L(inch)	UF10	UF12	UF10N	UF09	UF1	K20
RG 1/8x13	1/8	13	●	●	△	△	◆	△
RG 3/16x13	3/16	13	●	●	△	△	◆	△
RG 1/4x13	1/4	13	●	●	△	△	◆	△
RG 5/16x13	5/16	13	●	●	△	△	◆	△
RG 11/32x13	11/32	13	●	●	△	△	◆	△
RG 3/8x13	3/8	13	●	●	△	△	◆	△
RG 13/32x13	13/32	13	●	●	△	△	◆	△
RG 7/16x13	7/16	13	●	●	△	△	◆	△
RG 1/2x13	1/2	13	●	●	△	△	◆	△
RG 9/16x13	9/16	13	●	●	△	△	◆	△
RG 5/8x13	5/8	13	●	●	△	△	◆	△
RG 11/16x13	11/16	13	●	●	△	△	◆	△
RG 3/4x13	3/4	13	●	●	△	△	◆	△
RG 7/8x13	7/8	13	●	●	△	△	◆	△
RG 1x13	1	13	●	●	△	△	◆	△
RG 1 1/4x13	1 1/4	13						
RG 1 1/2x13	1 1/2	13						

- : Stock item
- △ : Limited stock or on request
- ◆ : New products

# Ground Cut-to-length - ISO h6



D (mm)	Tolerance (mm)	L (mm)	Tolerance (mm)
All Types	h6	L ≤ 50	+0.8
		50 < L ≤ 100	+1.5
		100 < L ≤ 160	+2.0
		160 < L ≤ 250	+3.0

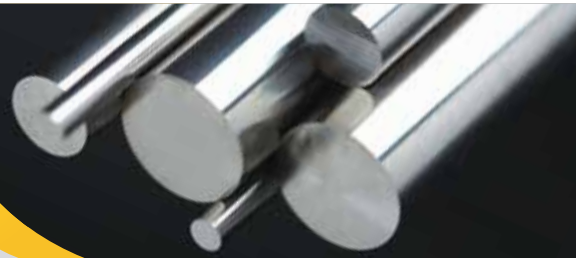
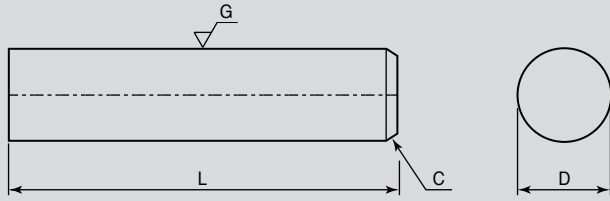


## RGMC Metric Type

Ordering Code	Dimension			Grade					
	D(mm)	L(mm)	C(mm)	UF10	UF12	UF10N	UF09	UF1	K20
RGMC 030000 0390	3.0	39.0	0.3	△	△	△	△	◆	
RGMC 030000 0610	3.0	61.0	0.3	△	△	△	△	◆	
RGMC 030000 0650	3.0	65.0	0.3	△	△	△	△	◆	
RGMC 040000 0400	4.0	40.0	0.5	△	△	△	△	◆	
RGMC 040000 0450	4.0	45.0	0.5	△	△	△	△	◆	
RGMC 040000 0510	4.0	51.0	0.5	△	△	△	△	◆	
RGMC 040000 0600	4.0	60.0	0.5	△	△	△	△	◆	
RGMC 050000 0380	5.0	38.0	0.5	△	△	△	△	◆	
RGMC 050000 0510	5.0	51.0	0.5	△	△	△	△	◆	
RGMC 050000 0580	5.0	58.0	0.5	△	△	△	△	◆	
RGMC 050000 0630	5.0	63.0	0.5	△	△	△	△	◆	
RGMC 050000 0762	5.0	76.2	0.5	△	△	△	△	◆	
RGMC 060000 0460	6.0	46.0	0.5	△	△	△	△	◆	
RGMC 060000 0500	6.0	50.0	0.5	△	△	△	△	◆	
RGMC 060000 0530	6.0	53.0	0.5	△	△	△	△	◆	
RGMC 060000 0550	6.0	55.0	0.5	△	△	△	△	◆	
RGMC 060000 0580	6.0	58.0	0.5	△	△	△	△	◆	
RGMC 060000 0600	6.0	60.0	0.5	△	△	△	△	◆	
RGMC 060000 0630	6.0	63.0	0.5	△	△	△	△	◆	
RGMC 060000 0660	6.0	66.0	0.5	△	△	△	△	◆	
RGMC 060000 0680	6.0	68.0	0.5	△	△	△	△	◆	
RGMC 060000 0700	6.0	70.0	0.5	△	△	△	△	◆	
RGMC 060000 0750	6.0	75.0	0.5	△	△	△	△	◆	
RGMC 060000 0800	6.0	80.0	0.5	△	△	△	△	◆	
RGMC 060000 1010	6.0	101.0	0.5	△	△	△	△	◆	
RGMC 070000 0610	7.0	61.0	0.5	△	△	△	△	◆	

- : Stock item
- △ : Limited stock or on request
- ◆ : New products

# Ground Cut-to-length - ISO h6



D (mm)	Tolerance (mm)	L (mm)	Tolerance (mm)
All Types	h6	L ≤ 50	+0.8
		50 < L ≤ 100	+1.5
		100 < L ≤ 160	+2.0
		160 < L ≤ 250	+3.0

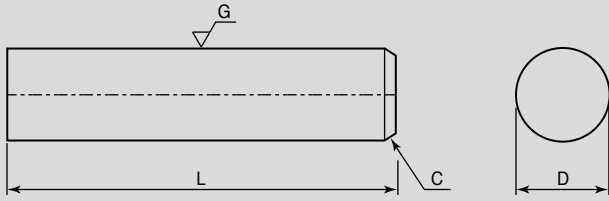


## RGMC Metric Type

Ordering Code	Dimension			Grade					
	D(mm)	L(mm)	C(mm)	UF10	UF12	UF10N	UF09	UF1	K20
RGMC 080000 0500	8.0	50.0	1.0	△	△	△	△	◆	
RGMC 080000 0610	8.0	61.0	1.0	△	△	△	△	◆	
RGMC 080000 0650	8.0	65.0	1.0	△	△	△	△	◆	
RGMC 080000 0700	8.0	70.0	1.0	△	△	△	△	◆	
RGMC 080000 0750	8.0	75.0	1.0	△	△	△	△	◆	
RGMC 080000 0790	8.0	79.0	1.0	△	△	△	△	◆	
RGMC 080000 0900	8.0	90.0	1.0	△	△	△	△	◆	
RGMC 080000 1010	8.0	101.0	1.0	△	△	△	△	◆	
RGMC 100000 0650	10.0	65.0	1.0	△	△	△	△	◆	
RGMC 100000 0680	10.0	68.0	1.0	△	△	△	△	◆	
RGMC 100000 0710	10.0	71.0	1.0	△	△	△	△	◆	
RGMC 100000 0730	10.0	73.0	1.0	△	△	△	△	◆	
RGMC 100000 0810	10.0	81.0	1.0	△	△	△	△	◆	
RGMC 100000 0890	10.0	89.0	1.0	△	△	△	△	◆	
RGMC 100000 1010	10.0	101.0	1.0	△	△	△	△	◆	
RGMC 120000 0650	12.0	65.0	1.0	△	△	△	△	◆	
RGMC 120000 0760	12.0	76.0	1.0	△	△	△	△	◆	
RGMC 120000 0840	12.0	84.0	1.0	△	△	△	△	◆	
RGMC 120000 1010	12.0	101.0	1.0	△	△	△	△	◆	
RGMC 120000 1120	12.0	112.0	1.0	△	△	△	△	◆	
RGMC 140000 0840	14.0	84.0	1.0	△	△	△	△	◆	
RGMC 140000 1080	14.0	108.0	1.0	△	△	△	△	◆	
RGMC 160000 0930	16.0	93.0	1.5	△	△	△	△	◆	
RGMC 160000 1010	16.0	101.0	1.5	△	△	△	△	◆	
RGMC 160000 1160	16.0	116.0	1.5	△	△	△	△	◆	
RGMC 200000 1050	20.0	105.0	1.5	△	△	△	△	◆	
RGMC 200000 1110	20.0	111.0	1.5	△	△	△	△	◆	
RGMC 200000 1260	20.0	126.0	1.5	△	△	△	△	◆	
RGMC 200000 1510	20.0	151.0	1.5	△	△	△	△	◆	
RGMC 250000 1810	25.0	181.0	1.5	△	△	△	△	◆	

- : Stock item
- △ : Limited stock or on request
- ◆ : New products

# Ground Cut-to-length - ISO h6



D (inch)	Tolerance (inch)	L (inch)	Tolerance (inch)
All Types	h6	L ≤ 2.0	+0.032
		2.0 < L ≤ 4.0	+0.059
		4.0 < L ≤ 6.3	+0.079
		6.3 < L ≤ 9.8	+0.012



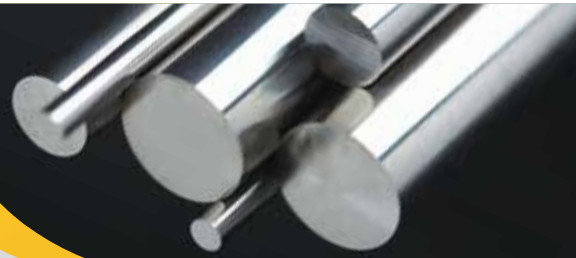
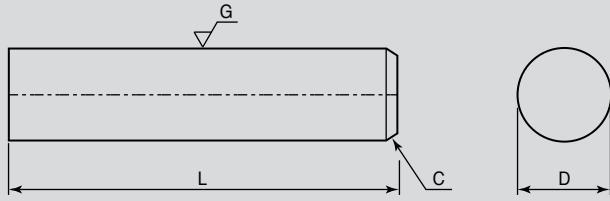
## RGIC Inch Type

Ordering Code	Dimension			Grade					
	D(inch)	L(inch)	C(inch)	UF10	UF12	UF10N	UF09	UF1	K20
RGIC 7/64x2 1/4	7/64	2 1/4	0.012	△	△	△	△	◆	
RGIC 1/8x1 1/2	1/8	1 1/2	0.012	△	△	△	△	◆	
RGIC 1/8x2	1/8	2	0.012	△	△	△	△	◆	
RGIC 1/8x2 1/2	1/8	2 1/2	0.012	△	△	△	△	◆	
RGIC 1/8x3	1/8	3	0.012	△	△	△	△	◆	
RGIC 1/8x4	1/8	4	0.012	△	△	△	△	◆	
RGIC 3/16x1 1/2	3/16	1 1/2	0.02	△	△	△	△	◆	
RGIC 3/16x2	3/16	2	0.02	△	△	△	△	◆	
RGIC 3/16x2 1/2	3/16	2 1/2	0.02	△	△	△	△	◆	
RGIC 3/16x3	3/16	3	0.02	△	△	△	△	◆	
RGIC 3/16x4	3/16	4	0.02	△	△	△	△	◆	
RGIC 3/16x6	3/16	6	0.02	△	△	△	△	◆	
RGIC 1/4x2	1/4	2	0.02	△	△	△	△	◆	
RGIC 1/4x2 1/2	1/4	2 1/2	0.02	△	△	△	△	◆	
RGIC 1/4x3	1/4	3	0.02	△	△	△	△	◆	
RGIC 1/4x3 1/4	1/4	3 1/4	0.02	△	△	△	△	◆	
RGIC 1/4x4	1/4	4	0.02	△	△	△	△	◆	
RGIC 1/4x6	1/4	6	0.02	△	△	△	△	◆	
RGIC 5/16x2	5/16	2	0.039	△	△	△	△	◆	
RGIC 5/16x2 1/2	5/16	2 1/2	0.039	△	△	△	△	◆	
RGIC 5/16x3	5/16	3	0.039	△	△	△	△	◆	
RGIC 5/16x3 1/2	5/16	3 1/2	0.039	△	△	△	△	◆	
RGIC 5/16x4	5/16	4	0.039	△	△	△	△	◆	
RGIC 5/16x6	5/16	6	0.039	△	△	△	△	◆	
RGIC 3/8x2	3/8	2	0.039	△	△	△	△	◆	
RGIC 3/8x2 1/2	3/8	2 1/2	0.039	△	△	△	△	◆	
RGIC 3/8x3	3/8	3	0.039	△	△	△	△	◆	
RGIC 3/8x3 1/2	3/8	3 1/2	0.039	△	△	△	△	◆	
RGIC 3/8x4	3/8	4	0.039	△	△	△	△	◆	
RGIC 3/8x5	3/8	5	0.039	△	△	△	△	◆	
RGIC 3/8x6	3/8	6	0.039	△	△	△	△	◆	
RGIC 7/16x2 1/2	7/16	2 1/2	0.039	△	△	△	△	◆	
RGIC 7/16x2 3/4	7/16	2 3/4	0.039	△	△	△	△	◆	
RGIC 7/16x3	7/16	3	0.039	△	△	△	△	◆	
RGIC 7/16x4	7/16	4	0.039	△	△	△	△	◆	
RGIC 7/16x6	7/16	6	0.039	△	△	△	△	◆	

- : Stock item
- △ : Limited stock or on request
- ◆ : New products



# Ground Cut-to-length - ISO h6



D (inch)	Tolerance (inch)	L (inch)	Tolerance (inch)
All Types	h6	$L \leq 2.0$	+0.032
		$2.0 < L \leq 4.0$	+0.059
		$4.0 < L \leq 6.3$	+0.079
		$6.3 < L \leq 9.8$	+0.012

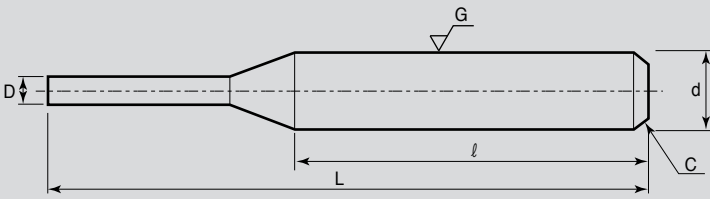


## RGIC Inch Type

Ordering Code	Dimension			Grade					
	D(inch)	L(inch)	C(inch)	UF10	UF12	UF10N	UF09	UF1	K20
RGIC 1/2x2 1/2	1/2	2 1/2	0.039	△	△	△	△	◆	
RGIC 1/2x3	1/2	3	0.039	△	△	△	△	◆	
RGIC 1/2x3 1/2	1/2	3 1/2	0.039	△	△	△	△	◆	
RGIC 1/2x4	1/2	4	0.039	△	△	△	△	◆	
RGIC 1/2x4 1/2	1/2	4 1/2	0.039	△	△	△	△	◆	
RGIC 1/2x5	1/2	5	0.039	△	△	△	△	◆	
RGIC 1/2x6	1/2	6	0.039	△	△	△	△	◆	
RGIC 1/2x8	1/2	8	0.039	△	△	△	△	◆	
RGIC 9/16x3	9/16	3	0.039	△	△	△	△	◆	
RGIC 9/16x3 1/2	9/16	3 1/2	0.039	△	△	△	△	◆	
RGIC 9/16x4	9/16	4	0.039	△	△	△	△	◆	
RGIC 9/16x6	9/16	6	0.039	△	△	△	△	◆	
RGIC 5/8x3	5/8	3	0.059	△	△	△	△	◆	
RGIC 5/8x3 1/2	5/8	3 1/2	0.059	△	△	△	△	◆	
RGIC 5/8x4	5/8	4	0.059	△	△	△	△	◆	
RGIC 5/8x5	5/8	5	0.059	△	△	△	△	◆	
RGIC 5/8x6	5/8	6	0.059	△	△	△	△	◆	
RGIC 5/8x8	5/8	8	0.059	△	△	△	△	◆	
RGIC 3/4x4	3/4	4	0.059	△	△	△	△	◆	
RGIC 3/4x5	3/4	5	0.059	△	△	△	△	◆	
RGIC 3/4x6	3/4	6	0.059	△	△	△	△	◆	
RGIC 3/4x8	3/4	8	0.059	△	△	△	△	◆	
RGIC 7/8x4	7/8	4	0.059	△	△	△	△	◆	
RGIC 7/8x6	7/8	6	0.059	△	△	△	△	◆	
RGIC 1x3	1	3	0.078	△	△	△	△	◆	
RGIC 1x4	1	4	0.078	△	△	△	△	◆	
RGIC 1x5	1	5	0.078	△	△	△	△	◆	
RGIC 1x6	1	6	0.078	△	△	△	△	◆	
RGIC 1 1/4x4	1 1/4	4	0.078						
RGIC 1 1/4x6	1 1/4	6	0.078						
RGIC 1 1/2x6	1 1/2	6	0.078						

- : Stock item
- △ : Limited stock or on request
- ◆ : New products

# Ground Rod



D (mm)	Tolerance (mm)	L (mm)	Tolerance (mm)
d	h6	l	+0.4
D	+0.1	L	+1.0

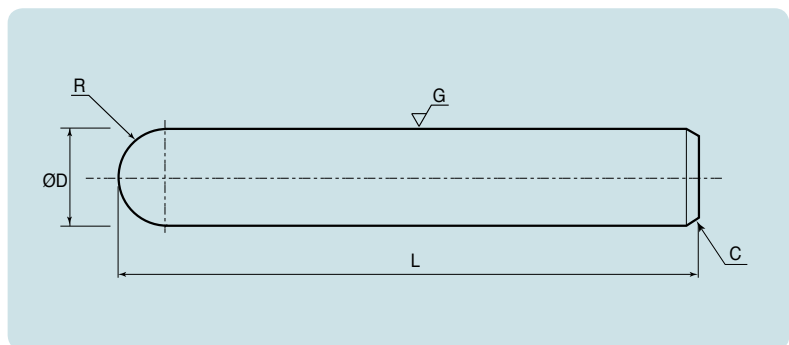


## RGSMC Metric Type

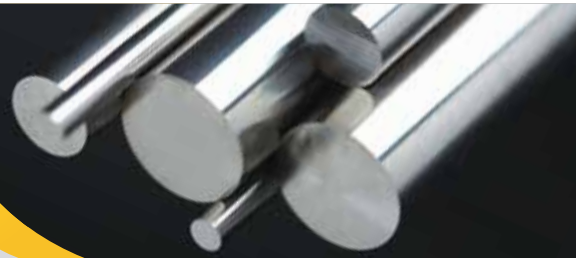
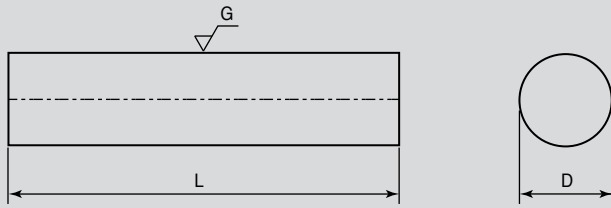
Ordering Code	Dimension					Grade			
	D(mm)	d(mm)	L(mm)	l(mm)	C(mm)	UF10	UF12	UF10N	UF1
RGSMC 02060 0510	2.0	6.0	51.0	36.00	0.4	△	△	△	
RGSMC 02560 0430	2.5	6.0	43.4	29.26	0.4	△	△	△	
RGSMC 02560 0510	2.5	6.0	51.0	36.00	0.4	△	△	△	
RGSMC 03060 0510	3.0	6.0	51.0	36.00	0.4	△	△	△	
RGSMC 03560 0510	3.5	6.0	51.0	36.00	0.4	△	△	△	
RGSMC 04060 0470	4.0	6.0	47.7	31.21	0.4	△	△	△	
RGSMC 04060 0550	4.0	6.0	55.0	36.00	0.4	△	△	△	
RGSMC 04560 0510	4.5	6.0	51.0	36.00	0.4	△	△	△	
RGSMC 04560 0550	4.5	6.0	55.0	36.00	0.4	△	△	△	
RGSMC 05060 0550	5.0	6.0	55.0	36.00	0.4	△	△	△	

- : Stock item
- △ : Limited stock or on request
- ◆ : New products

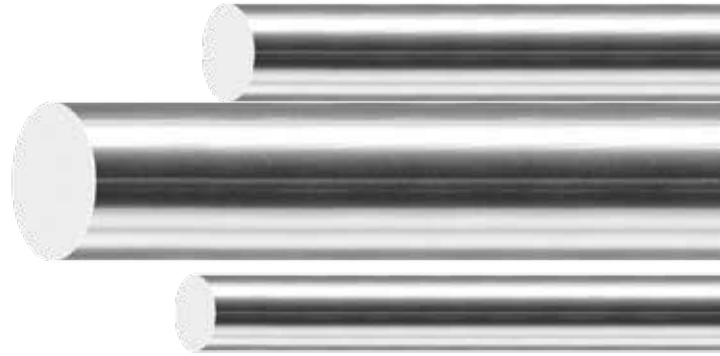
On request, we supply special rod blanks with your specification.



# Ground Long - 320mm ISO h5 New!



D(mm)	Tolerance(mm)	L(mm)	Tolerance(mm)
All Types	h5	310 < L	+6.0

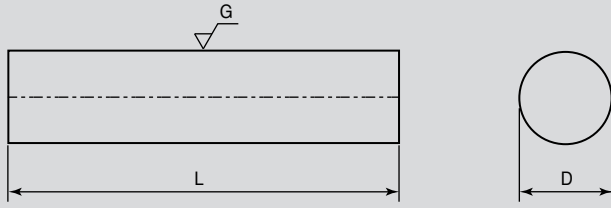


## RP Metric Type

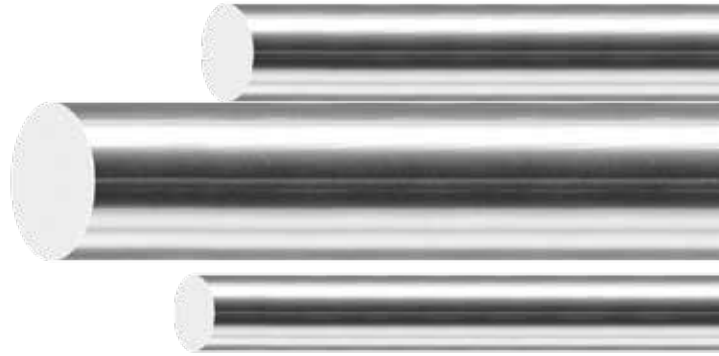
Ordering Code	Dimension		Grade					
	D(mm)	L(mm)	UF10	UF12	UF10N	UF09	UF1	K20
RP 020000 3200	2.0	320						
RP 030000 3200	3.0	320						
RP 040000 3200	4.0	320						
RP 050000 3200	5.0	320						
RP 060000 3200	6.0	320						
RP 070000 3200	7.0	320						
RP 080000 3200	8.0	320						
RP 090000 3200	9.0	320						
RP 100000 3200	10.0	320						
RP 110000 3200	11.0	320						
RP 120000 3200	12.0	320						
RP 130000 3200	13.0	320						
RP 140000 3200	14.0	320						
RP 150000 3200	15.0	320						
RP 160000 3200	16.0	320						
RP 170000 3200	17.0	320						
RP 180000 3200	18.0	320						
RP 190000 3200	19.0	320						
RP 200000 3200	20.0	320						
RP 210000 3200	21.0	320						
RP 220000 3200	22.0	320						
RP 230000 3200	23.0	320						
RP 240000 3200	24.0	320						
RP 250000 3200	25.0	320						
RP 260000 3200	26.0	320						
RP 280000 3200	28.0	320						
RP 300000 3200	30.0	320						
RP 320000 3200	32.0	320						

\* All the RP items will be on request

# Ground Long - 320mm ISO h5 New!



D (inch)	Tolerance (inch)	L (inch)	Tolerance (inch)
All Types	h5	12 1/2 ≤ L	+0.236

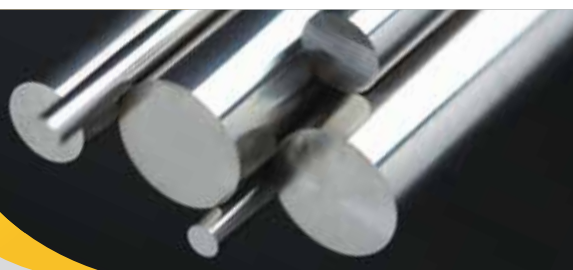
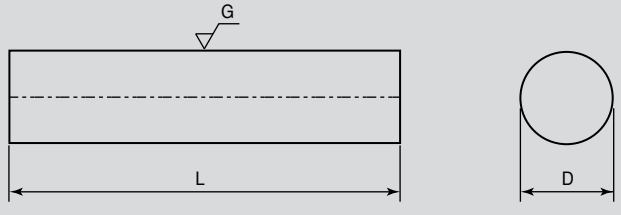


## RP Inch Type

Ordering Code	Dimension		Grade					
	D(inch)	L(inch)	UF10	UF12	UF10N	UF09	UF1	K20
RP 1/8x12 1/2	1/8	12 1/2						
RP 3/16x12 1/2	3/16	12 1/2						
RP 1/4x12 1/2	1/4	12 1/2						
RP 5/16x12 1/2	5/16	12 1/2						
RP 11/32x12 1/2	11/32	12 1/2						
RP 3/8x12 1/2	3/8	12 1/2						
RP 13/32x12 1/2	13/32	12 1/2						
RP 7/16x12 1/2	7/16	12 1/2						
RP 1/2x12 1/2	1/2	12 1/2						
RP 9/16x12 1/2	9/16	12 1/2						
RP 5/8x12 1/2	5/8	12 1/2						
RP 11/16x12 1/2	11/16	12 1/2						
RP 3/4x12 1/2	3/4	12 1/2						
RP 7/8x12 1/2	7/8	12 1/2						
RP 1x12 1/2	1	12 1/2						
RP 1 1/4x12 1/2	1 1/4	12 1/2						
RP 1 1/2x12 1/2	1 1/2	12 1/2						

\* All the RP items will be on request

# Ground Long - 330mm ISO h5 New!



D(mm)	Tolerance(mm)	L(mm)	Tolerance(mm)
All Types	h5	310 < L	+6.0

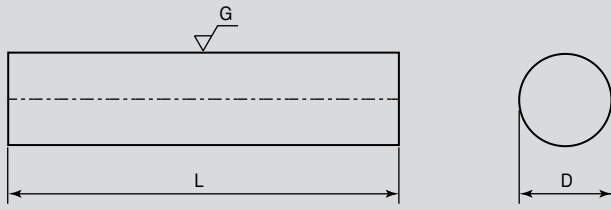


## RP Metric Type

Ordering Code	Dimension		Grade					
	D(mm)	L(mm)	UF10	UF12	UF10N	UF09	UF1	K20
RP 020000 3300	2.0	330						
RP 030000 3300	3.0	330						
RP 040000 3300	4.0	330						
RP 050000 3300	5.0	330						
RP 060000 3300	6.0	330						
RP 070000 3300	7.0	330						
RP 080000 3300	8.0	330						
RP 090000 3300	9.0	330						
RP 100000 3300	10.0	330						
RP 110000 3300	11.0	330						
RP 120000 3300	12.0	330						
RP 130000 3300	13.0	330						
RP 140000 3300	14.0	330						
RP 150000 3300	15.0	330						
RP 160000 3300	16.0	330						
RP 170000 3300	17.0	330						
RP 180000 3300	18.0	330						
RP 190000 3300	19.0	330						
RP 200000 3300	20.0	330						
RP 210000 3300	21.0	330						
RP 220000 3300	22.0	330						
RP 230000 3300	23.0	330						
RP 240000 3300	24.0	330						
RP 250000 3300	25.0	330						
RP 260000 3300	26.0	330						
RP 280000 3300	28.0	330						
RP 300000 3300	30.0	330						
RP 320000 3300	32.0	330						

\* All the RP items will be on request

# Ground Long - 330mm ISO h5 New!



D (inch)	Tolerance (inch)	L (inch)	Tolerance (inch)
All Types	h5	12 1/2 ≤ L	+0.236

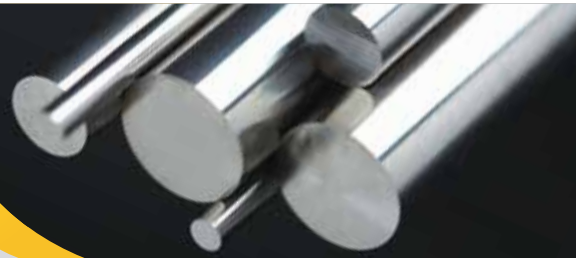
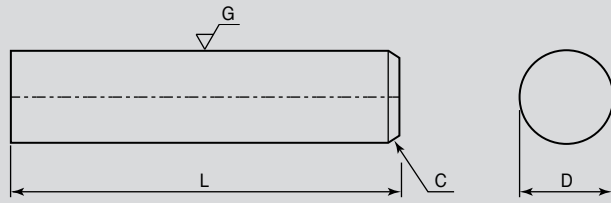


## RP Inch Type

Ordering Code	Dimension		Grade					
	D(inch)	L(inch)	UF10	UF12	UF10N	UF09	UF1	K20
RP 1/8x13	1/8	13						
RP 3/16x13	3/16	13						
RP 1/4x13	1/4	13						
RP 5/16x13	5/16	13						
RP 11/32x13	11/32	13						
RP 3/8x13	3/8	13						
RP 13/32x13	13/32	13						
RP 7/16x13	7/16	13						
RP 1/2x13	1/2	13						
RP 9/16x13	9/16	13						
RP 5/8x13	5/8	13						
RP 11/16x13	11/16	13						
RP 3/4x13	3/4	13						
RP 7/8x13	7/8	13						
RP 1x13	1	13						
RP 1 1/4x13	1 1/4	13						
RP 1 1/2x13	1 1/2	13						

\* All the RP items will be on request

# Ground Cut-to-length - ISO h5 New!



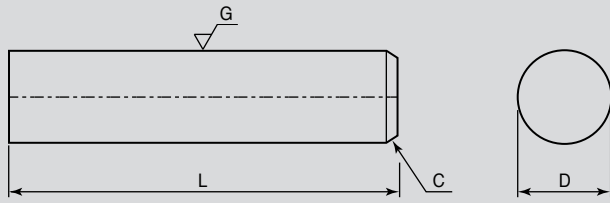
D (mm)	Tolerance (mm)	L (mm)	Tolerance (mm)
All Types	h5	L ≤ 50	+0.8
		50 < L ≤ 100	+1.5
		100 < L ≤ 160	+2.0
		160 < L ≤ 250	+3.0



## RPMC Metric Type

Ordering Code	Dimension			Grade					
	D(mm)	L(mm)	C(mm)	UF10	UF12	UF10N	UF09	UF1	K20
RPMC 030000 0390	3.0	39.0	0.3						
RPMC 030000 0610	3.0	61.0	0.3						
RPMC 030000 0650	3.0	65.0	0.3						
RPMC 040000 0400	4.0	40.0	0.5						
RPMC 040000 0450	4.0	45.0	0.5						
RPMC 040000 0510	4.0	51.0	0.5						
RPMC 040000 0600	4.0	60.0	0.5						
RPMC 050000 0380	5.0	38.0	0.5						
RPMC 050000 0510	5.0	51.0	0.5						
RPMC 050000 0580	5.0	58.0	0.5						
RPMC 050000 0630	5.0	63.0	0.5						
RPMC 050000 0762	5.0	76.2	0.5						
RPMC 060000 0460	6.0	46.0	0.5						
RPMC 060000 0500	6.0	50.0	0.5						
RPMC 060000 0530	6.0	53.0	0.5						
RPMC 060000 0550	6.0	55.0	0.5						
RPMC 060000 0580	6.0	58.0	0.5						
RPMC 060000 0600	6.0	60.0	0.5						
RPMC 060000 0630	6.0	63.0	0.5						
RPMC 060000 0660	6.0	66.0	0.5						
RPMC 060000 0680	6.0	68.0	0.5						
RPMC 060000 0700	6.0	70.0	0.5						
RPMC 060000 0750	6.0	75.0	0.5						
RPMC 060000 0800	6.0	80.0	0.5						
RPMC 060000 1010	6.0	101.0	0.5						
RPMC 070000 0610	7.0	61.0	0.5						

# Ground Cut-to-length - ISO h5 New!



D (mm)	Tolerance (mm)	L (mm)	Tolerance (mm)
All Types	h5	L ≤ 50	+0.8
		50 < L ≤ 100	+1.5
		100 < L ≤ 160	+2.0
		160 < L ≤ 250	+3.0

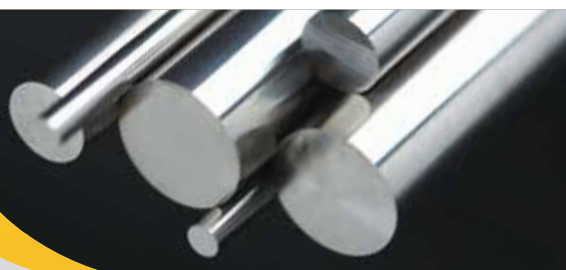
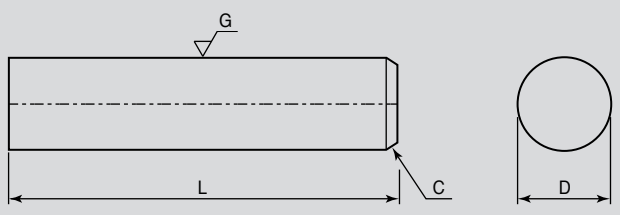


## RPMC Metric Type

Ordering Code	Dimension			Grade					
	D(mm)	L(mm)	C(mm)	UF10	UF12	UF10N	UF09	UF1	K20
RPMC 080000 0500	8.0	50	1.0						
RPMC 080000 0610	8.0	61	1.0						
RPMC 080000 0650	8.0	65	1.0						
RPMC 080000 0700	8.0	70	1.0						
RPMC 080000 0750	8.0	75	1.0						
RPMC 080000 0790	8.0	79	1.0						
RPMC 080000 0900	8.0	90	1.0						
RPMC 080000 1010	8.0	101	1.0						
RPMC 100000 0650	10.0	65	1.0						
RPMC 100000 0680	10.0	68	1.0						
RPMC 100000 0710	10.0	71	1.0						
RPMC 100000 0730	10.0	73	1.0						
RPMC 100000 0810	10.0	81	1.0						
RPMC 100000 0890	10.0	89	1.0						
RPMC 100000 1010	10.0	101	1.0						
RPMC 120000 0650	12.0	65	1.0						
RPMC 120000 0760	12.0	76	1.0						
RPMC 120000 0840	12.0	84	1.0						
RPMC 120000 1010	12.0	101	1.0						
RPMC 120000 1120	12.0	112	1.0						
RPMC 140000 0840	14.0	84	1.0						
RPMC 140000 1080	14.0	108	1.0						
RPMC 160000 0930	16.0	93	1.5						
RPMC 160000 1010	16.0	101	1.5						
RPMC 160000 1160	16.0	116	1.5						
RPMC 200000 1050	20.0	105	1.5						
RPMC 200000 1110	20.0	111	1.5						
RPMC 200000 1260	20.0	126	1.5						
RPMC 200000 1510	20.0	151	1.5						
RPMC 250000 1810	25.0	181	1.5						



# Ground Cut-to-length - ISO h5 New!



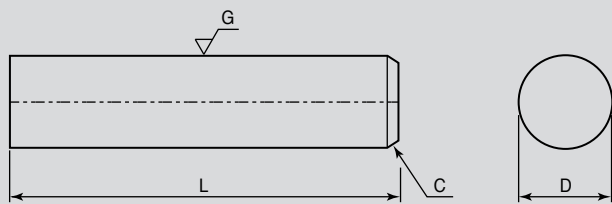
D (inch)	Tolerance (inch)	L (inch)	Tolerance (inch)
All Types	h5	L ≤ 2.0	+0.032
		2.0 < L ≤ 4.0	+0.059
		4.0 < L ≤ 6.3	+0.079
		6.3 < L ≤ 9.8	+0.012



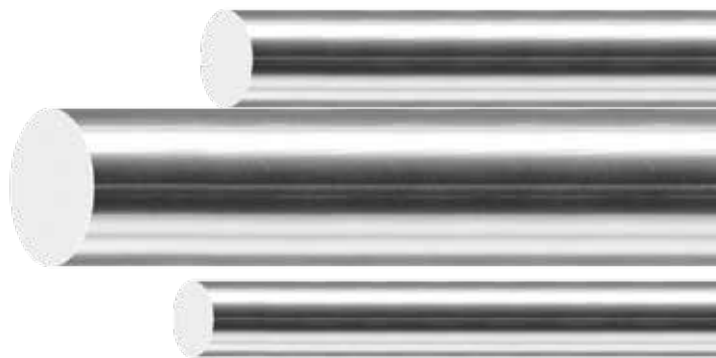
## RPIC Inch Type

Ordering Code	Dimension			Grade					
	D(inch)	L(inch)	C(inch)	UF10	UF12	UF10N	UF09	UF1	K20
RPIC 7/64x2 1/4	7/64	2 1/4	0.012						
RPIC 1/8x1 1/2	1/8	1 1/2	0.012						
RPIC 1/8x2	1/8	2	0.012						
RPIC 1/8x2 1/2	1/8	2 1/2	0.012						
RPIC 1/8x3	1/8	3	0.012						
RPIC 1/8x4	1/8	4	0.012						
RPIC 3/16x1 1/2	3/16	1 1/2	0.02						
RPIC 3/16x2	3/16	2	0.02						
RPIC 3/16x2 1/2	3/16	2 1/2	0.02						
RPIC 3/16x3	3/16	3	0.02						
RPIC 3/16x4	3/16	4	0.02						
RPIC 3/16x6	3/16	6	0.02						
RPIC 1/4x2	1/4	2	0.02						
RPIC 1/4x2 1/2	1/4	2 1/2	0.02						
RPIC 1/4x3	1/4	3	0.02						
RPIC 1/4x3 1/4	1/4	3 1/4	0.02						
RPIC 1/4x4	1/4	4	0.02						
RPIC 1/4x6	1/4	6	0.02						
RPIC 5/16x2	5/16	2	0.039						
RPIC 5/16x2 1/2	5/16	2 1/2	0.039						
RPIC 5/16x3	5/16	3	0.039						
RPIC 5/16x3 1/2	5/16	3 1/2	0.039						
RPIC 5/16x4	5/16	4	0.039						
RPIC 5/16x6	5/16	6	0.039						
RPIC 3/8x2	3/8	2	0.039						
RPIC 3/8x2 1/2	3/8	2 1/2	0.039						
RPIC 3/8x3	3/8	3	0.039						
RPIC 3/8x3 1/2	3/8	3 1/2	0.039						
RPIC 3/8x4	3/8	4	0.039						
RPIC 3/8x5	3/8	5	0.039						
RPIC 3/8x6	3/8	6	0.039						
RPIC 7/16x2 1/2	7/16	2 1/2	0.039						
RPIC 7/16x2 3/4	7/16	2 3/4	0.039						
RPIC 7/16x3	7/16	3	0.039						
RPIC 7/16x4	7/16	4	0.039						
RPIC 7/16x6	7/16	6	0.039						

# Ground Cut-to-length - ISO h5



D (inch)	Tolerance (inch)	L (inch)	Tolerance (inch)
All Types	h5	$L \leq 2.0$	+0.032
		$2.0 < L \leq 4.0$	+0.059
		$4.0 < L \leq 6.3$	+0.079
		$6.3 < L \leq 9.8$	+0.012



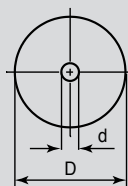
## RPIC Inch Type

Ordering Code	Dimension			Grade					
	D(inch)	L(inch)	C(inch)	UF10	UF12	UF10N	UF09	UF1	K20
RPIC 1/2x2 1/2	1/2	2 1/2	0.039						
RPIC 1/2x3	1/2	3	0.039						
RPIC 1/2x3 1/2	1/2	3 1/2	0.039						
RPIC 1/2x4	1/2	4	0.039						
RPIC 1/2x4 1/2	1/2	4 1/2	0.039						
RPIC 1/2x5	1/2	5	0.039						
RPIC 1/2x6	1/2	6	0.039						
RPIC 1/2x8	1/2	8	0.039						
RPIC 9/16x3	9/16	3	0.039						
RPIC 9/16x3 1/2	9/16	3 1/2	0.039						
RPIC 9/16x4	9/16	4	0.039						
RPIC 9/16x6	9/16	6	0.039						
RPIC 5/8x3	5/8	3	0.059						
RPIC 5/8x3 1/2	5/8	3 1/2	0.059						
RPIC 5/8x4	5/8	4	0.059						
RPIC 5/8x5	5/8	5	0.059						
RPIC 5/8x6	5/8	6	0.059						
RPIC 5/8x8	5/8	8	0.059						
RPIC 3/4x4	3/4	4	0.059						
RPIC 3/4x5	3/4	5	0.059						
RPIC 3/4x6	3/4	6	0.059						
RPIC 3/4x8	3/4	8	0.059						
RPIC 7/8x4	7/8	4	0.059						
RPIC 7/8x6	7/8	6	0.059						
RPIC 1x3	1	3	0.078						
RPIC 1x4	1	4	0.078						
RPIC 1x5	1	5	0.078						
RPIC 1x6	1	6	0.078						
RPIC 1 1/4x4	1 1/4	4	0.078						
RPIC 1 1/4x6	1 1/4	6	0.078						
RPIC 1 1/2x6	1 1/2	6	0.078						

# WITH COOLANT HOLE RODS



# Unground - 1 Straight Coolant Hole - 320mm



D(mm)	Tolerance(mm)	L(mm)	Tolerance(mm)
$D \leq 5$	-0.1/+0.3	310 < L	+6.0
$5 < D \leq 20$	+0.4		
$20 < D$	+0.6		



## RS1S Metric Type

Ordering Code	Dimension				Grade			
	D(mm)	d(mm)	Tol.	L(mm)	UF10	UF12	UF10N	UF09
RS1S 0430 3200	4.3	0.6	±0.15	320	△	△		
RS1S 0630 3200	6.3	1.0	±0.15	320	△	△		
RS1S 0730 3200	7.3	1.2	±0.15	320	△	△		
RS1S 0830 3200	8.3	1.2	±0.15	320	△	△		
RS1S 0930 3200	9.3	1.6	±0.20	320	△	△		
RS1S 1030 3200	10.3	1.6	±0.20	320	△	△		
RS1S 1230 3200	12.3	2.0	±0.20	320	△	△		
RS1S 1430 3200	14.3	2.5	±0.20	320	△	△		
RS1S 1630 3200	16.3	3.0	±0.25	320	△	△		
RS1S 1830 3200	18.3	3.0	±0.25	320	△	△		
RS1S 2030 3200	20.3	3.0	±0.25	320	△	△		

- : Stock item
- △ : Limited stock or on request
- ◆ : New products

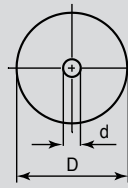
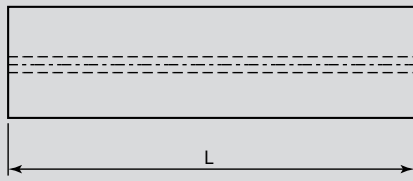
D(inch)	Tolerance(inch)	L(inch)	Tolerance(inch)
$D \leq 0.197$	+0.012	12 1/2 ≤ L	+0.236
$0.197 < D \leq 0.787$	+0.016		
$0.787 < D$	+0.024		

## RS1S Inch Type

Ordering Code	Dimension				Grade			
	D(inch)	d(inch)	Tol.(inch)	L(inch)	UF10	UF12	UF10N	UF09
RS1S 1/4x12 1/2	1/4	0.039	±0.006	12 1/2	△	△		
RS1S 9/32x12 1/2	9/32	0.039	±0.006	12 1/2	△	△		
RS1S 5/16x12 1/2	5/16	0.047	±0.006	12 1/2	△	△		
RS1S 25/64x12 1/2	25/64	0.063	±0.008	12 1/2	△	△		
RS1S 13/32x12 1/2	13/32	0.063	±0.008	12 1/2	△	△		
RS1S 27/64x12 1/2	27/64	0.063	±0.008	12 1/2	△	△		
RS1S 31/64x12 1/2	31/64	0.079	±0.008	12 1/2	△	△		
RS1S 1/2x12 1/2	1/2	0.079	±0.008	12 1/2	△	△		
RS1S 9/16x12 1/2	9/16	0.098	±0.008	12 1/2	△	△		
RS1S 5/8x12 1/2	5/8	0.118	±0.01	12 1/2	△	△		
RS1S 3/4x12 1/2	3/4	0.118	±0.01	12 1/2	△	△		
RS1S 13/16x12 1/2	13/16	0.118	±0.01	12 1/2	△	△		

- : Stock item
- △ : Limited stock or on request
- ◆ : New products

# Unground - 1 Straight Coolant Hole - 330mm



D(mm)	Tolerance(mm)	L(mm)	Tolerance(mm)
$D \leq 5$	-0.1/+0.3	310 < L	+6.0
$5 < D \leq 20$	+0.4		
$20 < D$	+0.6		



## RS1S Metric Type

Ordering Code	Dimension				Grade			
	D(mm)	d(mm)	Tol.	L(mm)	UF10	UF12	UF10N	UF09
RS1S 0430 3300	4.3	0.6	±0.15	330	●	△		
RS1S 0630 3300	6.3	1.0	±0.15	330	●	△		
RS1S 0730 3300	7.3	1.2	±0.15	330	●	△		
RS1S 0830 3300	8.3	1.2	±0.15	330	●	△		
RS1S 0930 3300	9.3	1.6	±0.20	330	●	△		
RS1S 1030 3300	10.3	1.6	±0.20	330	●	△		
RS1S 1230 3300	12.3	2.0	±0.20	330	●	△		
RS1S 1430 3300	14.3	2.5	±0.20	330	●	△		
RS1S 1630 3300	16.3	3.0	±0.25	330	●	△		
RS1S 1830 3300	18.3	3.0	±0.25	330	●	△		
RS1S 2030 3300	20.3	3.0	±0.25	330	●	△		

- : Stock item
- △ : Limited stock or on request
- ◆ : New products

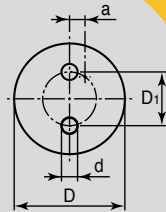
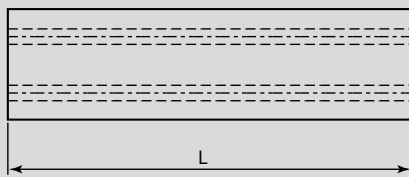
D(inch)	Tolerance(inch)	L(inch)	Tolerance(inch)
$D \leq 0.197$	+0.012	12 1/2 ≤ L	+0.236
$0.197 < D \leq 0.787$	+0.016		
$0.787 < D$	+0.024		

## RS1S Inch Type

Ordering Code	Dimension				Grade			
	D(inch)	d(inch)	Tol.(inch)	L(inch)	UF10	UF12	UF10N	UF09
RS1S 1/4x13	1/4	0.039	±0.006	13	△	△		
RS1S 9/32x13	9/32	0.039	±0.006	13	△	△		
RS1S 5/16x13	5/16	0.047	±0.006	13	△	△		
RS1S 25/64x13	25/64	0.063	±0.008	13	△	△		
RS1S 13/32x13	13/32	0.063	±0.008	13	△	△		
RS1S 27/64x13	27/64	0.063	±0.008	13	△	△		
RS1S 31/64x13	31/64	0.079	±0.008	13	△	△		
RS1S 1/2x13	1/2	0.079	±0.008	13	△	△		
RS1S 9/16x13	9/16	0.098	±0.008	13	△	△		
RS1S 5/8x13	5/8	0.118	±0.01	13	△	△		
RS1S 3/4x13	3/4	0.118	±0.01	13	△	△		
RS1S 13/16x13	13/16	0.118	±0.01	13	△	△		

- : Stock item
- △ : Limited stock or on request
- ◆ : New products

# Unground - 2 Straight Coolant Holes - 320mm



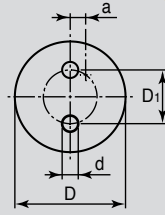
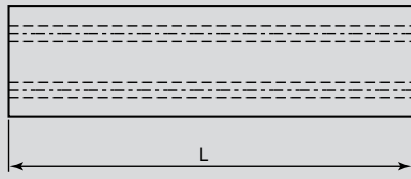
D(mm)	Tolerance(mm)	L(mm)	Tolerance(mm)
D ≤ 5	-0.1/+0.3	310 < L	+6.0
5 < D ≤ 20	+0.4		
20 < D	+0.6		

## RS2S Metric Type

Ordering Code	Dimension							Grade			
	D(mm)	d(mm)	Tol.	D1(mm)	Tol.	a(mm)	L(mm)	UF10	UF12	UF10N	UF09
RS2S 0430 3200 17/08	4.3	0.80	±0.15	1.72	±0.15	0.10	320	△	△		
RS2S 0530 3200 19/08	5.3	0.80	±0.15	1.92	±0.15	0.13	320	△	△		
RS2S 0630 3200 14/08	6.3	0.80	±0.15	1.40	±0.15	0.13	320	△	△		
RS2S 0630 3200 17/07	6.3	0.70	±0.15	1.70	±0.15	0.15	320	△	△		
RS2S 0630 3200 20/10	6.3	1.00	±0.15	2.00	±0.15	0.15	320	△	△		
RS2S 0630 3200 24/10	6.3	1.00	±0.15	2.40	±0.20	0.15	320	△	△		
RS2S 0630 3200 29/10	6.3	1.00	±0.15	2.90	±0.20	0.15	320	△	△		
RS2S 0730 3200 14/08	7.3	0.80	±0.15	1.40	±0.15	0.15	320	△	△		
RS2S 0730 3200 34/10	7.3	1.00	±0.15	3.40	±0.20	0.15	320	△	△		
RS2S 0830 3200 14/08	8.3	0.80	±0.15	1.40	±0.15	0.15	320	△	△		
RS2S 0830 3200 20/10	8.3	1.00	±0.15	2.00	±0.15	0.15	320	△	△		
RS2S 0830 3200 24/10	8.3	1.00	±0.15	2.45	±0.20	0.15	320	△	△		
RS2S 0830 3200 38/10	8.3	1.00	±0.15	3.85	±0.20	0.15	320	△	△		
RS2S 0930 3200 24/10	9.3	1.00	±0.15	2.45	±0.20	0.20	320	△	△		
RS2S 0930 3200 38/14	9.3	1.40	±0.15	3.85	±0.20	0.20	320	△	△		
RS2S 1030 3200 26/10	10.3	1.00	±0.15	2.60	±0.20	0.20	320	△	△		
RS2S 1030 3200 40/14	10.3	1.40	±0.15	4.00	±0.20	0.20	320	△	△		
RS2S 1030 3200 48/14	10.3	1.40	±0.15	4.85	±0.20	0.20	320	△	△		
RS2S 1130 3200 33/12	11.3	1.20	±0.15	3.35	±0.20	0.28	320	△	△		
RS2S 1130 3200 48/14	11.3	1.40	±0.15	4.85	±0.20	0.28	320	△	△		
RS2S 1230 3200 35/15	12.3	1.50	±0.15	3.50	±0.20	0.30	320	△	△		
RS2S 1230 3200 58/17	12.3	1.75	±0.15	5.85	±0.25	0.30	320	△	△		
RS2S 1330 3200 35/15	13.3	1.50	±0.15	3.50	±0.20	0.33	320	△	△		
RS2S 1330 3200 58/17	13.3	1.75	±0.15	5.85	±0.25	0.34	320	△	△		

- : Stock item
- △ : Limited stock or on request
- ◆ : New products

# Unground - 2 Straight Coolant Holes - 320mm



D(mm)	Tolerance(mm)	L(mm)	Tolerance(mm)
$D \leq 5$	-0.1/+0.3	310 < L	+6.0
$5 < D \leq 20$	+0.4		
$20 < D$	+0.6		

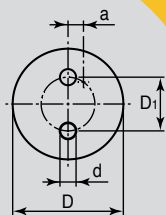
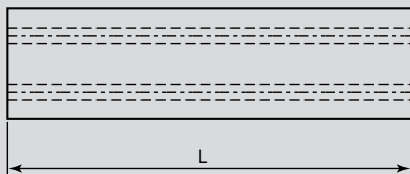


## RS2S Metric Type

Ordering Code	Dimension							Grade			
	D(mm)	d(mm)	Tol.	D1(mm)	Tol.	a(mm)	L(mm)	UF10	UF12	UF10N	UF09
RS2S 1430 3200 50/15	14.3	1.50	±0.15	5.00	±0.20	0.37	320	△	△		
RS2S 1430 3200 68/17	14.3	1.75	±0.15	6.85	±0.25	0.37	320	△	△		
RS2S 1530 3200 50/20	15.3	2.00	±0.15	5.00	±0.20	0.40	320	△	△		
RS2S 1530 3200 68/20	15.3	2.00	±0.15	6.85	±0.25	0.40	320	△	△		
RS2S 1630 3200 48/15	16.3	1.50	±0.15	4.85	±0.20	0.40	320	△	△		
RS2S 1630 3200 50/20	16.3	2.00	±0.15	5.00	±0.20	0.40	320	△	△		
RS2S 1630 3200 78/20	16.3	2.00	±0.15	7.85	±0.25	0.40	320	△	△		
RS2S 1730 3200 62/20	17.3	2.00	±0.15	6.20	±0.25	0.47	320	△	△		
RS2S 1730 3200 78/20	17.3	2.00	±0.15	7.85	±0.25	0.47	320	△	△		
RS2S 1830 3200 62/20	18.3	2.00	±0.15	6.20	±0.25	0.50	320	△	△		
RS2S 1830 3200 88/20	18.3	2.00	±0.15	8.85	±0.25	0.50	320	△	△		
RS2S 1930 3200 62/20	19.3	2.00	±0.15	6.20	±0.25	0.50	320	△	△		
RS2S 1930 3200 88/20	19.3	2.00	±0.15	8.85	±0.25	0.50	320	△	△		
RS2S 2030 3200 62/20	20.3	2.00	±0.15	6.20	±0.25	0.50	320	△	△		
RS2S 2030 3200 98/25	20.3	2.50	±0.20	9.80	±0.30	0.50	320	△	△		
RS2S 2130 3200 62/20	21.3	2.00	±0.15	6.20	±0.25	0.50	320	△	△		
RS2S 2130 3200 98/25	21.3	2.50	±0.20	9.80	±0.30	0.50	320	△	△		
RS2S 2230 3200 62/20	22.3	2.00	±0.15	6.20	±0.25	0.50	320	△	△		
RS2S 2230 3200 108/25	22.3	2.50	±0.20	10.80	±0.30	0.50	320	△	△		
RS2S 2330 3200 73/20	23.3	2.00	±0.15	7.30	±0.25	0.50	320	△	△		
RS2S 2330 3200 108/25	23.3	2.50	±0.20	10.80	±0.30	0.50	320	△	△		
RS2S 2430 3200 73/20	24.3	2.00	±0.15	7.30	±0.25	0.50	320	△	△		
RS2S 2430 3200 117/30	24.3	3.00	±0.25	11.75	±0.30	0.50	320	△	△		
RS2S 2530 3200 73/20	25.3	2.00	±0.15	7.30	±0.25	0.50	320	△	△		
RS2S 2530 3200 117/30	25.3	3.00	±0.25	11.75	±0.30	0.50	320	△	△		
RS2S 2630 3200 130/30	26.3	3.00	±0.25	13.00	±0.30	0.50	320	△	△		
RS2S 2830 3200 140/30	28.3	3.00	±0.25	14.00	±0.30	0.50	320	△	△		
RS2S 3030 3200 140/30	30.3	3.00	±0.25	14.00	±0.30	0.50	320	△	△		
RS2S 3230 3200 140/30	32.3	3.00	±0.25	14.00	±0.30	0.50	320	△	△		

- : Stock item
- △ : Limited stock or on request
- ◆ : New products

# Unground - 2 Straight Coolant Holes - 330mm



D(mm)	Tolerance(mm)	L(mm)	Tolerance(mm)
D ≤ 5	-0.1/+0.3	310 < L	+6.0
5 < D ≤ 20	+0.4		
20 < D	+0.6		

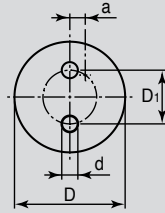
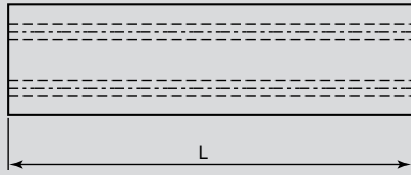
## RS2S Metric Type

Ordering Code	Dimension							Grade			
	D(mm)	d(mm)	Tol.	D1(mm)	Tol.	a(mm)	L(mm)	UF10	UF12	UF10N	UF09
RS2S 0430 3300 17/08	4.3	0.80	±0.15	1.72	±0.15	0.10	330	●	△		
RS2S 0530 3300 19/08	5.3	0.80	±0.15	1.92	±0.15	0.13	330	●	△		
RS2S 0630 3300 14/08	6.3	0.80	±0.15	1.40	±0.15	0.13	330	●	△		
RS2S 0630 3300 17/07	6.3	0.70	±0.15	1.70	±0.15	0.15	330	●	△		
RS2S 0630 3300 20/10	6.3	1.00	±0.15	2.00	±0.15	0.15	330	●	△		
RS2S 0630 3300 24/10	6.3	1.00	±0.15	2.40	±0.20	0.15	330	●	△		
RS2S 0630 3300 29/10	6.3	1.00	±0.15	2.90	±0.20	0.15	330	●	△		
RS2S 0730 3300 14/08	7.3	0.80	±0.15	1.40	±0.15	0.15	330	●	△		
RS2S 0730 3300 34/10	7.3	1.00	±0.15	3.40	±0.20	0.15	330	●	△		
RS2S 0830 3300 14/08	8.3	0.80	±0.15	1.40	±0.15	0.15	330	●	△		
RS2S 0830 3300 20/10	8.3	1.00	±0.15	2.00	±0.15	0.15	330	●	△		
RS2S 0830 3300 24/10	8.3	1.00	±0.15	2.45	±0.20	0.15	330	●	△		
RS2S 0830 3300 38/10	8.3	1.00	±0.15	3.85	±0.20	0.15	330	●	△		
RS2S 0930 3300 24/10	9.3	1.00	±0.15	2.45	±0.20	0.20	330	●	△		
RS2S 0930 3300 38/14	9.3	1.40	±0.15	3.85	±0.20	0.20	330	●	△		
RS2S 1030 3300 26/10	10.3	1.00	±0.15	2.60	±0.20	0.20	330	●	△		
RS2S 1030 3300 40/14	10.3	1.40	±0.15	4.00	±0.20	0.20	330	●	△		
RS2S 1030 3300 48/14	10.3	1.40	±0.15	4.85	±0.20	0.20	330	●	△		
RS2S 1130 3300 33/12	11.3	1.20	±0.15	3.35	±0.20	0.28	330	●	△		
RS2S 1130 3300 48/14	11.3	1.40	±0.15	4.85	±0.20	0.28	330	●	△		
RS2S 1230 3300 35/15	12.3	1.50	±0.15	3.50	±0.20	0.30	330	●	△		
RS2S 1230 3300 58/17	12.3	1.75	±0.15	5.85	±0.25	0.30	330	●	△		
RS2S 1330 3300 35/15	13.3	1.50	±0.15	3.50	±0.20	0.33	330	●	△		
RS2S 1330 3300 58/17	13.3	1.75	±0.15	5.85	±0.25	0.34	330	●	△		

- : Stock item
- △ : Limited stock or on request
- ◆ : New products



# Unground - 2 Straight Coolant Holes - 330mm



D(mm)	Tolerance(mm)	L(mm)	Tolerance(mm)
$D \leq 5$	-0.1/+0.3	310 < L	+6.0
$5 < D \leq 20$	+0.4		
$20 < D$	+0.6		

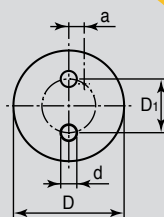
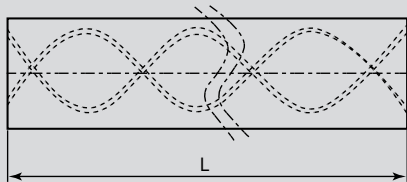


## RS2S Metric Type

Ordering Code	Dimension							Grade			
	D(mm)	d(mm)	Tol.	D1(mm)	Tol.	a(mm)	L(mm)	UF10	UF12	UF10N	UF09
RS2S 1430 3300 50/15	14.3	1.50	±0.15	5.00	±0.20	0.37	330	●	△		
RS2S 1430 3300 68/17	14.3	1.75	±0.15	6.85	±0.25	0.37	330	●	△		
RS2S 1530 3300 50/20	15.3	2.00	±0.15	5.00	±0.20	0.40	330	●	△		
RS2S 1530 3300 68/20	15.3	2.00	±0.15	6.85	±0.25	0.40	330	●	△		
RS2S 1630 3300 48/15	16.3	1.50	±0.15	4.85	±0.20	0.40	330	●	△		
RS2S 1630 3300 50/20	16.3	2.00	±0.15	5.00	±0.20	0.40	330	●	△		
RS2S 1630 3300 78/20	16.3	2.00	±0.15	7.85	±0.25	0.40	330	●	△		
RS2S 1730 3300 62/20	17.3	2.00	±0.15	6.20	±0.25	0.47	330	●	△		
RS2S 1730 3300 78/20	17.3	2.00	±0.15	7.85	±0.25	0.47	330	●	△		
RS2S 1830 3300 62/20	18.3	2.00	±0.15	6.20	±0.25	0.50	330	●	△		
RS2S 1830 3300 88/20	18.3	2.00	±0.15	8.85	±0.25	0.50	330	●	△		
RS2S 1930 3300 62/20	19.3	2.00	±0.15	6.20	±0.25	0.50	330	●	△		
RS2S 1930 3300 88/20	19.3	2.00	±0.15	8.85	±0.25	0.50	330	●	△		
RS2S 2030 3300 62/20	20.3	2.00	±0.15	6.20	±0.25	0.50	330	●	△		
RS2S 2030 3300 98/25	20.3	2.50	±0.20	9.80	±0.30	0.50	330	●	△		
RS2S 2130 3300 62/20	21.3	2.00	±0.15	6.20	±0.25	0.50	330	●	△		
RS2S 2130 3300 98/25	21.3	2.50	±0.20	9.80	±0.30	0.50	330	●	△		
RS2S 2230 3300 62/20	22.3	2.00	±0.15	6.20	±0.25	0.50	330	●	△		
RS2S 2230 3300 108/25	22.3	2.50	±0.20	10.80	±0.30	0.50	330	●	△		
RS2S 2330 3300 73/20	23.3	2.00	±0.15	7.30	±0.25	0.50	330	●	△		
RS2S 2330 3300 108/25	23.3	2.50	±0.20	10.80	±0.30	0.50	330	●	△		
RS2S 2430 3300 73/20	24.3	2.00	±0.15	7.30	±0.25	0.50	330	●	△		
RS2S 2430 3300 117/30	24.3	3.00	±0.25	11.75	±0.30	0.50	330	●	△		
RS2S 2530 3300 73/20	25.3	2.00	±0.15	7.30	±0.25	0.50	330	●	△		
RS2S 2530 3300 117/30	25.3	3.00	±0.25	11.75	±0.30	0.50	330	●	△		
RS2S 2630 3300 130/30	26.3	3.00	±0.25	13.00	±0.30	0.50	330	●	△		
RS2S 2830 3300 140/30	28.3	3.00	±0.25	14.00	±0.30	0.50	330	●	△		
RS2S 3030 3300 140/30	30.3	3.00	±0.25	14.00	±0.30	0.50	330	●	△		
RS2S 3230 3300 140/30	32.3	3.00	±0.25	14.00	±0.30	0.50	330	●	△		

- : Stock item
- △ : Limited stock or on request
- ◆ : New products

# Unground - 2 Spiral Coolant Holes (30°) - 320mm



## High Precision Lead Values

TaeguTec has developed the technology to supply drill manufacturers with extremely accurate lead values or lead angles. For further information, please request IMC's marketing newsletter MNL No. 002.

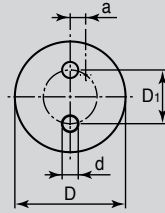
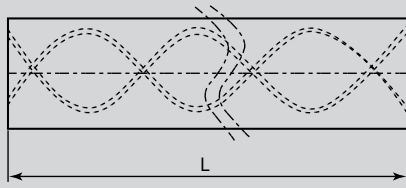
## RS2H 30° Type

Ordering Code	Dimension								Grade	
	D(mm)	d(mm)	Tol.	D1(mm)	Tol.	a(mm)	Lead(mm)	L(mm)	UF10	UF12
RS2H 0430 3200 21/06	4.3	0.60	±0.15	2.1	+0.1/-0.3	0.10	21.77	320	△	
RS2H 0530 3200 22/06	5.3	0.60	±0.15	2.2	+0.1/-0.3	0.13	27.21	320	△	
RS2H 0580 3200 24/07	5.8	0.70	±0.15	2.4	+0.1/-0.3	0.14	29.93	320	△	
RS2H 0630 3200 13/07	6.3	0.70	±0.15	1.3	+0.1/-0.3	0.15	32.65	320	△	
RS2H 0630 3200 19/07	6.3	0.70	±0.15	1.9	+0.1/-0.3	0.15	32.65	320	△	
RS2H 0630 3200 28/09	6.3	0.90	±0.15	2.8	+0.1/-0.3	0.15	32.65	320	△	
RS2H 0630 3200 30/09	6.3	0.90	±0.15	3.0	+0.1/-0.3	0.15	32.65	320	△	
RS2H 0680 3200 32/07	6.8	0.70	±0.15	3.2	+0.1/-0.3	0.15	35.37	320	△	
RS2H 0680 3200 32/10	6.8	1.00	±0.15	3.2	+0.1/-0.3	0.15	35.37	320	△	
RS2H 0730 3200 32/10	7.3	1.00	±0.15	3.2	+0.1/-0.3	0.15	38.09	320	△	
RS2H 0730 3200 35/10	7.3	1.00	±0.15	3.5	+0.1/-0.3	0.15	38.09	320	△	
RS2H 0780 3200 32/10	7.8	1.00	±0.15	3.2	+0.1/-0.3	0.15	40.81	320	△	
RS2H 0830 3200 40/12	8.3	1.20	±0.15	4.0	+0.1/-0.3	0.15	43.53	320	△	
RS2H 0880 3200 40/10	8.8	1.00	±0.15	4.0	+0.1/-0.3	0.20	46.25	320	△	
RS2H 0880 3200 40/12	8.8	1.20	±0.15	4.0	+0.1/-0.3	0.20	46.25	320	△	
RS2H 0930 3200 45/12	9.3	1.20	±0.15	4.5	+0.1/-0.3	0.20	48.97	320	△	
RS2H 0980 3200 45/14	9.8	1.40	±0.15	4.5	+0.1/-0.3	0.20	51.69	320	△	
RS2H 1030 3200 50/15	10.3	1.50	±0.20	5.0	+0.1/-0.4	0.20	54.41	320	△	
RS2H 1080 3200 50/14	10.8	1.40	±0.15	5.0	+0.1/-0.4	0.28	57.13	320	△	
RS2H 1130 3200 55/15	11.3	1.50	±0.20	5.5	+0.1/-0.4	0.28	59.86	320	△	
RS2H 1180 3200 55/14	11.8	1.40	±0.15	5.5	+0.1/-0.4	0.28	62.58	320	△	
RS2H 1230 3200 60/16	12.3	1.60	±0.20	6.0	+0.1/-0.4	0.30	65.30	320	△	
RS2H 1280 3200 60/17	12.8	1.75	±0.20	6.0	+0.1/-0.4	0.33	68.02	320	△	
RS2H 1330 3200 60/16	13.3	1.60	±0.20	6.0	+0.1/-0.4	0.34	70.74	320	△	
RS2H 1380 3200 64/17	13.8	1.75	±0.20	6.4	+0.1/-0.4	0.35	73.46	320	△	

- : Stock item
- △ : Limited stock or on request
- ◆ : New products

**New!**

# Unground - 2 Spiral Coolant Holes (30°) - 320mm



## High Precision Lead Values

TaeguTec has developed the technology to supply drill manufacturers with extremely accurate lead values or lead angles. For further information, please request IMC's marketing newsletter MNL No. 002.

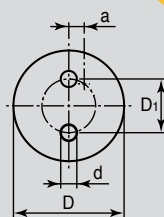
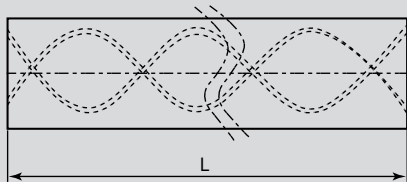


## RS2H 30° Type

Ordering Code	Dimension								Grade	
	D(mm)	d(mm)	Tol.	D1(mm)	Tol.	a(mm)	Lead(mm)	L(mm)	UF10	UF12
RS2H 1430 3200 70/16	14.3	1.60	±0.20	7.0	+0.1/-0.5	0.37	76.18	320	△	
RS2H 1480 3200 70/17	14.8	1.75	±0.20	7.0	+0.1/-0.5	0.40	78.90	320	△	
RS2H 1530 3200 75/17	15.3	1.75	±0.20	7.5	+0.1/-0.5	0.40	81.62	320	△	
RS2H 1580 3200 74/17	15.8	1.75	±0.20	7.4	+0.1/-0.5	0.40	84.34	320	△	
RS2H 1630 3200 80/17	16.3	1.75	±0.20	8.0	+0.1/-0.6	0.40	87.06	320	△	
RS2H 1630 3200 80/22	16.3	2.20	±0.30	8.0	+0.1/-0.6	0.40	87.06	320	△	
RS2H 1680 3200 82/17	16.8	1.75	±0.20	8.2	+0.1/-0.6	0.45	89.78	320	△	
RS2H 1730 3200 82/17	17.3	1.75	±0.20	8.2	+0.1/-0.6	0.47	92.50	320	△	
RS2H 1730 3200 85/22	17.3	2.20	±0.30	8.5	+0.1/-0.6	0.47	92.50	320	△	
RS2H 1780 3200 85/17	17.8	1.75	±0.20	8.5	+0.1/-0.6	0.50	95.22	320	△	
RS2H 1830 3200 90/17	18.3	1.75	±0.20	9.0	+0.1/-0.6	0.50	97.95	320	△	
RS2H 1830 3200 90/24	18.3	2.40	±0.30	9.0	+0.1/-0.6	0.50	97.95	320	△	
RS2H 1880 3200 90/20	18.8	2.00	±0.30	9.0	+0.1/-0.6	0.50	100.67	320	△	
RS2H 1930 3200 95/22	19.3	2.20	±0.30	9.5	+0.1/-0.6	0.50	103.39	320	△	
RS2H 1930 3200 95/24	19.3	2.40	±0.30	9.5	+0.1/-0.6	0.50	103.39	320	△	
RS2H 2030 3200 100/26	20.3	2.60	±0.30	10.0	+0.1/-0.6	0.50	108.83	320	△	
RS2H 2130 3200 100/26	21.3	2.60	±0.30	10.6	+0.1/-0.6	0.50	114.27	320	△	
RS2H 2130 3200 110/26	21.3	2.60	±0.30	11.0	+0.1/-0.6	0.50	114.27	320	△	
RS2H 2230 3200 111/26	22.3	2.60	±0.30	11.1	+0.1/-0.6	0.50	119.71	320	△	
RS2H 2530 3200 125/26	25.3	2.60	±0.30	12.5	+0.1/-0.6	0.50	136.03	320	△	

- : Stock item
- △ : Limited stock or on request
- ◆ : New products

# Unground - 2 Spiral Coolant Holes (30°) - 330mm



## High Precision Lead Values

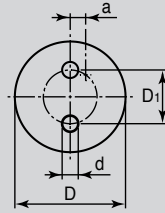
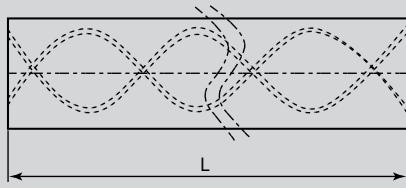
TaeguTec has developed the technology to supply drill manufacturers with extremely accurate lead values or lead angles. For further information, please request IMC's marketing newsletter MNL No. 002.

## RS2H 30° Type

Ordering Code	Dimension								Grade	
	D(mm)	d(mm)	Tol.	D1(mm)	Tol.	a(mm)	Lead(mm)	L(mm)	UF10	UF12
RS2H 0430 3300 21/06	4.3	0.60	±0.15	2.1	+0.1/-0.3	0.10	21.77	330	●	
RS2H 0530 3300 22/06	5.3	0.60	±0.15	2.2	+0.1/-0.3	0.13	27.21	330	●	
RS2H 0580 3300 24/07	5.8	0.70	±0.15	2.4	+0.1/-0.3	0.14	29.93	330	●	
RS2H 0630 3300 13/07	6.3	0.70	±0.15	1.3	+0.1/-0.3	0.15	32.65	330	●	
RS2H 0630 3300 19/07	6.3	0.70	±0.15	1.9	+0.1/-0.3	0.15	32.65	330	●	
RS2H 0630 3300 28/09	6.3	0.90	±0.15	2.8	+0.1/-0.3	0.15	32.65	330	●	
RS2H 0630 3300 30/09	6.3	0.90	±0.15	3.0	+0.1/-0.3	0.15	32.65	330	●	
RS2H 0680 3300 32/07	6.8	0.70	±0.15	3.2	+0.1/-0.3	0.15	35.37	330	●	
RS2H 0680 3300 32/10	6.8	1.00	±0.15	3.2	+0.1/-0.3	0.15	35.37	330	●	
RS2H 0730 3300 32/10	7.3	1.00	±0.15	3.2	+0.1/-0.3	0.15	38.09	330	●	
RS2H 0730 3300 35/10	7.3	1.00	±0.15	3.5	+0.1/-0.3	0.15	38.09	330	●	
RS2H 0780 3300 32/10	7.8	1.00	±0.15	3.2	+0.1/-0.3	0.15	40.81	330	●	
RS2H 0830 3300 40/12	8.3	1.20	±0.15	4.0	+0.1/-0.3	0.15	43.53	330	●	
RS2H 0880 3300 40/10	8.8	1.00	±0.15	4.0	+0.1/-0.3	0.20	46.25	330	●	
RS2H 0880 3300 40/12	8.8	1.20	±0.15	4.0	+0.1/-0.3	0.20	46.25	330	●	
RS2H 0930 3300 45/12	9.3	1.20	±0.15	4.5	+0.1/-0.3	0.20	48.97	330	●	
RS2H 0980 3300 45/14	9.8	1.40	±0.15	4.5	+0.1/-0.3	0.20	51.69	330	●	
RS2H 1030 3300 50/15	10.3	1.50	±0.20	5.0	+0.1/-0.4	0.20	54.41	330	●	
RS2H 1080 3300 50/14	10.8	1.40	±0.15	5.0	+0.1/-0.4	0.28	57.13	330	●	
RS2H 1130 3300 55/15	11.3	1.50	±0.20	5.5	+0.1/-0.4	0.28	59.86	330	●	
RS2H 1180 3300 55/14	11.8	1.40	±0.15	5.5	+0.1/-0.4	0.28	62.58	330	●	
RS2H 1230 3300 60/16	12.3	1.60	±0.20	6.0	+0.1/-0.4	0.30	65.30	330	●	
RS2H 1280 3300 60/17	12.8	1.75	±0.20	6.0	+0.1/-0.4	0.33	68.02	330	●	
RS2H 1330 3300 60/16	13.3	1.60	±0.20	6.0	+0.1/-0.4	0.34	70.74	330	●	
RS2H 1380 3300 64/17	13.8	1.75	±0.20	6.4	+0.1/-0.4	0.35	73.46	330	●	

- : Stock item
- △ : Limited stock or on request
- ◆ : New products

# Unground - 2 Spiral Coolant Holes (30°) - 330mm



## High Precision Lead Values

TaeguTec has developed the technology to supply drill manufacturers with extremely accurate lead values or lead angles. For further information, please request IMC's marketing newsletter MNL No. 002.

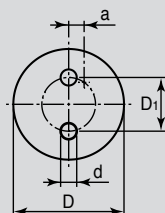
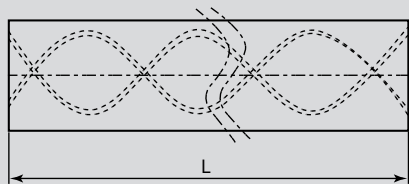


## RS2H 30° Type

Ordering Code	Dimension								Grade	
	D(mm)	d(mm)	Tol.	D1(mm)	Tol.	a(mm)	Lead(mm)	L(mm)	UF10	UF12
RS2H 1430 3300 70/16	14.3	1.60	±0.20	7.0	+0.1/-0.5	0.37	76.18	330	●	
RS2H 1480 3300 70/17	14.8	1.75	±0.20	7.0	+0.1/-0.5	0.40	78.90	330	●	
RS2H 1530 3300 75/17	15.3	1.75	±0.20	7.5	+0.1/-0.5	0.40	81.62	330	●	
RS2H 1580 3300 74/17	15.8	1.75	±0.20	7.4	+0.1/-0.5	0.40	84.34	330	●	
RS2H 1630 3300 80/17	16.3	1.75	±0.30	8.0	+0.1/-0.6	0.40	87.06	330	●	
RS2H 1630 3300 80/22	16.3	2.20	±0.30	8.0	+0.1/-0.6	0.40	87.06	330	●	
RS2H 1680 3300 82/17	16.8	1.75	±0.30	8.2	+0.1/-0.6	0.45	89.78	330	●	
RS2H 1730 3300 82/17	17.3	1.75	±0.30	8.2	+0.1/-0.6	0.47	92.50	330	●	
RS2H 1730 3300 85/22	17.3	2.20	±0.30	8.5	+0.1/-0.6	0.47	92.50	330	●	
RS2H 1780 3300 85/17	17.8	1.75	±0.30	8.5	+0.1/-0.6	0.50	95.22	330	●	
RS2H 1830 3300 90/17	18.3	1.75	±0.30	9.0	+0.1/-0.6	0.50	97.95	330	●	
RS2H 1830 3300 90/24	18.3	2.40	±0.30	9.0	+0.1/-0.6	0.50	97.95	330	●	
RS2H 1880 3300 90/20	18.8	2.00	±0.30	9.0	+0.1/-0.6	0.50	100.67	330	●	
RS2H 1930 3300 95/22	19.3	2.20	±0.30	9.5	+0.1/-0.6	0.50	103.39	330	●	
RS2H 1930 3300 95/24	19.3	2.40	±0.30	9.5	+0.1/-0.6	0.50	103.39	330	●	
RS2H 2030 3300 100/26	20.3	2.60	±0.30	10.0	+0.1/-0.6	0.50	108.83	330	●	
RS2H 2130 3300 100/26	21.3	2.60	±0.30	10.6	+0.1/-0.6	0.50	114.27	330	●	
RS2H 2130 3300 110/26	21.3	2.60	±0.30	11.0	+0.1/-0.6	0.50	114.27	330	●	
RS2H 2230 3300 111/26	22.3	2.60	±0.30	11.1	+0.1/-0.6	0.50	119.71	330	●	
RS2H 2530 3300 125/26	25.3	2.60	±0.30	12.5	+0.1/-0.6	0.50	136.03	330	●	

- : Stock item
- △ : Limited stock or on request
- ◆ : New products

# Unground - 2 Spiral Coolant Holes (40°) - 320mm



## High Precision Lead Values

TaeguTec has developed the technology to supply drill manufacturers with extremely accurate lead values or lead angles. For further information, please request IMC's marketing newsletter MNL No. 002.

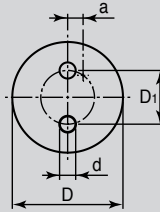
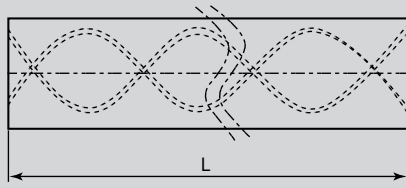


## RS2J 40° Type

Ordering Code	Dimension								Grade	
	D(mm)	d(mm)	Tol.	D1(mm)	Tol.	a(mm)	Lead(mm)	L(mm)	UF10	UF12
RS2J 0630 3200 13/05	6.3	0.50	±0.15	1.3	+0.1/-0.3	0.15	22.46	320	△	
RS2J 0630 3200 22/05	6.3	0.50	±0.15	2.2	+0.1/-0.3	0.15	22.46	320	△	
RS2J 0680 3200 23/05	6.8	0.50	±0.15	2.3	+0.1/-0.3	0.15	24.34	320	△	
RS2J 0730 3200 24/06	7.3	0.65	±0.15	2.4	+0.1/-0.3	0.15	26.21	320	△	
RS2J 0780 3200 24/06	7.8	0.65	±0.15	2.4	+0.1/-0.3	0.15	28.08	320	△	
RS2J 0830 3200 27/06	8.3	0.65	±0.15	2.7	+0.1/-0.3	0.15	29.95	320	△	
RS2J 0880 3200 27/06	8.8	0.65	±0.15	2.7	+0.1/-0.3	0.20	31.82	320	△	
RS2J 0930 3200 32/07	9.3	0.75	±0.15	3.2	+0.1/-0.3	0.20	33.70	320	△	
RS2J 0980 3200 32/07	9.8	0.75	±0.15	3.2	+0.1/-0.3	0.20	35.57	320	△	
RS2J 1030 3200 35/08	10.3	0.80	±0.15	3.5	+0.1/-0.3	0.20	37.44	320	△	
RS2J 1080 3200 35/08	10.8	0.80	±0.15	3.5	+0.1/-0.3	0.28	39.31	320	△	
RS2J 1130 3200 37/08	11.3	0.80	±0.15	3.7	+0.1/-0.3	0.28	41.18	320	△	
RS2J 1180 3200 37/08	11.8	0.80	±0.15	3.7	+0.1/-0.3	0.28	43.06	320	△	
RS2J 1230 3200 42/09	12.3	0.90	±0.15	4.2	+0.1/-0.3	0.30	44.93	320	△	
RS2J 1280 3200 42/09	12.8	0.90	±0.15	4.2	+0.1/-0.3	0.33	46.80	320	△	
RS2J 1330 3200 44/09	13.3	0.90	±0.15	4.4	+0.1/-0.3	0.34	48.67	320	△	
RS2J 1380 3200 44/09	13.8	0.90	±0.15	4.4	+0.1/-0.3	0.35	50.54	320	△	
RS2J 1430 3200 47/10	14.3	1.00	±0.15	4.7	+0.1/-0.3	0.37	52.42	320	△	
RS2J 1480 3200 47/10	14.8	1.00	±0.15	4.7	+0.1/-0.3	0.40	54.29	320	△	
RS2J 1530 3200 51/11	15.3	1.10	±0.15	5.1	+0.1/-0.4	0.40	56.16	320	△	
RS2J 1580 3200 51/11	15.8	1.10	±0.15	5.1	+0.1/-0.4	0.40	58.03	320	△	
RS2J 1630 3200 55/12	16.3	1.20	±0.15	5.5	+0.1/-0.4	0.45	59.90	320	△	
RS2J 1680 3200 55/12	16.8	1.20	±0.15	5.5	+0.1/-0.4	0.46	61.78	320	△	
RS2J 1730 3200 59/12	17.3	1.20	±0.15	5.9	+0.1/-0.4	0.47	63.65	320	△	
RS2J 1780 3200 59/12	17.8	1.20	±0.15	5.9	+0.1/-0.4	0.50	65.52	320	△	
RS2J 1830 3200 63/14	18.3	1.40	±0.15	6.3	+0.1/-0.4	0.50	67.39	320	△	
RS2J 1880 3200 63/14	18.8	1.40	±0.15	6.3	+0.1/-0.4	0.50	69.26	320	△	
RS2J 1930 3200 67/14	19.3	1.40	±0.15	6.7	+0.1/-0.4	0.50	71.14	320	△	
RS2J 2030 3200 67/14	20.3	1.40	±0.15	6.7	+0.1/-0.4	0.50	74.88	320	△	
RS2J 2030 3200 71/15	20.3	1.50	±0.20	7.1	+0.1/-0.5	0.50	74.88	320	△	

- : Stock item
- △ : Limited stock or on request
- ◆ : New products

# Unground - 2 Spiral Coolant Holes (40°) - 330mm



## High Precision Lead Values

TaeguTec has developed the technology to supply drill manufacturers with extremely accurate lead values or lead angles. For further information, please request IMC's marketing newsletter MNL No. 002.

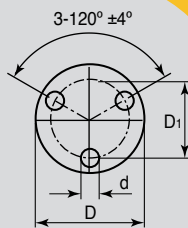
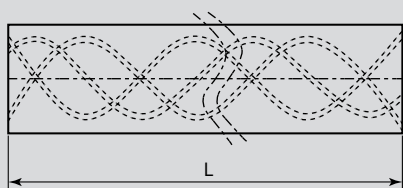


## RS2J 40° Type

Ordering Code	Dimension								Grade	
	D(mm)	d(mm)	Tol.	D1(mm)	Tol.	a(mm)	Lead(mm)	L mm)	UF10	UF12
RS2J 0630 330013/05	6.3	0.50	±0.15	1.3	+0.1/-0.3	0.15	22.46	330	•	
RS2J 0630 3300 22/05	6.3	0.50	±0.15	2.2	+0.1/-0.3	0.15	22.46	330	•	
RS2J 0680 3300 23/05	6.8	0.50	±0.15	2.3	+0.1/-0.3	0.15	24.34	330	•	
RS2J 0730 3300 24/06	7.3	0.65	±0.15	2.4	+0.1/-0.3	0.15	26.21	330	•	
RS2J 0780 3300 24/06	7.8	0.65	±0.15	2.4	+0.1/-0.3	0.15	28.08	330	•	
RS2J 0830 3300 27/06	8.3	0.65	±0.15	2.7	+0.1/-0.3	0.15	29.95	330	•	
RS2J 0880 3300 27/06	8.8	0.65	±0.15	2.7	+0.1/-0.3	0.20	31.82	330	•	
RS2J 0930 3300 32/07	9.3	0.75	±0.15	3.2	+0.1/-0.3	0.20	33.70	330	•	
RS2J 0980 3300 32/07	9.8	0.75	±0.15	3.2	+0.1/-0.3	0.20	35.57	330	•	
RS2J 1030 3300 35/08	10.3	0.80	±0.15	3.5	+0.1/-0.3	0.20	37.44	330	•	
RS2J 1080 3300 35/08	10.8	0.80	±0.15	3.5	+0.1/-0.3	0.28	39.31	330	•	
RS2J 1130 3300 37/08	11.3	0.80	±0.15	3.7	+0.1/-0.3	0.28	41.18	330	•	
RS2J 1180 3300 37/08	11.8	0.80	±0.15	3.7	+0.1/-0.3	0.28	43.06	330	•	
RS2J 1230 3300 42/09	12.3	0.90	±0.15	4.2	+0.1/-0.3	0.30	44.93	330	•	
RS2J 1280 3300 42/09	12.8	0.90	±0.15	4.2	+0.1/-0.3	0.33	46.80	330	•	
RS2J 1330 3300 44/09	13.3	0.90	±0.15	4.4	+0.1/-0.3	0.34	48.67	330	•	
RS2J 1380 3300 44/09	13.8	0.90	±0.15	4.4	+0.1/-0.3	0.35	50.54	330	•	
RS2J 1430 3300 47/10	14.3	1.00	±0.15	4.7	+0.1/-0.3	0.37	52.42	330	•	
RS2J 1480 3300 47/10	14.8	1.00	±0.15	4.7	+0.1/-0.3	0.40	54.29	330	•	
RS2J 1530 3300 51/11	15.3	1.10	±0.15	5.1	+0.1/-0.4	0.40	56.16	330	•	
RS2J 1580 3300 51/11	15.8	1.10	±0.15	5.1	+0.1/-0.4	0.40	58.03	330	•	
RS2J 1630 3300 55/12	16.3	1.20	±0.15	5.5	+0.1/-0.4	0.45	59.90	330	•	
RS2J 1680 3300 55/12	16.8	1.20	±0.15	5.5	+0.1/-0.4	0.46	61.78	330	•	
RS2J 1730 3300 59/12	17.3	1.20	±0.15	5.9	+0.1/-0.4	0.47	63.65	330	•	
RS2J 1780 3300 59/12	17.8	1.20	±0.15	5.9	+0.1/-0.4	0.50	65.52	330	•	
RS2J 1830 3300 63/14	18.3	1.40	±0.15	6.3	+0.1/-0.4	0.50	67.39	330	•	
RS2J 1880 3300 63/14	18.8	1.40	±0.15	6.3	+0.1/-0.4	0.50	69.26	330	•	
RS2J 1930 3300 67/14	19.3	1.40	±0.15	6.7	+0.1/-0.4	0.50	71.14	330	•	
RS2J 2030 3300 67/14	20.3	1.40	±0.15	6.7	+0.1/-0.4	0.50	74.88	330	•	
RS2J 2030 3300 71/15	20.3	1.50	±0.20	7.1	+0.1/-0.5	0.50	74.88	330	•	

- : Stock item
- △ : Limited stock or on request
- ◆ : New products

# Unground - 3 Spiral Coolant Holes (30°) - 320mm



## High Precision Lead Values

TaeguTec has developed the technology to supply drill manufacturers with extremely accurate lead values or lead angles. For further information, please request IMC's marketing newsletter MNL No. 002.



## RS3H 30° Type

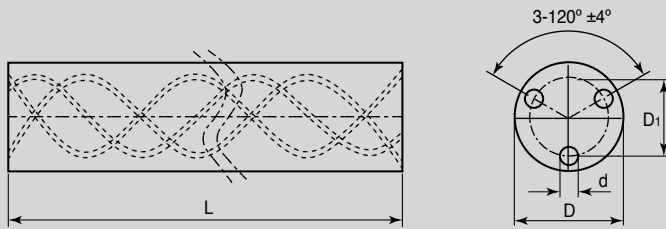
Ordering Code	Dimension						Grade		
	D(mm)	d(mm)	Tol.	D1(mm)	Tol.	Lead(mm)	L(mm)	UF10	UF12
RS3H 0630 3200 30/05	6.3	0.50	±0.15	3.0	+0.1/-0.3	32.65	320	△	
RS3H 0680 3200 30/05	6.8	0.50	±0.15	3.0	+0.1/-0.3	35.37	320	△	
RS3H 0730 3200 35/07	7.3	0.70	±0.15	3.5	+0.1/-0.3	38.09	320	△	
RS3H 0780 3200 35/07	7.8	0.70	±0.15	3.5	+0.1/-0.3	40.81	320	△	
RS3H 0830 3200 40/07	8.3	0.70	±0.15	4.0	+0.1/-0.3	43.53	320	△	
RS3H 0880 3200 40/07	8.8	0.70	±0.15	4.0	+0.1/-0.3	46.25	320	△	
RS3H 0930 3200 45/08	9.3	0.85	±0.15	4.5	+0.1/-0.3	48.97	320	△	
RS3H 0980 3200 45/08	9.8	0.85	±0.15	4.5	+0.1/-0.3	51.69	320	△	
RS3H 1030 3200 50/08	10.3	0.85	±0.15	5.0	+0.1/-0.4	54.41	320	△	
RS3H 1080 3200 50/08	10.8	0.85	±0.15	5.0	+0.1/-0.4	57.13	320	△	
RS3H 1130 3200 55/11	11.3	1.10	±0.15	5.5	+0.1/-0.4	59.86	320	△	
RS3H 1180 3200 55/11	11.8	1.10	±0.15	5.5	+0.1/-0.4	62.58	320	△	
RS3H 1230 3200 60/11	12.3	1.10	±0.15	6.0	+0.1/-0.4	65.30	320	△	
RS3H 1280 3200 60/11	12.8	1.10	±0.15	6.0	+0.1/-0.4	68.02	320	△	
RS3H 1330 3200 60/13	13.3	1.30	±0.15	6.0	+0.1/-0.4	70.74	320	△	
RS3H 1430 3200 70/15	14.3	1.50	±0.20	7.0	+0.1/-0.5	76.18	320	△	
RS3H 1530 3200 75/15	15.3	1.50	±0.20	7.5	+0.1/-0.5	81.62	320	△	
RS3H 1630 3200 80/15	16.3	1.50	±0.20	8.0	+0.1/-0.6	87.06	320	△	
RS3H 1730 3200 85/17	17.3	1.70	±0.20	8.5	+0.1/-0.6	92.50	320	△	
RS3H 1830 3200 90/17	18.3	1.70	±0.20	9.0	+0.1/-0.6	97.95	320	△	
RS3H 1930 3200 95/17	19.3	1.70	±0.20	9.5	+0.1/-0.6	103.39	320	△	
RS3H 2030 3200 100/20	20.3	2.00	±0.30	10.0	+0.1/-0.6	108.83	320	△	
RS3H 2130 3200 106/20	21.3	2.00	±0.30	10.6	+0.1/-0.6	114.27	320	△	
RS3H 2230 3200 111/20	22.3	2.00	±0.30	11.1	+0.1/-0.6	119.71	320	△	

**New!**

- : Stock item
- △ : Limited stock or on request
- ◆ : New products



# Unground - 3 Spiral Coolant Holes (30°) - 330mm



## High Precision Lead Values

TaeguTec has developed the technology to supply drill manufacturers with extremely accurate lead values or lead angles. For further information, please request IMC's marketing newsletter MNL No. 002.

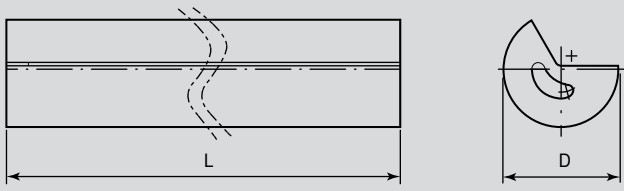


## RS3H 30° Type

Ordering Code	Dimension							Grade	
	D(mm)	d(mm)	Tol.	D1(mm)	Tol.	Lead(mm)	L(mm)	UF10	UF12
RS3H 0630 3300 30/05	6.3	0.50	±0.15	3.0	+0.1/-0.3	32.65	330	●	
RS3H 0680 3300 30/05	6.8	0.50	±0.15	3.0	+0.1/-0.3	35.37	330	●	
RS3H 0730 3300 35/07	7.3	0.70	±0.15	3.5	+0.1/-0.3	38.09	330	●	
RS3H 0780 3300 35/07	7.8	0.70	±0.15	3.5	+0.1/-0.3	40.81	330	●	
RS3H 0830 3300 40/07	8.3	0.70	±0.15	4.0	+0.1/-0.3	43.53	330	●	
RS3H 0880 3300 40/07	8.8	0.70	±0.15	4.0	+0.1/-0.3	46.25	330	●	
RS3H 0930 3300 45/08	9.3	0.85	±0.15	4.5	+0.1/-0.3	48.97	330	●	
RS3H 0980 3300 45/08	9.8	0.85	±0.15	4.5	+0.1/-0.3	51.69	330	●	
RS3H 1030 3300 50/08	10.3	0.85	±0.20	5.0	+0.1/-0.4	54.41	330	●	
RS3H 1080 3300 50/08	10.8	0.85	±0.20	5.0	+0.1/-0.4	57.13	330	●	
RS3H 1130 3300 55/11	11.3	1.10	±0.20	5.5	+0.1/-0.4	59.86	330	●	
RS3H 1180 3300 55/11	11.8	1.10	±0.20	5.5	+0.1/-0.4	62.58	330	●	
RS3H 1230 3300 60/11	12.3	1.10	±0.20	6.0	+0.1/-0.4	65.30	330	●	
RS3H 1280 3300 60/11	12.8	1.10	±0.20	6.0	+0.1/-0.4	68.02	330	●	
RS3H 1330 3300 60/13	13.3	1.30	±0.20	6.0	+0.1/-0.4	70.74	330	●	
RS3H 1430 3300 70/15	14.3	1.50	±0.20	7.0	+0.1/-0.5	76.18	330	●	
RS3H 1530 3300 75/15	15.3	1.50	±0.20	7.5	+0.1/-0.5	81.62	330	●	
RS3H 1630 3300 80/15	16.3	1.50	±0.30	8.0	+0.1/-0.6	87.06	330	●	
RS3H 1730 3300 85/17	17.3	1.70	±0.30	8.5	+0.1/-0.6	92.50	330	●	
RS3H 1830 3300 90/17	18.3	1.70	±0.30	9.0	+0.1/-0.6	97.95	330	●	
RS3H 1930 3300 95/17	19.3	1.70	±0.30	9.5	+0.1/-0.6	103.39	330	●	
RS3H 2030 3300 100/20	20.3	2.00	±0.30	10.0	+0.1/-0.6	108.83	330	●	
RS3H 2130 3300 106/20	21.3	2.00	±0.30	10.6	+0.1/-0.6	114.27	330	●	
RS3H 2230 3300 111/20	22.3	2.00	±0.30	11.1	+0.1/-0.6	119.71	330	●	

- : Stock item
- △ : Limited stock or on request
- ◆ : New products

# Unground - Gun Drill Blanks with 1 Kidney Hole

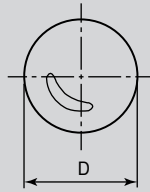
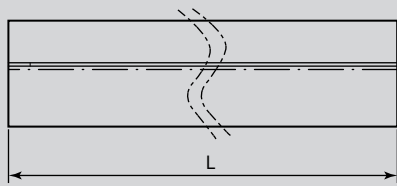


## RS1GK Metric Type

Ordering Code	Dimension		Grade
	D(mm)	L(mm)	K20
RS1GK 0345 3200	3.45	320	•
RS1GK 0390 3200	3.90	320	•
RS1GK 0440 3200	4.40	320	•
RS1GK 0490 3200	4.90	320	•
RS1GK 0550 3200	5.50	320	•
RS1GK 0600 3200	6.00	320	•
RS1GK 0650 3200	6.50	320	•
RS1GK 0710 3200	7.10	320	•
RS1GK 0760 3200	7.60	320	•
RS1GK 0810 3200	8.10	320	•
RS1GK 0870 3200	8.70	320	•

- : Stock item
- △ : Limited stock or on request
- ◆ : New products

# Unground - Gun Drill Blanks with 1 Kidney Hole

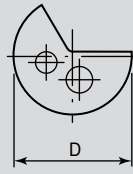
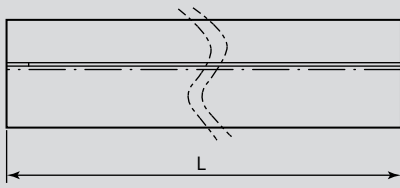


## RS1GKR Metric Type

Ordering Code	Dimension		Grade	
	D(mm)	L(mm)	UF10	K20
RS1GKR 0260 3200	2.60	320	•	
RS1GKR 0290 3200	2.60	320	•	
RS1GKR 0315 3200	3.15	320	•	
RS1GKR 0350 3200	3.50	320	•	
RS1GKR 0390 3200	3.90	320	•	
RS1GKR 0440 3200	4.40	320	•	
RS1GKR 0490 3200	4.90	320	•	
RS1GKR 0550 3200	5.50	320	•	
RS1GKR 0650 3200	6.50	320	•	
RS1GKR 0870 3200	8.70	320	•	
RS1GKR 0920 3200	9.20	320	•	

- : Stock item
- △ : Limited stock or on request
- ◆ : New products

# Unground - Gun Drill Blanks with 2 Round Holes



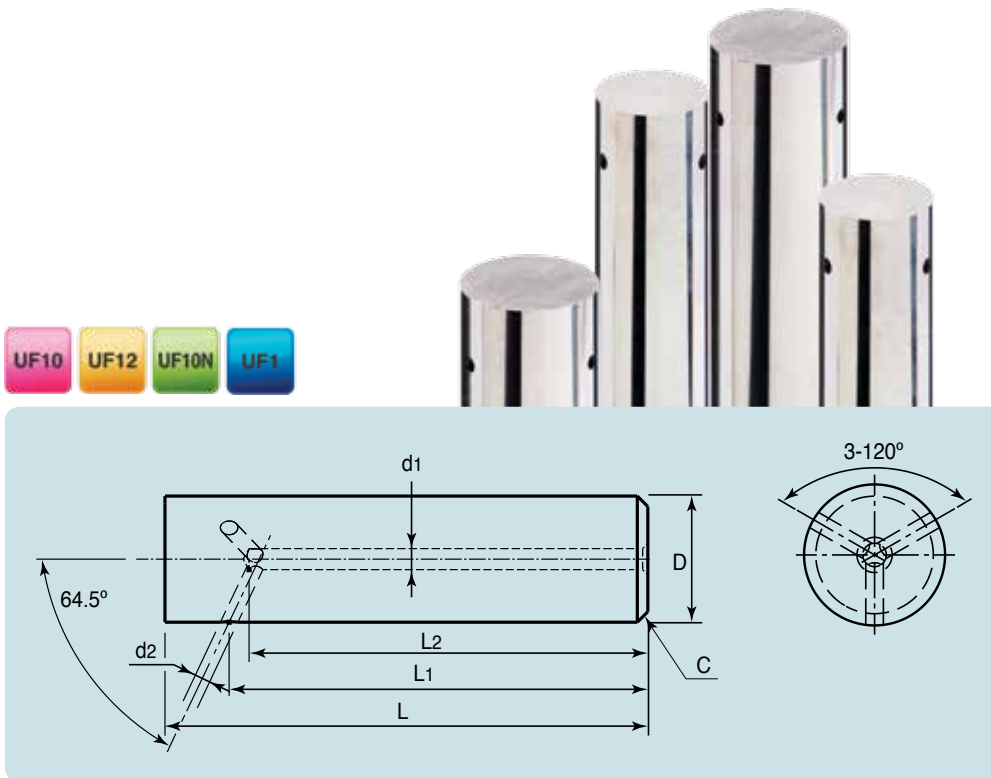
## RS2GR Metric Type

Ordering Code	Dimension		Grade
	D(mm)	L(mm)	K20
RS2GR 0550 3200	5.5	320	•
RS2GR 0600 3200	6.0	320	•
RS2GR 0650 3200	6.5	320	•
RS2GR 0710 3200	7.1	320	•
RS2GR 0760 3200	7.6	320	•
RS2GR 0810 3200	8.1	320	•
RS2GR 0870 3200	8.7	320	•
RS2GR 0920 3200	9.2	320	•
RS2GR 0970 3200	9.7	320	•
RS2GR 1080 3200	10.8	320	•
RS2GR 1180 3200	11.8	320	•
RS2GR 1280 3200	12.8	320	•
RS2GR 1350 3200	13.5	320	•
RS2GR 1450 3200	14.5	320	•
RS2GR 1550 3200	15.5	320	•
RS2GR 1650 3200	16.5	320	•
RS2GR 1960 3200	19.6	320	•

- : Stock item
- △ : Limited stock or on request
- ◆ : New products

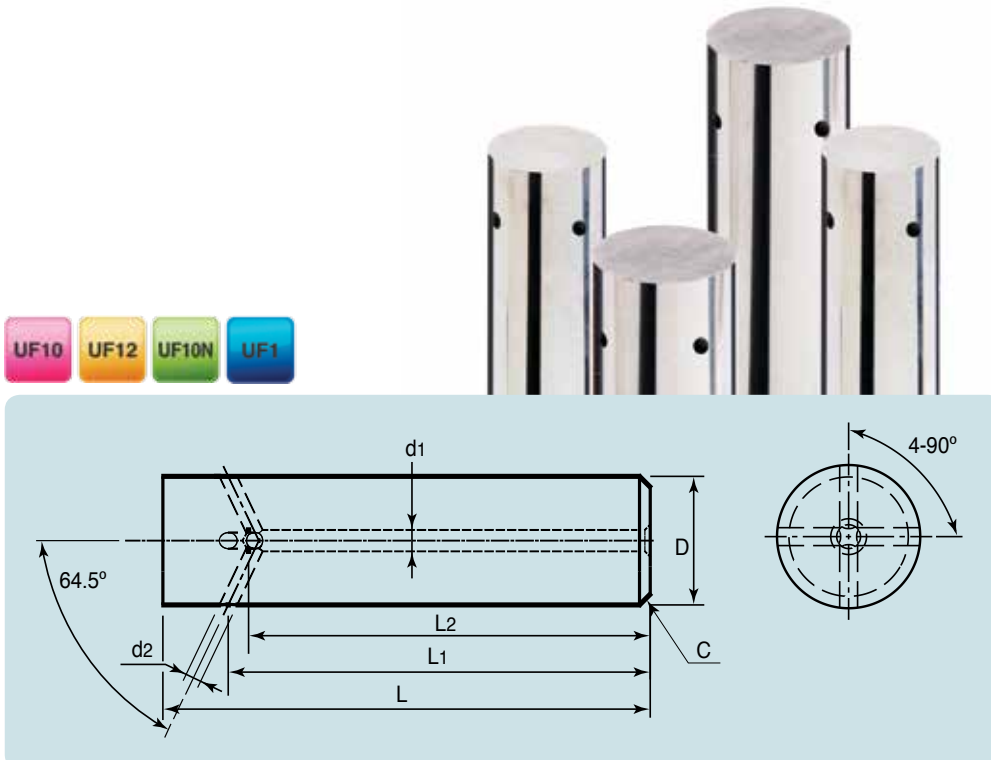
## Axial coolant duct and 3 lateral holes

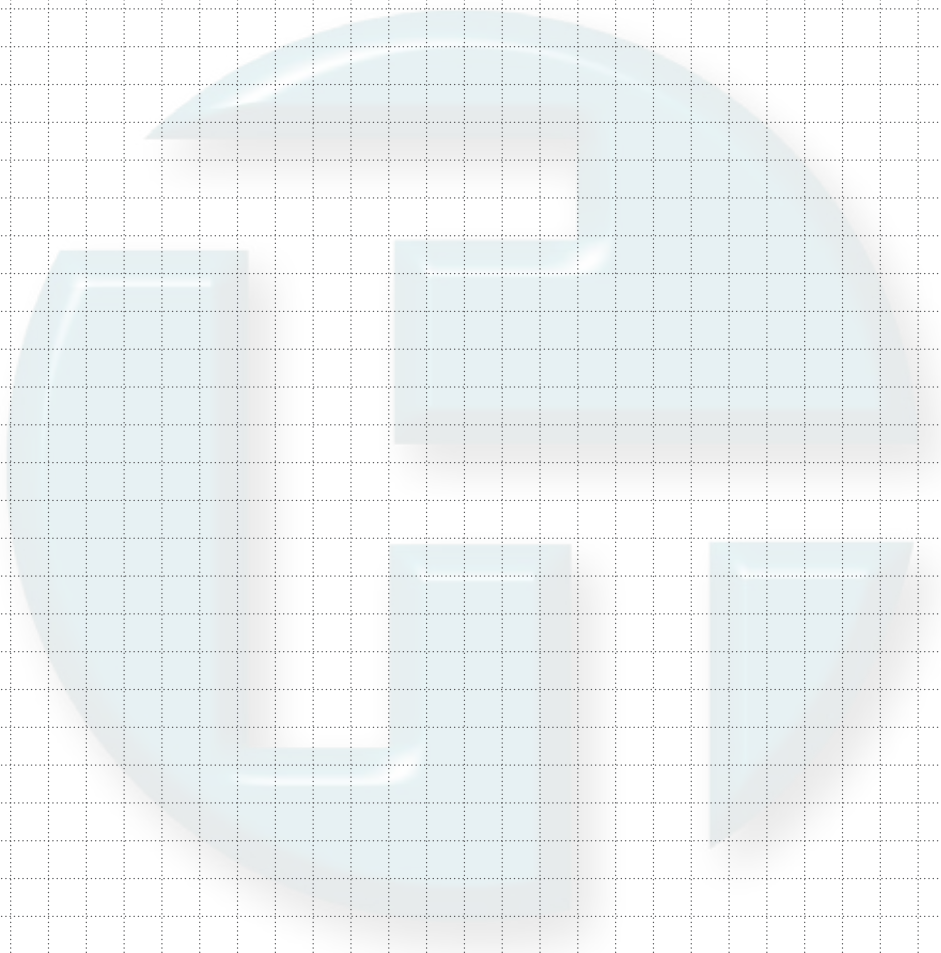
On request, we supply special rod blanks with your specification.



## Axial coolant duct and 4 lateral holes

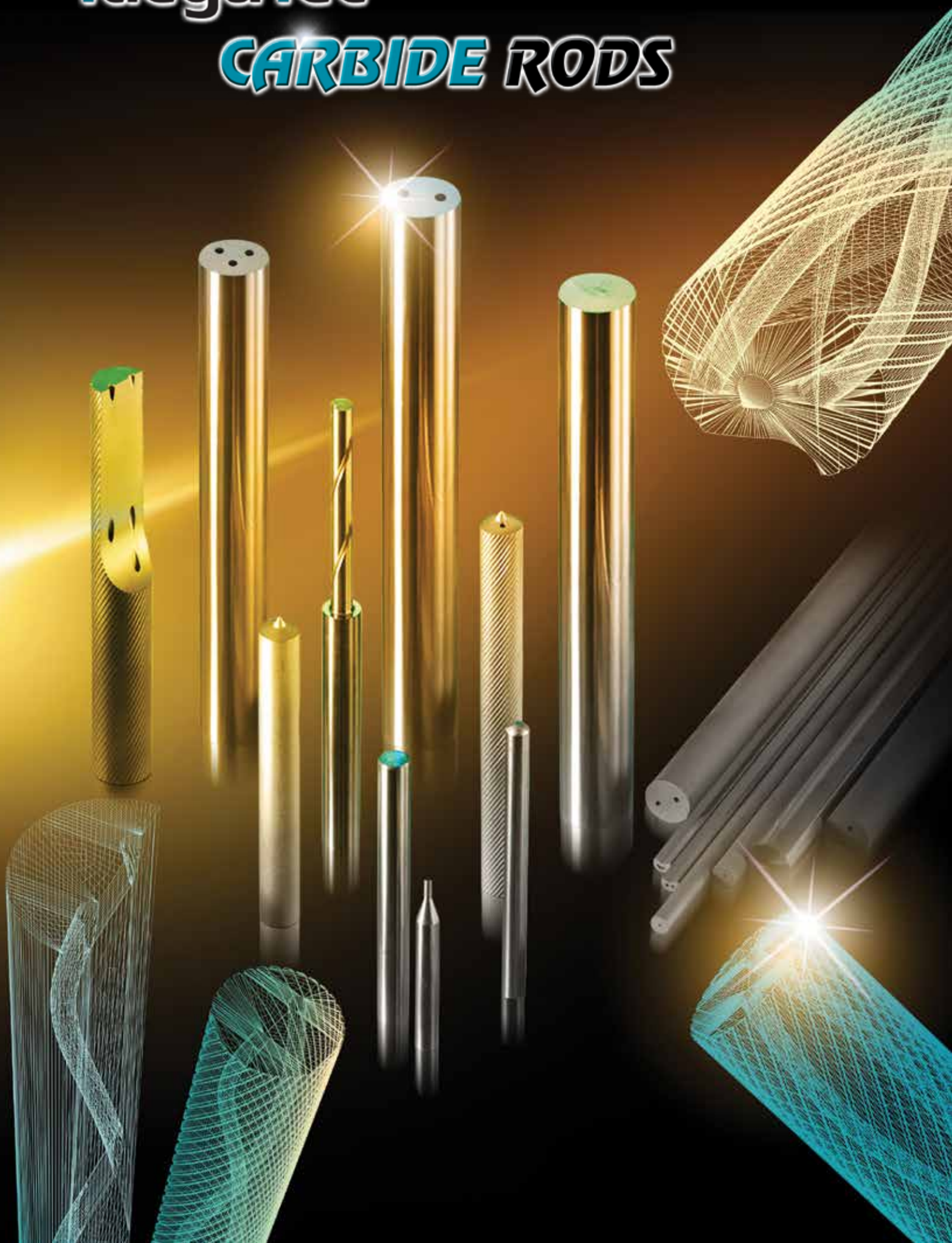
On request, we supply special rod blanks with your specification.





# TaeguTec

## CARBIDE RODS



# CARBIDE RODS

## World Headquarters

### TaeguTec Ltd.

304 Yonggye 4-ri, Gachang-myeon,  
Dalseong-gun, Daegu 711-864, KOREA  
Tel: +82-53-760-7637  
Fax: +82-53-768-9912  
Web: <http://www.taegutec.com>

## IMC International Metalworking Engineering & Production (Dalian) Co Ltd

No. 62 Tie Shan Zhong Road,  
Dalian Development Area, 116600 China  
Tel : +86 (0)411 8796 3000/3013  
Fax : +86 (0)411 8796 3188  
E-mail : [CustomerService@imc-companies.com.cn](mailto:CustomerService@imc-companies.com.cn)



- Cat.No: 2027815
- English Version: IP 01/2014
- ©TaeguTec LTD.