

Precision meets Motion

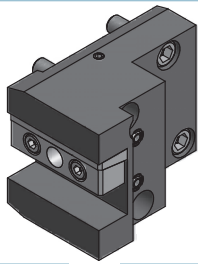


Werkzeugsysteme für Okuma LB2000 / LB3000

Tool systems for Okuma LB2000 / LB3000

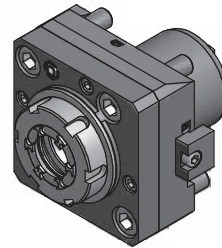
EWS
Tool Technologies

Inhaltsverzeichnis / Contents



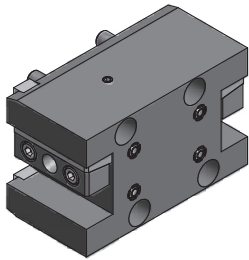
**Außendrehhalter /
OD-holder**

6.50.1



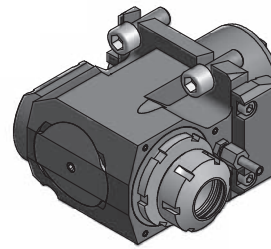
**Axial Bohr- und
Fräskopf /
Axial drilling and
milling head**

6.50.3 - 6.50.4



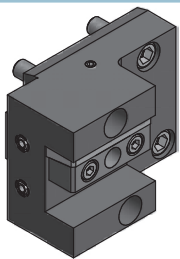
**Doppel Außendreh-
halter/
Double OD-holder**

6.50.1



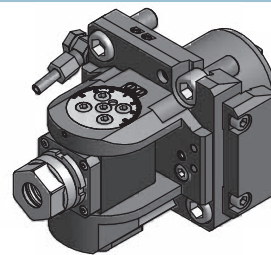
**Radial Bohr- und
Fräskopf /
Radial drilling and
milling head**

6.50.5 - 6.50.9



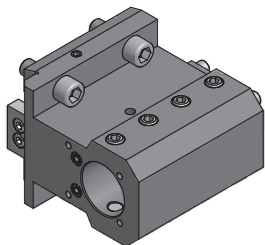
**Plandrehhalter /
Facing holder**

6.50.2



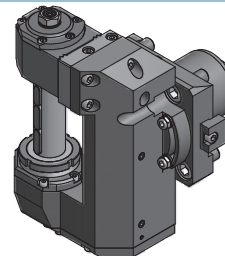
**Schwenkkopf /
Swivel head**

6.50.9



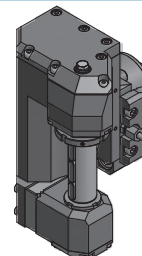
**Kombihalter /
Combi holder**

6.50.2



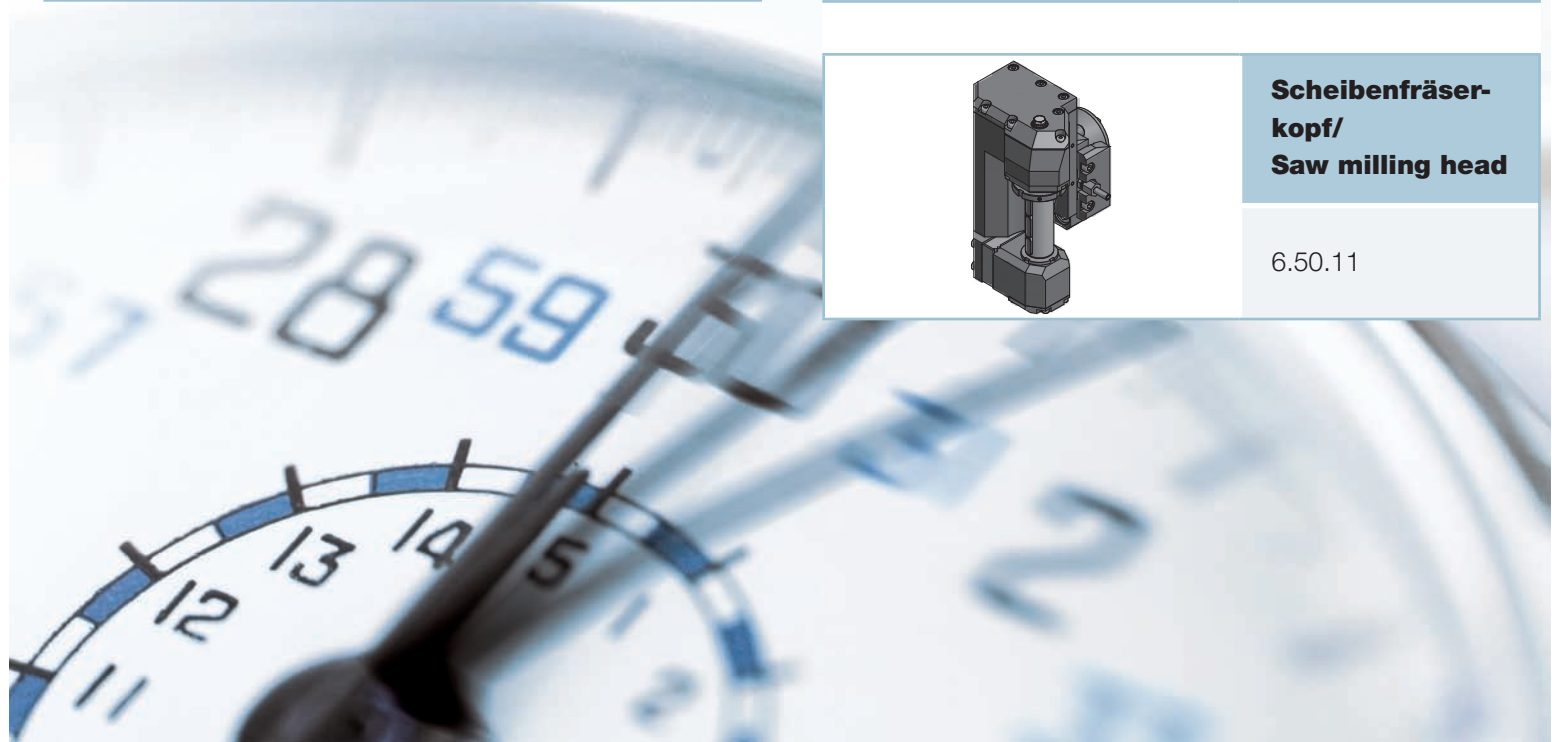
**Verzahnungsfräs-
einrichtung/
Gear hobber**

6.50.10



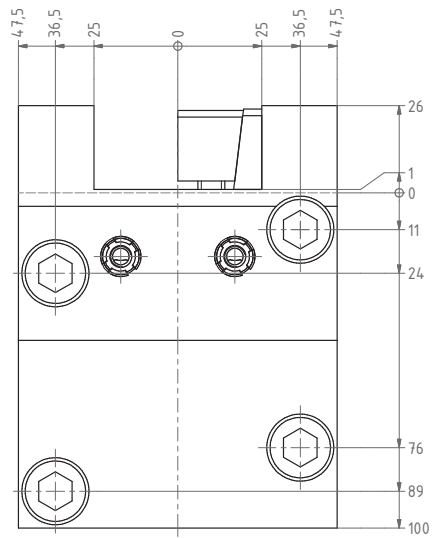
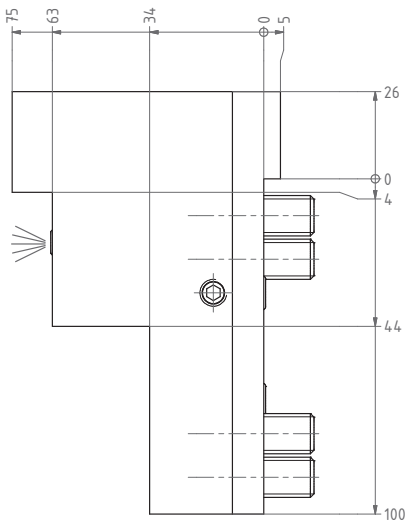
**Scheibenfräser-
kopf/
Saw milling head**

6.50.11

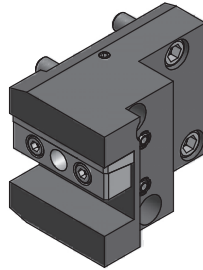


Außendrehhalter

OD-holder

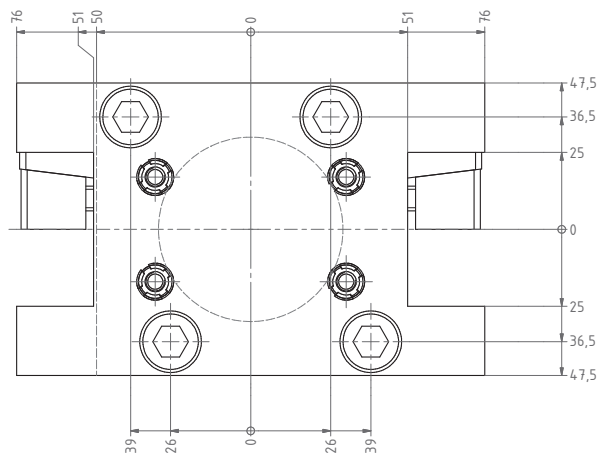
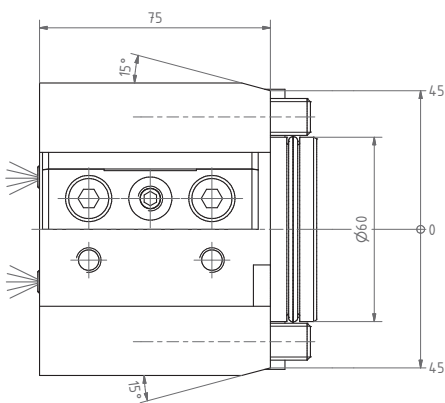


Nr./No.
4.BMT25LB2000

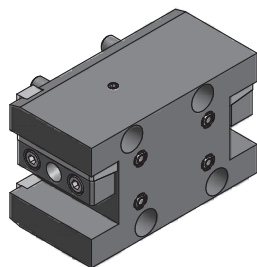


Doppel-Außendrehhalter

Double OD-holder

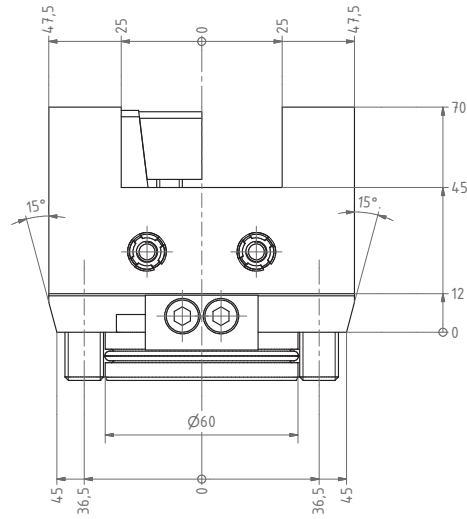
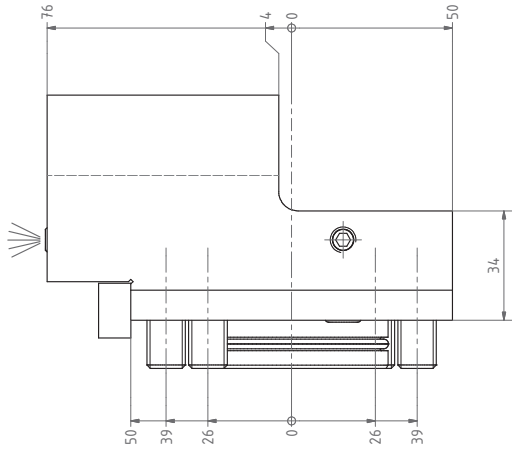


Nr./No.
15.BMT25LB2000

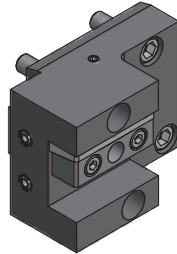


Plandrehhalter

Facing holder

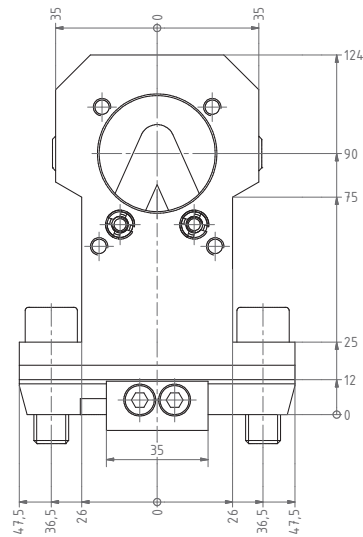
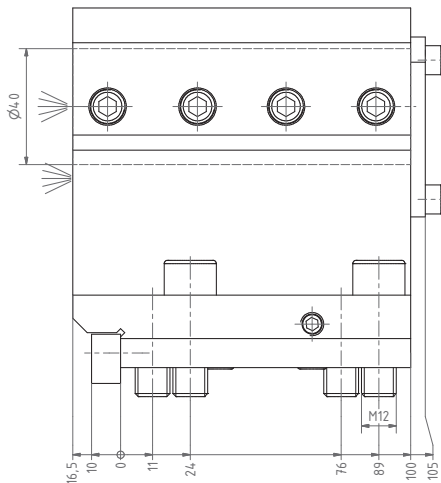


Nr./No.
8.BMT25LB2000

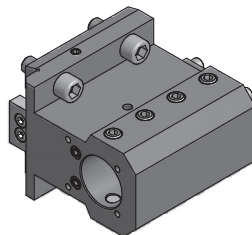


Kombihalter

Combi holder



Nr./No.
17.BMT40LB2000



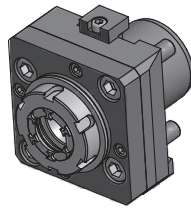
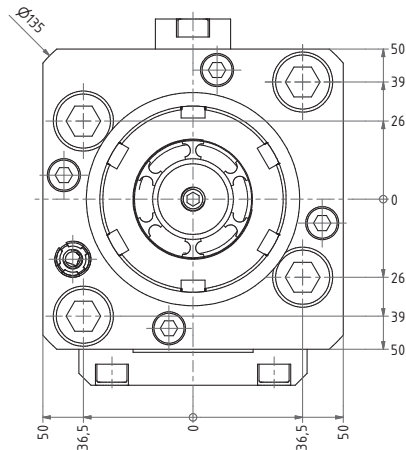
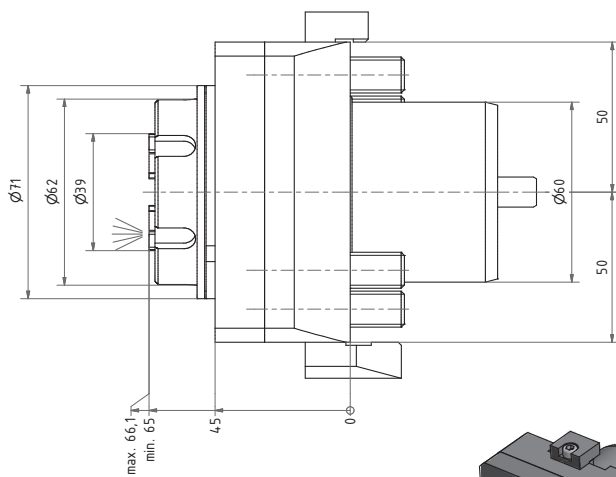
Reduzierhülsen / Reducing sleeves

28.4032S	$\varnothing 32$	28.4012S	$\varnothing 12$
28.4025S	$\varnothing 25$	28.4010S	$\varnothing 10$
28.4020S	$\varnothing 20$	28.4008S	$\varnothing 8$
28.4016S	$\varnothing 16$		

andere \varnothing auf Anfrage / other \varnothing on request

Axial Bohr- und Fräskopf

Axial drilling and milling head

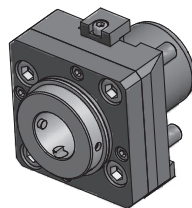
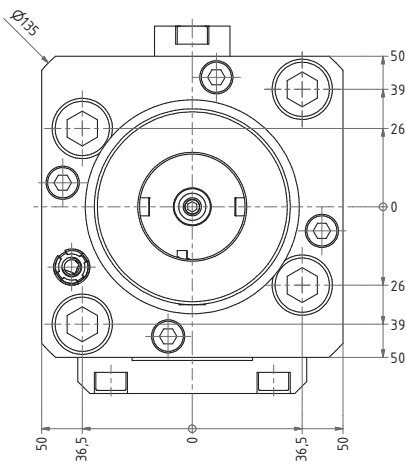
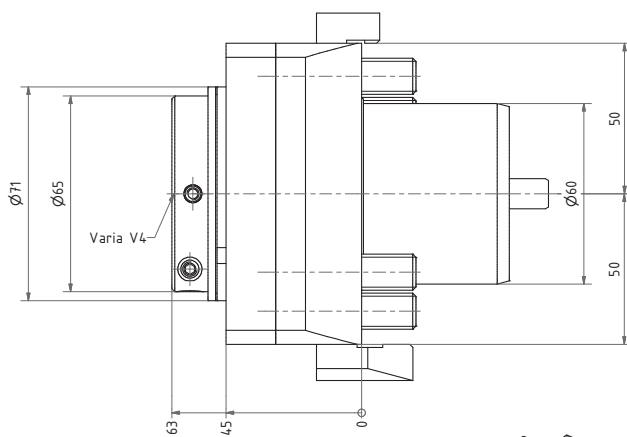


IK = Innenkühlung
 IK = internal cooling

Nr. / No.	Spannzange/ Collet	i	n _{max}	T _{max}
40.6032LB2000BMTIM	ER32 (3-20)	1:1	6000 1/min	50 Nm
40.6032LB2000BMTIKIM	ER32 (3-20)	1:1	6000 1/min	50 Nm

Axial Bohr- und Fräskopf

Axial drilling and milling head



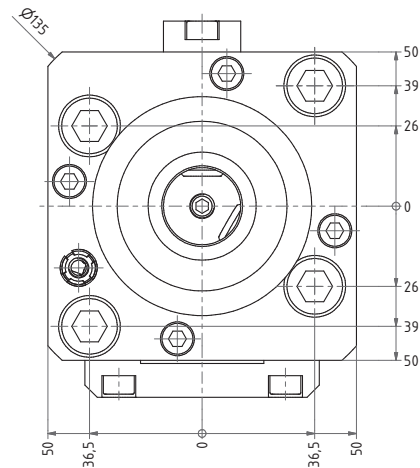
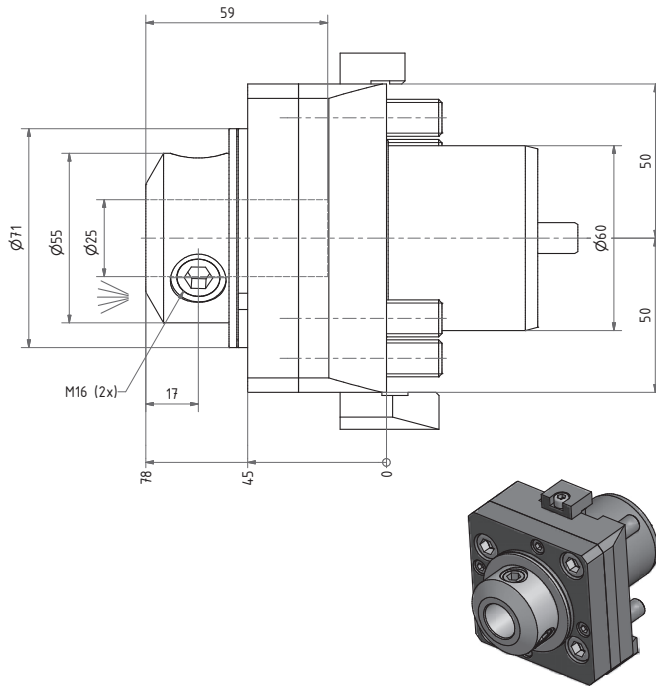
EWS-Varia

Nr. / No.	i	n _{max}	T _{max}
40.60V4LB2000BMT	1:1	6000 1/min	50 Nm
40.60V4LB2000BMTIK	1:1	6000 1/min	50 Nm

IK = Innenkühlung
 IK = internal cooling

Axial Bohr- und Fräskopf

Axial drilling and milling head



Weldon / Whistle Notch

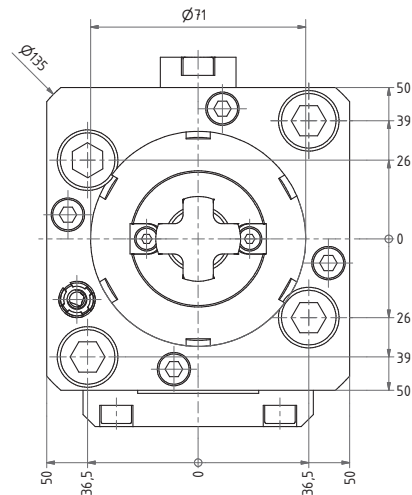
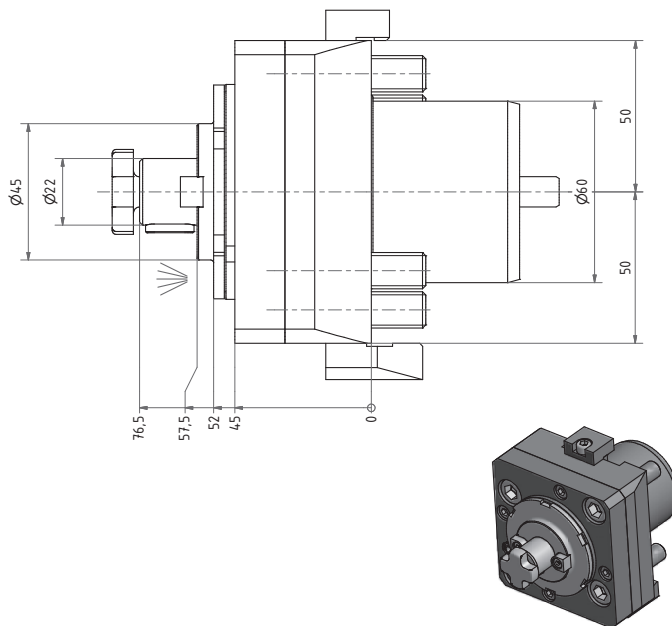
Nr. / No.	i	n _{max}	T _{max}
40.6025WNLB2000BMT	1:1	6000 1/min	50 Nm
40.6025WNLB2000BMTIK	1:1	6000 1/min	50 Nm

IK = Innenkühlung
IK = internal cooling

andere Ø auf Anfrage / other Ø on request

Axial Fräskopf

Axial milling head

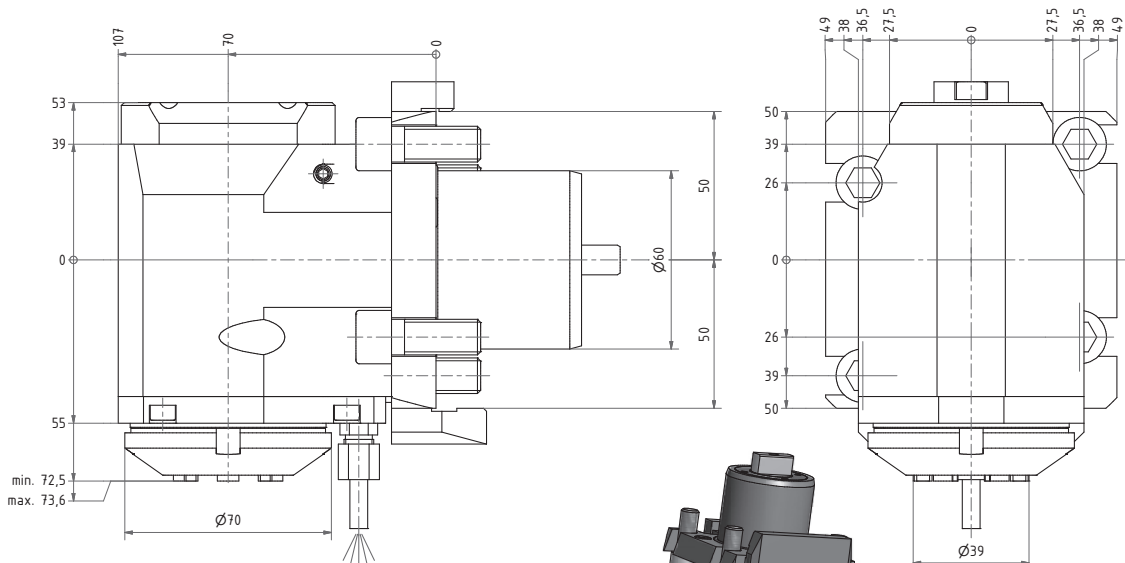


Nr. / No.	Ø	i	n _{max}	T _{max}
42.6022KRLB2000BMT	22	1:1	4000 1/min	50 Nm

andere Ø auf Anfrage / other Ø on request

Radial Bohr- und Fräbkopf

Radial drilling and milling head

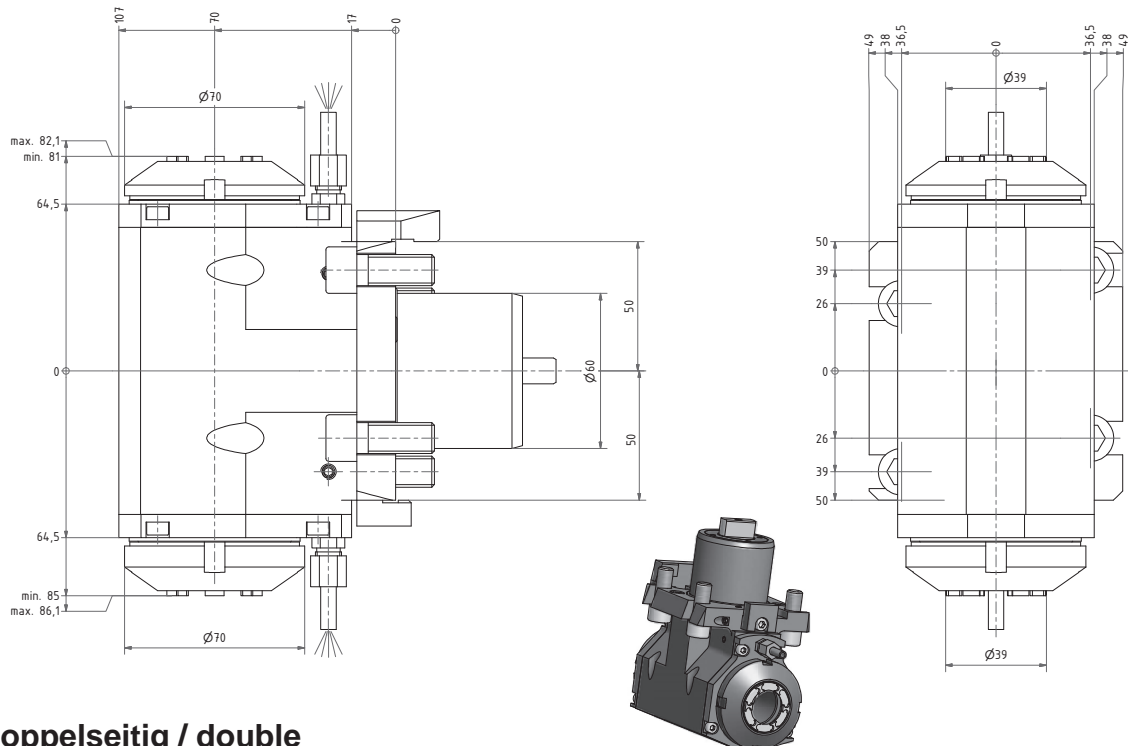


IK = Innenkühlung
 IK = internal cooling

Nr. / No.	Spannzange/ Collet	i	n _{max}	T _{max}
60.6032LB2000BMTIM	ER32 (3-20)	1:1	6000 1/min	50 Nm
60.6032LB2000BMTIKIM	ER32 (3-20)	1:1	6000 1/min	50 Nm

Radial Bohr- und Fräskopf

Radial drilling and milling head

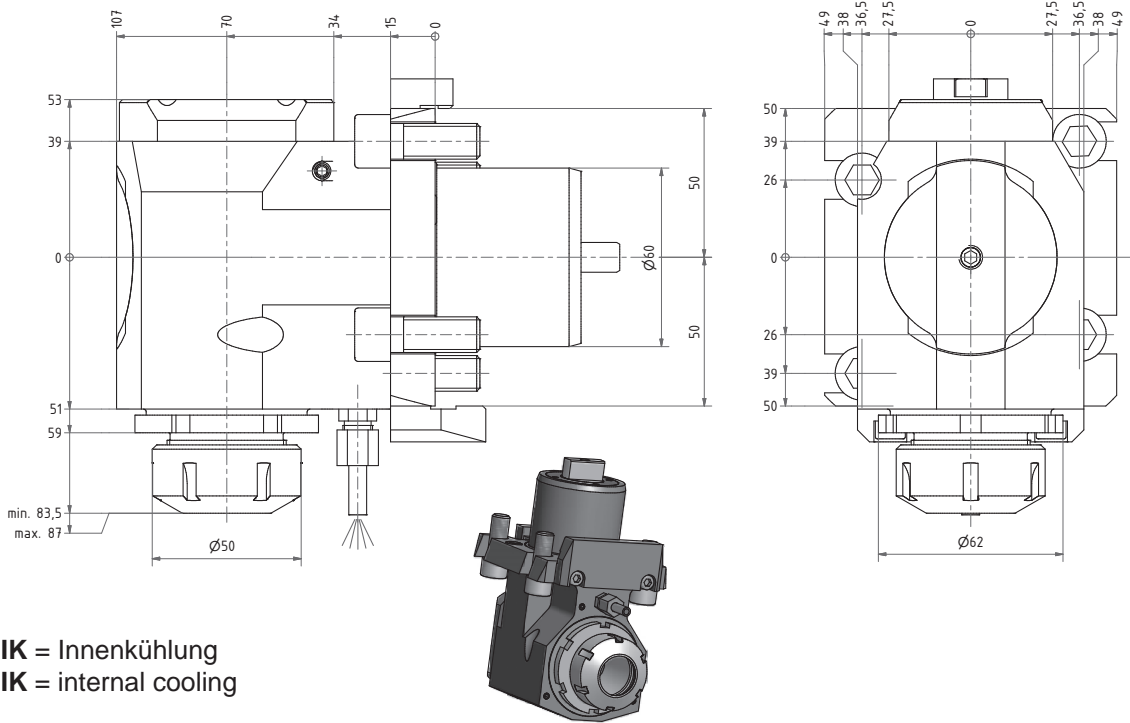


doppelseitig / double

Nr. / No.	Spannzange/ Collet	i	n _{max}	T _{max}
60.6032DLB2000BMTIM	ER32 (3-20)	1:1	6000 1/min	50 Nm

Radial Bohr- und Fräskopf

Radial drilling and milling head

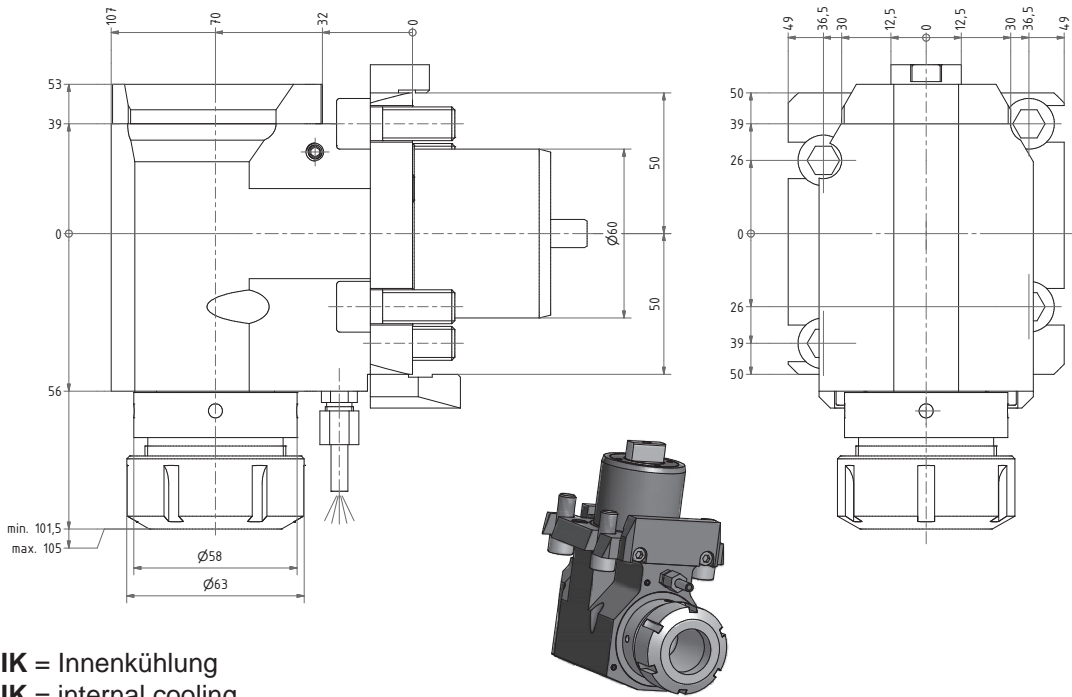


IK = Innenkühlung
IK = internal cooling

Nr. / No.	Spannzange/ Collet	i	n _{max}	T _{max}
60.6032LB2000BMTI1	ER32 (3-20)	1:2	10000 1/min	25 Nm
60.6032LB2000BMTIK11	ER32 (3-20)	1:2	10000 1/min	25 Nm

Radial Bohr- und Fräskopf

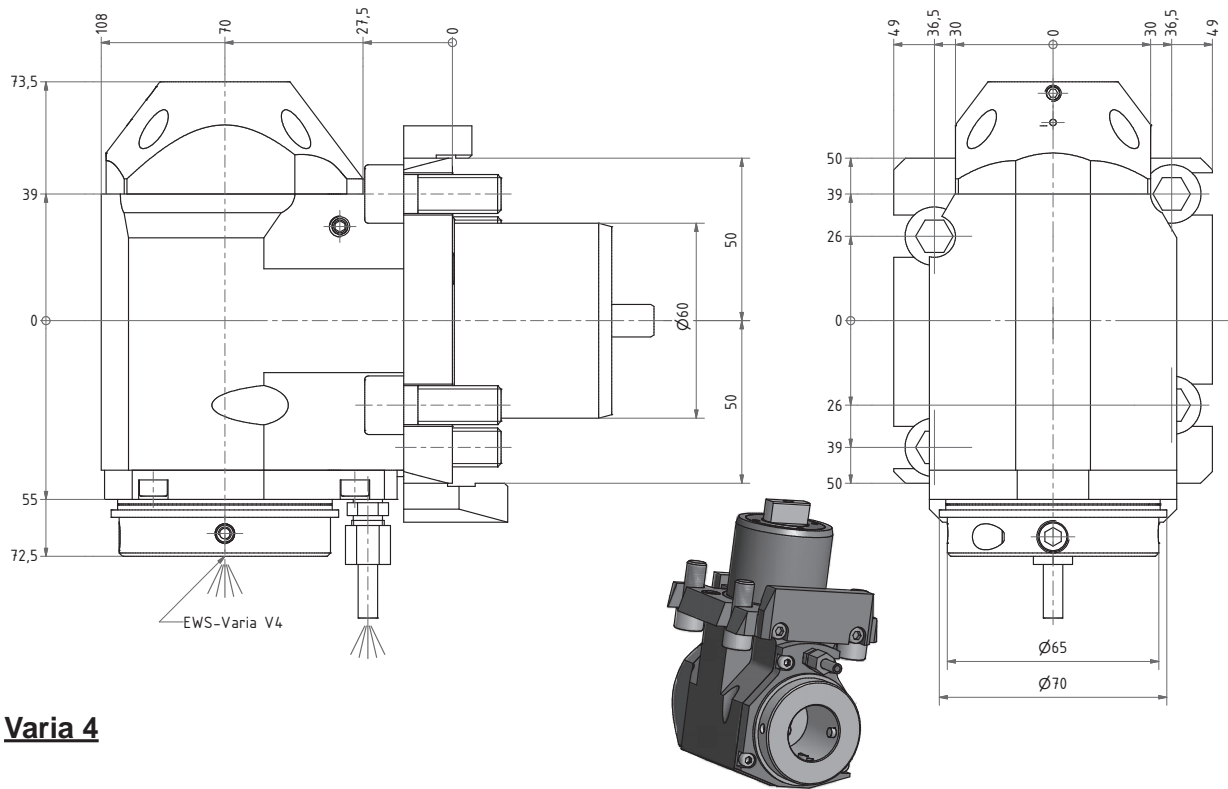
Radial drilling and milling head



IK = Innenkühlung
IK = internal cooling

Nr. / No.	Spannzange/ Collet	i	n _{max}	T _{max}
60.6040LB2000BMTI2	ER40 (4-26)	2:1	3000 1/min	80 Nm
60.6040LB2000BMTIKI2	ER40 (4-26)	2:1	3000 1/min	80 Nm

Radial Bohr- und Fräskopf Radial drilling and milling head



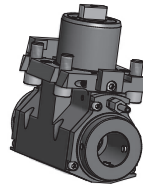
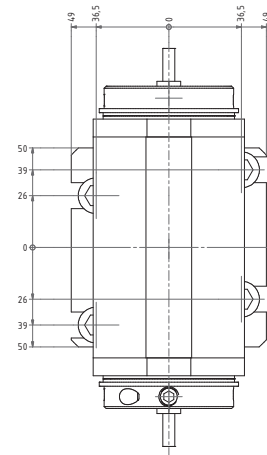
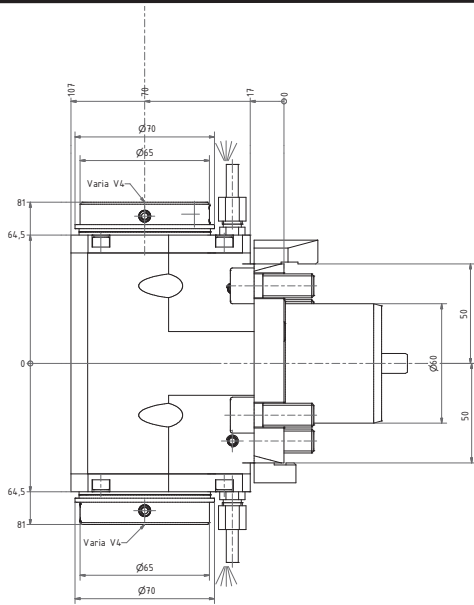
Varia 4

Nr. / No.	i=	n _{max}	T _{max}
60.60V4LB2000BMT	1:1	6000 1/min	50 Nm
60.60V4LB2000BMTIK	1:1	6000 1/min	50 Nm
60.60V4LB2000BMTI1	1:2	10000 1/min	25 Nm
60.60V4LB2000BMTIKI1	1:2	10000 1/min	25 Nm
60.60V4LB2000BMTI2	2:1	3000 1/min	80 Nm
60.60V4LB2000BMTIKI2	2:1	3000 1/min	80 Nm

IK = Innenkühlung
IK = internal cooling

Radial Bohr- und Fräskopf

Radial drilling and milling head

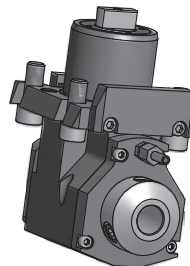
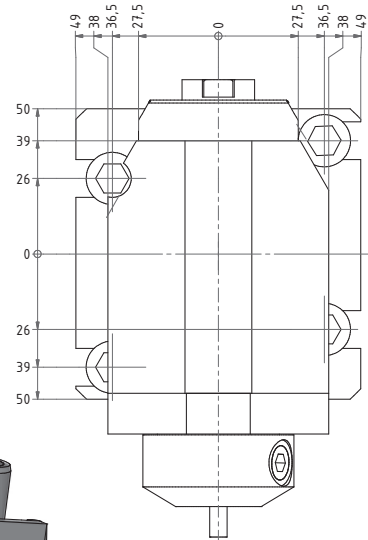
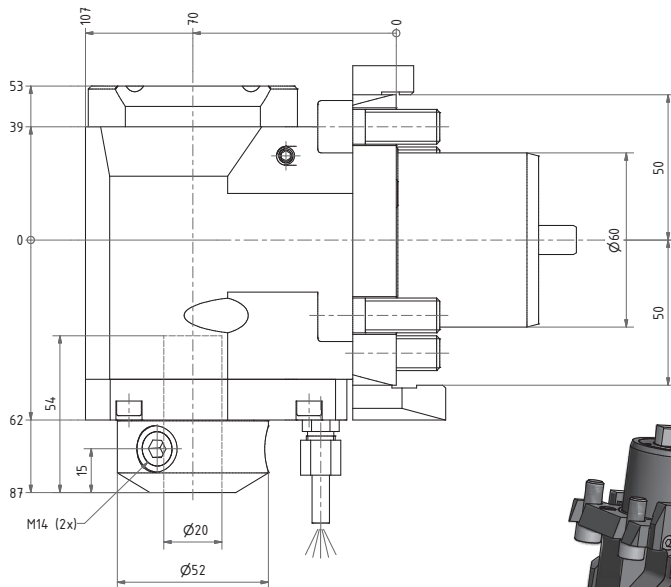


Varia 4
doppelseitig/ double

Nr. / No.	i	n_{max}	T_{max}
60.60V4DLB2000BMT	1:1	6000 1/min	50 Nm

Radial Bohr- und Fräskopf

Radial drilling and milling head



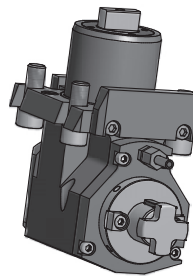
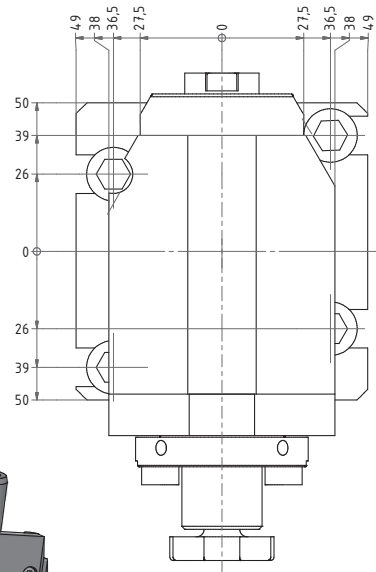
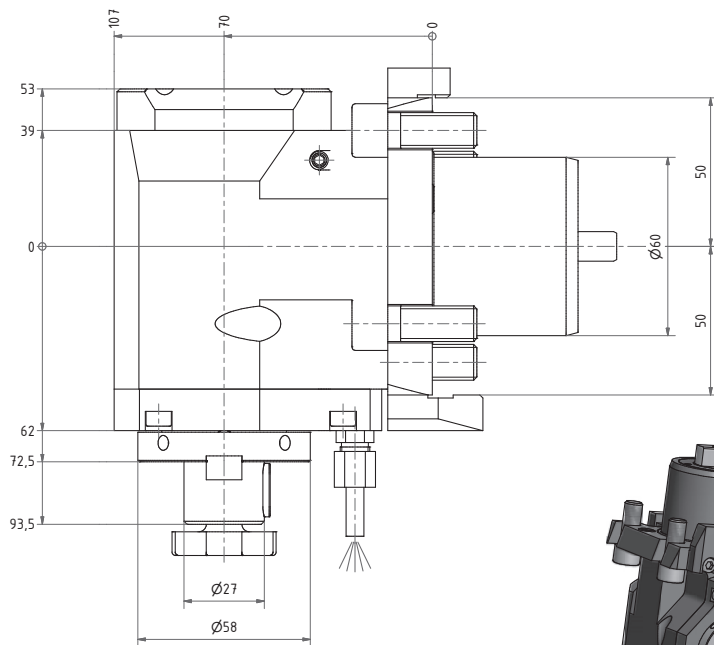
IK = Innenkühlung
IK = internal cooling

Nr. / No.	i	n_{max}	T_{max}
60.6020WNLB2000BMT	1:1	6000 1/min	50 Nm
60.6020WNLB2000BMTIK	1:1	6000 1/min	50 Nm

andere Ø auf Anfrage / other Ø on request
andere Übersetzungen auf Anfrage / other ratios on request

Radial Fräskopf

Radial milling head

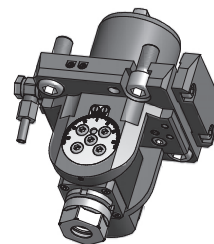
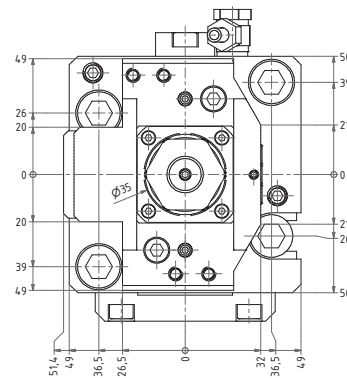
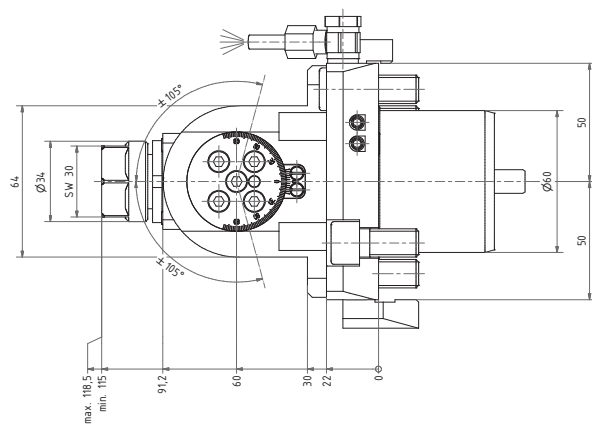


Nr. / No.	i	n _{max}	T _{max}
62.6027LB2000BMT	1:1	6000 1/min	50 Nm

Andere Fräsdorn Ø auf Anfrage /
Other milling arbor Ø on request

Schwenkkopf

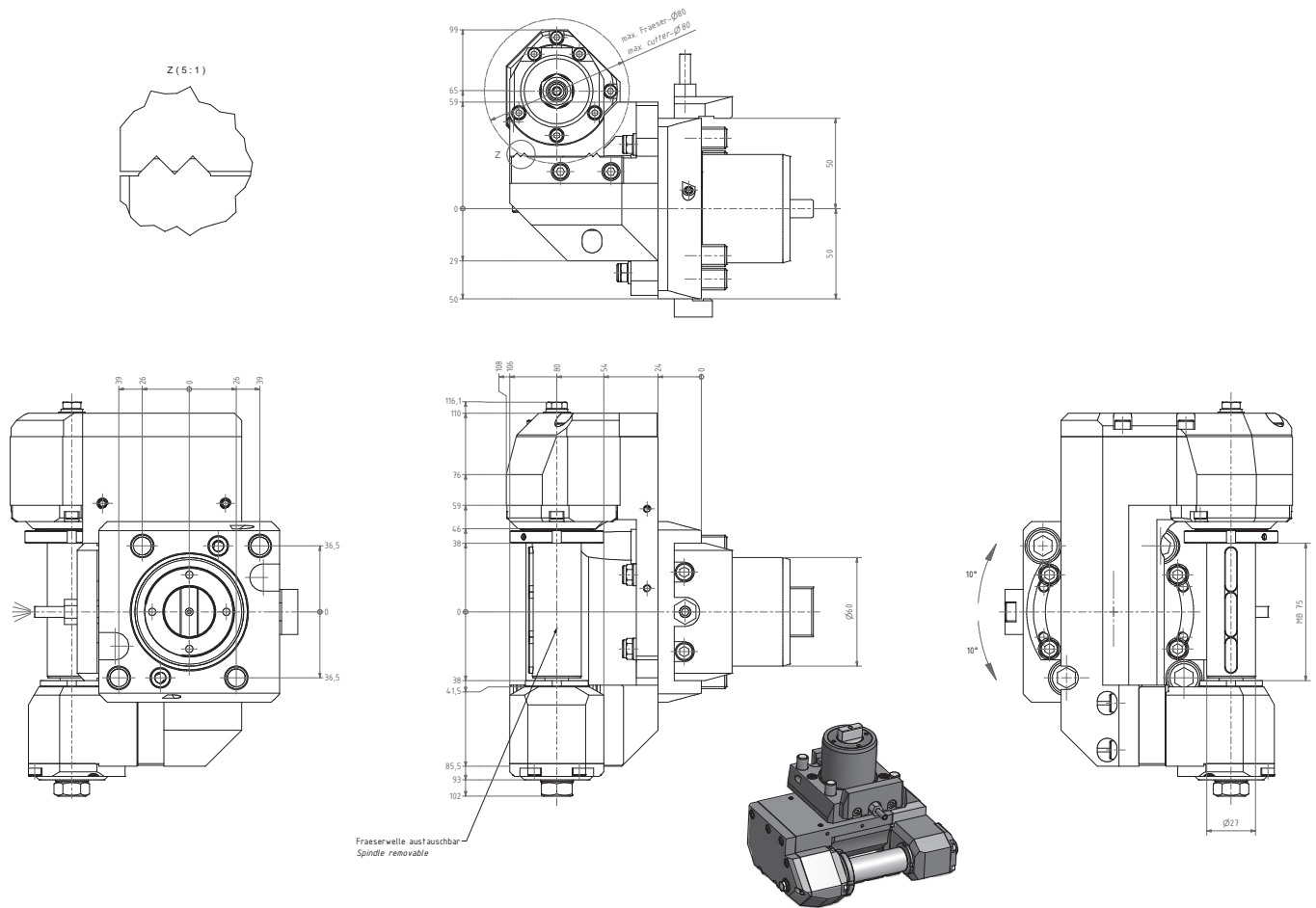
Swivel head



Nr. / No.	i	n _{max}	T _{max}
63.6020LB2000BMT	1:1	6000 1/min	20 Nm

Verzahnungsfräseinrichtung

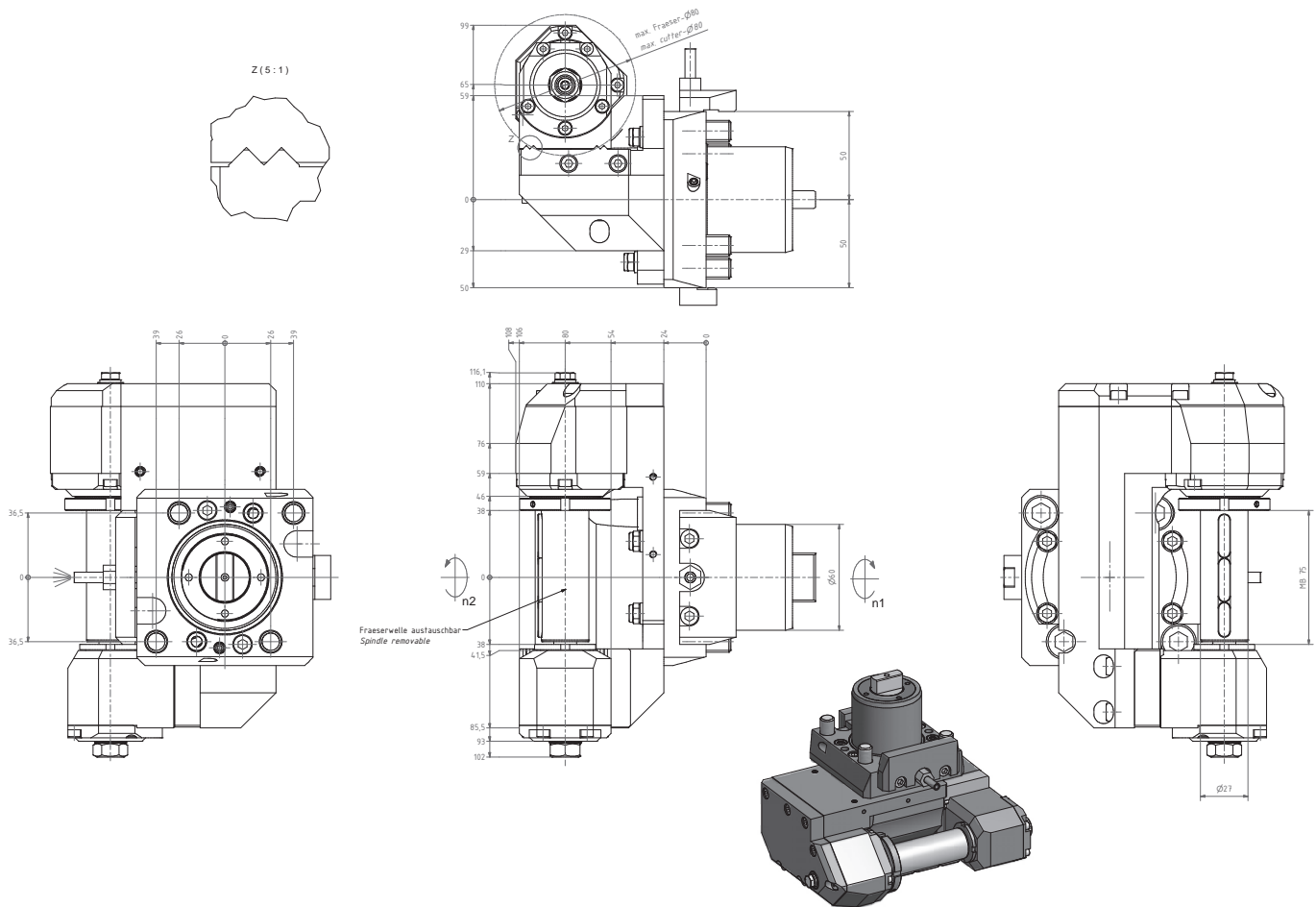
Gear hobber



Nr. / No.	i	n _{max}	T _{max}
64.6027LB2000BMT12TKWZ65MB75	2:1	3000 1/min	40 Nm

Scheibenfräskopf

Saw milling head



Nr. / No.	i	nmax	Tmax
64.6027LB2000BMT12Z65MB75	2:1	3000 1/min	40 Nm

Andere Fräsdorn Ø auf Anfrage / Other milling arbor Ø on request



EWS Weigle GmbH & Co. KG

Maybachstraße 1 · D-73066 Uhingen
Telefon +49(0)7161-93040-100
Telefax +49(0)7161-93040-30
E-Mail: info@ews-tools.de
www.ews-tools.de

WSW Spannwerkzeuge-Vertriebs GmbH

Maybachstr. 1 · D-73066 Uhingen
Telefon +49(0)7161-93040-100
Telefax +49(0)7161-93040-30
E-Mail: info@wsw-collets.de
www.wsw-collets.de

Command Tooling Systems

13931 Sunfish Lake Blvd NW
Ramsey · MN 55303 USA
Telefon +1-763-576-6910
Telefax +1-763-576-6911
support@commandtool.com
www.commandtool.com

EWS Korea Co. Ltd.

60-11 · Woongnam-Dong
Changwon
Kyoung-Nam Korea
Telefon +82 55-267-8085
Telefax +82 55-262-3118
E-Mail: info@ewskorea.co.kr
www.ewskorea.co.kr

EWS Ltd.

B. Nizhegorodskaya str., 81
office 806
600000 Vladimir Russland
Telefon: +7-4922-490420
Fax: +7-4922-451828
info@ews-russland.ru
www.ews-russland.ru

Stand / updated: 01/2012

